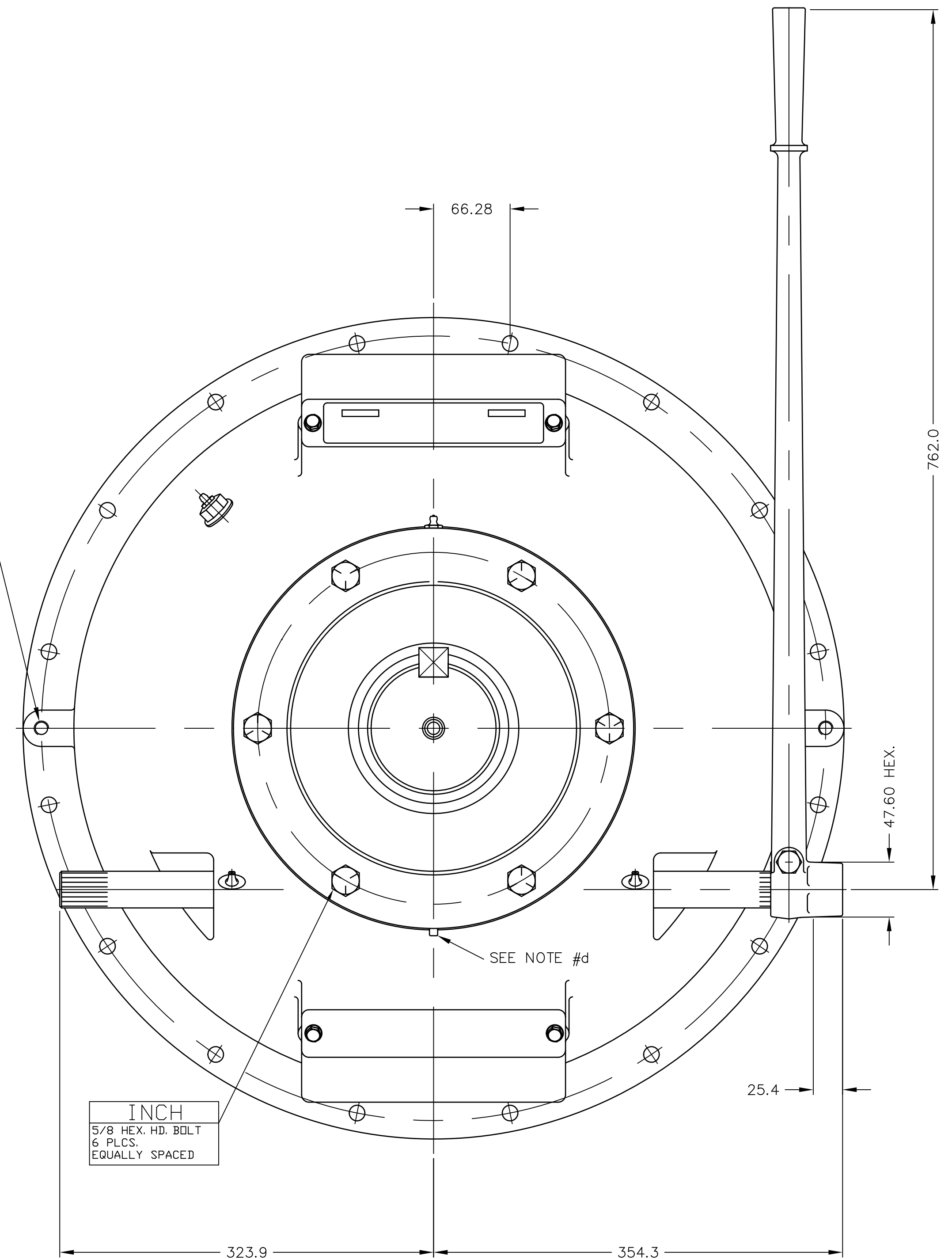
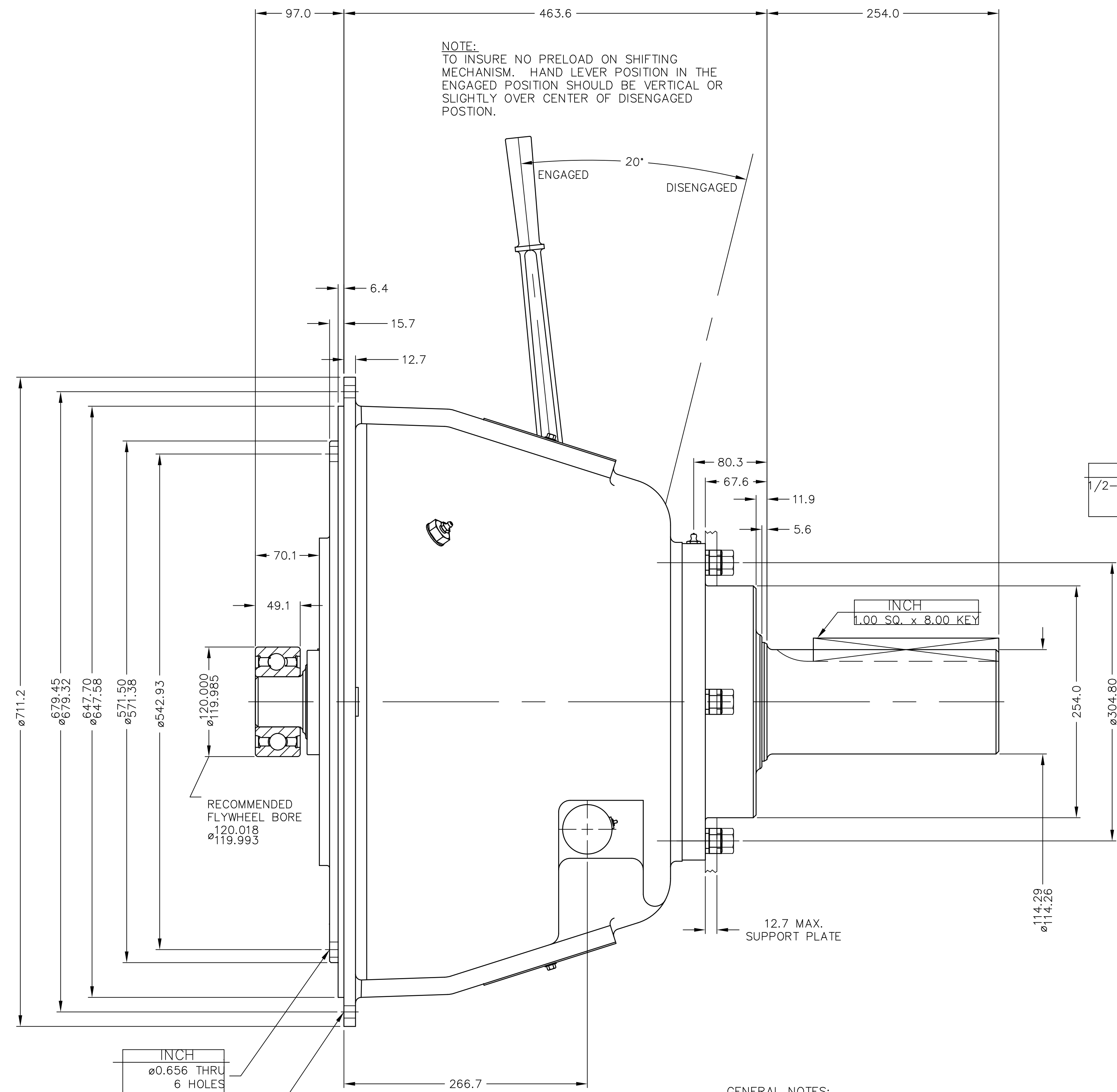


NOTE:  
TO INSURE NO PRELOAD ON SHIFTING MECHANISM. HAND LEVER POSITION IN THE ENGAGED POSITION SHOULD BE VERTICAL OR SLIGHTLY OVER CENTER OF DISENGAGED POSITION.



GENERAL NOTES:

- a.) REFER TO BILL OF MATERIALS LIST WHEN ORDERING PARTS.
- b.) REFER TO CARE & OP. MANUAL FOR ADDITIONAL INFO..
- c.) INSTALLER SUPPLIED SUPPORT PLATE MUST BE USED.
- d.) REMOVE PIPE PLUG UNDERNEATH WHEN GREASING MAIN BEARING. BEST REMOVAL OF OLD GREASE WILL BE OBTAINED WITH SHAFT TURNING. AFTER CLEAN GREASE APPEARS AT OUTLET, RUN UNIT ONE HALF HOUR UNTILL EXCESS GREASE DRAINS OUT. RE-INSTALL PLUG (BEARINGS RUN HOT IF TOO MUCH GREASE IS USED).

REMOVE SP318P002, SP318P003, SP318P004, SP318P005 AND SP318P006 TO SEPARATE DRAWINGS

UNLESS OTHERWISE SPECIFIED DIMENSIONS ARE mm MACHINED DIMENSIONS ±0.25 X ±0.75 X.X ±0.13 X.XX ±0.13 GEOMETRIC TOLERANCING PER ASME Y14.5M 1994	WEIGHT	WR <sup>2</sup>	FIRST USE ASSY. MODEL	MATERIAL SIMILAR TO	HEAT TREAT	DATE	TWIN DISC INCORPORATED RACINE, WI 53403 - USA
	kg	N.m <sup>2</sup>	SP318P001 SP318P0			08-14-08	
NOTICE: THIS PRINT CONTAINS PROPRIETARY INFORMATION AND IS NOT TO BE USED IN ANY MANNER DETRIMENTAL TO THE INTEREST OF TWIN DISC, INCORPORATE THIS NOTICE IS NOT INTENDED TO NULLIFY OR LIMIT RIGHTS GRANTED TO THE U.S. GOVERNMENT OR OTHERS BY CONTRACT.				THIRD ANGLE PROJECTION		SCALE	SP318P001
						.38 = 1	
				NAME		DRN:	REV
				SP318P0 POWER TAKEOFF		DJH	
				DWG SIZE		ZP	SHT. 2 OF 2
				A1		SAG	