



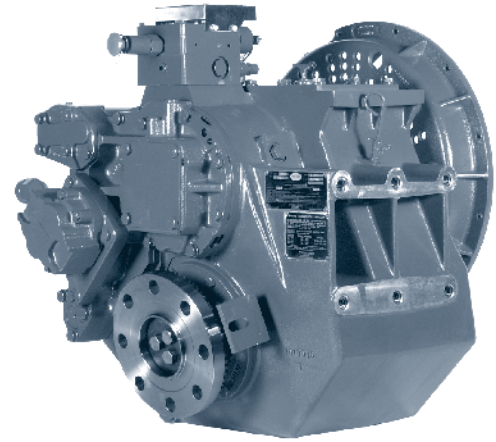
MARINE PRODUCT GUIDE



November 2014

TABLE OF CONTENTS

Twin Disc Marine Product Information	3 - 24
Service Classification Definitions	25
Important Application Information	26
Pleasure Craft	27 - 36
Standard and QuickShift® Marine Transmission Ratings	
Light Duty	37 - 44
Standard and QuickShift® Marine Transmission Ratings	
Intermediate Duty	45 - 54
Standard and QuickShift® Marine Transmission Ratings	
Medium Duty	55 - 64
Standard and QuickShift® Marine Transmission Ratings	
Continuous Duty	65 - 74
Standard and QuickShift® Marine Transmission Ratings	
Standard and QuickShift® Marine Transmission Dimensions.	75 - 82
Twin Disc Locations	85 - 86



QUICKSHIFT®
You've got to feel it to believe it.

ENGINEERED TO WORK. HARD.

Twin Disc marine products are designed, engineered and built to perform real tasks, really well, in the real world. Sometimes it's glamorous work; sometimes it's not so pretty. But it's always necessary.

From luxurious pleasure craft to stealthy military vessels to hard-working tugs, pushboats, fishing boats, crew boats and supply vessels, Twin Disc products optimize the control of the engine's horsepower, contributing to the boat's overall performance, productivity, operating efficiency and cost-effectiveness.

Twin Disc marine products propel all kinds of vessels, on all kinds of water, all around the world.

FAST, SMOOTH SHIFTS

No other marine transmission in the world shifts as fast and smooth as the Twin Disc QuickShift®, yet it provides amazing control at near zero vessel speed.

FEATURES & BENEFITS

- Patented, completely internal and integrated clutch actuating system
- Regulates engine torque at extremely low speeds to slow the propeller speed down to 50 rpm or less — allowing you to maneuver at near zero boat speed, an incredible advantage in docking
- Instantly delivers cushioned torque to the driveline when shifting from neutral to anywhere from full ahead to full reverse
- Eliminates driveline shock while optimizing power to the driveshaft
- Steep but smooth power curve (full out or at slow speeds)
- Superior maneuvering control
- Instant power to propeller

SPEED IS JUST THE BEGINNING

Mechanical innovator and offshore racing enthusiast Howard Arneson perfected the performance and reliability of surface-piercing propulsion. Twin Disc then made Arneson Surface Drives[®] available for non-racing applications – pleasure craft and commercial vessels, as well as military applications. Today, Arneson Surface Drives[®] are renown as the fastest, most efficient, fuel-friendly propulsion systems on the planet.



FEATURES & BENEFITS

- Cleaner hull, trimable drive shaft and adjustable angle
- Completely eliminates cavitation, thus increasing propeller performance while reducing cavitation erosion
- Manufactured for maximum duty applications and to last the life of the vessel using high-quality, corrosion-resistant materials matched to exacting tolerances
- Models designed to fit virtually every powerplant option, accommodating torque outputs exceeding 16,500 lb-ft
- Can be combined with Twin Disc QuickShift[®] transmissions and EC300 control systems
- Accelerate faster and achieve higher top end than conventional drives
- Reduce underwater drag by 50% compared to conventional submerged propeller drive systems and provide more efficient thrust
- Can reduce engine costs while maintaining performance
- Better payload-to-power ratio
- Outperforms waterjets in high-speed applications

MODEL		ASD06	ASD08	ASD10		ASD11S	ASD12	ASD14	ASD15S	ASD15L	ASD16
HORSEPOWER ACCEPTANCE	GASOLINE @ 5200 rpm	To 550	To 990	To 1485		—					
	DIESEL @ 2400 rpm	To 290	To 380	To 565		To 850	To 1400	To 1800	To 2100	To 2400	Contact Twin Disc, Inc.
	GAS TURBINE	Contact Twin Disc, Inc.									
ASD INPUT SHAFT TORQUE LIMITS ¹ (lbs-ft)		650	1200	2000		3200	4800	8000	11500	13500	16500
NOMINAL SHAFT SIZE (inches)		1.75	2.00	2.50		2.875	3.30	3.50	4.50	4.50	4.50
UNIT WEIGHT (pounds, dry, includes ASD unit, trim and steering cylinders, trim pump, reservoir, mounting hardware and hoses) ²		A 135 B 195	B 285	B 415		B 515	B 785	B 1135	A 1500	A 1540	A 1985
OVERALL EXTERNAL LENGTH (inches)		36	42	53		57	63	71	78	78	87
THRUST SOCKET DIAMETER (inches)		8	8	10		10	13	15	19	19	20
THRUST SOCKET FLANGE DIAMETER (inches)		8	12	14		14	17	19	21.25	21.25	23
TURNING ANGLE (total)		40°	40°	40°		40°	40°	40°	36°	36°	36°
PROPELLER TRIM CONTROL (vertical travel)		15°	15°	15°		15°	15°	15°	15°	15°	15°

1. Torque ratings shown are nominal and may vary due to vessel characteristics.

2 A: Aluminum housings
B: Bronze housings



ROLLA™

A Twin Disc Company

TWIN DISC MARINE CONTROL DRIVE (MCD)

TESTED & PROVEN

With over 30 years of research, development and operation, the versatile Twin Disc Marine Control Drive (MCD) has proven its worth in a wide variety of workboat applications including tugs, offshore supply vessels, double-ended ferries, icebreakers, dredges and fire fighting vessels.

FEATURES & BENEFITS

- Provides operating advantages for vessels requiring highly-accurate positioning
- Used in conjunction with Azimuth Thruster systems
- Best alternative to controllable pitch propellers (CPP)
- Dynamic positioning (DP) capable
- PTO to drive auxiliary equipment is standard
- Emergency “come home” device per classification requirements
- Smooth, gradual propeller speed change resulting in improved maneuverability
- Safer and easier vessel control during slow speed maneuvering and docking
- Adjustment of propeller speeds below engine speed rating
- Divides the power from the main propulsion engine to eliminate the need for auxiliary engines
- Delivers an instant response when required
- Bearing calculated for high universal joint angles at maximum power



ULTIMATE PROPELLER PERFORMANCE

Since 1963 the name Rolla has been synonymous with the highest quality, most efficient propellers in the world. What started with Philip Rolla individually designing and crafting race-winning propellers has grown to become the leader in propeller technology for high-performance pleasure and commercial craft and military vessels.

FEATURES & BENEFITS

- Rolla stainless steel and NiBrAl propellers range from 16 inches to 10 feet in diameter
- Specifically designed for high-performance submerged and Arneson Surface Drive® applications
- Wide variety of service for every aspect of propeller design, manufacture and application
- Offers complete hydrodynamic analysis and engineering capabilities to computational fluid dynamic (CFD) hull analysis to sea trials

TWIN DISC BOW & STERN THRUSTERS

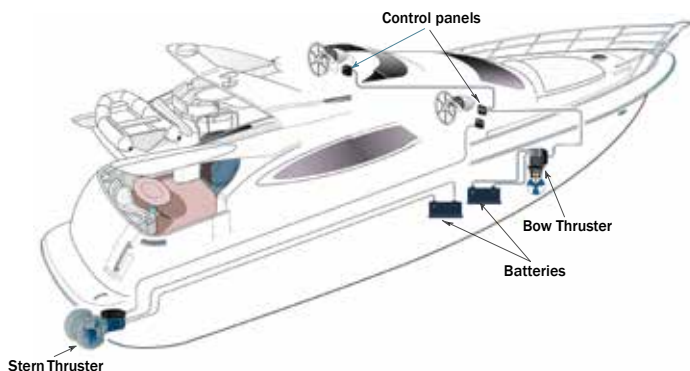
RELIABLE AND HIGH-PERFORMING

Our years of experience in propulsion technologies have brought Twin Disc to the development of our bow thrusters line. Our thrusters are suitable for applications from 20' to 130'. Compact design and easy installation make Twin Disc bow thrusters a favorite among major boatyards.

TWIN DISC ELECTRIC THRUSTERS

FEATURES & BENEFITS

- Compact and effective design for easy installation, even in restricted areas
- Bow- and stern- mounting options
- Reversible electric motor at continuous current
- Transmission gears built in high-tensile materials
- Complete range for applications from 20' to 60'
- Wide range of accessories for a complete system
- Low hydro-dynamic resistance
- Reduced noise
- Materials suitable to the marine environment
- Conforming to the highest production standards
- The thrusters' electric motor can be placed vertically or horizontally, with no impact on system performance
- PCS control system will automatically shut down the thruster in the event of system failure to protect from boat damage



TWIN DISC HYDRAULIC THRUSTERS

FEATURES & BENEFITS

- Combines the need for higher thrust requirements and longer working cycles with the builders' need to control the total weight and dimensions, and the final system cost
- Bow- and stern- mounting options
- Designed and sized specifically for each individual application
- Complete range for applications up to 130'
- Double counter-rotating propeller
- Transmission gears built in high-tensile materials
- High-quality materials suitable to the marine environment
- Wide range of hydraulic components in different sizes for a complete system and different configurations
- Compact leg design for a low hydrodynamic resistance
- Reduced noise
- 'Brand name' hydraulic components for easy access to spare parts
- Easy installation
- Conforming to the highest production standards



Hydraulic Thruster Technical Data

MODEL	Nominal Thrust Kgf • N (lbs)	Tunnel I.D. mm (in)	Nominal Power kW (hp)	Weight kg (lbs)
BP 220	220 • 2158 (485)	250 (9.83)	18.7 (25)	24 (53)
BP 300	300 • 2943 (661)	300 (11.80)	28.5 (38)	35 (77)
BP 400	400 • 3924 (881)	355 (14)	35 (47)	45 (99)
BP 550	550 • 5886 (1322)	400 (15.75)	48.5 (65)	75 (165)
BP 600	600 • 5886 (1333)	450 (17.72)	60 (82)	85 (189)

These values are intended to be indicative. The performance of each thruster depends on several different factors and on the sizing of the hydraulic components. Contact the Twin Disc Applications Engineering Department for suggestions on the most suitable configuration at applications@twindisc.com.

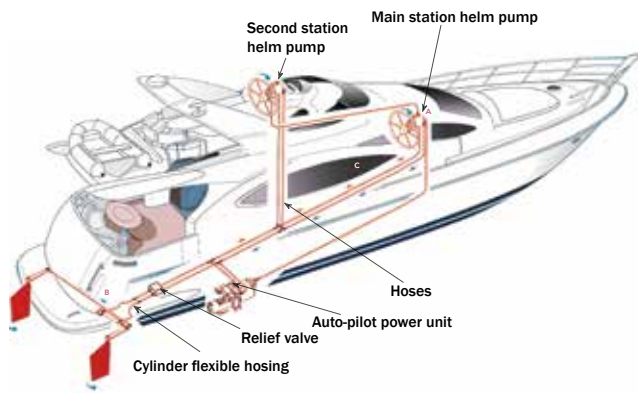
TWIN DISC STEERING SYSTEMS

HYDRAULIC AND ELECTRONIC OPTIONS

Our steering systems are a combination of selected materials, innovative design and state-of-art technical solutions. All components are built with high precision systems and tooling to meet the requirements of the best survey authorities such as Rina Lloyd's Register, ABS and Bureau Veritas.

FEATURES & BENEFITS

- Wide variety of possible configurations
- Suitable for either small/medium pleasure boats and commercial vessels
- Highly-flexible and efficient electronic systems are suitable for applications up to 230'
- Electronic systems support over 100 application types
- Decades of experience in the production of electronic power-assisted steering
- Ensure performance and durability
- Hydraulic cylinders and helm pumps can handle many different applications, from outboard steering to inboard systems



TWIN DISC TRIM TABS

PERFORMANCE, SAFETY AND EFFICIENCY

Twin Disc offers trim tab systems in stainless steel and aluminum. Both are available in a large variety of dimensions and can be combined with four different hydraulic kits, satisfying many different requirements and covering a wide application field. A large selection of accessories are available to complete both stainless and aluminum systems and aid in easy and efficient use.

FEATURES & BENEFITS

- Stainless steel offers highest corrosion resistance
- All series MY3000, MY4000 and MY5000 are available in the simple tab (single plate) type for smaller boats or with lower loads, and the reinforced tab (reinforced plate) for larger applications
- MY3000 series tabs are provided with a welded connection cylinder

Performance improvement

- Stern lifting and better balance
- Faster planing
- Better propeller efficiency for more in-line power
- Listing correction
- Decrease of yawing and wandering with cruising quality improvement

Safety improvement

- Better and greater visibility
- Better maneuverability at low cruising speed

Efficiency improvement

- Better engine performance
- Reduced fuel consumption
- Staying on plane even at slower cruising speed

SEAPROP 60 SAILDRIVE

SAILING EASE AND VERSATILITY

The SeaProp 60 saildrive is a propulsion system for sailboats with engines rated up to 56 kW (75 hp) @ 3600 rpm. Sailboat manufacturers and operators alike benefit from this system's unique but proven design.



FEATURES & BENEFITS

- Easy, space-saving installation
- Eliminates propeller shaft along with stuffing box, cutless bearing, stern tube and strut
- Can be matched with a variety of fixed or foldable propellers
- Sailboat manufacturer will overcome inherent limitations and problems of conventional inboard shaft drive installations with a quicker, more versatile and simplified engine installation process
- Easily mounted facing forward or aft
- Not constrained by shaft angle and offers the builder more versatility in engine placement and a smaller 'footprint' (no shaft, stuffing box, or strut aft of the engine)
- Increased propulsion efficiency as the thrust is parallel to the boat's waterline
- More efficient, quieter, creating less vibration to the boat and providing an all-around smoother experience
- No water leakage into the bilge through the stuffing box

SAILDRIVE SP60 TECHNICAL DATA

RATIO		INPUT RATINGS - PLEASURE KW (HP)		
Forward	Reverse	2800 rpm	3000 rpm	3600 rpm
2.15	2.15	43 (59)	46 (63)	55 (75)
2.38	2.38	34 (46)	36 (50)	44 (60)

Max Input Speed: 3800 rpm

Dry Weight: 43 kg

Oil Quantity: 2.8 liters



ULTIMATE CONTROL IN YOUR HANDS

Leading the industry in quality, style and performance, the Twin Disc Power Commander™ electronic control system is designed to interface with all popular electronic engines and transmissions. It is versatile, rugged and easy to install. With literally one finger on one lever, the operator can control the boat's speed and direction. Multiple drivetrains and multiple control heads can easily be accommodated. Multiple electronic control stations can be placed around the boat.



FEATURES & BENEFITS

- Single lever control
- Selectable synchronization
- Trolling valve control option
- J1939, RS232, RS485 coms
- Allows up to eight control stations
- Cast aluminum control boxes with stainless steel levers (two length options)
- Express Joystick System® ready
- Selectable station transfer rules
- Individual station active indicators
- Individual station neutral indicators
- 12 and 24 volt system power compatible
- Full functionality of Quickshift® gears

DON'T BUY YOUR NEXT BOAT WITHOUT IT

The Twin Disc EJS® (Express Joystick System®) absolutely revolutionizes docking and slow speed maneuvering of diesel powered, conventional shaftline boats.



With easy fingertip movements you control direction and speed – instantaneously and intuitively. No lugging. No lurching. No clunking. All thanks to proven QuickShift® transmission and EC300 control technology.

FEATURES & BENEFITS

- “Push, twist and go” directional maneuvering
- Proven QuickShift® transmission and EC300 control technologies
- Simultaneously and instantaneously controls engines, transmissions and thrusters
- During docking, eliminates steering wheel and control lever activities
- Effortlessly move the boat in any direction and even pivot on its own axis
- Extremely intuitive responsiveness
- Ergonomically friendly
- Remarkably easy to learn

MAINTAIN POSITION WITH THE TOUCH OF A BUTTON

Based on the award-winning EJS®, Express Positioning® maintains a vessel in a fixed position and heading at the touch of a button. A dedicated, highly accurate and reliable GPS receiver determines the vessel’s exact location and heading and the Twin Disc EC300JS controller commands the Twin Disc QuickShift® transmissions and Twin Disc proportional hydraulic thrusters to smoothly and instantaneously maintain the precise station coordinates and heading*. Never before have shaft line boats been able to so effortlessly hold position.

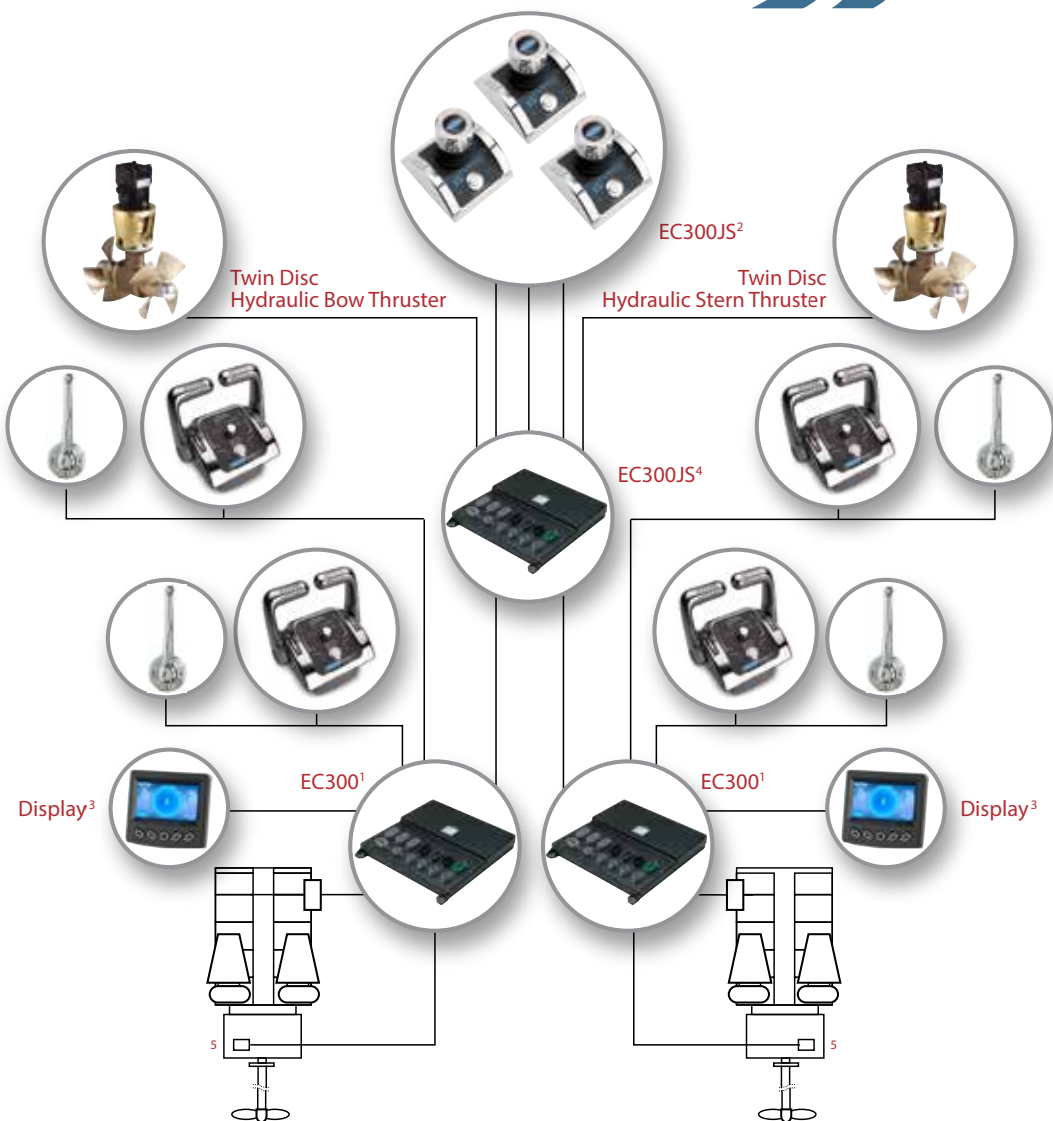
FEATURES & BENEFITS

- Works only in conjunction with Twin Disc Express Joystick System®
- Maximum power available to continuously hold station without producing excess heat or wear
- Compatible with single-and twin-engine applications
- Compatible with twin-engine bow or bow/stern thruster applications
- Can be retrofit to existing EJS® applications
- Based on years of experience with Dynamic Positioning systems in commercial vessels
- Only QuickShift® transmissions provide the smooth, responsive shifting and propulsion control required
- QuickShift® transmissions and precision hydraulic thrusters provide ultra fine maneuvering control at low thrust levels

* Vessel position may not be maintained in all sea and weather conditions.

Captain is responsible for the safe operation of the vessel.

Sample Diagram



- 1 EC300: Standard control system for up to seven digital stations and up to eight engine/transmission shaft lines per vessel.
- 2 EC300JS: Express Joystick System® option for up to six joystick stations.
- 3 Color display option (shown).
- 4 Available GPS option, station-keeping, Express Positioning System®.
- 5 Twin Disc QuickShift® transmissions required.

PLEASE CONTACT TWIN DISC OR A TWIN DISC AUTHORIZED DISTRIBUTOR FOR MORE DETAILS.

A NEW LEVEL OF PERFORMANCE AND CONTROL

Based on the robust Twin Disc EC-300 electronic control platform, Mastertrim[®] is a programmable trimming system which adjusts the trim of the Arneson Surface Drive[®] and the vessel's trim tabs or interceptors to preset positions based on vessel speed and operator-selected modes.

FEATURES & BENEFITS

- Four operating modes selected to suit conditions
- Select manual mode by simply pressing the mode switch, or by manually trimming any one of the drives or tabs
- On-board diagnostics constantly monitor the health of the electronic controls system and displays instant feedback
- No special electronics needed for system troubleshooting
- Frees the operator to focus on driving the boat, rather than adjusting the propulsion system
- Easily programmed during vessel commissioning via the supplied display; the system will guide the operator through static and dynamic calibrations
- Current installations supported:
 - Twin drive with trim tabs or interceptors
 - Tabs or interceptors are required
 - Single helm station only
- System make up:
 - Electronic controls:
 - EC300MT control
 - MT display
 - Valve driver module
 - Interface to ship's GPS
 - Driveline speed sensors
 - Trim and steering position sensors
 - Interface to customer-provided trim and mode switches
 - Optional analog gauge kit
 - Hydraulic system:
 - Twin Disc-supplied integrated trim and steering manifold must be used

EC300DP POWER COMMANDER ELECTRONIC CONTROL SYSTEM

TOTAL PROPULSION CONTROL

The Twin Disc EC300DP propulsion control package allows instantaneous, shockless and virtually constant forward and reverse shifting to keep supply vessels on station as directed by the craft's dynamic positioning system. Twin Disc Power Commander[™] Electronic Controls give you total control with electronic precision and, literally, fingertip ease. With only one lever required per engine, you can control your boat's speed and direction with one hand. You get responsive control over the entire speed range.

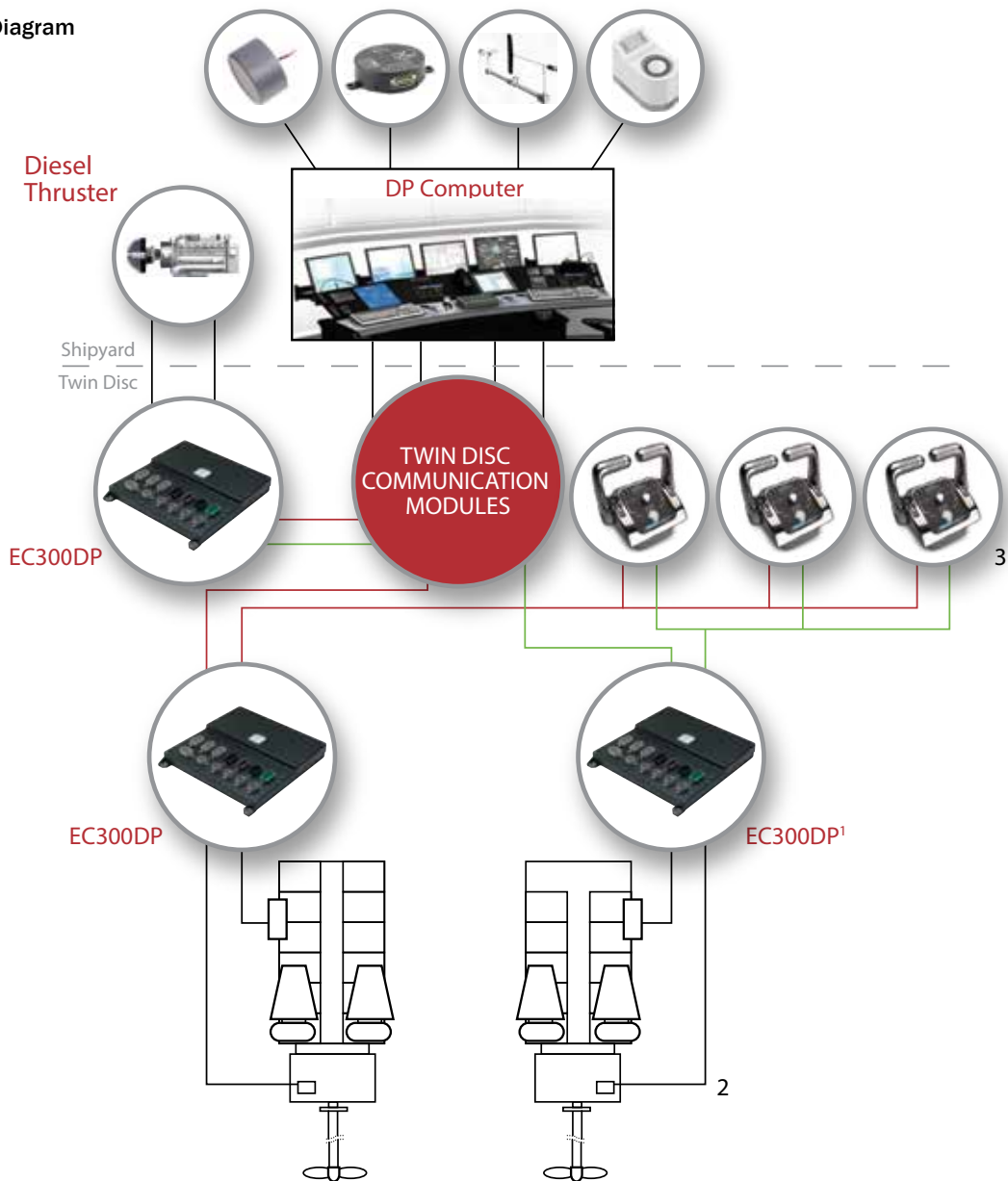
FEATURES & BENEFITS

- High thrust rate change competitive with alternative drive packages
- More than 30x/minute directional reversals
- Designed for conventional shaft lines
- Linear thrust control from 10% of idle engagement to full engine power
- Maintain fuel-efficient engine speeds even at low propeller speeds
- Meets DP2 requirements
- Enhanced installation, monitoring and maintenance/service software
- Versatile, rugged and easy to install
- Designed to interface with all popular electronic engines and transmissions



TWIN DISC DP INTERFACE SYSTEM (EC300DP)

Sample Diagram



1 The Twin Disc EC300DP control system is suitable for DP0, DP1 and DP2 vessels with conventional propellers and two (2) or more engine/transmission drivelines.

2 Twin Disc QuickShift® transmissions required.

3 Up to six digital stations possible.

PLEASE CONTACT TWIN DISC OR A TWIN DISC AUTHORIZED DISTRIBUTOR FOR MORE DETAILS.

GLOBAL SERVICE

The Twin Disc Global Customer Support Program is committed to providing world-class support in the most efficient and consistent manner for all of our customers. Our regional sales offices and vast distribution network support Twin Disc products all over the world. With a corporate presence in every major market region, and our extensive and growing worldwide network of more than 250 distributor sales and service locations in 83 countries, you can rest assured you're never far from Twin Disc support.

Our program offers a wide range of services from the sales process through commissioning and eventually, upgrade. Twin Disc experts are always available, wherever you are, to help you obtain the best possible return on your investment in our products.



Training curriculum provided by the Twin Disc Global Customer Support Program is developed utilizing the latest information and is built upon decades of expertise. Group training in a classroom setting as well as hands-on training with electrical, mechanical and spin test stands provide the most in-depth training for all of our global technicians.

With our vast network of distributor and dealer locations around the world, Twin Disc offers you unprecedented service support. We can put engineering and service expertise on location virtually anywhere. We'll work with you on your particular application and product to ensure optimum results. We're more than just a name you know, Twin Disc is a name you can trust.

Wherever you are when you need support, simply call your local Twin Disc distributor. To find your nearest distributor, go to: www.twindisc.com.



SERVICE CLASSIFICATION DEFINITIONS

PLEASURE CRAFT

Up to 500 hours/year, low load factor usage planing hull vessels where typical full engine throttle operation is less than 10% of total time. The balance of operation at 80% of full engine throttle or less. Marine transmissions for use in long range pleasure cruisers, sportfish charter boats/patrol boats do not qualify for Pleasure Craft Service.

Note: Some revenue-producing applications such as Planing Hull Bristol Bay Gillnetter do qualify under Pleasure Craft rating definition.

LIGHT DUTY

Relatively low hour usage (less than 1500 hours/year) where full throttle operation is 2 hours out of 12. Typical applications include planing hull vessels such as fire boats, sport-fish charter boats and patrol/customs boats. This rating is also applicable to some bow and stern thruster applications.

INTERMEDIATE DUTY

Hour usage of up to 2000 hours/year (for models MG(X)-5114 and smaller) and up to 3000 hours/year (for models larger than MG-5114) with 50% of the operating time at full engine rating.

Typical applications include planing hull vessels such as ferries, fishing boats, some crew boats, and also some displacement hull yachts as well as some bow and stern thruster applications.

MEDIUM DUTY

Hour usage of up to 4000 hours/year with up to 80% of operating time at full engine power. This duty classification is for usage where some variations in engine speed/power occur as part of normal vessel operation.

Typical vessels include mid-water trawlers, crew/supply boats, ferries and some inland water tow boats.

CONTINUOUS DUTY

For use in continuous operation with little or no variation in engine speed/power settings.

Typical vessels include fishing trawlers, tow/tug boats and ocean going vessels.

SPECIAL APPLICATIONS

Some applications such as Dynamic Positioning (DP), Wind Farm Service, and others, require Twin Disc Factory Approval.

IMPORTANT APPLICATION INFORMATION

- Transmission ratings are based on use of the transmission in a torsionally compatible system utilizing a suitable input torsional coupling.
- Ratings are for diesel engines at the indicated speeds, unless otherwise indicated.
- Ratings are shown in SAE horsepower (HP).
- Consult factory for ratings applicable to gasoline engines, gas turbines, or other applications not conforming to the given service class definitions.
- Ratings apply to right hand engines (i.e., counter-clockwise flywheel rotation when viewing rear of engine).
- Transmission ratings should equal or exceed the engine's published ratings for the given application.
- Final marine transmission selections are to be confirmed prior to issuance of the purchase order. For unusual or unique applications, please contact Twin Disc, Inc. for product selection assistance.
- Marine transmission input couplings provided by Twin Disc are configured to interface with engine flywheels which conform to SAE J620 standards. Please consult Twin Disc when use of non-standard flywheels are considered.
- Most of the transmissions listed herein are to be mounted directly on the SAE flywheel housing of the engine. It is necessary that the engine crankshaft endplay be measured before the driven equipment is installed and rechecked after the driven equipment is installed. The endplay measurements, before and after transmission installation, should be the same. If not the same, the driven equipment should be removed and the problem source located and corrected before the engine is started. Engine crankshaft endplay measurement is considered mandatory.
- The given data is subject to modifications/corrections without prior notice.
- Use certified print for installation.

IMPORTANT NOTICE

Disregarding propulsion system torsional compatibility could cause damage to components in the drive train resulting in loss of mobility. At minimum, system incompatibility could result in gear clatter at low speeds.

The responsibility for ensuring that the torsional compatibility of the propulsion system is satisfactory rests with the assembler of the drive and driven equipment.

Torsional vibration analysis can be made by the engine builder, marine survey societies, independent consultants and others. Twin Disc is prepared to assist in finding solutions to potential torsional problems that relate to the equipment of Twin Disc Incorporated's supply.

PLEASURE CRAFT RATINGS FOR STANDARD &
QUICKSHIFT® MARINE TRANSMISSIONS



Model	Ratios	Kilowatts (Horsepower)			Maximum Speed (rpm)
		@ 2300 RPM	@ 2800 RPM	@ 3200 RPM	
MG-340	1.45	26 (35)	26 (35)	26 (35)	4500
	2.00	21 (28)	26 (35)	26 (35)	
	2.60	17 (23)	21 (28)	23 (31)	
MG-360	1.55	40 (54)	50 (67)	56 (75)	5000
	2.00	36 (48)	44 (59)	50 (67)	
	2.45	29 (39)	35 (47)	40 (54)	
	2.83	24 (32)	29 (39)	33 (44)	
MG-5005 A	1.54	83 (111)	101 (136)	110 (148)	4500
	2.00	67 (90)	82 (110)	93 (125)	
	2.47	50 (67)	60 (81)	70 (94)	
MG-5012 SC	1.51	123 (165)	149 (200)	171 (229)	4500
	2.09	106 (142)	129 (173)	148 (198)	
	2.40	94 (126)	115 (154)	131 (176)	
	2.77	82 (110)	100 (134)	114 (153)	
MG-5020 SC	1.50, 2.04	181 (242)	220 (295)	251 (337)	4000
	2.50	145 (194)	176 (236)	201 (270)	
	2.94	123 (165)	150 (201)	171 (229)	
MG-5025 A	1.52, 2.09	115 (154)	140 (188)	160 (215)	4500
	2.40	100 (134)	123 (165)	140 (188)	
MG-5055 A	1.53, 2.08	214 (287)	261 (350)	298 (400)	4000
	2.60	144 (193)	176 (236)	201 (270)	
		@ 2300 RPM	@ 2500 RPM	@ 2800 RPM	
MG-5050 SC*	1.00, 1.23, 1.53, 1.71, 2.04	226 (303)	245 (329)	272 (365)	3300 (5500*)
	2.45	226 (303)	233 (312)	261 (350)	
	3.00	200 (268)	213 (286)	231 (310)	
MG-5050 A*	1.12, 1.26, 1.50, 1.80, 2.04	226 (303)	245 (329)	272 (365)	3300 (5500*)
	2.50	200 (268)	219 (294)	239 (320)	
MG-5050 RV*	1.12, 1.26, 1.50, 1.80, 2.04	226 (303)	245 (329)	272 (365)	3300 (5500*)
	2.50	200 (268)	219 (294)	239 (320)	
MG-5061 SC*	1.15, 1.48, 1.77, 2.00	283 (380)	308 (413)	354 (463)	3300 (5500*)
	2.43	263 (353)	286 (384)	321 (430)	
	3.00	245 (329)	266 (357)	298 (400)	
MG-5061 A*	1.13, 1.28, 1.54, 1.75, 2.00	283 (380)	308 (413)	354 (463)	3300 (5500*)
	2.47	263 (353)	286 (384)	321 (430)	
MG-5061 RV*	1.13, 1.28, 1.54, 1.75, 2.00	283 (380)	308 (413)	354 (463)	3300*
	2.47	263 (353)	286 (384)	321 (430)	
MG-5062 IV*	1.19, 1.53, 1.83	283 (380)	313 (420)	354 (475)	3300 (5500*)
	2.07, 2.51	263 (353)	286 (384)	321 (430)	
MGX-5065 SC MG-5065 SC	1.08, 1.26, 1.47, 1.72, 2.04	393 (527)	425 (570)	474 (636)	3600
	2.43	368 (493)	400 (536)	448 (601)	
MGX-5065 A MG-5065 A	1.08, 1.26, 1.47, 1.72, 2.04	393 (527)	425 (570)	474 (636)	3600
	2.43	368 (493)	400 (536)	448 (601)	

Important – See rating definitions, application information, and torsional compatibility notices on pages 24 and 25.
Ratings shown are in SAE Horsepower (HP). Metric Horsepower equals SAE times 1.014.
Weights are approximate and include flywheel housing adapter and flexible input coupling.

* Consult Twin Disc for gasoline engine ratings and required transmission modifications.

PLEASURE CRAFT RATINGS FOR STANDARD &
QUICKSHIFT® MARINE TRANSMISSIONS (Continued)



Model	Ratios	Kilowatts (Horsepower)			Maximum Speed (rpm)
		@ 2300 RPM	@ 2500 RPM	@ 2800 RPM	
MGX-5075 SC MG-5075 SC	1.06, 1.22, 1.33, 1.53, 1.77, 2.05 2.53 2.88	423 (567) 380 (510) 373 (500)	455 (610) 410 (550) 403 (540)	503 (675) 453 (607) 434 (582)	3500
MGX-5075 A MG-5075 A	1.06, 1.22, 1.33, 1.53, 1.77, 2.05 2.53 2.88	423 (567) 380 (510) 373 (500)	455 (610) 410 (550) 403 (540)	503 (675) 453 (607) 434 (582)	3500
MGX-5075 IV MG-5075 IV	1.03, 1.30, 1.49, 1.72, 1.99, 2.46	392 (526)	423 (567)	468 (628)	3500
MG-5075 SC	0.80, 0.92, 1.00, 1.16	380 (510)	410 (550)	453 (607)	3000
		@ 2100 RPM	@ 2300 RPM	@ 2500 RPM	
MG-5085 SC	1.05, 1.22, 1.42, 1.76 1.96 2.33	416 (558) 374 (502) 343 (460)	433 (580) 410 (550) 365 (490)	459 (615) 445 (597) 388 (520)	3200
MG-5085 A	1.05, 1.22, 1.47, 1.72 2.04 2.43	416 (558) 374 (502) 343 (460)	433 (580) 410 (550) 365 (490)	459 (615) 445 (597) 388 (520)	3200
MG-5082 SC	1.06, 1.11, 1.33, 1.53, 1.77, 2.05, 2.28 2.53 2.88	490 (657) 462 (620) 428 (574)	530 (710) 492 (660) 447 (600)	543 (728) 521 (699) 465 (624)	3200
MG-5082 A	1.06, 1.11, 1.33, 1.53, 1.77, 2.05, 2.28 2.53 2.88	490 (657) 462 (620) 428 (574)	530 (710) 492 (660) 447 (600)	543 (728) 521 (699) 465 (624)	3200
MGX-5086 SC	1.06, 1.11, 1.33, 1.53, 1.77, 2.05, 2.28 2.53 2.88	490 (657) 462 (620) 428 (574)	530 (710) 492 (660) 447 (600)	543 (728) 521 (699) 465 (624)	3200
MGX-5086 A	1.06, 1.11, 1.33, 1.53, 1.77, 2.05, 2.28 2.53 2.88	490 (657) 462 (620) 428 (574)	530 (710) 492 (660) 447 (600)	543 (728) 521 (699) 465 (624)	3200
MG-5091 SC	1.17, 1.45, 1.71, 2.04 2.45 2.95	480 (643) 433 (580) 409 (548)	522 (700) 474 (635) 447 (600)	539 (723) 500 (670) 470 (630)	3000
MG-5090 A	1.45, 1.73, 1.96 2.43	484 (649) 433 (580)	530 (710) 474 (635)	539 (723) 500 (670)	3000
MGX-5095 SC MG-5095 SC	1.15, 1.27, 1.47, 1.71, 2.00, 2.46 2.95	544 (730) 510 (684)	597 (800) 560 (751)	634 (850) 608 (815)	3000
MGX-5095 A MG-5095 A	1.28, 1.52, 1.81, 2.04 2.48	560 (751) 521 (699)	597 (800) 560 (751)	634 (850) 599 (803)	3000
MGX-5096 A	1.28, 1.52, 1.81, 2.04 2.48	618 (829) 556 (746)	671 (900) 596 (800)	718 (963) 638 (856)	3000

Important – See rating definitions, application information, and torsional compatibility notices on pages 24 and 25.
Ratings shown are in SAE Horsepower (HP). Metric Horsepower equals SAE times 1.014.
Weights are approximate and include flywheel housing adapter and flexible input coupling.

PLEASURE CRAFT RATINGS FOR STANDARD &
QUICKSHIFT® MARINE TRANSMISSIONS (Continued)



Model	Ratios	Kilowatts (Horsepower)			Maximum Speed (rpm)
		@ 2100 RPM	@ 2300 RPM	@ 2500 RPM	
MGX-5114 SC MG-5114 SC	0.93, 1.02, 1.12, 1.50, 1.74, 2.04, 2.54 3.00	619 (830) 528 (708)	673 (900) 578 (775)	716 (960) 629 (843)	2800 for 0.93:1 3000 for others
MGX-5114 SC-HD MG-5114 SC-HD	1.50, 1.74, 2.04, 2.54 3.00	619 (830) 528 (708)	673 (900) 578 (775)	716 (960) 629 (843)	3000
MGX-5114 DC MG-5114 DC	3.28, 3.43, 4.17 4.59 4.86	619 (830) 579 (776) 567 (760)	673 (900) 634 (850) 604 (810)	701 (940) 679 (911) 634 (850)	3000
MGX-5114 A MG-5114 A	1.03, 1.20, 1.48, 1.75, 1.92 2.04, 2.50	619 (830)	673 (900)	701 (940)	3000
MGX-5114 RV MG-5114 RV	1.03, 1.20, 1.48, 1.75, 1.92 2.04, 2.50	619 (830)	673 (900)	701 (940)	3000
MGX-5114 IV MG-5114 IV	1.05, 1.23, 1.52, 1.80, 1.98 2.57	619 (830) 599 (803)	673 (900) 649 (870)	701 (940) 677 (908)	3000
MGX-5126 A	1.03, 1.20, 1.48, 1.75, 2.04 2.50	723 (970) 621 (933)	783 (1050) 673 (902)	816 (1094) 701 (940)	3000
		@ 2100 RPM	@ 2300 RPM	@ 2450 RPM	
MGX-5135 SC MG-5135 SC	1.00, 1.10, 1.28, 1.48, 1.73, 2.04 2.57 2.90	817 (1096) 758 (1016) 668 (896)	895 (1200) 847 (1136) 746 (1000)	954 (1279) 901 (1208) 794 (1065)	2800
MGX-5135 A MG-5135 A	1.16, 1.25, 1.53, 1.79, 2.00 2.52	817 (1096) 758 (1016)	895 (1200) 847 (1136)	954 (1279) 901 (1208)	2800
MGX-5135 RV MG-5135 RV	1.16, 1.25, 1.53, 1.79, 2.00 2.52	817 (1096) 758 (1016)	895 (1200) 847 (1136)	954 (1279) 901 (1208)	2800
MGX-5136 SC	1.00, 1.10, 1.28, 1.48, 1.73, 2.04 2.57 2.90	817 (1096) 758 (1016) 668 (896)	895 (1200) 847 (1136) 746 (1000)	954 (1279) 901 (1208) 794 (1065)	2800
MGX-5136 A	1.16, 1.25, 1.53, 1.79, 2.00 2.52	817 (1096) 758 (1016)	895 (1200) 847 (1136)	954 (1279) 901 (1208)	2800
MGX-5136 RV	1.16, 1.25, 1.53, 1.79, 2.00 2.52	817 (1096) 758 (1016)	895 (1200) 847 (1136)	954 (1279) 901 (1208)	2800
MGX-5145 SC MG-5145 SC	1.03, 1.20, 1.33, 1.48, 1.75, 1.96 2.50	949 (1273) 841 (1128)	1007 (1350) 916 (1228)	1050 (1408) 963 (1291)	2500
MGX-5145 A MG-5145 A	1.26, 1.48, 1.75, 1.96 2.50	949 (1273) 878 (1177)	1007 (1350) 956 (1282)	1050 (1408) 1004 (1346)	2500
MGX-5145 RV MG-5145 RV	1.26, 1.48, 1.75, 1.96 2.50	949 (1273) 878 (1177)	1007 (1350) 956 (1282)	1050 (1408) 1004 (1346)	2500
MGX-5146 SC	1.20, 1.33, 1.48, 1.57, 1.75, 1.96 2.5	1070 (1435) 875 (1173)	1142 (1531) 952 (1277)	1195 (1603) 1001 (1342)	2500
MGX-5146 A	1.26, 1.48, 1.75, 1.96 2.50	1070 (1435) 931 (1248)	1142 (1531) 1014 (1360)	1195 (1603) 1065 (1428)	2500
MGX-5146 RV	1.26, 1.48, 1.75, 1.96 2.50	1070 (1435) 931 (1248)	1142 (1531) 1014 (1360)	1195 (1603) 1065 (1428)	2500

Important – See rating definitions, application information, and torsional compatibility notices on pages 24 and 25.
Ratings shown are in SAE Horsepower (HP). Metric Horsepower equals SAE times 1.014.
Weights are approximate and include flywheel housing adapter and flexible input coupling.

Model	Ratios	Kilowatts (Horsepower)			Maximum Speed (rpm)
		@ 2100 RPM	@ 2300 RPM	@ 2450 RPM	
MGX-5147 SC	1.20, 1.33, 1.48, 1.57, 1.75, 1.96 2.50	1070 (1435) 875 (1173)	1142 (1531) 952 (1277)	1195 (1603) 1001 (1342)	2500
MGX-5147 A	1.26, 1.48, 1.75, 1.96 2.50	1070 (1435) 931 (1248)	1142 (1531) 1014 (1360)	1195 (1603) 1065 (1428)	2500
MGX-5147 RV	1.26, 1.48, 1.75, 1.96 2.50	1070 (1435) 931 (1248)	1142 (1531) 1014 (1360)	1195 (1603) 1065 (1428)	2500
MGX-5202 SC	1.17, 1.33, 1.53, 1.76, 2.03, 2.48, 2.92 3.48	886 (1188) 742 (995)	969 (1300) 800 (1073)	1019 (1366) 841 (1128)	2750 (2500 at 1.17:1)
MGX-5204 SC	1.17, 1.33, 1.53, 1.76, 2.03, 2.48, 2.92 3.48	1029 (1380) 984 (1320)	1104 (1480) 1081 (1450)	1104 (1480) 1081 (1450)	2750 (2500 at 1.17:1)
MG-6449 A	1.51, 1.73, 2.07, 2.44 2.95	1007 (1350) 715 (959)	1104 (1480) 782 (1050)	1104 (1480) 782 (1050)	2500
MG-6449 RV	1.51, 1.73, 2.07, 2.44 2.95	1007 (1350) 715 (959)	1104 (1480) 782 (1050)	1104 (1480) 782 (1050)	2500
MGX-6598 DC	2.46, 3.03, 3.48 3.93 4.43	1335 (1790) 1226 (1644) 1070 (1435)	1462 (1961) 1343 (1801) 1172 (1572)	1557 (2088) 1399 (1876) 1249 (1674)	2500
MGX-6599 SC	1.07, 1.30, 1.50, 1.66 1.74, 1.97, 2.04, 2.19 2.45 2.82	1326 (1778) 1295 (1737) 1226 (1644) 1056 (1416)	1452 (1947) 1418 (1902) 1343 (1801) 1156 (1550)	1518 (2036) 1510 (2024) 1431 (1919) 1232 (1652)	2500
MGX-6599 A	1.34, 1.51, 1.74, 2.03, 2.24, 2.48 2.80	1295 (1737) 1056 (1416)	1418 (1902) 1156 (1550)	1510 (2024) 1232 (1652)	2500
MGX-6599 RV	1.34, 1.51, 1.74, 2.03, 2.24 2.48 2.80	1295 (1737) 1226 (1644) 1056 (1416)	1418 (1902) 1343 (1801) 1156 (1550)	1510 (2024) 1431 (1919) 1232 (1652)	2500
MG-6600 DC	3.30, 4.11 4.68, 4.72 5.21 6.05	1319 (1769) 1225 (1643) 1103 (1479) 987 (1324)	1445 (1938) 1342 (1800) 1208 (1620) 1081 (1450)	1539 (2064) 1430 (1918) 1287 (1726) 1152 (1545)	2500
MGX-6620 SC	1.15, 1.33, 1.53, 1.73, 2.03, 2.32, 2.44 2.72	1430 (1918) 1342 (1800)	1566 (2100) 1470 (1971)	1668 (2237) 1556 (2087)	2500
MGX-6620 A	1.55, 1.72, 2.09, 2.28, 2.42 2.73	1430 (1918) 1373 (1841)	1566 (2100) 1504 (2017)	1668 (2237) 1602 (2148)	2500
MGX-6620 RV	1.55, 1.72, 2.09, 2.28, 2.42 2.73	1430 (1918) 1357 (1820)	1566 (2100) 1470 (1971)	1668 (2237) 1536 (2060)	2500
MGX-6650 SC	1.51, 1.88, 2.03, 2.37 2.47, 2.81, 2.93, 3.21	1430 (1918)	1566 (2100)	1602 (2148)	2300 (1.51-2.03) 2500 (2.37-3.21)
MGX-6690 SC	1.51, 1.88, 2.03, 2.37 2.47, 2.81, 2.93, 3.21	1534 (2057)	1680 (2253)	1790 (2400)	2300 (1.51-2.03) 2500 (2.37-3.21)
MGX-6848 SC	1.51, 1.88, 2.03, 2.37, 2.47 2.58, 2.93 3.21	1864 (2500) 1864 (2500) 1746 (2341) 1526 (2046)	2028 (2720) 2028 (2720) 1891 (2536) 1653 (2217)	— 2147 (2879) 2001 (2682) 1748 (2343)	2300 (1.51-2.03) 2500 (2.37-3.21)

Important – See rating definitions, application information, and torsional compatibility notices on pages 24 and 25.
Ratings shown are in SAE Horsepower (HP). Metric Horsepower equals SAE times 1.014.
Weights are approximate and include flywheel housing adapter and flexible input coupling.

Model	Ratios	Kilowatts (Horsepower)			Maximum Speed (rpm)
		@ 1600 RPM	@ 1800 RPM	@ 2100 RPM	
MG-6984 SC	1.18, 1.54, 2.06, 2.29, 2.52	1693 (2270)	1905 (2555)	2222 (2980)	2100
	2.92	1648 (2210)	1854 (2486)	2163 (2900)	
	3.25	1466 (1966)	1649 (2211)	1924 (2580)	
	3.43	1364 (1829)	1534 (2057)	1790 (2400)	
MG-6984 A	1.48, 1.97, 2.50	1693 (2270)	1905 (2555)	2222 (2980)	2100
	2.79	1682 (2256)	1892 (2537)	2207 (2960)	
	2.93	1642 (2202)	1847 (2477)	2155 (2890)	
MG-6984 RV	1.48, 1.97, 2.50	1693 (2270)	1905 (2555)	2222 (2980)	2100
	2.79	1682 (2256)	1892 (2537)	2207 (2960)	
	2.93	1642 (2202)	1847 (2477)	2155 (2890)	
MGX-61000 SC	2.22, 2.54, 2.63, 2.72, 3.03, 3.39	Please contact Twin Disc			2100
MG-61242 SC	1.16, 1.52, 2.08, 2.47	2176 (2918)	2448 (3283)	2856 (3830)	2100
	2.96	2091 (2804)	2353 (3155)	2745 (3681)	
MG-61242 A	1.42, 2.07, 2.44	2176 (2918)	2448 (3283)	2856 (3830)	2100
	2.93	2074 (2781)	2333 (3129)	2722 (3650)	
MG-61242 RV	1.42, 2.07, 2.44	2176 (2918)	2448 (3283)	2856 (3830)	2100
	2.93	2074 (2781)	2333 (3129)	2722 (3650)	
MGX-61500 SC	1.84, 1.98, 2.26, 2.39, 2.45 2.56, 2.86, 2.97, 3.03, 3.41	Please contact Twin Disc			2100

Important – See rating definitions, application information, and torsional compatibility notices on pages 24 and 25.
Ratings shown are in SAE Horsepower (HP). Metric Horsepower equals SAE times 1.014.
Weights are approximate and include flywheel housing adapter and flexible input coupling.

LIGHT DUTY RATINGS FOR STANDARD &
QUICKSHIFT® MARINE TRANSMISSIONS



Model	Ratios	Kilowatts (Horsepower)			Maximum Speed (rpm)
		@ 2300 RPM	@ 2500 RPM	@ 2800 RPM	
MG-5050 SC*	1.00, 1.23, 1.53, 1.71, 2.04	211 (283)	228 (306)	254 (341)	3300 (5500*)
	2.45	211 (283)	216 (290)	223 (299)	
	3.00	187 (251)	198 (266)	216 (290)	
MG-5050 A*	1.12, 1.26, 1.50, 1.80, 2.04	211 (283)	228 (306)	254 (341)	3300 (5500*)
	2.50	187 (251)	204 (274)	223 (299)	
MG-5050 RV*	1.12, 1.26, 1.50, 1.80, 2.04	211 (283)	228 (306)	254 (341)	3300 (5500*)
	2.50	187 (251)	204 (274)	223 (299)	
MG-5061 SC*	1.15, 1.48, 1.77, 2.00	265 (355)	288 (386)	323 (433)	3300 (5500*)
	2.43	246 (330)	268 (360)	300 (402)	
	3.00	229 (307)	248 (333)	279 (374)	
MG-5061 A*	1.13, 1.28, 1.54, 1.75	257 (345)	281 (377)	313 (420)	3300 (5500*)
	2.00, 2.47	246 (330)	268 (360)	300 (402)	
MG-5061 RV*	1.13, 1.28, 1.54, 1.75	257 (345)	281 (377)	313 (420)	3300*
	2.00, 2.47	246 (330)	268 (360)	300 (402)	
MG-5062 IV*	1.19, 1.53, 1.83	265 (355)	292 (392)	331 (444)	3300 (5500*)
	2.07, 2.51	246 (330)	268 (360)	300 (402)	
MGX-5065 SC	1.08, 1.26, 1.47, 1.72, 2.04	376 (504)	407 (546)	453 (607)	3600
MGX-5065 A	2.43	351 (471)	381 (511)	428 (574)	
MG-5065 SC	1.08, 1.26, 1.47, 1.72, 2.04	376 (504)	407 (546)	453 (607)	3600
	2.43	351 (471)	381 (511)	428 (574)	
MG-5065 A	1.08, 1.26, 1.47, 1.72, 2.04	376 (504)	407 (546)	453 (607)	3600
	2.43	351 (471)	381 (511)	428 (574)	
MGX-5075 SC	1.06, 1.22, 1.33, 1.53, 1.77, 2.05	368 (493)	390 (523)	433 (581)	3500
	2.53	355 (476)	383 (514)	423 (567)	
	2.88	348 (467)	375 (503)	406 (544)	
MGX-5075 A	1.06, 1.22, 1.33, 1.53, 1.77, 2.05	368 (493)	390 (523)	433 (581)	3500
	2.53	355 (476)	383 (514)	423 (567)	
	2.88	348 (467)	375 (503)	406 (544)	
MGX-5075 IV	1.03, 1.30, 1.49, 1.72, 1.99, 2.46	355 (476)	383 (514)	423 (567)	3500
MG-5075 IV					
MG-5075 SC	0.80, 0.92, 1.00, 1.16	355 (476)	383 (514)	423 (567)	3000
		@ 2100 RPM	@ 2300 RPM	@ 2500 RPM	
MG-5085 SC	1.05, 1.22, 1.42, 1.76	389 (522)	404 (542)	429 (575)	3200
	1.96	348 (467)	383 (514)	416 (558)	
	2.33	321 (430)	342 (459)	362 (485)	
MG-5085 A	1.05, 1.22, 1.47, 1.72	389 (522)	404 (542)	429 (575)	3200
	2.04	355 (476)	383 (514)	416 (558)	
	2.43	321 (430)	342 (459)	362 (485)	

Important – See rating definitions, application information, and torsional compatibility notices on pages 24 and 25.
Ratings shown are in SAE Horsepower (HP). Metric Horsepower equals SAE times 1.014.
Weights are approximate and include flywheel housing adapter and flexible input coupling.

* Consult Twin Disc for gasoline engine ratings and required transmission modifications.

LIGHT DUTY RATINGS FOR STANDARD &
QUICKSHIFT® MARINE TRANSMISSIONS (Continued)



Model	Ratios	Kilowatts (Horsepower)			Maximum Speed (rpm)
		@ 2100 RPM	@ 2300 RPM	@ 2500 RPM	
MG-5082 SC	1.06, 1.11, 1.33, 1.53, 1.77, 2.05, 2.28, 2.53 2.88	432 (579) 400 (536)	460 (617) 418 (560)	487 (653) 434 (582)	3200
MG-5082 A	1.06, 1.11, 1.33, 1.53, 1.77, 2.05, 2.28, 2.53 2.88	432 (579) 400 (536)	460 (617) 418 (560)	487 (653) 434 (582)	3200
MGX-5086 SC	1.06, 1.11, 1.33, 1.53, 1.77, 2.05, 2.28, 2.53 2.88	432 (579) 400 (536)	460 (617) 418 (560)	487 (653) 434 (582)	3200
MGX-5086 A	1.06, 1.11, 1.33, 1.53, 1.77, 2.05, 2.28, 2.53 2.88	432 (579) 400 (536)	460 (617) 418 (560)	487 (653) 434 (582)	3200
MG-5091 SC	1.17, 1.45, 1.71, 2.04 2.45 2.95	429 (575) 404 (542) 382 (512)	471 (632) 442 (593) 418 (561)	495 (664) 467 (626) 439 (589)	3000
MG-5090 A	1.45, 1.73, 1.96 2.43	429 (575) 404 (542)	471 (632) 442 (593)	494 (662) 434 (626)	3000
MGX-5095 SC	1.15, 1.27, 1.47, 1.71, 2.00, 2.46 2.95	525 (704) 481 (645)	560 (751) 522 (700)	593 (795) 554 (743)	3000
MGX-5095 A	1.28, 1.52, 1.81, 2.04 2.48	525 (704) 485 (650)	560 (751) 522 (700)	594 (797) 558 (748)	3000
MGX-5096A	1.28, 1.52, 1.81, 2.04 2.48	560 (751) 520 (697)	597 (801) 559 (750)	633 (849) 598 (802)	3000
MGX-5114 SC	0.93, 1.02, 1.12, 1.50, 1.74, 2.04, 2.54 3.00	579 (776) 494 (662)	629 (843) 540 (724)	669 (897) 588 (789)	2800 at .93:1 3000 for others
MGX-5114 SC-HD	1.50, 1.74, 2.04, 2.54 3.00	579 (776) 494 (662)	629 (843) 540 (724)	669 (897) 588 (789)	3000
MGX-5114 DC	3.28, 3.43, 4.17 4.59 4.86	579 (776) 542 (727) 530 (711)	629 (843) 591 (793) 565 (758)	656 (880) 634 (850) 575 (771)	3000
MGX-5114 A	1.03, 1.20, 1.48, 1.75, 1.92 2.04, 2.50	580 (777)	629 (843)	655 (878)	3000
MGX-5114 RV	1.03, 1.20, 1.48, 1.75, 1.92 2.04, 2.50	580 (777)	629 (843)	655 (878)	3000
MGX-5114 IV	1.05, 1.23, 1.52, 1.80, 1.98 2.57	580 (777) 560 (751)	629 (843) 607 (814)	655 (878) 632 (848)	3000
MGX-5126 A	1.03, 1.20, 1.48, 1.75, 2.04 2.50	675 (905) 580 (778)	732 (982) 629 (843)	763 (1023) 656 (880)	3000

Important – See rating definitions, application information, and torsional compatibility notices on pages 24 and 25.
Ratings shown are in SAE Horsepower (HP). Metric Horsepower equals SAE times 1.014.
Weights are approximate and include flywheel housing adapter and flexible input coupling.

LIGHT DUTY RATINGS FOR STANDARD &
QUICKSHIFT® MARINE TRANSMISSIONS (Continued)



Model	Ratios	Kilowatts (Horsepower)			Maximum Speed (rpm)
		@ 2100 RPM	@ 2300 RPM	@ 2500 RPM	
MGX-5135 SC MG-5135 SC	1.00, 1.10, 1.28, 1.48, 1.73, 2.04 2.57 2.90	704 (944) 663 (889) 622 (834)	746 (1000) 716 (960) 671 (900)	788 (1057) 768 (1030) 720 (966)	2800
MGX-5135 A MG-5135 A	1.16, 1.25, 1.53, 1.79, 2.00 2.52	704 (944) 663 (889)	746 (1000) 716 (960)	788 (1057) 768 (1030)	2800
MGX-5135 RV MG-5135 RV	1.16, 1.25, 1.53, 1.79, 2.00 2.52	704 (944) 663 (889)	746 (1000) 716 (960)	788 (1057) 768 (1030)	2800
MGX-5136 SC	1.00, 1.10, 1.28, 1.48, 1.73, 2.04 2.57 2.90	704 (944) 663 (889) 622 (834)	746 (1000) 716 (960) 671 (900)	788 (1057) 768 (1030) 720 (966)	2800
MGX-5136 A	1.16, 1.25, 1.53, 1.79, 2.00 2.52	704 (944) 663 (889)	746 (1000) 716 (960)	788 (1057) 768 (1030)	2800
MGX-5136 RV	1.16, 1.25, 1.53, 1.79, 2.00 2.52	704 (944) 663 (889)	746 (1000) 716 (960)	788 (1057) 768 (1030)	2800
MGX-5145 SC MG-5145 SC	1.03, 1.20, 1.33, 1.48, 1.75, 1.96 2.50	808 (1084) 759 (1018)	857 (1150) 820 (1100)	906 (1215) 881 (1181)	2500
MGX-5145 A MG-5145 A	1.26, 1.48, 1.75, 1.96 2.50	808 (1084) 759 (1018)	857 (1150) 820 (1100)	906 (1215) 881 (1181)	2500
MGX-5145 RV MG-5145 RV	1.26, 1.48, 1.75, 1.96 2.50	808 (1084) 759 (1018)	857 (1150) 820 (1100)	906 (1215) 881 (1181)	2500
MGX-5146 SC	1.20, 1.33, 1.48, 1.57, 1.75, 1.96 2.50	918 (1231) 828 (1110)	974 (1306) 895 (1200)	1028 (1379) 961 (1289)	2500
MGX-5146 A	1.26, 1.48, 1.75, 1.96 2.50	918 (1231) 828 (1110)	974 (1306) 895 (1200)	1028 (1379) 961 (1289)	2500
MGX-5146 RV	1.26, 1.48, 1.75, 1.96 2.50	918 (1231) 828 (1110)	974 (1306) 895 (1200)	1028 (1379) 961 (1289)	2500
MGX-5147 SC	1.20, 1.33, 1.48, 1.57, 1.75, 1.96 2.50	918 (1231) 828 (1110)	974 (1306) 895 (1200)	1028 (1379) 961 (1289)	2500
MGX-5147 A	1.26, 1.48, 1.75, 1.96 2.50	918 (1231) 828 (1110)	974 (1306) 895 (1200)	1028 (1379) 961 (1289)	2500
MGX-5147 RV	1.26, 1.48, 1.75, 1.96 2.50	918 (1231) 828 (1110)	974 (1306) 895 (1200)	1028 (1379) 961 (1289)	2500
		@ 1800 RPM	@ 2100 RPM	@ 2300 RPM	
MGX-5202 SC	1.17, 1.33, 1.53, 1.76, 2.03, 2.48, 2.92 3.48	742 (995) 641 (860)	852 (1142) 731 (980)	924 (1239) 789 (1059)	2750
MGX-5204 SC	1.17, 1.33, 1.53, 1.76, 2.03, 2.48, 2.92 3.48	742 (995) 647 (868)	865 (1160) 764 (1025)	979 (1313) 837 (1122)	2750
MG-6449 A	1.51, 1.73 2.07 2.44 2.95	840 (1126) 795 (1067) 711 (953) 545 (731)	978 (1312) 912 (1223) 805 (1080) 635 (852)	1072 (1437) 974 (1306) 861 (1154) 696 (933)	2500
MG-6449 RV	1.51, 1.73 2.07 2.44 2.95	840 (1126) 795 (1067) 711 (953) 545 (731)	978 (1312) 912 (1223) 805 (1080) 635 (852)	1072 (1437) 974 (1306) 861 (1154) 696 (933)	2500
MGX-6598 DC	2.46, 3.03 3.48 3.93 4.43	1000 (1341) 1000 (1341) 952 (1277) 862 (1156)	1167 (1565) 1155 (1549) 1060 (1421) 990 (1328)	1278 (1714) 1241 (1664) 1131 (1517) 1055 (1415)	2500
MGX-6599 SC	1.07, 1.30, 1.50, 1.66, 1.74 1.97, 2.04, 2.19 2.45 2.82	1010 (1354) 1001 (1342) 920 (1234) 821 (1101)	1178 (1580) 1167 (1565) 1073 (1439) 955 (1281)	1244 (1668) 1234 (1655) 1164 (1561) 1042 (1397)	2500

Important - See rating definitions, application information, and torsional compatibility notices on pages 24 and 25.
Ratings shown are in SAE Horsepower (HP). Metric Horsepower equals SAE times 1.014.
Weights are approximate and include flywheel housing adapter and flexible input coupling.

LIGHT DUTY RATINGS FOR STANDARD &
QUICKSHIFT® MARINE TRANSMISSIONS (Continued)



Model	Ratios	Kilowatts (Horsepower)			Maximum Speed (rpm)
		@ 1800 RPM	@ 2100 RPM	@ 2300 RPM	
MGX-6599 A	1.34, 1.51, 1.74, 2.03, 2.24 2.48 2.80	1092 (1464) 935 (1254) 896 (1202)	1221 (1637) 1091 (1463) 1045 (1401)	1301 (1745) 1195 (1602) 1144 (1534)	2500
MGX-6599 RV	1.34, 1.51, 1.74, 2.03, 2.24 2.48 2.80	1092 (1464) 935 (1254) 896 (1202)	1221 (1637) 1091 (1463) 1045 (1401)	1301 (1745) 1195 (1602) 1144 (1534)	2500
MG-6600 DC	3.30, 4.11 4.68, 4.72 5.22 6.05	1009 (1353) 926 (1242) 818 (1097) 722 (968)	1177 (1578) 1080 (1448) 953 (1278) 843 (1129)	1289 (1728) 1182 (1585) 1044 (1400) 923 (1237)	2500
MGX-6620 SC	1.15 1.33, 1.53, 1.73, 2.03, 2.32, 2.44 2.72	1109 (1487) 1109 (1487) 1080 (1448)	1294 (1735) 1294 (1735) 1255 (1683)	1338 (1794) 1417 (1900) 1338 (1794)	2500
MGX-6620 A	1.55, 1.72, 2.09, 2.28, 2.42 2.73	1106 (1483) 1105 (1482)	1294 (1735) 1248 (1674)	1417 (1900) 1330 (1784)	2500
MGX-6620 RV	1.55, 1.72 2.09, 2.28, 2.42 2.73	1122 (1505) 1122 (1505) 1030 (1381)	1309 (1755) 1262 (1692) 1147 (1538)	1434 (1923) 1345 (1804) 1223 (1640)	2500
MGX-6650 SC	1.51, 1.88, 2.03, 2.37 2.47, 2.93, 3.21	1225 (1643)	1417 (1900)	1464 (1963)	2300 (1.51-2.03) 2500 (2.37-3.21)
MGX-6690 SC	1.51, 1.88, 2.03, 2.37 2.47, 2.93, 3.21	1225 (1643)	1417 (1900)	1464 (1963)	2300 (1.51-2.03) 2500 (2.37-3.21)
MGX-6848 SC	1.51, 1.88, 2.03, 2.37, 2.47 2.58, 2.81, 2.93 3.21	1591 (2134) 1483 (1989) 1297 (1739)	1828 (2451) 1699 (2278) 1485 (1991)	1985 (2662) 1841 (2469) 1609 (2158)	2300 (1.51-2.03) 2500 (2.37-3.21)
		@ 1600 RPM	@ 1800 RPM	@ 2100 RPM	
MG-6984 SC	1.18, 1.54, 2.06, 2.29, 2.52 2.92 3.25 3.43	1614 (2164) 1528 (2049) 1269 (1702) 1180 (1582)	1816 (2435) 1719 (2305) 1427 (1914) 1328 (1781)	2119 (2842) 2006 (2690) 1665 (2233) 1549 (2077)	2100
MG-6984 A	1.48, 1.97 2.50 2.79 2.93	1602 (2148) 1552 (2081) 1536 (2060) 1512 (2028)	1802 (2416) 1746 (2341) 1728 (2317) 1701 (2281)	2102 (2819) 2037 (2732) 2016 (2703) 1984 (2661)	2100
MG-6984 RV	1.48, 1.97 2.50 2.79 2.93	1602 (2148) 1552 (2081) 1536 (2060) 1512 (2028)	1802 (2416) 1746 (2341) 1728 (2317) 1701 (2281)	2102 (2819) 2037 (2732) 2016 (2703) 1984 (2661)	2100
MGX-61000 SC	2.22, 2.54, 2.63, 2.72, 3.03, 3.39	Please contact Twin Disc			2100
MG-61242 SC	1.16, 1.52, 2.08 2.47 2.96	2064 (2768) 2207 (2691) 1950 (2615)	2322 (3114) 2258 (3028) 2193 (2941)	2709 (3633) 2634 (3532) 2559 (3432)	2100
MG-61242 A	1.42, 2.07 2.44 2.93	2090 (2803) 2207 (2691) 1950 (2615)	2351 (3153) 2258 (3028) 2193 (2941)	2743 (3678) 2634 (3532) 2559 (3432)	2100
MG-61242 RV	1.42, 2.07 2.44 2.93	2090 (2803) 2207 (2691) 1950 (2615)	2351 (3153) 2258 (3028) 2193 (2941)	2743 (3678) 2634 (3532) 2559 (3432)	2100
MGX-61500 SC	1.84, 1.98, 2.26, 2.39, 2.45 2.56, 2.86, 2.97, 3.03, 3.41	Please contact Twin Disc			2100

Important – See rating definitions, application information, and torsional compatibility notices on pages 24 and 25.
Ratings shown are in SAE Horsepower (HP). Metric Horsepower equals SAE times 1.014.
Weights are approximate and include flywheel housing adapter and flexible input coupling.

Model	Ratios	Kilowatts (Horsepower)			Maximum Speed (rpm)
		@ 2100 RPM	@ 2500 RPM	@ 2800 RPM	
MG-340	1.45	24 (32)	26 (35)	26 (35)	4500
	2.00	17 (23)	20 (27)	23 (31)	
	2.60	13 (17)	15 (20)	18 (24)	
MG-360	1.55	31 (42)	36 (48)	41 (55)	5000
	2.00	28 (38)	33 (44)	37 (50)	
	2.45	23 (31)	29 (39)	31 (42)	
	2.83	19 (26)	22 (30)	25 (34)	
MG-5005 A	1.54, 2.00	47 (63)	56 (75)	63 (85)	4500
	2.47	35 (47)	41 (55)	47 (63)	
MG-5012 SC	1.51	93 (124)	110 (148)	124 (166)	4500
	2.09	81 (108)	96 (129)	108 (144)	
	2.40	72 (96)	85 (115)	96 (128)	
	2.78	62 (84)	74 (100)	83 (111)	
MG-5020 SC	1.50, 2.04	134 (179)	159 (214)	178 (239)	4000
	2.50	107 (144)	128 (171)	143 (192)	
	2.94	93 (124)	110 (148)	124 (166)	
MG-5025 A	1.52, 2.09	81 (109)	97 (130)	108 (145)	4500
	2.40	69 (93)	82 (110)	92 (123)	
MG-5055 A	1.53, 2.08	147 (197)	175 (235)	196 (263)	4000
	2.60	99 (135)	118 (160)	132 (179)	
MG-5050 SC	1.00, 1.23, 1.53, 1.71, 2.04, 2.45	157 (211)	187 (251)	209 (280)	3300
	3.00	142 (190)	170 (228)	194 (260)	
MG-5050 A	1.12, 1.26, 1.50, 1.80, 2.04, 2.50	157 (211)	187 (251)	209 (280)	3300
MG-5050 RV	1.12, 1.26, 1.50, 1.80, 2.04, 2.50	157 (211)	187 (251)	209 (280)	3300
MG-5061 SC	1.15, 1.48, 1.77, 2.00, 2.43, 3.00	201 (270)	239 (320)	261 (350)	3300
MG-5061 A	1.13, 1.28, 1.54, 1.75, 2.00, 2.47	201 (270)	239 (320)	261 (350)	3300
MG-5061 RV	1.13, 1.28, 1.54, 1.75, 2.00, 2.47	201 (270)	239 (320)	261 (350)	3300
MG-5062 IV	1.19, 1.53, 1.83, 2.07, 2.51	201 (270)	239 (320)	261 (350)	3300
MGX-5065 SC	1.08, 1.26, 1.47, 1.72, 2.04	279 (374)	329 (441)	367 (492)	3600
MG-5065 SC	2.43	254 (341)	302 (405)	338 (453)	
MGX-5065 A	1.08, 1.26, 1.47, 1.72, 2.04	279 (374)	329 (441)	367 (492)	3600
MG-5065 A	2.43	254 (341)	302 (405)	338 (453)	
MGX-5075 SC	1.06, 1.22, 1.33, 1.53, 1.77, 2.05	283 (380)	310 (416)	324 (434)	3500
MG-5075 SC	2.53	268 (360)	298 (400)	313 (420)	
	2.88	261 (350)	287 (385)	306 (410)	
MGX-5075 A	1.06, 1.22, 1.33, 1.53, 1.77, 2.05	283 (380)	310 (416)	324 (434)	3500
MG-5075 A	2.53	268 (360)	298 (400)	313 (420)	
	2.88	261 (350)	287 (385)	306 (410)	
MGX-5075 IV	1.03, 1.30, 1.49, 1.72, 1.99, 2.46	268 (360)	298 (400)	313 (420)	3500
MG-5075 IV					
MG-5075 SC	0.80, 0.92, 1.00, 1.16	268 (360)	298 (400)	313 (420)	3000

Important – See rating definitions, application information, and torsional compatibility notices on pages 24 and 25.
Ratings shown are in SAE Horsepower (HP). Metric Horsepower equals SAE times 1.014.
Weights are approximate and include flywheel housing adapter and flexible input coupling.

Model	Ratios	Kilowatts (Horsepower)			Maximum Speed (rpm)
		@ 2100 RPM	@ 2500 RPM	@ 2800 RPM	
MG-5085 SC	1.05, 1.22, 1.42, 1.76, 1.96 2.33	287 (385) 268 (360)	332 (445) 302 (405)	365 (490) 328 (440)	3200
MG-5085 A	1.05, 1.22, 1.47, 1.72, 2.04 2.43	287 (385) 268 (360)	332 (445) 302 (405)	365 (490) 328 (440)	3200
MG-5082 SC	1.06, 1.11, 1.33, 1.53, 1.77, 2.05, 2.28, 2.53 2.88	351 (471) 340 (456)	396 (531) 384 (515)	428 (574) 415 (557)	3200
MG-5082 A	1.06, 1.11, 1.33, 1.53, 1.77, 2.05, 2.28, 2.53 2.88	351 (471) 340 (456)	396 (531) 384 (515)	428 (574) 415 (557)	3200
MGX-5086 SC	1.06, 1.11, 1.33, 1.53, 1.77, 2.05, 2.28, 2.53 2.88	351 (471) 340 (456)	396 (531) 384 (515)	428 (574) 415 (557)	3200
MGX-5086 A	1.06, 1.11, 1.33, 1.53, 1.77, 2.05, 2.28, 2.53 2.88	351 (471) 340 (456)	396 (531) 384 (515)	428 (574) 415 (557)	3200
MG-5091 SC	1.17, 1.45, 1.71, 2.04 2.45, 2.95 3.33	354 (475) 336 (450) 268 (360)	403 (540) 374 (501) 309 (415)	425 (570) 403 (540) 346 (464)	3000
MG-5091 DC	3.82 4.50 5.05	321 (431) 298 (400) 251 (336)	377 (506) 350 (470) 298 (400)	420 (563) 384 (515) 334 (448)	3000
MG-5090 A	1.45, 1.73, 1.96 2.43	343 (460) 321 (430)	365 (490) 343 (460)	382 (512) 359 (481)	3000
		@ 1800 RPM	@ 2100 RPM	@ 2300 RPM	
MGX-5095 SC MG-5095 SC	1.15, 1.27, 1.47, 1.71, 2.00, 2.46 2.95	368 (493) 332 (445)	410 (550) 380 (510)	438 (587) 412 (552)	3000
MGX-5095 A MG-5095 A	1.28, 1.52, 1.81, 2.04 2.48	367 (492) 336 (451)	410 (550) 380 (510)	438 (587) 409 (548)	3000
MGX-5096 A	1.28, 1.52, 1.81, 2.04 2.48	367 (492) 336 (451)	410 (550) 380 (510)	438 (587) 409 (548)	3000
MGX-5114 SC MG-5114 SC	0.93, 1.02, 1.12, 1.50, 1.74, 2.04 2.54 3.00	448 (601) 410 (550) 380 (510)	504 (676) 466 (625) 451 (605)	552 (740) 500 (671) 492 (660)	2800 at .93:1 3000 for others
MGX-5114 SC-HD MG-5114 SC-HD	1.50, 1.74, 2.04 2.54 3.00	448 (601) 410 (550) 380 (510)	504 (676) 466 (625) 451 (605)	552 (740) 500 (671) 492 (660)	3000
MGX-5114 DC MG-5114 DC	3.28, 3.43, 4.17 4.59 4.86	431 (580) 388 (520) 375 (503)	504 (676) 448 (601) 429 (575)	537 (720) 477 (640) 463 (621)	3000
MGX-5114 A MG-5114 A	1.03, 1.20, 1.48, 1.75, 1.92, 2.04 2.50	404 (542) 351 (471)	466 (625) 400 (536)	504 (676) 433 (581)	3000
MGX-5114 RV MG-5114 RV	1.03, 1.20, 1.48, 1.75, 1.92, 2.04 2.50	404 (542) 351 (471)	466 (625) 400 (536)	504 (676) 433 (581)	3000
MGX-5114 IV MG-5114 IV	1.05, 1.23, 1.52, 1.80, 1.98 2.57	404 (542) 351 (471)	466 (625) 400 (536)	504 (676) 433 (581)	3000

Important – See rating definitions, application information, and torsional compatibility notices on pages 24 and 25.
Ratings shown are in SAE Horsepower (HP). Metric Horsepower equals SAE times 1.014.
Weights are approximate and include flywheel housing adapter and flexible input coupling.

Model	Ratios	Kilowatts (Horsepower)			Maximum Speed (rpm)
		@ 1800 RPM	@ 2100 RPM	@ 2300 RPM	
MGX-5126 A	1.03, 1.20, 1.48, 1.75, 2.04 2.50	404 (542) 351 (471)	466 (625) 400 (536)	504 (676) 433 (581)	3000
MGX-5135 SC	1.00, 1.10, 1.28, 1.48, 1.73, 2.04, 2.57 2.90	529 (709) 493 (661)	560 (751) 522 (700)	600 (805) 560 (751)	2800
MGX-5135 A	1.16, 1.25, 1.53, 1.79, 2.00, 2.52	529 (709)	560 (751)	600 (805)	2800
MGX-5135 RV	1.16, 1.25, 1.53, 1.79, 2.00, 2.52	529 (709)	560 (751)	600 (805)	2800
MG-5135 SC	1.00, 1.10, 1.28, 1.48, 1.73, 2.04, 2.57 2.90	529 (709) 493 (661)	560 (751) 522 (700)	600 (805) 560 (751)	2800
MG-5135 A	1.16, 1.25, 1.53, 1.79, 2.00, 2.52	529 (709)	560 (751)	600 (805)	2800
MG-5135 RV	1.16, 1.25, 1.53, 1.79, 2.00, 2.52	529 (709)	560 (751)	600 (805)	2800
MGX-5136 SC	1.00, 1.10, 1.28, 1.48, 1.73, 2.04, 2.57 2.90	529 (709) 493 (661)	560 (751) 522 (700)	600 (805) 560 (751)	2800
MGX-5136 A	1.16, 1.25, 1.53, 1.79, 2.00, 2.52	529 (709)	560 (751)	600 (805)	2800
MGX-5136 RV	1.16, 1.25, 1.53, 1.79, 2.00, 2.52	529 (709)	560 (751)	600 (805)	2800
MGX-5145 SC	1.03, 1.20, 1.33, 1.48, 1.75, 1.96 2.50	698 (936) 587 (787)	746 (1000) 671 (900)	836 (1121) 726 (974)	2500
MG-5145 SC	2.50	587 (787)	671 (900)	726 (974)	2500
MGX-5145 A	1.26, 1.48, 1.75, 1.96 2.50	698 (936) 587 (787)	746 (1000) 671 (900)	836 (1121) 726 (974)	2500
MG-5145 A	2.50	587 (787)	671 (900)	726 (974)	2500
MGX-5145 RV	1.26, 1.48, 1.75, 1.96 2.50	698 (936) 587 (787)	746 (1000) 671 (900)	836 (1121) 726 (974)	2500
MG-5145 RV	2.50	587 (787)	671 (900)	726 (974)	2500
MGX-5146 SC	1.20, 1.33, 1.57, 1.75, 1.96 2.50	753 (1010) 615 (825)	806 (1081) 702 (941)	903 (1211) 760 (1019)	2500
MGX-5146 A	1.26, 1.48, 1.75, 1.96 2.50	753 (1010) 615 (825)	806 (1081) 702 (941)	903 (1211) 760 (1019)	2500
MGX-5146 RV	1.26, 1.48, 1.75, 1.96 2.50	753 (1010) 615 (825)	806 (1081) 702 (941)	903 (1211) 760 (1019)	2500
MGX-5147 SC	1.20, 1.33, 1.48, 1.57, 1.75, 1.96 2.50	753 (1010) 615 (825)	806 (1081) 702 (941)	903 (1211) 760 (1019)	2500
MGX-5147 A	1.26, 1.48, 1.75, 1.96 2.50	753 (1010) 615 (825)	806 (1081) 702 (941)	903 (1211) 760 (1019)	2500
MGX-5147 RV	1.26, 1.48, 1.75, 1.96 2.50	753 (1010) 615 (825)	806 (1081) 702 (941)	903 (1211) 760 (1019)	2500

Important – See rating definitions, application information, and torsional compatibility notices on pages 24 and 25.
Ratings shown are in SAE Horsepower (HP). Metric Horsepower equals SAE times 1.014.
Weights are approximate and include flywheel housing adapter and flexible input coupling.

Model	Ratios	Kilowatts (Horsepower)			Maximum Speed (rpm)
		@ 1800 RPM	@ 2100 RPM	@ 2300 RPM	
MGX-516	3.06	530 (711)	573 (768)	594 (797)	2500
	3.50	518 (695)	549 (736)	569 (763)	
	4.04	494 (662)	521 (699)	540 (724)	
	4.52	484 (649)	510 (684)	526 (705)	
	5.05	468 (628)	492 (660)	508 (681)	
	6.00	419 (562)	470 (630)	498 (668)	
MGX-5170 DC	3.12, 3.54, 4.06, 4.50, 5.03, 5.95	537 (720)	578 (775)	578 (775)	2500
	6.53, 6.95	467 (626)	545 (731)	561 (752)	
MGX-5202 SC	1.17, 1.33, 1.53, 1.76, 2.03, 2.48, 2.92 3.48	630 (845)	720 (966)	778 (1043)	2750 (2500 at 1.17:1)
MGX-5204 SC	1.17, 1.33, 1.53, 1.76, 2.03, 2.48, 2.92 3.48	727 (975)	858 (1151)	969 (1299)	2750
		630 (845)	720 (966)	781 (1047)	(2500 at 1.17:1)
MGX-5222 DC	4.03, 4.59, 5.04, 6.10, 6.55, 6.96	630 (845)	720 (966)	778 (1043)	2500
MGX-5225 DC	4.03, 4.59, 5.04, 5.57, 6.10	727 (975)	858 (1151)	869 (1165)	2500
MGX-5321 DC	3.35, 4.06, 4.42, 4.96, 5.46, 5.96	1044 (1400)	1163 (1560)	1178 (1580)	2400
	6.39	893 (1198)	1022 (1371)	1108 (1486)	
		@ 1600 RPM	@ 1800 RPM	@ 2100 RPM	
MG-540 (with flexible coupling)	1.93, 2.58, 2.90, 3.26	1049 (1407)	1180 (1582)	—	1900
	3.91	893 (1198)	1011 (1356)	1193 (1600)	2400
	4.10, 4.60	1049 (1407)	1180 (1582)	—	1900
	5.17	1038 (1392)	1168 (1566)	1362 (1826)	2100
	6.18	867 (1163)	975 (1307)	1138 (1526)	2400
	7.00	766 (1027)	861 (1155)	1005 (1348)	2400
	7.47	718 (963)	808 (1084)	943 (1265)	2400
MG-5506	4.03, 4.55, 4.96, 5.44	1323 (1774)	1489 (1998)	—	2000
	6.00	1197 (1605)	1347 (1806)	—	
MGX-5600	2.53, 2.98, 3.51, 4.03	1602 (2148)	1805 (2421)	2105 (2823)	2100
	4.63, 5.04	1602 (2148)	1805 (2421)	2095 (2809)	
	5.76	1598 (2143)	1760 (2360)	1770 (2374)	
	6.04	1353 (1814)	1502 (2014)	1717 (2302)	
		@ 1800 RPM	@ 2100 RPM	@ 2300 RPM	
MG-6449 A	1.51, 1.73	769 (1031)	897 (1203)	958 (1285)	2500
	2.07	639 (857)	746 (1000)	794 (1065)	
	2.44	555 (744)	647 (868)	692 (928)	
	2.95	496 (665)	577 (774)	617 (828)	
MG-6449 RV	1.51, 1.73	769 (1031)	897 (1203)	958 (1285)	2500
	2.07	639 (857)	746 (1000)	794 (1065)	
	2.44	555 (744)	647 (868)	692 (928)	
	2.95	496 (665)	577 (774)	617 (828)	
MGX-6598 DC	2.46, 3.03	882 (1183)	1000 (1341)	1067 (1431)	2500
	3.48	849 (1139)	945 (1267)	1008 (1352)	
	3.93	774 (1038)	861 (1155)	918 (1231)	
	4.43	722 (968)	804 (1078)	857 (1149)	
MGX-6599 SC	1.07, 1.30, 1.50, 1.66, 1.74, 1.97, 2.04	862 (1156)	960 (1287)	1023 (1372)	2500
	2.19, 2.45	844 (1132)	940 (1261)	1002 (1344)	
	2.82	728 (976)	811 (1088)	864 (1159)	

Important – See rating definitions, application information, and torsional compatibility notices on pages 24 and 25.
Ratings shown are in SAE Horsepower (HP). Metric Horsepower equals SAE times 1.014.
Weights are approximate and include flywheel housing adapter and flexible input coupling.

Model	Ratios	Kilowatts (Horsepower)			Maximum Speed (rpm)
		@ 1800 RPM	@ 2100 RPM	@ 2300 RPM	
MGX-6599 A	1.34, 1.51, 1.74, 2.03, 2.24 2.48 2.80	890 (1193) 841 (1128) 815 (1093)	992 (1330) 937 (1257) 908 (1218)	1057 (1417) 999 (1340) 967 (1297)	2500
MGX-6599 RV	1.34, 1.51, 1.74, 2.03, 2.24 2.48 2.80	890 (1193) 841 (1128) 815 (1093)	992 (1330) 937 (1257) 908 (1218)	1057 (1417) 999 (1340) 967 (1297)	2500
MG-6600 DC	3.30 4.11 4.68, 4.72 5.21 6.05	819 (1098) 819 (1098) 777 (1042) 693 (929) 617 (828)	955 (1281) 955 (1281) 906 (1215) 809 (1085) 719 (964)	1046 (1403) 1018 (1365) 966 (1295) 886 (1188) 788 (1057)	2500
MGX-6620 SC	1.15, 1.33, 1.53, 1.73 2.03 2.32 2.44 2.72	1047 (1404) 1025 (1375) 1019 (1366) 987 (1324) 915 (1227)	1166 (1564) 1142 (1531) 1136 (1523) 1100 (1475) 1019 (1366)	1191 (1597) 1184 (1588) 1184 (1588) 1172 (1572) 1086 (1456)	2500
MGX-6620 A	1.55, 1.72, 2.09 2.28, 2.42 2.73	1103 (1479) 1028 (1379) 910 (1220)	1234 (1655) 1145 (1535) 1014 (1360)	1315 (1763) 1220 (1636) 1080 (1448)	2500
MGX-6620 RV	1.55 1.72 2.09 2.28, 2.42 2.73	1031 (1383) 998 (1338) 947 (1270) 920 (1234) 836 (1121)	1149 (1541) 1112 (1491) 1055 (1415) 1025 (1375) 932 (1250)	1224 (1641) 1185 (1589) 1125 (1509) 1092 (1464) 993 (1332)	2500
MGX-6650 SC	1.51, 1.88, 2.03, 2.37 2.47, 2.93, 3.21	1069 (1434)	1268 (1700)	1386 (1859)	2300 (1.51-2.03) 2500 (2.37-3.21)
MGX-6690 SC	1.51, 1.88, 2.03, 2.37, 2.47 2.93 3.21	1201 (1611) 1201 (1611) 1201 (1611)	1380 (1851) 1318 (1767) 1280 (1716)	1438 (1928) 1386 (1859) 1386 (1859)	2300 (1.51-2.03) 2500 (2.37-3.21)
MGX-6848 SC	1.51, 1.88, 2.03, 2.37, 2.47, 2.58, 2.81, 2.93 3.21	1342 (1800) 1269 (1702)	1566 (2100) 1453 (1948)	1715 (2300) 1575 (2112)	2300 (1.51-2.03) 2500 (2.37-3.21)
		@ 1600 RPM	@ 1800 RPM	@ 2100 RPM	
MG-6984 SC	1.18, 1.54, 2.06, 2.29, 2.52, 2.92 3.25 3.43	1470 (1971) 1244 (1668) 1000 (1341)	1654 (2218) 1399 (1876) 1125 (1509)	1929 (2587) 1632 (2189) 1313 (1761)	2100
MG-6984 A	1.48, 1.97, 2.50, 2.79 2.93	1504 (2017) 1462 (1961)	1692 (2269) 1645 (2206)	1974 (2647) 1919 (2573)	2100
MG-6984 RV	1.48, 1.97, 2.50, 2.79 2.93	1504 (2017) 1462 (1961)	1692 (2269) 1645 (2206)	1974 (2647) 1919 (2573)	2100
MGX-61000 SC	2.22, 2.54, 2.63, 2.72, 3.03, 3.39	Please contact Twin Disc			2100
MG-61242 SC	1.16, 1.52, 2.08 2.47 2.96	2001 (2683) 1960 (2628) 1949 (2614)	2251 (3019) 2205 (2957) 2193 (2941)	2626 (3521) 2571 (3448) 2559 (3432)	2100
MG-61242 A	1.42, 2.07 2.44, 2.93	2078 (2787) 1949 (2614)	2338 (3135) 2193 (2941)	2728 (3658) 2559 (3432)	2100
MG-61242 RV	1.42, 2.07 2.44, 2.93	2078 (2787) 1949 (2614)	2338 (3135) 2193 (2941)	2728 (3658) 2559 (3432)	2100
MGX-61500 SC	1.84, 1.98, 2.26, 2.39, 2.45 2.56, 2.86, 2.97, 3.03, 3.41	Please contact Twin Disc			2100

Important – See rating definitions, application information, and torsional compatibility notices on pages 24 and 25.
Ratings shown are in SAE Horsepower (HP). Metric Horsepower equals SAE times 1.014.
Weights are approximate and include flywheel housing adapter and flexible input coupling.

Model	Ratios	Kilowatts (Horsepower)			Maximum Speed (rpm)
		@ 1800 RPM	@ 2100 RPM	@ 2300 RPM	
MG-5050 SC	1.00, 1.23, 1.53, 1.71, 2.04, 2.45 3.00	115 (154) 102 (137)	128 (172) 119 (160)	140 (188) 133 (178)	3300
MG-5050 A	1.12, 1.26, 1.50, 1.80, 2.04, 2.50	115 (154)	128 (172)	140 (188)	3300
MG-5050 RV	1.12, 1.26, 1.50, 1.80, 2.04, 2.50	115 (154)	128 (172)	140 (188)	3300
MG-5061 SC	1.15, 1.48, 1.77, 2.00, 2.43 3.00	135 (181) 126 (169)	157 (211) 147 (197)	171 (229) 160 (215)	3300
MG-5061 A	1.13, 1.28, 1.54, 1.75, 2.00 2.47	135 (181) 126 (169)	157 (211) 147 (197)	171 (229) 160 (215)	3300
MG-5061 RV	1.13, 1.28, 1.54, 1.75, 2.00 2.47	135 (181) 126 (169)	157 (211) 147 (197)	171 (229) 160 (215)	3300
MG-5062 IV	1.19, 1.53, 1.83, 2.07, 2.51	135 (181)	157 (211)	171 (229)	3300
MGX-5065 SC	1.08, 1.26, 1.47, 1.72, 2.04	227 (304)	262 (351)	285 (382)	3600
MG-5065 SC	2.43	208 (279)	243 (326)	266 (357)	3600
MGX-5065 A	1.08, 1.26, 1.47, 1.72, 2.04	227 (304)	262 (351)	285 (382)	3600
MG-5065 A	2.43	208 (279)	243 (326)	266 (357)	3600
MGX-5075 SC	1.06, 1.22, 1.33, 1.53, 1.77, 2.05	205 (275)	230 (308)	246 (330)	3500
MG-5075 SC	2.53, 2.88	205 (275)	230 (308)	246 (330)	3500
MGX-5075 A	1.06, 1.22, 1.33, 1.53, 1.77, 2.05	205 (275)	230 (308)	246 (330)	3500
MG-5075 A	2.53, 2.88	205 (275)	230 (308)	246 (330)	3500
MGX-5075 IV	1.03, 1.30, 1.49, 1.72, 1.99, 2.46	205 (275)	230 (308)	246 (330)	3500
MG-5075 IV	1.03, 1.30, 1.49, 1.72, 1.99, 2.46	205 (275)	230 (308)	246 (330)	3500
MG-5085 SC	1.05, 1.22, 1.42, 1.76, 1.96 2.33	250 (335) 225 (302)	279 (375) 254 (341)	295 (396) 271 (363)	3200
MG-5085 A	1.05, 1.22, 1.47, 1.72, 2.04 2.43	250 (335) 217 (291)	279 (375) 248 (333)	295 (396) 268 (360)	3200
MG-5082 SC	1.06, 1.11, 1.33, 1.53, 1.77, 2.05, 2.28, 2.53 2.88	301 (404) 273 (366)	336 (451) 313 (420)	350 (469) 331 (444)	3200
MG-5082 A	1.06, 1.11, 1.33, 1.53, 1.77, 2.05, 2.28, 2.53 2.88	301 (404) 273 (366)	336 (451) 313 (420)	350 (469) 331 (444)	3200
MGX-5086 SC	1.06, 1.11, 1.33, 1.53, 1.77, 2.05, 2.28, 2.53 2.88	301 (404) 273 (366)	336 (451) 313 (420)	350 (469) 331 (444)	3200
MGX-5086 A	1.06, 1.11, 1.33, 1.53, 1.77, 2.05, 2.28, 2.53 2.88	301 (404) 273 (366)	336 (451) 313 (420)	350 (469) 331 (444)	3200

Important – See rating definitions, application information, and torsional compatibility notices on pages 24 and 25.
Ratings shown are in SAE Horsepower (HP). Metric Horsepower equals SAE times 1.014.
Weights are approximate and include flywheel housing adapter and flexible input coupling.

MEDIUM DUTY RATINGS FOR STANDARD &
QUICKSHIFT® MARINE TRANSMISSIONS (Continued)



Model	Ratios	Kilowatts (Horsepower)			Maximum Speed (rpm)
		@ 1800 RPM	@ 2100 RPM	@ 2300 RPM	
MG-5091 SC	1.17, 1.45, 1.71, 2.04	274 (368)	317 (425)	347 (465)	3000
	2.45, 2.95	265 (355)	308 (413)	330 (443)	
	3.33	219 (293)	254 (340)	274 (368)	
MG-5091 DC	3.82, 4.50	262 (351)	303 (406)	330 (443)	3000
	5.05	210 (281)	245 (328)	268 (359)	
	1.45, 1.73, 1.96	267 (358)	309 (415)	321 (430)	
MG-5090 A	2.43	250 (335)	291 (390)	302 (405)	3000
MGX-5095 SC	1.15, 1.27, 1.47, 1.71, 2.00, 2.46	336 (451)	374 (502)	399 (535)	3000
MG-5095 SC	2.95	319 (428)	360 (483)	385 (516)	
MGX-5095 A	1.28, 1.52, 1.81, 2.04, 2.48	319 (428)	358 (480)	385 (516)	3000
MGX-5096 A	1.28, 1.52, 1.81, 2.04, 2.48	319 (428)	358 (480)	385 (516)	3000
MGX-5114 SC	0.93, 1.02, 1.12, 1.50, 1.74, 2.04, 2.54	394 (528)	451 (605)	489 (656)	2800 at .93:1 3000 for others
MG-5114 SC	3.00	361 (484)	410 (550)	443 (595)	
MGX-5114 SC-HD	1.50, 1.74, 2.04, 2.54	394 (528)	451 (605)	489 (656)	3000
MG-5114 SC-HD	3.00	361 (484)	410 (550)	443 (595)	
MGX-5114 DC	3.28, 3.43, 4.17, 4.59, 4.86	361 (484)	419 (562)	437 (586)	3000
MG-5114 DC					
MGX-5114 A	1.03, 1.20, 1.48, 1.75, 1.92, 2.04	357 (479)	407 (546)	440 (590)	3000
MG-5114 A	2.50	338 (453)	385 (516)	417 (559)	
MGX-5114 RV	1.03, 1.20, 1.48, 1.75, 1.92, 2.04	357 (479)	407 (546)	440 (590)	3000
MG-5114 RV	2.50	338 (453)	385 (516)	417 (559)	
MGX-5114 IV	1.05, 1.23, 1.52, 1.80, 1.98	357 (479)	407 (546)	440 (590)	3000
MG-5114 IV	2.57	338 (453)	385 (516)	417 (559)	
MGX-5126A	1.03, 1.20, 1.48, 1.75, 2.04	357 (479)	407 (546)	440 (590)	3000
	2.50	338 (453)	385 (516)	417 (559)	

Important – See rating definitions, application information, and torsional compatibility notices on pages 24 and 25.
Ratings shown are in SAE Horsepower (HP). Metric Horsepower equals SAE times 1.014.
Weights are approximate and include flywheel housing adapter and flexible input coupling.

MEDIUM DUTY RATINGS FOR STANDARD &
QUICKSHIFT® MARINE TRANSMISSIONS (Continued)



Model	Ratios	Kilowatts (Horsepower)			Maximum Speed (rpm)
		@ 1600 RPM	@ 1800 RPM	@ 2100 RPM	
MGX-5135 SC MG-5135 SC	1.00, 1.10, 1.28, 1.48, 1.73, 2.04, 2.57 2.90	447 (599) 413 (554)	485 (650) 448 (601)	542 (727) 500 (671)	2800
MGX-5135 A MG-5135 A	1.16, 1.25, 1.53, 1.79, 2.00, 2.52	447 (599)	485 (650)	542 (727)	2800
MGX-5135 RV MG-5135 RV	1.16, 1.25, 1.53, 1.79, 2.00, 2.52	447 (599)	485 (650)	542 (727)	2800
MGX-5136 SC	1.00, 1.10, 1.28, 1.48, 1.73, 2.04, 2.57 2.90	447 (599) 413 (554)	485 (650) 448 (601)	542 (727) 500 (671)	2800
MGX-5136 A	1.16, 1.25, 1.53, 1.79, 2.00, 2.52	447 (599)	485 (650)	542 (727)	2800
MGX-5136 RV	1.16, 1.25, 1.53, 1.79, 2.00, 2.52	447 (599)	485 (650)	542 (727)	2800
MGX-5145 SC MG-5145 SC	1.03, 1.20, 1.33, 1.48, 1.75, 1.96 2.50	553 (742) 473 (634)	596 (800) 522 (700)	637 (854) 597 (801)	2500
MGX-5145 A MG-5145 A	1.26, 1.48, 1.75, 1.96 2.50	553 (742) 473 (634)	596 (800) 522 (700)	637 (854) 597 (801)	2500
MGX-5145 RV MG-5145 RV	1.26, 1.48, 1.75, 1.96 2.50	553 (742) 473 (634)	596 (800) 522 (700)	637 (854) 597 (801)	2500
MGX-5146 SC	1.20, 1.33, 1.48, 1.57, 1.75, 1.96 2.50	623 (835) 500 (671)	671 (900) 552 (740)	714 (957) 631 (846)	2500
MGX-5146 A	1.26, 1.48, 1.75, 1.96 2.50	623 (835) 500 (671)	671 (900) 552 (740)	714 (957) 631 (846)	2500
MGX-5146 RV	1.26, 1.48, 1.75, 1.96 2.50	623 (835) 500 (671)	671 (900) 552 (740)	714 (957) 631 (846)	2500
MGX-5147 SC	1.20, 1.33, 1.48, 1.57, 1.75, 1.96 2.50	623 (835) 500 (671)	671 (900) 552 (740)	714 (957) 631 (846)	2500
MGX-5147 A	1.26, 1.48, 1.75, 1.96 2.50	623 (835) 500 (671)	671 (900) 552 (740)	714 (957) 631 (846)	2500
MGX-5147 RV	1.26, 1.48, 1.75, 1.96 2.50	623 (835) 500 (671)	671 (900) 552 (740)	714 (957) 631 (846)	2500
MGX-516	3.07, 3.50, 4.04, 4.52, 5.05 6.00	397 (532) 365 (489)	447 (600) 406 (544)	465 (624) 425 (570)	2500
MGX-5170 DC	3.12, 3.54, 4.06, 4.50, 5.03, 5.95 6.53, 6.95	475 (637) 415 (557)	537 (720) 459 (615)	578 (775) 499 (669)	2500
MGX-5202 SC	1.17, 1.33, 1.53, 1.76, 2.03 2.48, 2.92, 3.48	540 (724)	600 (805)	678 (909)	2500
MGX-5204 SC	1.17, 1.33, 1.53, 1.76, 2.03, 2.48, 2.92 3.48	633 (849) 540 (724)	716 (960) 600 (805)	797 (1069) 678 (909)	2750 (2500 at 1.17:1)
MGX-5222 DC	4.03, 4.59, 5.04, 6.10, 6.55, 6.96	540 (724)	600 (805)	678 (909)	2500
MGX-5225 DC	4.03, 4.59, 5.04, 5.57, 6.10	644 (864)	727 (975)	787 (1055)	2500
MGX-5321 DC	3.35, 4.06, 4.42, 4.96, 5.46 5.96 6.39	928 (1244) 865 (1160) 776 (1041)	1044 (1400) 970 (1300) 863 (1157)	1069 (1434) 1035 (1388) 967 (1297)	2400

Important – See rating definitions, application information, and torsional compatibility notices on pages 24 and 25.
Ratings shown are in SAE Horsepower (HP). Metric Horsepower equals SAE times 1.014.
Weights are approximate and include flywheel housing adapter and flexible input coupling.

MEDIUM DUTY RATINGS FOR STANDARD &
QUICKSHIFT® MARINE TRANSMISSIONS (Continued)



Model	Ratios	Kilowatts (Horsepower)			Maximum Speed (rpm)
		@ 1200 RPM	@ 1600 RPM	@ 1800 RPM	
MG-540 (with flexible coupling)	1.93, 2.58, 2.90	787 (1055)	1049 (1407)	1180 (1582)	1900
	3.26	869 (1165)	1034 (1387)	1163 (1560)	2100
	3.91	648 (869)	864 (1159)	972 (1303)	2400
	4.10, 4.60	787 (1055)	1049 (1407)	1180 (1582)	1900
	5.17	774 (1038)	1032 (1384)	1161 (1557)	2100
	6.18	644 (864)	859 (1152)	966 (1295)	2400
	7.00	571 (766)	762 (1022)	857 (1149)	2400
	7.47	535 (717)	715 (959)	804 (1078)	2400
MG-5506	4.03, 4.55, 4.96, 5.44	960 (1287)	1281 (1718)	1441 (1932)	2000
	6.00	869 (1165)	1159 (1554)	1304 (1749)	
MGX-5600	2.53, 2.98, 3.51, 4.03, 4.63, 5.04	1230 (1649)	1598 (2143)	1760 (2360)	2100
	5.76	1200 (1609)	1566 (2100)	1737 (2329)	
	6.04	1016 (1362)	1309 (1755)	1451 (1946)	
		@ 1600 RPM	@ 1800 RPM	@ 2100 RPM	
MG-6449 A	1.51, 1.73	680 (912)	741 (994)	833 (1117)	2500
	2.07	565 (758)	617 (827)	695 (932)	
	2.44	494 (662)	537 (720)	602 (807)	
	2.95	435 (583)	489 (656)	570 (764)	
MG-6449 RV	1.51, 1.73	680 (912)	741 (994)	833 (1117)	2500
	2.07	565 (758)	617 (827)	695 (932)	
	2.44	494 (662)	537 (720)	602 (807)	
	2.95	435 (583)	489 (656)	570 (764)	
MGX-6598 DC	2.46, 3.03	759 (1018)	824 (1105)	918 (1231)	2500
	3.48	717 (961)	779 (1045)	868 (1164)	
	3.93	653 (876)	710 (952)	790 (1059)	
	4.43	609 (817)	662 (888)	737 (988)	
MGX-6599 SC	1.07, 1.30, 1.50, 1.66, 1.74, 1.97, 2.04	713 (956)	774 (1038)	862 (1156)	2500
	2.19, 2.45	713 (956)	774 (1038)	862 (1156)	
	2.82	615 (825)	668 (896)	744 (998)	
MGX-6599 A	1.34, 1.51, 1.74, 2.03, 2.24	754 (1011)	820 (1100)	910 (1220)	2500
	2.48	711 (953)	772 (1035)	860 (1153)	
	2.80	654 (877)	709 (951)	790 (1059)	
MGX-6599 RV	1.34, 1.51, 1.74, 2.03, 2.24	754 (1011)	820 (1100)	910 (1220)	2500
	2.48	711 (953)	772 (1035)	860 (1153)	
	2.80	654 (877)	709 (951)	790 (1059)	
MG-6600 DC	3.30, 4.11	884 (1185)	960 (1287)	998 (1338)	2500
	4.68, 4.72	861 (1155)	935 (1254)	998 (1338)	
	5.22	834 (1118)	906 (1215)	998 (1338)	
	6.05	773 (1037)	839 (1125)	935 (1254)	

Important – See rating definitions, application information, and torsional compatibility notices on pages 24 and 25.
Ratings shown are in SAE Horsepower (HP). Metric Horsepower equals SAE times 1.014.
Weights are approximate and include flywheel housing adapter and flexible input coupling.

MEDIUM DUTY RATINGS FOR STANDARD &
QUICKSHIFT® MARINE TRANSMISSIONS (Continued)



Model	Ratios	Kilowatts (horsepower)			Maximum Speed (rpm)
		@ 1600 RPM	@ 1800 RPM	@ 2100 RPM	
MGX-6620 SC	1.15, 1.33, 1.53, 1.73	884 (1185)	960 (1287)	998 (1338)	2500
	2.03, 2.32	861 (1155)	935 (1254)	998 (1338)	
	2.44	834 (1118)	906 (1215)	998 (1338)	
	2.72	773 (1037)	839 (1125)	935 (1254)	
MGX-6620 A	1.55, 1.72, 2.09	926 (1242)	1021 (1369)	1132 (1518)	2500
	2.28, 2.42	868 (1164)	943 (1265)	1050 (1408)	
	2.73	769 (1031)	835 (1120)	930 (1247)	
MGX-6620 RV	1.55	871 (1168)	946 (1269)	1054 (1413)	2500
	1.72	843 (1130)	915 (1227)	1020 (1368)	
	2.09	800 (1073)	869 (1165)	968 (1298)	
	2.28, 2.42	777 (1042)	844 (1132)	940 (1261)	
	2.73	707 (948)	767 (1029)	855 (1147)	
MGX-6650 SC	1.51, 1.88, 2.03, 2.37	928 (1244)	1044 (1400)	1174 (1574)	2300 (1.51-2.03) 2500 (2.37-3.21)
	2.47, 2.93, 3.21				
MGX-6690 SC	1.51, 1.88, 2.03, 2.37, 2.47	1054 (1413)	1174 (1574)	1277 (1712)	2300 (1.51-2.03) 2500 (2.37-3.21)
	2.93	1034 (1387)	1144 (1534)	1209 (1621)	
	3.21	1018 (1365)	1119 (1501)	1194 (1601)	
MGX-6848 SC	1.51, 1.88, 2.03, 2.37, 2.47, 2.58, 2.81, 2.93	1187 (1592)	1342 (1800)	1566 (2100)	2300 (1.51-2.03) 2500 (2.37-3.21)
	3.21	1103 (1479)	1226 (1644)	1404 (1883)	
		@ 1200 RPM	@ 1600 RPM	@ 1800 RPM	
MG-6984 SC	1.18, 1.54, 2.06, 2.29, 2.52, 2.92	902 (1210)	1203 (1613)	1353 (1814)	2100
	3.25	818 (1097)	1090 (1462)	1227 (1645)	
	3.43	616 (826)	821 (1101)	924 (1239)	
MG-6984 A	1.48, 1.97, 2.50, 2.79	923 (1238)	1230 (1649)	1384 (1856)	2100
	2.93	887 (1189)	1182 (1585)	1330 (1784)	
MG-6984 RV	1.48, 1.97, 2.50, 2.79	923 (1238)	1230 (1649)	1384 (1856)	2100
	2.93	887 (1189)	1182 (1585)	1330 (1784)	
MGX-61000 SC	2.22, 2.54, 2.72, 3.03, 3.39	1119 (1500)	1491 (2000)	1678 (2250)	2100
MG-61242 SC	1.16, 1.52, 2.08, 2.47	1315 (1763)	1754 (2352)	1973 (2646)	2100
	2.96	1268 (1700)	1691 (2268)	1902 (2551)	
MG-61242 A	1.42, 2.07, 2.44	1315 (1763)	1754 (2352)	1973 (2646)	2100
	2.93	1263 (1694)	1685 (2260)	1896 (2543)	
MG-61242 RV	1.42, 2.07, 2.44	1315 (1763)	1754 (2352)	1973 (2646)	2100
	2.93	1263 (1694)	1685 (2260)	1896 (2543)	
MGX-61500 SC	1.84, 1.98, 2.45, 2.56, 2.86, 2.97	1560 (2092)	2080 (2789)	2340 (3138)	2100
	3.03, 3.41	1333 (1788)	1778 (2384)	2000 (2682)	
For Waterjet propulsion only		@ 1600 RPM	@ 1800 RPM	@ 2100 RPM	
MGX-61500 SC-HL	1.84, 1.98, 2.18, 2.26, 2.56, 2.97 *	2079 (2788)	2339 (3137)	2729 (3660)	2100
MGX-61500 SC-HR					
MGX-62000 SC-HL	1.84, 1.98, 2.18, 2.56, 2.97 *	2248 (3014)	2529 (3391)	2950 (3956)	2100
MGX-62000 SC-HL					

*additional ratios will be
made available upon request

Important - See rating definitions, application information, and torsional compatibility notices on pages 24 and 25.
Ratings shown are in SAE Horsepower (HP). Metric Horsepower equals SAE times 1.014.
Weights are approximate and include flywheel housing adapter and flexible input coupling.

Model	Ratios	Kilowatts (Horsepower)			Maximum Speed (rpm)
		@ 1800 RPM	@ 2100 RPM	@ 2300 RPM	
MG-340	1.45	18 (24)	21 (28)	23 (31)	4500
	2.00	13 (17)	15 (20)	16 (21)	
	2.60	9 (12)	11 (15)	12 (16)	
MG-360	1.55	23 (31)	26 (35)	29 (39)	5000
	2.00	21 (28)	24 (32)	26 (35)	
	2.45	17 (23)	20 (27)	21 (28)	
	2.83	14 (19)	16 (22)	17 (23)	
MG-5005 A	1.54, 2.00	35 (47)	41 (55)	45 (60)	4500
	2.47	26 (35)	30 (40)	33 (44)	
MG-5012 SC	1.51	74 (99)	86 (115)	94 (126)	4500
	2.09	64 (86)	75 (100)	82 (110)	
	2.40	58 (77)	67 (90)	74 (99)	
	2.77	50 (67)	58 (78)	64 (86)	
MG-5020 SC	1.50, 2.04	104 (139)	121 (162)	133 (178)	4000
	2.50	83 (111)	97 (130)	106 (142)	
	2.94	72 (96)	84 (112)	92 (123)	
MG-5025 A	1.52, 2.09	59 (79)	69 (93)	75 (101)	4500
	2.40	52 (70)	61 (82)	67 (90)	
MG-5055 A	1.53, 2.08	105 (141)	123 (165)	135 (181)	4000
	2.60	60 (82)	70 (95)	77 (103)	
MG-5050 SC	1.00, 1.23, 1.53, 1.71, 2.04, 2.45	104 (139)	116 (156)	127 (170)	3300
	3.00	93 (125)	108 (145)	121 (162)	
MG-5050 A	1.12, 1.26, 1.50, 1.80, 2.04, 2.50	104 (139)	116 (156)	127 (170)	3300
MG-5050 RV	1.12, 1.26, 1.50, 1.80, 2.04, 2.50	104 (139)	116 (156)	127 (170)	3300
MG-5061 SC	1.15, 1.48, 1.77, 2.00, 2.43	123 (165)	142 (190)	155 (208)	3300
	3.00	115 (154)	133 (178)	145 (194)	
MG-5061 A	1.13, 1.28, 1.54, 1.75, 2.00	123 (165)	142 (190)	155 (208)	3300
	2.47	115 (154)	133 (178)	145 (194)	
MG-5061 RV	1.13, 1.28, 1.54, 1.75, 2.00	123 (165)	142 (190)	155 (208)	3300
	2.47	115 (154)	133 (178)	145 (194)	
MG-5062 IV	1.19, 1.53, 1.83, 2.07, 2.51	123 (165)	142 (190)	155 (208)	3300
MGX-5065 SC	1.08, 1.26, 1.47, 1.72, 2.04	216 (290)	250 (335)	272 (365)	3600
MG-5065 SC	2.43	199 (267)	232 (311)	254 (341)	
MGX-5065 A	1.08, 1.26, 1.47, 1.72, 2.04	216 (290)	250 (335)	272 (365)	3600
MG-5065 A	2.43	199 (267)	232 (311)	254 (341)	
MGX-5075 SC	1.06, 1.22, 1.33, 1.53, 1.77, 2.05	186 (249)	209 (280)	224 (300)	3500
MG-5075 SC	2.53, 2.88				
MGX-5075 A	1.06, 1.22, 1.33, 1.53, 1.77, 2.05	186 (249)	209 (280)	224 (300)	3500
MG-5075 A	2.53, 2.88				
MGX-5075 IV	1.03, 1.30, 1.49, 1.72, 1.99, 2.46	186 (249)	209 (280)	224 (300)	3500
MG-5075 IV					
MG-5085 SC	1.05, 1.22, 1.42, 1.76, 1.96	227 (304)	254 (340)	265 (355)	3200
	2.33	205 (275)	231 (310)	243 (326)	
MG-5085 A	1.05, 1.22, 1.47, 1.72, 2.04	227 (304)	254 (340)	265 (355)	3200
	2.43	205 (275)	231 (310)	243 (326)	

Important – See rating definitions, application information, and torsional compatibility notices on pages 24 and 25.

Ratings shown are in SAE Horsepower (HP). Metric Horsepower equals SAE times 1.014.

Weights are approximate and include flywheel housing adapter and flexible input coupling.

CONTINUOUS DUTY RATINGS FOR STANDARD &
QUICKSHIFT® MARINE TRANSMISSIONS (Continued)



Model	Ratios	Kilowatts (Horsepower)			Maximum Speed (rpm)
		@ 1800 RPM	@ 2100 RPM	@ 2300 RPM	
MG-5082 SC	1.06, 1.11, 1.33, 1.53, 1.77, 2.05, 2.28, 2.53, 2.88	262 (351)	292 (392)	310 (416)	3200
MG-5082 A	1.06, 1.11, 1.33, 1.53, 1.77, 2.05, 2.28, 2.53, 2.88	262 (351)	292 (392)	310 (416)	3200
MGX-5086 SC	1.06, 1.11, 1.33, 1.53, 1.77, 2.05, 2.28, 2.53, 2.88	262 (351)	292 (392)	310 (416)	3200
MGX-5086 A	1.06, 1.11, 1.33, 1.53, 1.77, 2.05, 2.28, 2.53, 2.88	262 (351)	292 (392)	310 (416)	3200
MG-5091 SC	1.17, 1.45, 1.71, 2.04, 2.45, 2.95 3.33	242 (325) 205 (275)	280 (375) 239 (320)	306 (410) 261 (350)	3000
MG-5091 DC	3.82, 4.50 5.05	242 (325) 205 (275)	280 (375) 239 (320)	306 (410) 261 (350)	3000
MG-5090 A	1.45, 1.73, 1.96, 2.43	239 (320)	276 (370)	287 (385)	3000
MGX-5095 SC	1.15, 1.27, 1.47, 1.71, 2.00, 2.46	298 (400)	335 (449)	360 (483)	3000
MG-5095 SC	2.95				
MGX-5095 A	1.28, 1.52, 1.81, 2.04	298 (400)	335 (449)	360 (483)	3000
MG-5095 A	2.48				
MGX-5096A	1.28, 1.52, 1.81, 2.04, 2.48	298 (400)	335 (449)	360 (483)	3000
MGX-5114 SC	0.93, 1.02, 1.12, 1.50, 1.74, 2.04, 2.54	358 (480)	410 (550)	444 (595)	2800 at .93:1 3000 for others
MG-5114 SC	3.00	328 (440)	373 (500)	403 (540)	
MGX-5114 SC-HD	1.50, 1.74, 2.04, 2.54	358 (480)	410 (550)	444 (595)	3000
MG-5114 SC-HD	3.00	328 (440)	373 (500)	403 (540)	
MGX-5114 DC	3.28, 3.43, 4.17, 4.59, 4.86	347 (465)	403 (540)	421 (565)	3000
MG-5114 DC					
MGX-5114 A	1.03, 1.20, 1.48, 1.75, 1.92, 2.04	347 (465)	387 (519)	418 (561)	3000
MG-5114 A	2.50	321 (430)	366 (491)	396 (531)	
MGX-5114 RV	1.03, 1.20, 1.48, 1.75, 1.92, 2.04	347 (465)	387 (519)	418 (561)	3000
MG-5114 RV	2.50	321 (430)	366 (491)	396 (531)	
MGX-5114 IV	1.05, 1.23, 1.52, 1.80, 1.98	347 (465)	387 (519)	418 (561)	3000
MG-5114 IV	2.57	321 (430)	366 (491)	396 (531)	
MGX-5126A	1.03, 1.20, 1.48, 1.75, 2.04 2.50	347 (465) 321 (430)	387 (519) 366 (491)	418 (561) 396 (531)	3000
		@ 1600 RPM	@ 1800 RPM	@ 2100 RPM	
MGX-5135 SC	1.00, 1.10, 1.28, 1.48, 1.73, 2.04, 2.57	410 (550)	445 (597)	497 (666)	2800
MG-5135 SC	2.90	376 (504)	408 (547)	456 (611)	
MGX-5135 A	1.16, 1.25, 1.53, 1.79, 2.00	410 (550)	445 (597)	497 (666)	2800
MG-5135 A	2.52				
MGX-5135 RV	1.16, 1.25, 1.53, 1.79, 2.00	410 (550)	445 (597)	497 (666)	2800
MG-5135 RV	2.52				

Important – See rating definitions, application information, and torsional compatibility notices on pages 24 and 25.
Ratings shown are in SAE Horsepower (HP). Metric Horsepower equals SAE times 1.014.
Weights are approximate and include flywheel housing adapter and flexible input coupling.

CONTINUOUS DUTY RATINGS FOR STANDARD &
QUICKSHIFT® MARINE TRANSMISSIONS (Continued)



Model	Ratios	Kilowatts (Horsepower)			Maximum Speed (rpm)
		@ 1600 RPM	@ 1800 RPM	@ 2100 RPM	
MGX-5136 SC	1.00, 1.10, 1.28, 1.48, 1.73, 2.04, 2.57 2.90	410 (550) 376 (504)	445 (597) 408 (547)	497 (666) 456 (611)	2800
MGX-5136 A	1.16, 1.25, 1.53, 1.79, 2.00, 2.52	410 (550)	445 (597)	497 (666)	2800
MGX-5136 RV	1.16, 1.25, 1.53, 1.79, 2.00, 2.52	410 (550)	445 (597)	497 (666)	2800
MGX-5145 SC	1.03, 1.20, 1.33, 1.48, 1.75, 1.96 2.50	510 (684) 438 (587)	552 (740) 485 (650)	596 (799) 555 (744)	2500
MGX-5145 A	1.26, 1.48, 1.75, 1.96	510 (684)	552 (740)	596 (799)	2500
MG-5145 A	2.50	438 (587)	485 (650)	555 (744)	
MGX-5145 RV	1.26, 1.48, 1.75, 1.96	510 (684)	552 (740)	596 (799)	2500
MG-5145 RV	2.50	438 (587)	485 (650)	555 (744)	
MGX-5146 SC	1.20, 1.33, 1.48, 1.57, 1.75, 1.96 2.50	565 (758) 481 (645)	612 (821) 537 (720)	660 (885) 615 (825)	2500
MGX-5146 A	1.26, 1.48, 1.75, 1.96 2.50	565 (758) 481 (645)	612 (821) 537 (720)	660 (885) 615 (825)	2500
MGX-5146 RV	1.26, 1.48, 1.75, 1.96 2.50	565 (758) 481 (645)	612 (821) 537 (720)	660 (885) 615 (825)	2500
MGX-5147 SC	1.20, 1.33, 1.48, 1.57, 1.75, 1.96 2.50	565 (758) 481 (645)	612 (821) 537 (720)	660 (885) 615 (825)	2500
MGX-5147 A	1.26, 1.48, 1.75, 1.96 2.50	565 (758) 481 (645)	612 (821) 537 (720)	660 (885) 615 (825)	2500
MGX-5147 RV	1.26, 1.48, 1.75, 1.96 2.50	565 (758) 481 (645)	612 (821) 537 (720)	660 (885) 615 (825)	2500
MGX-516	3.07, 3.50, 4.04, 4.52, 5.05 6.00	397 (532) 365 (489)	447 (600) 406 (544)	465 (624) 425 (570)	2500
MGX-5170 DC	3.12, 3.54, 4.06, 4.50, 5.03, 5.95 6.53, 6.95	448 (601) 408 (547)	507 (680) 459 (615)	541 (725) 478 (641)	2500
MGX-5202 SC	1.17, 1.33, 1.53, 1.76, 2.03, 2.48, 2.92 3.48	540 (724)	600 (805)	678 (909)	2500
MGX-5204 SC	1.17, 1.33, 1.53, 1.76, 2.03, 2.48, 2.92 3.48	633 (849) 540 (724)	716 (960) 600 (805)	797 (1069) 678 (909)	2750 (2500 at 1.17:1)
MGX-5222 DC	4.03, 4.59, 5.04, 6.10, 6.55, 6.96	540 (724)	600 (805)	678 (909)	2500
MGX-5225 DC	4.03, 4.59, 5.04, 5.57, 6.10	633 (849)	716 (960)	735 (986)	2500
MGX-5321 DC	3.35, 4.06, 4.42, 4.96, 5.46 5.96 6.39	882 (1183) 861 (1155) 737 (988)	982 (1317) 970 (1300) 812 (1089)	1000 (1341) 968 (1298) 905 (1214)	2400

Important – See rating definitions, application information, and torsional compatibility notices on pages 24 and 25.
Ratings shown are in SAE Horsepower (HP). Metric Horsepower equals SAE times 1.014.
Weights are approximate and include flywheel housing adapter and flexible input coupling.

CONTINUOUS DUTY RATINGS FOR STANDARD &
QUICKSHIFT® MARINE TRANSMISSIONS (Continued)



Model	Ratios	Kilowatts (Horsepower)			Maximum Speed (rpm)
		@ 1200 RPM	@ 1600 RPM	@ 1800 RPM	
MG-540 (with flexible coupling)	1.93, 2.58, 2.90	787 (1055)	1049 (1407)	1180 (1582)	1900
	3.26	776 (1041)	1034 (1387)	1163 (1560)	2100
	3.91	648 (869)	864 (1159)	972 (1303)	2400
	4.60	787 (1055)	1049 (1407)	1180 (1582)	1900
	5.17	774 (1038)	1032 (1384)	1161 (1557)	2100
	6.18	644 (864)	859 (1152)	969 (1300)	2400
	7.00	571 (766)	762 (1022)	895 (1200)	2400
	7.47	535 (717)	715 (959)	804 (1078)	2400
MG-5506	4.03, 4.55, 4.96, 5.44	937 (1257)	1249 (1675)	1406 (1885)	2000
	6.00	848 (1137)	1130 (1515)	1279 (1715)	
MGX-5600	2.53, 2.98, 3.51, 4.03, 4.63, 5.04	1230 (1649)	1575 (2112)	1760 (2360)	2100
	5.76	1200 (1609)	1566 (2100)	1737 (2329)	
	6.04	985 (1321)	1271 (1704)	1410 (1891)	
MGX-5600DR	4.20, 6.02	1151 (1543)	1564 (2097)	1760 (2360)	2100
	6.56	1038 (1392)	1458 (1955)	1641 (2201)	
	7.01	964 (1293)	1352 (1813)	1566 (2100)	
	7.22	845 (1133)	1088 (1459)	1207 (1619)	
MGN-1814 V	2.53, 3.00, 3.29	1548 (2076)	2064 (2768)	2322 (3114)	1800
	3.62, 4.00				
MGN-1816 V	4.43, 4.85	1548 (2076)	2064 (2768)	2322 (3114)	1800
	5.33, 5.61				
MGN-1817 V	6.00, 6.56, 6.88	1548 (2076)	2064 (2768)	2322 (3114)	1800
	7.22, 7.59				
MGN-1819 V	8.88	1500 (2012)	2000 (2682)	2250 (3017)	1800
		@ 1600 RPM	@ 1800 RPM	@ 2100 RPM	
MG-6449 A	1.51, 1.73	640 (858)	695 (932)	778 (1043)	2500
	2.07	529 (709)	574 (770)	642 (861)	
	2.44	462 (620)	502 (673)	562 (754)	
	2.95	413 (554)	448 (601)	501 (672)	
MG-6449 RV	1.51, 1.73	640 (858)	695 (932)	778 (1043)	2500
	2.07	529 (709)	574 (770)	642 (861)	
	2.44	462 (620)	502 (673)	562 (754)	
	2.95	413 (554)	448 (601)	501 (672)	

Important – See rating definitions, application information, and torsional compatibility notices on pages 24 and 25.
Ratings shown are in SAE Horsepower (HP). Metric Horsepower equals SAE times 1.014.
Weights are approximate and include flywheel housing adapter and flexible input coupling.

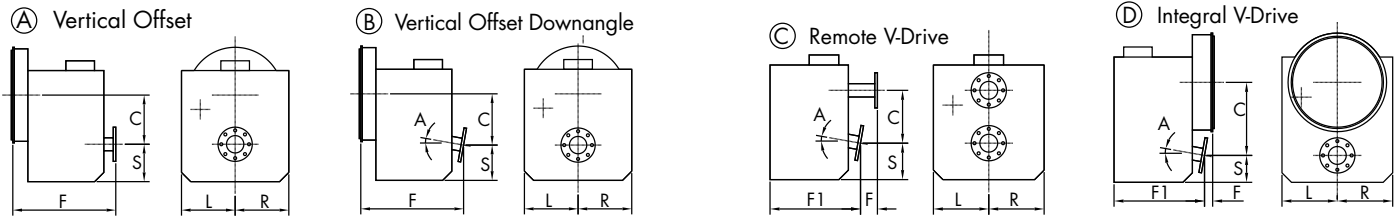
CONTINUOUS DUTY RATINGS FOR STANDARD &
QUICKSHIFT® MARINE TRANSMISSIONS (Continued)



Model	Ratios	Kilowatts (Horsepower)			Maximum Speed (rpm)
		@ 1600 RPM	@ 1800 RPM	@ 2100 RPM	
MGX-6598 DC	2.46, 3.03	710 (952)	771 (1034)	858 (1151)	2500
	3.48	670 (898)	729 (978)	811 (1088)	
	3.93	611 (819)	664 (890)	739 (991)	
	4.43	570 (764)	619 (830)	690 (925)	
MGX-6599 SC	1.07, 1.30, 1.50, 1.66, 1.74	685 (919)	744 (998)	828 (1110)	2500
	1.97, 2.04, 2.19, 2.45	670 (898)	728 (976)	806 (1081)	
	2.82	575 (771)	624 (837)	696 (933)	
MGX-6599 A	1.34, 1.51, 1.74, 2.03, 2.24	706 (947)	767 (1029)	851 (1141)	2500
	2.48	668 (896)	728 (976)	804 (1078)	
	2.80	644 (864)	699 (937)	779 (1045)	
MGX-6599 RV	1.34, 1.51, 1.74, 2.03, 2.24	706 (947)	767 (1029)	851 (1141)	2500
	2.48	668 (896)	728 (976)	804 (1078)	
	2.80	644 (864)	699 (937)	779 (1045)	
MG-6600 DC	3.30, 4.11	637 (854)	716 (960)	835 (1120)	2500
	4.68, 4.72	623 (835)	701 (940)	818 (1097)	
	5.22	534 (716)	600 (805)	699 (937)	
	6.05	473 (634)	532 (713)	621 (833)	
MGX-6620 SC	1.15, 1.33, 1.53, 1.73	827 (1109)	898 (1204)	934 (1252)	2500
	2.03	810 (1086)	879 (1179)	934 (1252)	
	2.32	805 (1080)	874 (1172)	934 (1252)	
	2.44	780 (1046)	847 (1136)	934 (1252)	
	2.72	723 (970)	785 (1053)	875 (1173)	
MGX-6620 A	1.55, 1.72, 2.09	875 (1173)	950 (1274)	1059 (1420)	2500
	2.28, 2.42	767 (1029)	833 (1117)	928 (1244)	
	2.73	719 (964)	780 (1046)	869 (1165)	
MGX-6620 RV	1.55	815 (1093)	885 (1187)	986 (1322)	2500
	1.72	788 (1057)	856 (1148)	954 (1279)	
	2.09	749 (1004)	813 (1090)	905 (1214)	
	2.28, 2.42	727 (975)	789 (1058)	879 (1179)	
	2.73	661 (886)	718 (963)	799 (1071)	
MGX-6650 SC	1.51, 1.88, 2.03, 2.37	911 (1222)	1025 (1375)	1098 (1472)	2300 (1.51-2.03) 2500 (2.37-3.21)
	2.47, 2.93, 3.21				
MGX-6690 SC	1.51, 1.88, 2.03, 2.37, 2.47	1017 (1364)	1129 (1514)	1195 (1602)	2300 (1.51-2.03) 2500 (2.37-3.21)
	2.93	977 (1310)	1069 (1434)	1130 (1515)	
	3.21	943 (1265)	1028 (1379)	1098 (1472)	
MGX-6848 SC	1.51, 1.88, 2.03, 2.37, 2.47, 2.58, 2.81, 2.93	1111 (1490)	1250 (1676)	1420 (1904)	2300 (1.51-2.03) 2500 (2.37-3.21)
	3.21	1074 (1440)	1194 (1601)	1350 (1810)	
		@ 1200 RPM	@ 1600 RPM	@ 1800 RPM	
MG-6984 SC	1.18, 1.54, 2.06, 2.29, 2.52, 2.92	884 (1185)	1178 (1580)	1326 (1778)	2100
	3.25	800 (1073)	1066 (1430)	1200 (1609)	
	3.43	602 (807)	802 (1075)	903 (1211)	
MG-6984 A	1.48, 1.97, 2.50, 2.79	905 (1214)	1206 (1617)	1356 (1818)	2100
	2.93	867 (1163)	1157 (1552)	1301 (1745)	
MGX-61000 SC	2.22, 2.54, 2.63, 2.72, 3.03, 3.39	Please contact Twin Disc			2100
MG-61242 SC	1.16, 1.52	1250 (1676)	1667 (2235)	1875 (2514)	2100
	2.08, 2.47, 2.96	1173 (1573)	1512 (2028)	1760 (2360)	
MG-61242 A	1.42, 2.07	1239 (1661)	1651 (2214)	1858 (2492)	2100
	2.44	1189 (1594)	1585 (2125)	1782 (2390)	
	2.93	1173 (1573)	1565 (2099)	1760 (2360)	
MGX-61500 SC	1.84, 1.98, 2.26, 2.39, 2.45	Please contact Twin Disc			2100
	2.56, 2.86, 2.97, 3.03, 3.41				

Important - See rating definitions, application information, and torsional compatibility notices on pages 24 and 25.
Ratings shown are in SAE Horsepower (HP). Metric Horsepower equals SAE times 1.014.
Weights are approximate and include flywheel housing adapter and flexible input coupling.

DIMENSIONS AND WEIGHTS FOR TWIN DISC MARINE TRANSMISSIONS



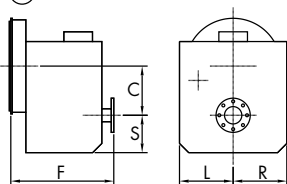
Model	Assembly Drawing	Installation Drawing Series	Config.	SAE Housing	A (deg.)	C (offset) in (mm)	S (sump) in (mm)	F (length) in (mm)	F1 (length) in (mm)	L (mounting pad) in (mm)	R (mounting pad) in (mm)	Weight lb (kg)
MG-340	IT101317501	IT40TD0004	A	5, BW	—	2.66 (68)	2.46 (63)	7.17 (182)	—	—	2.95 (75)	20 (9)
MG-360	IT101319505	IT60TD0004	A	5, BW	—	3.10 (79)	3.56 (83)	9.65 (245)	—	—	—	31 (14)
MG-5005 A	IT345ATD0001	IT1023041	B	3, 4, 5	8°	4.37 (111)	3.19 (81)	8.82 (224)	—	—	—	55 (25)
MG-5012 SC	IT1013079B01	IT93TD0001	A	3, 4, BW	—	4.35 (110)	4.92 (125)	10.14 (258)	—	6.61 (168)	6.61 (168)	117 (53)
MG-5020 SC	IT1013049B01	IT170TD0001	A	3, 4, BW	—	5.18 (132)	5.17 (131)	10.53 (268)	—	7.60 (193)	7.60 (193)	165 (75)
MG-5025 A	IT1013170	IT485ATD0000	B	3, 4, BW	8°	4.96 (126)	3.43 (87)	10.63 (270)	—	6.50 (165)	6.50 (165)	79 (36)
MG-5055 A	IT101316101	IT880ATD0002	B	3, 4, BW	10°	6.10 (155)	4.25 (108)	10.51 (267)	—	7.60 (193)	7.60 (193)	119 (54)
MG-5050 SC	PX-12700	PX-13021	A	1, 2, 3, 4	—	5.28 (134)	4.69 (119)	12.78 (325)	—	8.13 (207)	5.85 (149)	189 (86)
MG-5050 A	PX-12730	PX-13019	B	1, 2, 3, 4	10°	5.52 (140)	3.68 (93)	12.10 (307)	—	8.13 (207)	5.85 (149)	176 (80)
MG-5050 RV	PX-8760	PX-8760	C	—	10°	5.52 (140)	3.68 (93)	3.06 (78)	10.13 (257)	8.13 (207)	5.85 (149)	160 (73)
MG-5061 SC	PX-11650/-A	1026328	A	1, 2, 3	—	5.66 (144)	4.84 (123)	13.18 (335)	—	8.40 (213)	6.15 (156)	215 (98)
MG-5061 A	PX-11640/-A	1026225	B	1, 2, 3	7°	5.75 (146)	4.21 (107)	12.53 (318)	—	8.40 (213)	6.16 (156)	210 (95)
MG-5061 RV	PX-8735	PX-8735	C	—	7°	5.75 (146)	4.21 (107)	2.79 (71)	10.53 (267)	8.40 (213)	6.16 (156)	190 (86)
MG-5062 IV	PX-11660/-A	PX-11660/-A	D	1, 2, 3	15°	13.03 (331)	3.97 (101)	4.00 (102)	12.92 (328)	8.40 (213)	6.15 (156)	312 (142)
MGX-5065 SC	PX-12410-A	1026371	A	1, 2, 3	—	6.00 (152)	5.22 (133)	13.30 (338)	—	10.00 (254)	6.50 (165)	244 (111)
MGX-5065 A	PX-12370-A	1026215	B	1, 2, 3	7°	6.69 (170)	4.84 (123)	12.97 (329)	—	10.00 (254)	6.50 (165)	244 (111)
MG-5065 SC	PX-11480-A	1026372-A	A	1, 2, 3	—	6.00 (152)	5.22 (133)	13.30 (338)	—	10.00 (254)	6.50 (165)	244 (111)
MG-5065 A	PX-11165-B	1026552	B	1, 2, 3	7°	6.69 (170)	4.84 (123)	12.97 (329)	—	10.00 (254)	6.50 (165)	244 (111)
MGX-5075 SC	PX-12620	PX-13174	A	1, 2, 3	—	0.59 (15)	7.00 (178)	14.11 (358)	—	10.00 (254)	10.00 (254)	268 (122)
MGX-5075 A	PX-12610	PX-12610	B	1, 2, 3	7°	1.91 (48)	7.00 (178)	13.80 (350)	—	10.00 (254)	10.00 (254)	268 (122)
MGX-5075 IV	PX-12630	1026838	D	1, 2, 3	15°	14.70 (373)	3.93 (100)	2.81 (71)	13.94 (354)	10.00 (254)	10.00 (254)	330 (150)
MG-5075 SC	PX-11876 & PX-11876	1026311	A	1, 2, 3	—	0.59 (15)	7.00 (178)	14.11 (358)	—	10.00 (254)	10.00 (254)	268 (122)
MG-5075 SC	PX-10680/-A	PX-10680/-A	A	1, 2, 3	—	0.59 (15)	7.00 (178)	14.11 (358)	—	10.00 (254)	10.00 (254)	268 (122)
MG-5075 A	PX-10700/-A	1026876	B	1, 2, 3	7°	1.91 (48)	7.00 (178)	13.80 (350)	—	10.00 (254)	10.00 (254)	268 (122)
MG-5075 IV	PX-11530A	PX-13054	D	1, 2, 3	15°	14.70 (373)	3.93 (100)	2.81 (71)	13.94 (354)	10.00 (254)	10.00 (254)	330 (150)
MG-5082 SC	PX-11250-A	PX-11250-A	A	1, 2	—	0.59 (15)	7.00 (178)	16.24 (413)	—	10.00 (254)	10.00 (254)	298 (135)
MG-5082 A	PX-11040-B	PX-11040-B	B	1, 2	7°	2.12 (54)	7.00 (178)	15.97 (405)	—	10.00 (254)	10.00 (254)	298 (135)
MG-5085 SC	PX-9260-B/-C	PX-9260-B/-C	A	1, 2, 3	—	6.00 (152)	5.25 (133)	14.67 (373)	—	10.00 (254)	6.50 (165)	265 (120)
MG-5085 A	PX-9360-B/-C	PX-13370	B	1, 2, 3	7°	6.69 (170)	4.84 (123)	14.69 (373)	—	10.00 (254)	6.50 (165)	270 (123)
MGX-5086 SC	PX-12600	PX-12600	A	1, 2	—	0.59 (15)	7.00 (178)	16.24 (413)	—	10.00 (254)	10.00 (254)	298 (135)
MGX-5086 A	PX-12290	PX-13064	B	1, 2	7°	2.12 (54)	7.00 (178)	15.97 (405)	—	10.00 (254)	10.00 (254)	298 (135)
MG-5091 SC	PX-10016	1026295	A	1, 2	—	6.82 (173)	6.22 (158)	16.59 (421)	—	10.25 (260)	6.94 (174)	485 (220)
MG-5091 DC	1002155/ PX-12636 (FS)	1026877/ PX-12636 (FS)	A	1, 2	—	9.49 (241)	9.60 (244)	18.09 (459)	—	11.12 (282)	11.12 (282)	655 (297)
MG-5090 A	PX-10015	PX-13290	B	1, 2	7°	7.30 (185)	5.05 (128)	17.07 (434)	—	10.25 (260)	7.00 (178)	475 (215)
MGX-5095 SC	PX-12480	PX-13023	A	1, 2	—	7.48 (190)	6.14 (156)	17.00 (432)	—	10.43 (265)	10.43 (265)	419 (190)
MGX-5095 A	PX-12360	PX-13022	B	1, 2	7	7.43 (189)	5.54 (141)	17.00 (432)	—	10.43 (265)	10.43 (265)	407 (185)
MG-5095 SC	PX-11535	PX-13215	A	1, 2	—	7.48 (190)	6.14 (156)	17.00 (432)	—	10.43 (265)	10.43 (265)	419 (190)
MG-5095 A	PX-11495	PX-11495	B	1, 2	7	7.43 (189)	5.54 (141)	17.00 (432)	—	10.43 (265)	10.43 (265)	407 (185)

Dimensions may vary with housing adapter or output flange.

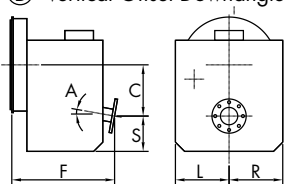
Use certified drawings for installation.
Dry weights are approximate and vary by input and ratio.
Specifications are subject to change without notice.

DIMENSIONS AND WEIGHTS FOR TWIN DISC MARINE TRANSMISSIONS

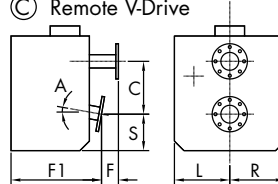
Ⓐ Vertical Offset



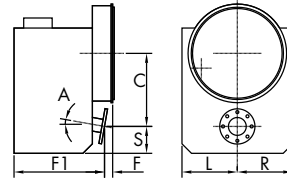
Ⓑ Vertical Offset Downangle



Ⓒ Remote V-Drive



Ⓓ Integral V-Drive



Model	Assembly Drawing	Installation Drawing Series	Config.	SAE Housing	A (deg.)	C (offset) in (mm)	S (sump) in (mm)	F (length) in (mm)	F1 (length) in (mm)	L (mounting pad) in (mm)	R (mounting pad) in (mm)	Weight lb (kg)
MGX-5096A	PX12680A	PX12820	B	1, 2	7	7.51 (191)	5.45 (139)	19.76 (502)	—	10.43 (265)	10.43 (265)	443 (201)
MG-5096A	PX13225	PX13226	B	1, 2	7	7.51 (191)	5.45 (139)	19.76 (502)	—	10.43 (265)	10.43 (265)	443 (201)
MGX-5114 SC	PX-12490	PX-13025	A	1	—	7.47 (190)	6.33 (161)	19.00 (483)	—	11.00 (279)	7.50 (191)	447 (203)
MGX-5114 SC-HD	PX-12860	PX-13252	A	1	—	7.47 (190)	6.33 (161)	19.00 (483)	—	11.00 (279)	11.00 (279)	595 (270)
MGX-5114 DC	PX-12170	PX-13144	A	1	—	10.90 (277)	9.85 (250)	19.03 (483)	—	11.25 (286)	11.25 (286)	793 (360)
MGX-5114 A	1024390	PX-13024	B	1, 2	7	8.00 (203)	5.30 (135)	18.80 (479)	—	11.00 (279)	8.00 (203)	455 (206)
MGX-5114 RV	PX-13270	PX-13365	C	—	7	8.00 (203)	5.25 (133)	2.12 (54)	17.69 (449)	11.00 (279)	8.00 (203)	435 (198)
MGX-5114 IV	PX-12510	1025008	D	1, 2	14	16.26 (413)	5.75 (146)	2.43 (62)	19.26 (489)	7.50 (191)	11.50 (292)	595 (270)
MG-5114 SC	PX-13150	PX-13253	A	1	—	7.47 (190)	6.33 (161)	19.00 (483)	—	11.00 (279)	7.50 (191)	447 (203)
MG-5114 SC-HD	PX-13155	PX-13251	A	1, Ind.	—	7.47 (190)	6.33 (161)	19.00 (483)	—	11.00 (279)	11.00 (279)	595 (270)
MG-5114 DC	PX-10250-A/ PX-12195 (FS)	PX-10250-A/ PX-12195 (FS)	A	1, Ind.	—	10.90 (277)	9.85 (250)	19.03 (483)	—	11.25 (286)	11.25 (286)	800 (364)
MG-5114 A	1024125	1026762	B	1, 2	7	8.00 (203)	5.30 (133)	18.80 (479)	—	11.00 (279)	8.00 (203)	455 (206)
MG-5114 RV	PX-13280	PX-13366	C	—	7	8.00 (203)	5.25 (133)	2.12 (54)	17.69 (449)	11.00 (279)	8.00 (203)	435 (198)
MG-5114 IV	PX-11920	PX-11920	D	1, 2	14	16.26 (413)	5.75 (146)	2.43 (62)	19.26 (489)	7.50 (191)	11.50 (292)	595 (270)
MGX-5126 A	PX12870	1026597	B	1	7	8.11 (206)	5.13 (130)	21.53 (547)	—	11.00 (279)	8.00 (203)	489 (222)
MG-5126 A	PX13235	PX13236	B	1	7	8.11 (206)	5.13 (130)	21.53 (547)	—	11.00 (279)	8.00 (203)	489 (222)
MGX-5135 SC	PX-12450/ PX-12590 (FS)	1026089	A	1, 0	—	7.87 (200)	7.48 (190)	21.06 (535)	—	12.01 (305)	12.01 (305)	625 (284)
MGX-5135 A	PX-12380	1025702	B	1, 0	10	9.09 (231)	6.28 (160)	20.48 (520)	—	12.01 (305)	12.01 (305)	617 (280)
MGX-5135 RV	PX-12520	PX-13143	C	—	10	9.09 (231)	6.28 (160)	4.55 (116)	22.91 (582)	12.01 (305)	12.01 (305)	568 (258)
MG-5135 SC	PX-11590	PX-11590	A	1, 0	—	7.87 (200)	7.48 (190)	21.06 (535)	—	12.01 (305)	12.01 (305)	625 (284)
MG-5135 A	PX-11380	PX-11380	B	1, 0	10	9.09 (231)	6.28 (160)	20.48 (520)	—	12.01 (305)	12.01 (305)	617 (280)
MG-5135 RV	PX-11945	PX-11945	C	—	10	9.09 (231)	6.28 (160)	4.55 (116)	22.91 (582)	12.01 (305)	12.01 (305)	568 (258)
MGX-5136SC	1027445	1027608	A	1, 0	—	7.87 (200)	7.48 (190)	22.52 (572)	—	12.01 (305)	12.01 (305)	659 (299)
MGX-5136A	1025600	1027607	B	1, 0	10	9.12 (232)	6.26 (159)	21.93 (557)	—	12.01 (305)	12.01 (305)	650 (295)
MGX-5136RV	1027556	1027609	C	—	10	9.12 (232)	6.26 (159)	4.46 (113)	18.02 (458)	12.01 (305)	12.01 (305)	608 (276)
MG-5136SC	1027560	1027762	A	1, 0	—	7.87 (200)	7.48 (190)	22.52 (572)	—	12.01 (305)	12.01 (305)	659 (299)
MG-5136A	1027557	1027761	B	1, 0	10	9.12 (232)	6.26 (159)	21.93 (557)	—	12.01 (305)	12.01 (305)	650 (295)
MG-5136RV	1027561	1027763	C	—	10	9.12 (232)	6.26 (159)	4.46 (113)	18.02 (458)	12.01 (305)	12.01 (305)	608 (276)
MGX-5145 SC	PX-12460	1026327	A	1, 0	—	8.12 (206)	7.04 (179)	21.05 (535)	—	12.01 (305)	12.01 (305)	716 (325)
MGX-5145 A	PX-12420	1025920	B	1, 0	10	10.40 (264)	6.13 (156)	20.33 (516)	—	12.01 (305)	12.01 (305)	734 (333)
MGX-5145 RV	PX-12530	PX-13299	C	—	10	10.40 (264)	6.13 (156)	5.77 (147)	18.06 (459)	12.01 (305)	12.01 (305)	650 (295)
MG-5145 SC	PX-10885	PX-13145	A	1, 0	—	8.12 (206)	7.04 (179)	21.05 (535)	—	12.01 (305)	12.01 (305)	716 (325)
MG-5145 A	PX-10830	PX-10830	B	1, 0	10	10.40 (264)	6.13 (156)	20.33 (516)	—	12.01 (305)	12.01 (305)	734 (333)
MG-5145 RV	PX-10880	PX-10880	C	—	10	10.40 (264)	6.13 (156)	5.77 (147)	18.06 (459)	12.01 (305)	12.01 (305)	650 (295)
MGX-5146SC	1027661	1027662	A	1, 0	—	8.12 (206)	7.04 (179)	22.52 (572)	—	12.01 (305)	12.01 (305)	760 (345)
MGX-5146A	1027596	1027597	B	1, 0	10	10.40 (264)	6.13 (156)	21.85 (555)	—	12.01 (305)	12.01 (305)	778 (353)
MGX-5146RV	1027740	1027741	C	—	10	10.40 (264)	6.13 (156)	5.68 (144)	17.96 (456)	12.01 (305)	12.01 (305)	694 (315)
MG-5146SC	1027904	1027905	A	1, 0	—	8.12 (206)	7.04 (179)	22.52 (572)	—	12.01 (305)	12.01 (305)	760 (345)
MG-5146A	1027902	1027903	B	1, 0	10	10.40 (264)	6.13 (156)	21.85 (555)	—	12.01 (305)	12.01 (305)	778 (353)
MG-5146RV	1027906	1027907	C	—	10	10.40 (264)	6.13 (156)	5.68 (144)	17.96 (456)	12.01 (305)	12.01 (305)	694 (315)

Dimensions may vary with housing adapter or output flange.

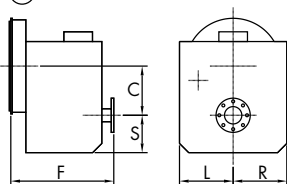
Use certified drawings for installation.

Dry weights are approximate and vary by input and ratio.

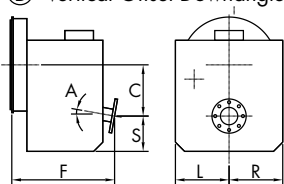
Specifications are subject to change without notice.

DIMENSIONS AND WEIGHTS FOR TWIN DISC MARINE TRANSMISSIONS

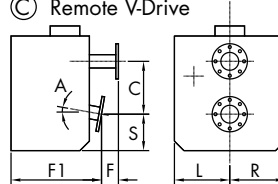
Ⓐ Vertical Offset



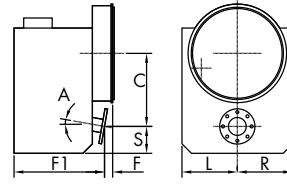
Ⓑ Vertical Offset Downangle



Ⓒ Remote V-Drive



Ⓓ Integral V-Drive



Model	Assembly Drawing	Installation Drawing Series	Config.	SAE Housing	A (deg.)	C (offset) in (mm)	S (sump) in (mm)	F (length) in (mm)	F1 (length) in (mm)	L (mounting pad) in (mm)	R (mounting pad) in (mm)	Weight lb (kg)
MGX-5147 SC	PX-12470-A	1026327	A	1, 0	—	8.12 (206)	7.04 (179)	21.05 (535)	—	12.01 (305)	12.01 (305)	716 (325)
MGX-5147 A	PX-12430-A	1025920	B	1, 0	10	10.40 (264)	6.13 (156)	20.33 (516)	—	12.01 (305)	12.01 (305)	734 (333)
MGX-5147 RV	PX-12540-A	PX-13299	C	—	10	10.40 (264)	6.13 (156)	5.77 (147)	18.06 (459)	12.01 (305)	12.01 (305)	650 (295)
MGX-516	1023380	1026197	A	1, 0 (14" only)	—	13.29 (338)	12.77 (324)	20.59 (523)	—	14.00 (356)	14.00 (356)	1580 (717)
MGX-5170 DC	1023382	1026199	A	1, 0	—	15.15 (385)	14.23 (361)	22.55 (573)	—	15.00 (381)	15.00 (381)	1670 (759)
MGX-5202 SC	1026316	1026322	A	1, 0, Ind.	—	9.75 (248)	8.75 (222)	23.45 (595)	—	14.75 (375)	10.50 (267)	1275 (580)
MGX-5204 SC	1026193	1026242	A	1, 0, Ind.	—	9.75 (248)	8.75 (222)	23.43 (595)	—	14.75 (375)	10.50 (267)	900 (409)
MGX-5222 DC	1022822-A	1025541	A	1, 0, Ind.	—	15.75 (400)	15.13 (384)	25.08 (637)	—	16.00 (406)	16.00 (406)	2304 (1046)
MGX-5225 DC	1022825-A	1025541	A	1, 0, Ind.	—	15.75 (400)	15.13 (384)	25.08 (637)	—	16.00 (406)	16.00 (406)	2304 (1046)
MGX-5321 DC	1022203-B	1026064	A	0, 00, Ind.	—	17.32 (440)	16.77 (426)	29.83 (758)	—	17.32 (440)	17.32 (440)	3864 (1754)
MG-540	X-9882-C	X-9882-C	A	0, 00, Ind.	—	8.08 (205)	13.45 (342)	36.47 (926)	—	16.00 (406)	16.00 (406)	4450 (2019)
MG-5506	00D005604	00D005604	A	0, 00, Ind.	—	19.29 (490)	19.29 (490)	39.17 (995)	—	20.08 (510)	20.08 (510)	4846 (2200)
MGX-5600	1027251	1027247	A	0, 00, Ind.	—	21.65 (550)	21.26 (540)	41.02 (1042)	—	20.67 (525)	20.67 (525)	6890 (3132)
MGX-5600 DR	1028410	1028499	A	Ind.	—	8.85 (225)	21.26 (540)	50.63 (1286)	—	20.67 (525)	20.67 (525)	7000 (3175)
MGN-1814 V	PPD007097	PPD007097	A	Ind.	—	16.73 (425)	19.69 (500)	55.12 (1400)	—	27.56 (700)	23.62 (600)	6608 (3000)
MGN-1816 V	PPD007098	PPD007098	A	Ind.	—	21.26 (540)	22.83 (580)	55.12 (1400)	—	29.53 (750)	29.53 (750)	8370 (3800)
MGN-1817 V	00D007099-B	00D007099-B	A	Ind.	—	26.38 (670)	27.56 (700)	55.12 (1400)	—	31.50 (800)	31.50 (800)	9912 (4500)
MGN-1819 V	PLN005679-B	PLN005679-B	A	Ind.	—	30.71 (780)	33.46 (850)	55.12 (1400)	—	37.40 (950)	37.40 (950)	TBA (TBA)
MG-6449 A	5-50006-B	7-38504-A	B	1, 0, Ind.	10	10.83 (275)	4.92 (125)	20.83 (529)	—	12.01 (305)	12.01 (305)	757 (344)
MG-6449 RV	7-37431-A	7-37431-A	C	—	10	10.88 (276)	6.44 (164)	6.32 (161)	20.32 (516)	12.01 (305)	12.01 (305)	782 (355)
MGX-6598 DC	7-40985	see 1025433	A	1, 0, Ind.	—	12.20 (310)	10.83 (275)	23.72 (603)	—	14.17 (360)	14.17 (360)	1278 (580)
MGX-6599 SC	7-40979	7-40989	A	1, 0, Ind.	—	8.66 (220)	9.29 (236)	23.31 (592)	—	13.39 (340)	13.39 (340)	1084 (492)
MGX-6599 A	7-40981	7-40987	B	1, 0, Ind.	10	11.70 (297)	6.25 (159)	22.60 (574)	—	13.39 (340)	13.39 (340)	1075 (488)
MGX-6599 RV	7-40983	7-40988	C	—	10	11.70 (297)	6.25 (159)	6.06 (154)	20.63 (524)	13.39 (340)	13.39 (340)	1031 (468)
MG-6600 DC	7-37941	7-36712-A	A	0, Ind.	—	14.17 (360)	14.96 (380)	30.87 (784)	—	14.76 (375)	14.76 (375)	1747 (794)
MGX-6620 SC	7-40980	see 1025433	A	0, Ind.	—	9.25 (235)	9.25 (235)	27.48 (698)	—	13.39 (340)	13.39 (340)	1267 (575)
MGX-6620 A	7-40982	see 1025433	B	0, Ind.	10	12.44 (316)	7.25 (184)	25.70 (653)	—	13.39 (340)	13.39 (340)	1278 (580)
MGX-6620 RV	7-40984	see 1025433	C	—	10	12.44 (316)	7.25 (184)	5.06 (129)	23.74 (603)	13.39 (340)	13.39 (340)	1123 (510)
MGX-6650 SC	1002046	1028862	A	0, 00, Ind.	—	12.21 (310)	11.81 (300)	30.13 (765)	—	17.32 (440)	17.32 (440)	2205 (1001)
MGX-6690 SC	1020674	1025142	A	0, 00, Ind.	—	12.21 (310)	11.81 (300)	30.13 (765)	—	17.32 (440)	17.32 (440)	2205 (1001)
MGX-6848 SC	1020675	1025142	A	0, 00, Ind.	—	12.21 (310)	11.81 (300)	30.13 (765)	—	17.32 (440)	17.32 (440)	2205 (1001)
MG-6984 SC	7-37482	7-38495	A	0, 00, Ind.	—	12.21 (310)	11.30 (287)	27.20 (691)	—	17.52 (445)	17.52 (445)	2628 (1192)
MG-6984 A	7-37950-A	7-37028	B	0, 00, Ind.	10	15.04 (382)	8.50 (216)	26.93 (684)	—	17.52 (445)	17.52 (445)	1991 (905)
MG-6984 RV	7-37042	7-37042	C	—	10	15.04 (382)	8.50 (216)	11.82 (300)	30.86 (784)	17.52 (445)	17.52 (445)	2002 (910)
MGX-61000 SC	1024420	1024771	A	00, Ind.	—	14.96 (380)	14.17 (360)	39.08 (993)	—	19.29 (490)	19.29 (490)	3920 (1780)
MG-61242 SC	7-37018	see 1025433	A	Ind.	—	13.39 (340)	12.17 (309)	29.80 (757)	—	19.69 (500)	19.69 (500)	2310 (1050)
MG-61242 A	7-37047	7-37046	B	Ind.	10	17.52 (445)	9.49 (241)	30.35 (771)	—	19.69 (500)	19.69 (500)	2431 (1105)
MG-61242 RV	7-37050	7-37049	C	—	10	17.52 (445)	9.49 (241)	11.34 (288)	32.56 (827)	19.69 (500)	19.69 (500)	2475 (1125)

Dimensions may vary with housing adapter or output flange.

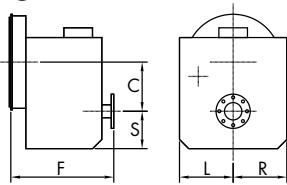
Use certified drawings for installation.

Dry weights are approximate and vary by input and ratio.

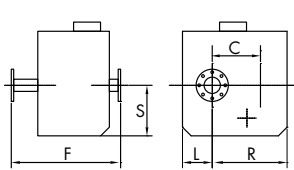
Specifications are subject to change without notice.

DIMENSIONS AND WEIGHTS FOR TWIN DISC MARINE TRANSMISSIONS

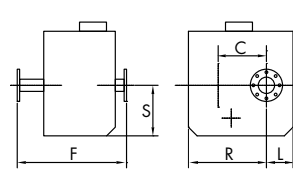
Ⓐ Vertical Offset



Ⓔ Horizontal Offset Left



Ⓕ Horizontal Offset Right



Model	Assembly Drawing	Installation Drawing Series	Con-fig.	SAE Housing	A (deg.)	C (offset) in (mm)	S (sump) in (mm)	F (length) in (mm)	F1 (length) in (mm)	L (mounting pad) in (mm)	R (mounting pad) in (mm)	Weight lb (kg)
MGX-61500 SC	1024500	1025454	A	Ind.	—	18.11 (460)	15.63 (397)	40.63 (1032)	—	18.23 (463)	18.23 (463)	4230 (1920)
MGX-61500 SC-HL	1023610	1025259	E	Ind.	—	18.11 (460)	24.36 (619)	40.04 (1017)	—	15.63 (397)	29.33 (745)	4840 (2195)
MGX-61500 SC-HR	1023611	1025260	F	Ind.	—	18.11 (460)	24.36 (619)	40.04 (1017)	—	29.33 (745)	15.63 (397)	4840 (2195)
MGX-62000SC-HL	1026779	1025259	E	Ind.	—	18.11 (460)	24.36 (619)	40.04 (10.17)	—	15.63 (397)	29.33 (745)	4840 (2195)
MGX-62000SC-HR	1026776	1025260	F	Ind.	—	18.11 (460)	24.36 (619)	40.04 (10.17)	—	29.33 (745)	15.63 (397)	4840 (2195)

Dimensions may vary with housing adapter or output flange.

Use certified drawings for installation.

Dry weights are approximate and vary by input and ratio.

Specifications are subject to change without notice.

TWIN DISC, INCORPORATED

1328 RACINE STREET
RACINE, WISCONSIN 53403 USA
TELEPHONE: +1 (262) 638-4000
TELEFAX: +1 (262) 638-4480
EMAIL: SALES@TWINDISC.COM



TWIN DISC INTERNATIONAL, S.A.

Chaussé de Namur, 54
B-1400 Nivelles
Belgium
Telephone: +32 (0) 67 887 211
Telefax: +32 (0) 67 887 333
E-mail: tdbelgium@twindisc.com

TWIN DISC SRL

Via S. Cristoforo 131
40017 S. Matteo Della Decima (BO)
Italy
Telephone: +39 051 6819711
Telefax: +39 051 6824234
6825814
E-mail: info.technodrive@twindisc.com

TWIN DISC SRL

Via E.e P. Salani 1
50050 Limite Sull'Arno (FI)
Italy
Phone: +39 0571 979111
Telefax: +39 0571 979143
E-Mail: info.bcs@twindisc.com

TWIN DISC, INC.

Latin America Office
3505 Lake Lynda Drive, Suite 200
Orlando, FL 32817
United States of America
Telephone: +1-407-574-3357
Cell: +1-954-663-3244
E-mail: eberhardt.erwin@twindisc.com

TWIN DISC (PACIFIC) PTY. LTD.

40 Telford Street
Virginia QLD 4014
Australia
Telephone: +61 (7) 3265-1200
Cell: +61 (7) 3865-1371
E-mail: twindisc.brisbane@twindisc.com.au

TWIN DISC (FAR EAST) PTE. LTD.

10, Fifth Lok Yang Road
Jurong
Singapore 629761
Telephone: +65 6267 0800
Telefax: +65 6264 2080
E-mail: enquiry@twindisc.com.sg

TWIN DISC POWER TRANSMISSION CO. LTD.

Shanghai Representative Office
Room 2308, No. 88 South Zun Yi Road
Chang Ning District
China 200336
Telephone: +86 (21) 6427 3212
+86 (21) 6209 7626
Telefax: +86 (21) 6209 7629
E-mail: enquiry@twindisc.com.cn

TWIN DISC POWER TRANSMISSION PRIVATE, LTD.

EL Heights, 1st Floor
3 CMM Street
Nungambakkam, Chennai, 600034
India
Telephone: +91 (44) 2821 3099

ROLLA SP PROPELLERS SA

Via Roncaglia 6
P.O. Box 109
Novazzano, 6883
Switzerland
Phone: + 41 (0) 91 695 2000
Telefax: + 41 (0) 91 695 2001
E-mail: info@rolla-propellers.ch

TWIN DISC JAPAN

Twin Disc Nico Co. Ltd.
405-3, Yoshinocho 1-chome, Kita-ku
Saitama-shi, Saitama-ken, 331-0811
Japan
Phone: +81 (48) 652-8069
Telefax: +81 (48) 665-6695
E-Mail: info@tdnico.com

TWIN DISC, INCORPORATED
RACINE, WISCONSIN, U.S.A.
UNITED STATES OF AMERICA • AUSTRALIA • BELGIUM
CANADA • CHINA • INDIA • ITALY • SINGAPORE • SWITZERLAND



Bulletin 319-B-MPG Nov-14 Printed in the USA

WWW.TWINDISC.COM