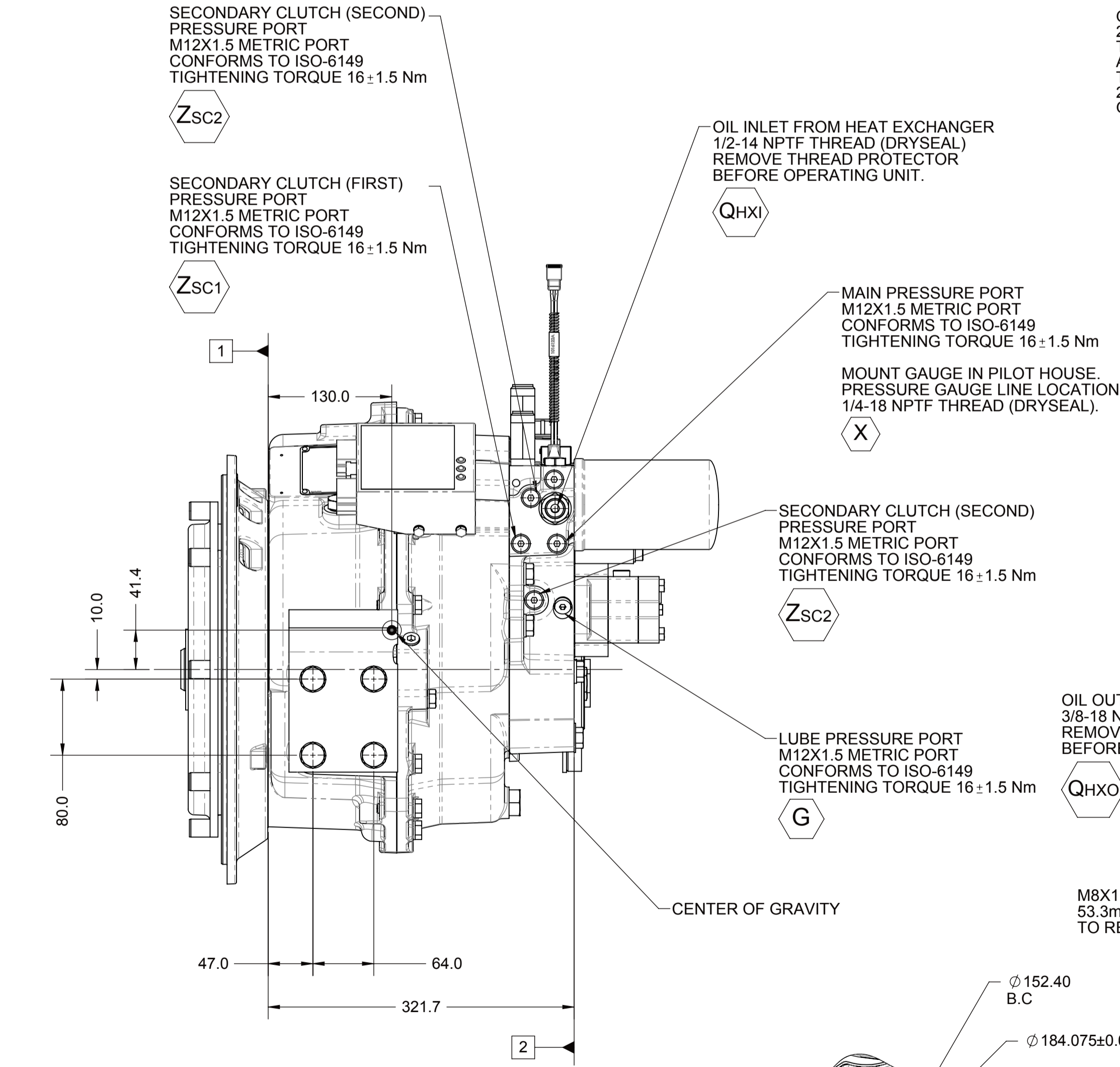
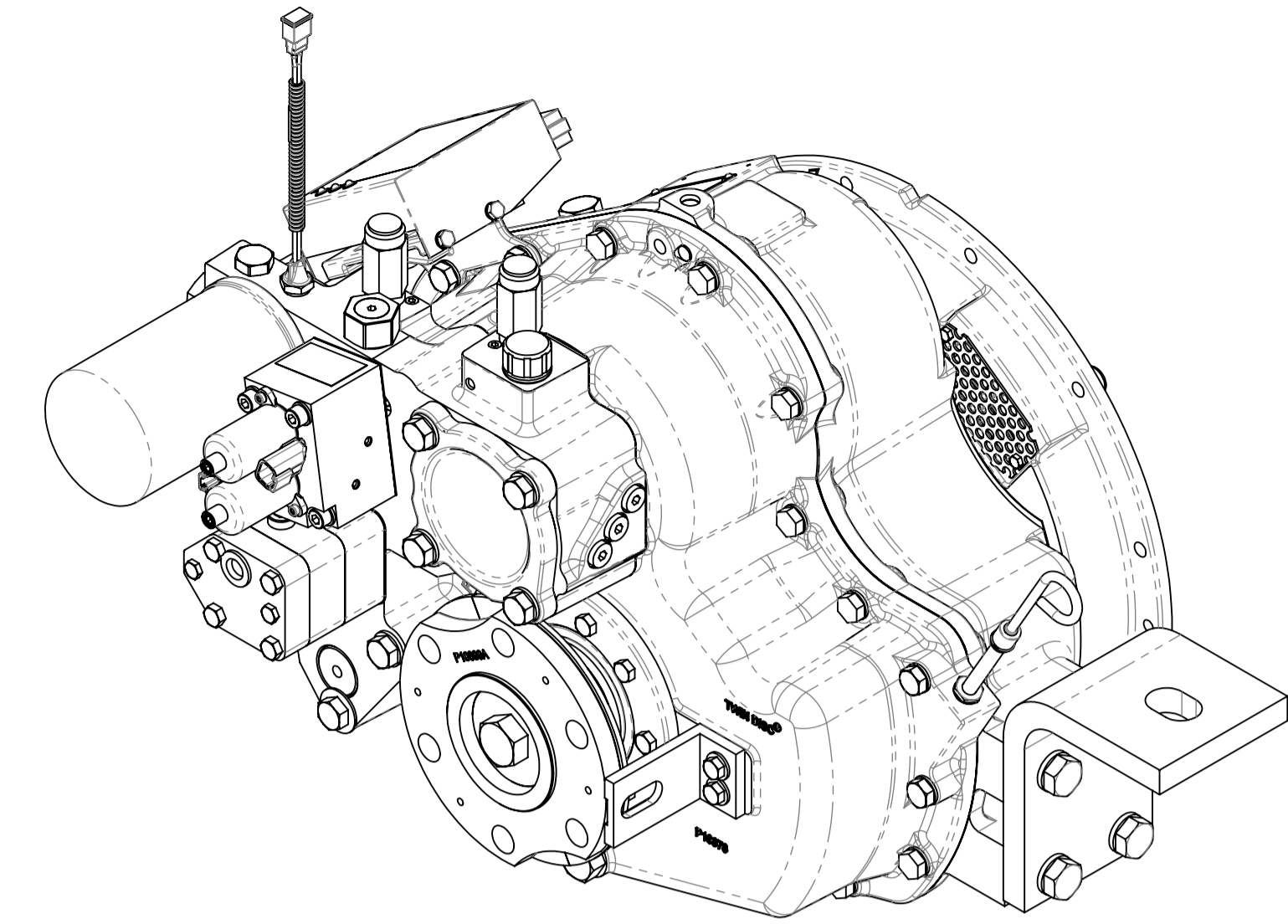
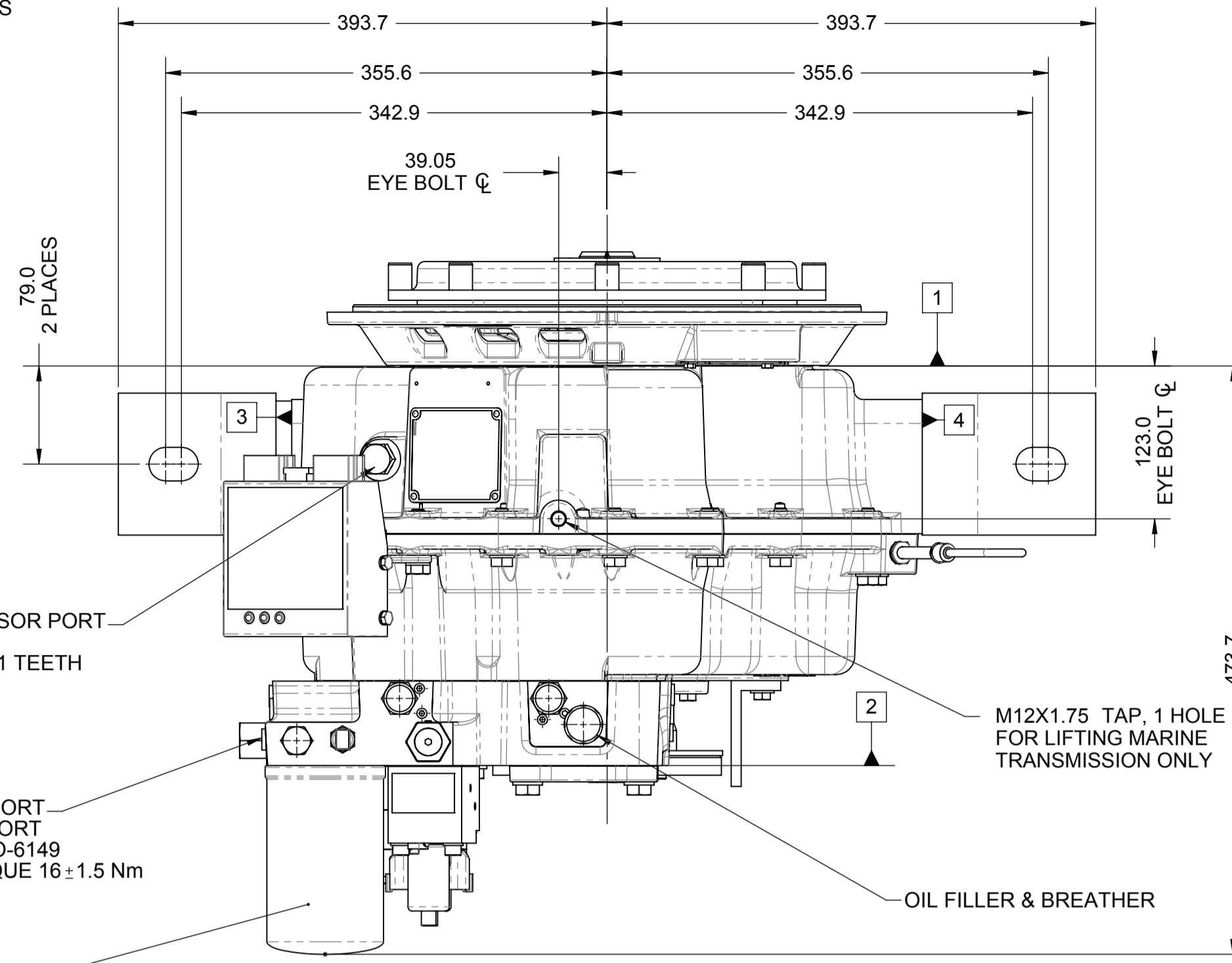
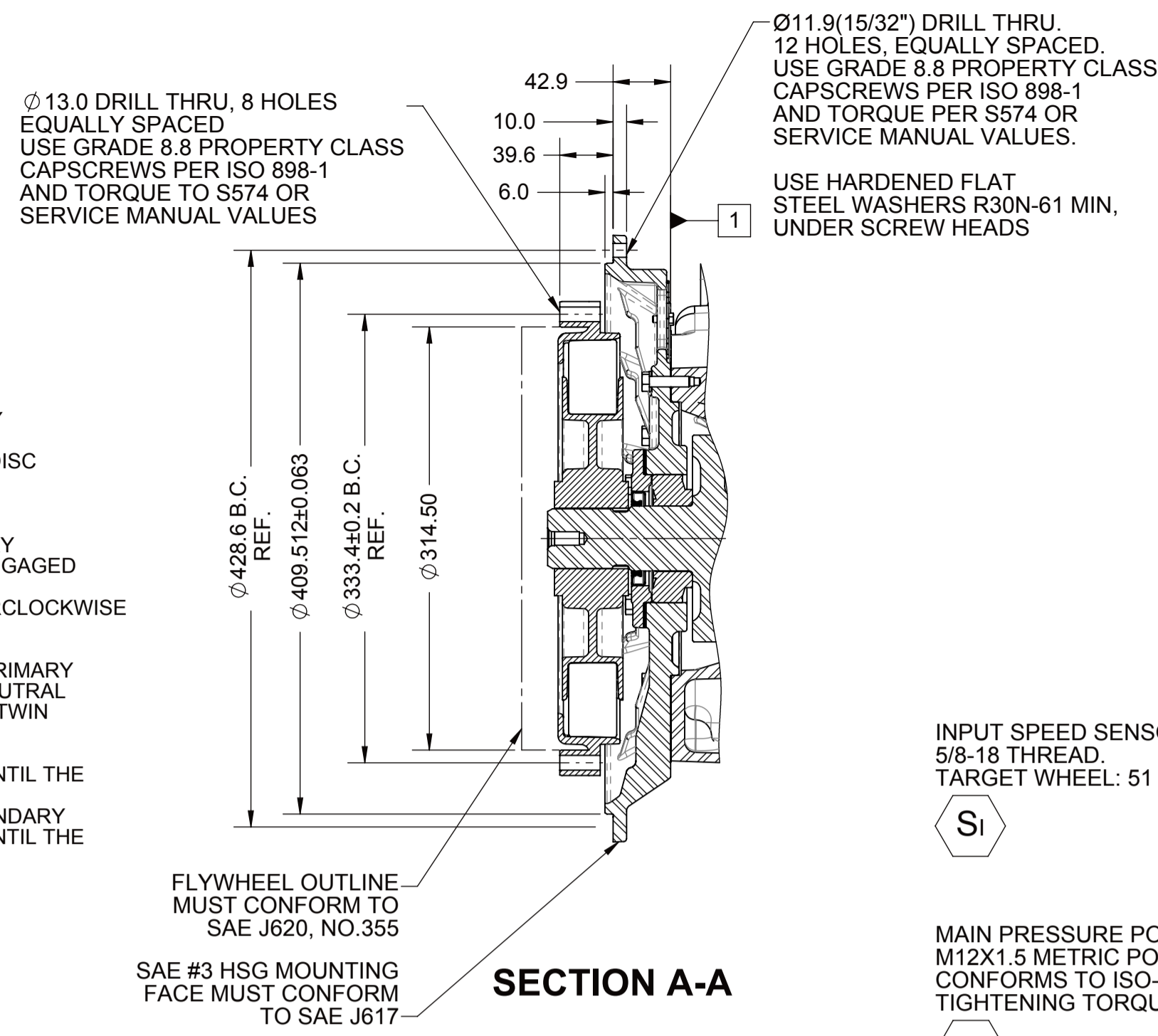


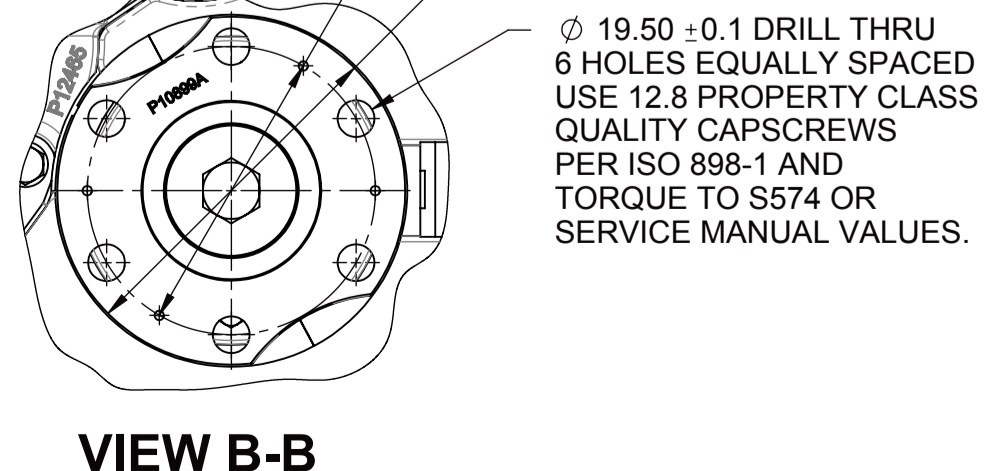
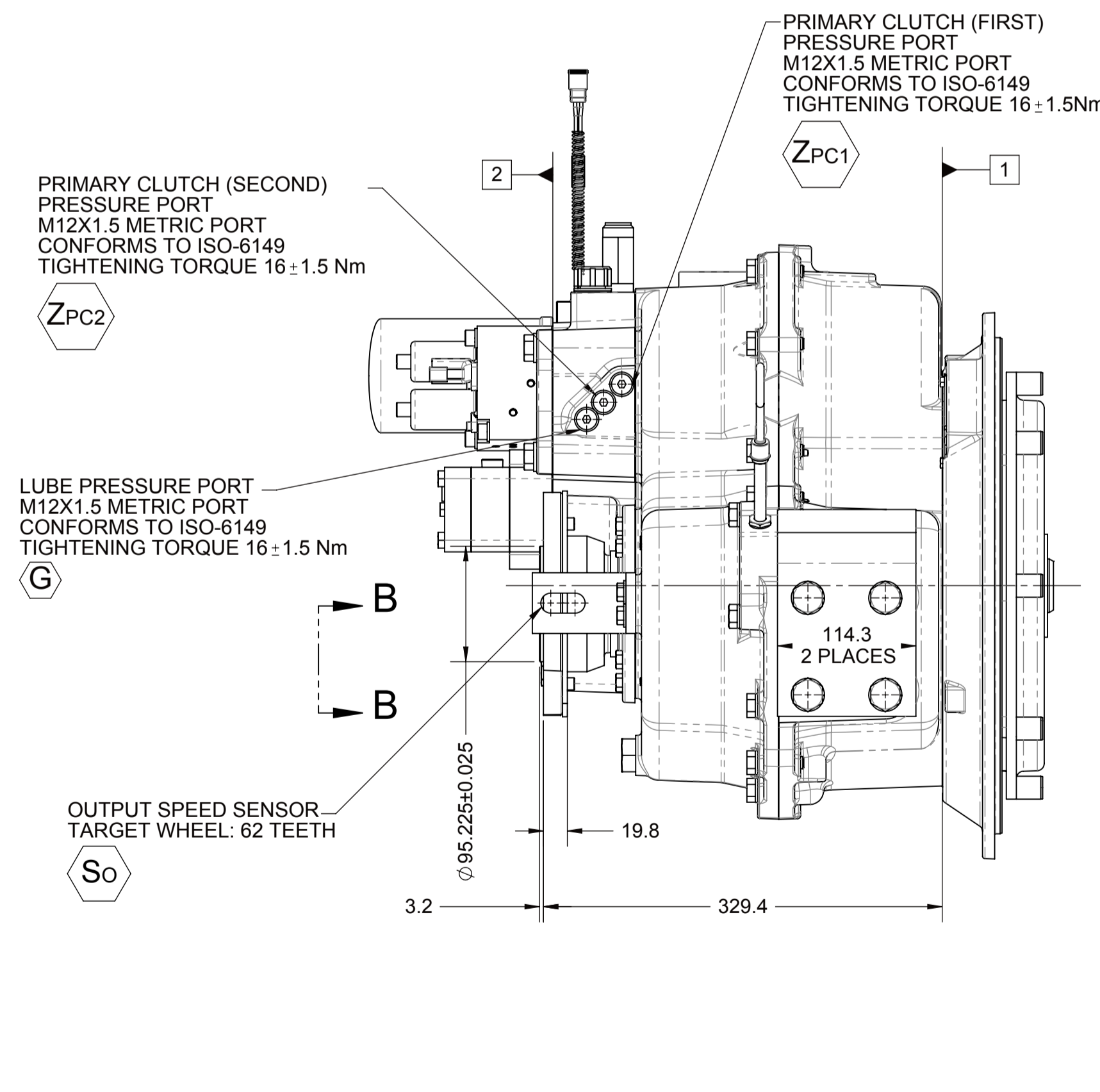
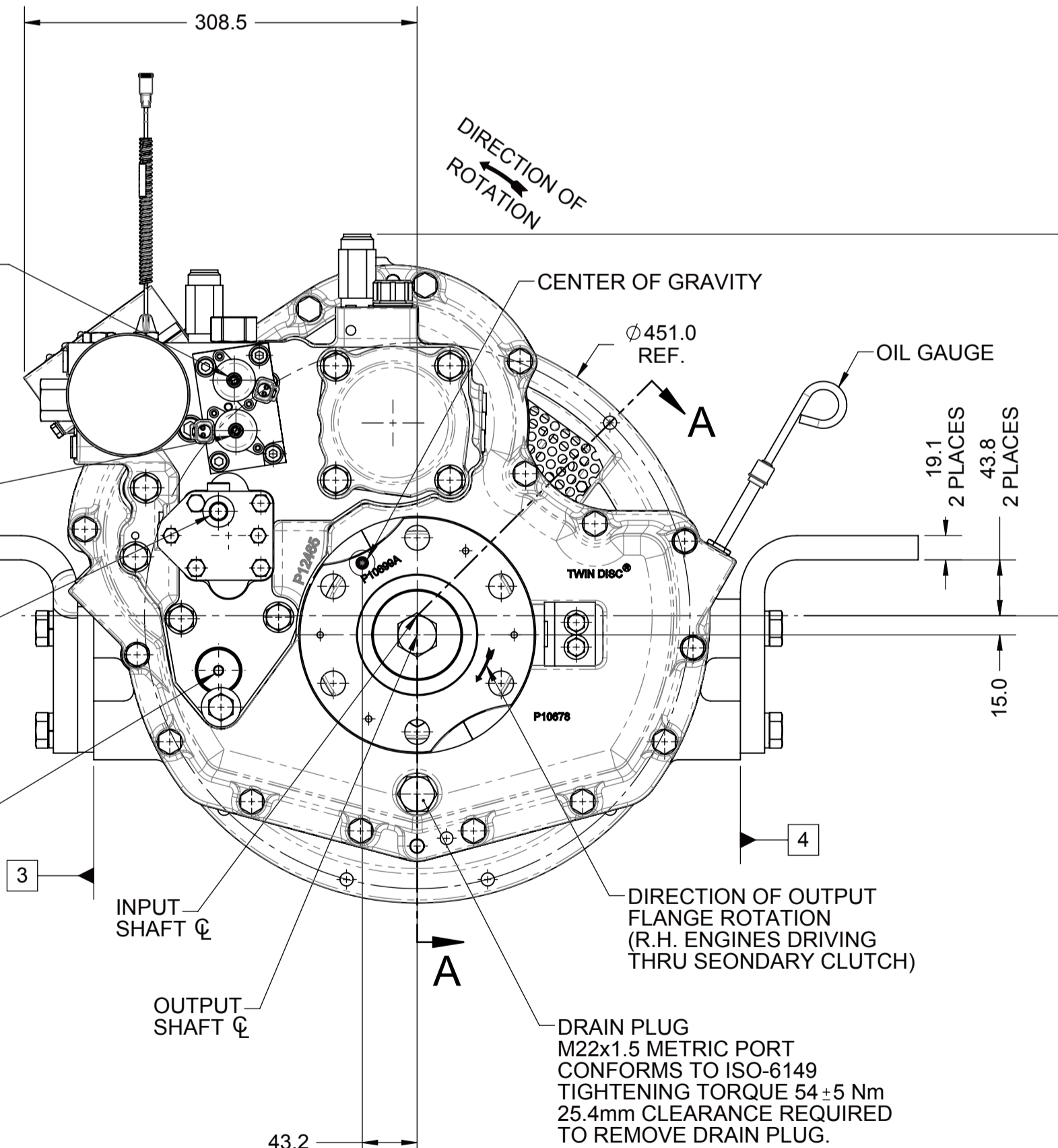
- 1 INPUT GROUP REFERENCE PLANE
- 2 PTO GROUP REFERENCE PLANE
- 3 LEFT MOUNTING BRACKET FACE
- 4 RIGHT MOUNTING BRACKET FACE

NOTES:

1. PROPORTIONAL CONTROL VALVE OPERATION
 - A. WARNING DO NOT CONNECT VALVE COIL DIRECTLY TO BATTERY/POWER SUPPLY VOLTAGE. OPERATION TO BE PERFORMED WITH ONLY TWIN DISC CONTROL SYSTEMS OR MODULES.
2. MANUAL OVERRIDE VALVE OPERATION
 - A. THE MANUAL OVERRIDE FEATURE FOR THE PRIMARY AND SECONDARY SOLENOIDS MUST NEVER BE ENGAGED SIMULTANEOUSLY.
 - B. ROTATE THE MANUAL OVERRIDE SCREW COUNTERCLOCKWISE UNTIL THE SCREWS STOPS FOR THE NEUTRAL POSITION.
 - C. THE MANUAL OVERRIDE SCREWS FOR BOTH THE PRIMARY AND SECONDARY SOLENOID MUST BE IN TEH NEUTRAL POSITION TO OPERATE THE VALVE UTILIZING THE TWIN DISC CONTROL SYSTEM.
 - D. TO ENGAGE PRIMARY CLUTCH TURN THE PRIMARY OVERRIDE SCREW IN A CLOCKWISE DIRECTION UNTIL THE SCREW STOPS TURNING.
 - E. TO ENGAGE SECONDARY CLUTCH TURN THE SECONDARY OVERRIDE SCREW IN A CLOCKWISE DIRECTION UNTIL THE SCREW STOPS TURNING.



OIL FILTER
22.0 mm CLEARANCE REQUIRED TO REMOVE FILTER CANISTER. APPLY OIL TO FILTER GASKET. TIGHTEN FILTER AN ADDITIONAL 2/3 OF TURN AFTER FILTER GASKET MAKES CONTACT



- NOTES:**
- REFERENCE S930 FOR TWIN DISC REQUIREMENTS FOR PRESSURE AND TEMPERATURE ALARM LEVELS.
 - ALL POINTS AVAILABLE FOR TESTING ARE CODED

EQUIPMENT SHOWN:

- MGX-5075SC PER PX12620 ASSEMBLY
- SAE #3/SAE 290 CENTA CF-R-178-HR
- GP VALVE WITH EC050 PROFILE MODULE
- SAE #4 OUTPUT FLANGE
- 1016428AK MOUNTING BRACKET

FIRST USE ASSEMBLY:	WEIGHT: 156.6g	THIRD ANGLE PROJECTION	MATERIAL:	DATE: 03/09/2015
FIRST USE MODEL: MGX-5075SC	WR: kg-m	UNLESS OTHERWISE SPECIFIED MACHINED DIMENSIONS: X ±0.75 X X ±0.25 X XX ±0.13 ALL ANGULAR TOLERANCES AT GEOMETRIC TOLERANCING PER ASME Y14.5M 1994	HEAT TREAT:	SCALE: 1:4
SIMILAR TO:	METRIC	THIS NOTICE IS NOT INTENDED TO NULLIFY OR LIMIT RIGHTS GRANTED TO THE U.S. GOVERNMENT OR OTHERS BY CONTRACT.	DESCRIPTION: INSTALLATION MGX-5075SC	DRAWN BY: MG
				CHECKED BY: DV
				APPROVED BY: DV
				DWG SIZE: A1 SHEET: 1 OF 1

NDWF-50353 04/08/2015
REV CHANGE NO. DATE

TWIN DISC
RACINE, WI 53403 - USA

PX13174B