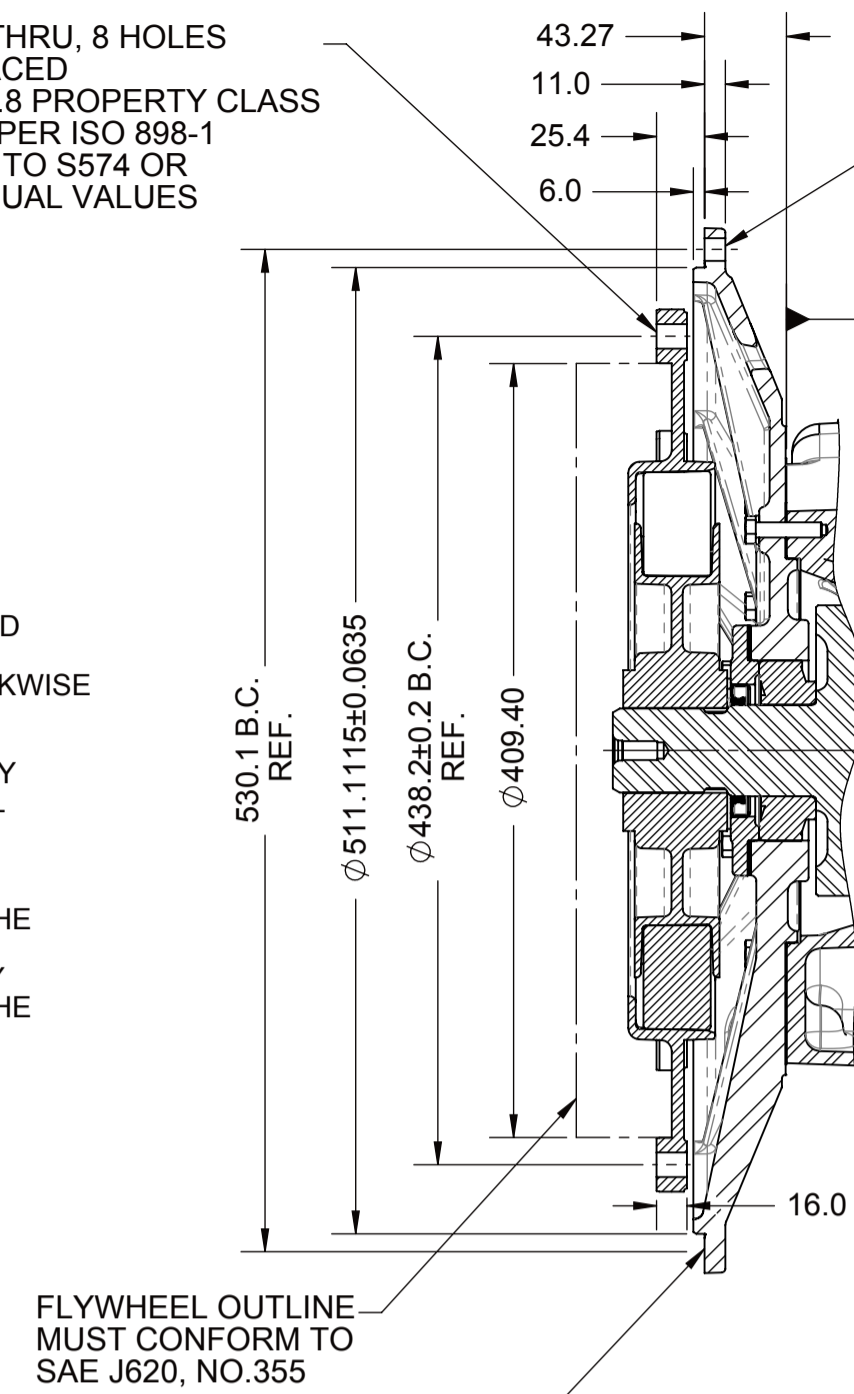


- 1 INPUT GROUP REFERENCE PLANE
- 2 PTO GROUP REFERENCE PLANE
- 3 LEFT MOUNTING BRACKET FACE
- 4 RIGHT MOUNTING BRACKET FACE

Ø 13.0 DRILL THRU, 8 HOLES EQUALLY SPACED. USE GRADE 8.8 PROPERTY CLASS CAPSCREWS PER ISO 898-1 AND TORQUE TO S574 OR SERVICE MANUAL VALUES

**NOTES:**

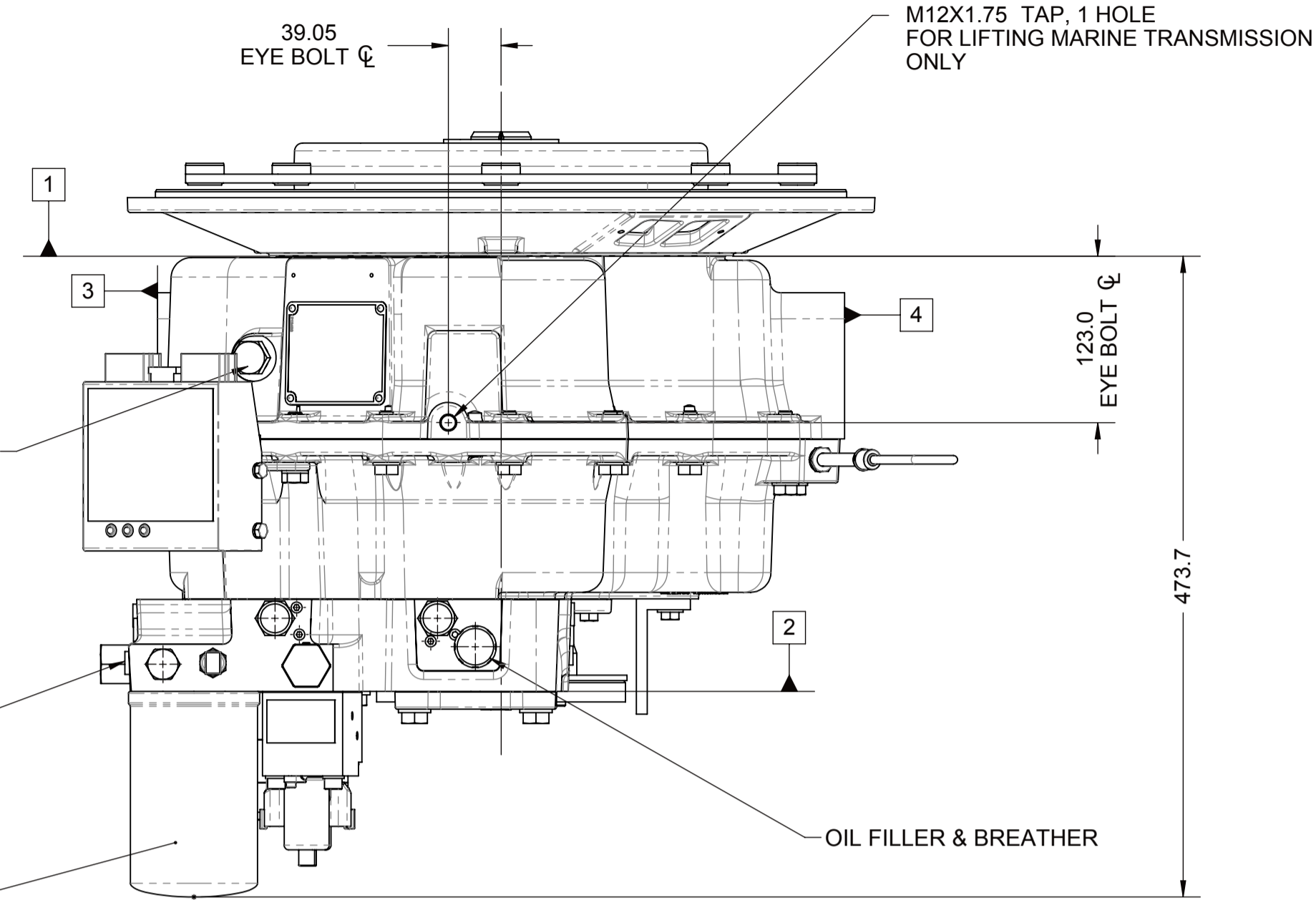
1. ROPTIONAL CONTROL VALVE OPERATION
  - A. WARNING DO NOT CONNECT VALVE COIL DIRECTLY TO BATTERY/POWER SUPPLY VOLTAGE.
  - B. OPERATION TO BE PERFORMED WITH ONLY TWIN DISC CONTROL SYSTEMS OR MODULES.
2. MANUAL OVERRIDE VALVE OPERATION
  - A. THE MANUAL OVERRIDE FEATURE FOR THE PRIMARY AND SECONDARY SOLENOIDS MUST NEVER BE ENGAGED SIMULTANEOUSLY.
  - B. ROTATE THE MANUAL OVERRIDE SCREW COUNTERCLOCKWISE UNTIL THE SCREWS STOPS FOR THE NEUTRAL POSITION.
  - C. THE MANUAL OVERRIDE SCREWS FOR BOTH THE PRIMARY AND SECONDARY SOLENOID MUST BE IN THE NEUTRAL POSITION TO OPERATE THE VALVE UTILIZING THE TWIN DISC CONTROL SYSTEM.
  - D. TO ENGAGE PRIMARY CLUTCH TURN THE PRIMARY OVERRIDE SCREW IN A CLOCKWISE DIRECTION UNTIL THE SCREW STOPS TURNING.
  - E. TO ENGAGE SECONDARY CLUTCH TURN THE SECONDARY OVERRIDE SCREW IN A CLOCKWISE DIRECTION UNTIL THE SCREW STOPS TURNING.



**SECTION A-A**

Ø 11.9 (15/32") DRILL THRU, 12 HOLES, EQUALLY SPACED. USE GRADE 8.8 PROPERTY CLASS CAPSCREWS PER ISO 898-1 AND TORQUE PER S574 OR SERVICE MANUAL VALUES.

USE HARDENED FLAT STEEL WASHERS R30N-61 MIN, UNDER SCREW HEADS



INPUT SPEED SENSOR PORT  
5/8-18 THREAD.  
TARGET WHEEL: 51 TEETH

MAIN PRESSURE PORT  
M12X1.5 METRIC PORT  
CONFORMS TO ISO-6149  
TIGHTENING TORQUE 16 ± 1.5 Nm

OIL FILTER  
22.0 mm CLEARANCE REQUIRED TO REMOVE FILTER CANISTER. APPLY OIL TO FILTER GASKET. TIGHTEN FILTER AN ADDITIONAL 2/3 OF TURN AFTER FILTER GASKET MAKES CONTACT

SECONDARY CLUTCH (SECOND) PRESSURE PORT  
M12X1.5 METRIC PORT  
CONFORMS TO ISO-6149  
TIGHTENING TORQUE 16 ± 1.5 Nm

SECONDARY CLUTCH (FIRST) PRESSURE PORT  
M12X1.5 METRIC PORT  
CONFORMS TO ISO-6149  
TIGHTENING TORQUE 16 ± 1.5 Nm

OIL INLET FROM HEAT EXCHANGER  
1/2-14 NPTF THREAD (DRYSEAL)  
REMOVE THREAD PROTECTOR BEFORE OPERATING UNIT.

MAIN PRESSURE PORT  
M12X1.5 METRIC PORT  
CONFORMS TO ISO-6149  
TIGHTENING TORQUE 16 ± 1.5 Nm

MOUNT GAUGE IN PILOT HOUSE.  
PRESSURE GAUGE LINE LOCATION  
1/4-18 NPTF THREAD (DRYSEAL).

SECONDARY CLUTCH (SECOND) PRESSURE PORT  
M12X1.5 METRIC PORT  
CONFORMS TO ISO-6149  
TIGHTENING TORQUE 16 ± 1.5 Nm

LUBE PRESSURE PORT  
M12X1.5 METRIC PORT  
CONFORMS TO ISO-6149  
TIGHTENING TORQUE 16 ± 1.5 Nm

CENTER OF GRAVITY

M16X2.0 THREAD 33.0 DEEP  
8 HOLES. USE ALL (8) HOLES, 4 PER SIDE FOR MOUNTING. USE GRADE 8.8 PROPERTY CLASS CAPSCREWS PER ISO 898-1 AND TORQUE TO S574.

ENGAGES PRIMARY CLUTCH  
SEE NOTES A & B

ENGAGES SECONDARY CLUTCH  
SEE NOTES A & B

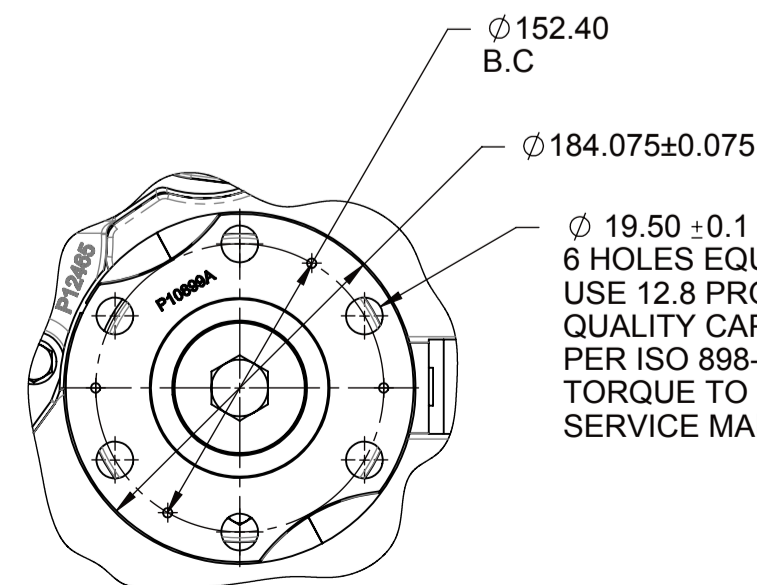
OIL OUTLET TO HEAT EXCHANGER  
3/8-18 NPTF THREAD (DRYSEAL)  
REMOVE THREAD PROTECTOR BEFORE OPERATING UNIT.

CENTER OF GRAVITY

M8X1.25 TAP, 7.5 DEEP  
53.3mm CLEARANCE REQUIRED TO REMOVE SUCTION SCREEN

CENTER OF GRAVITY

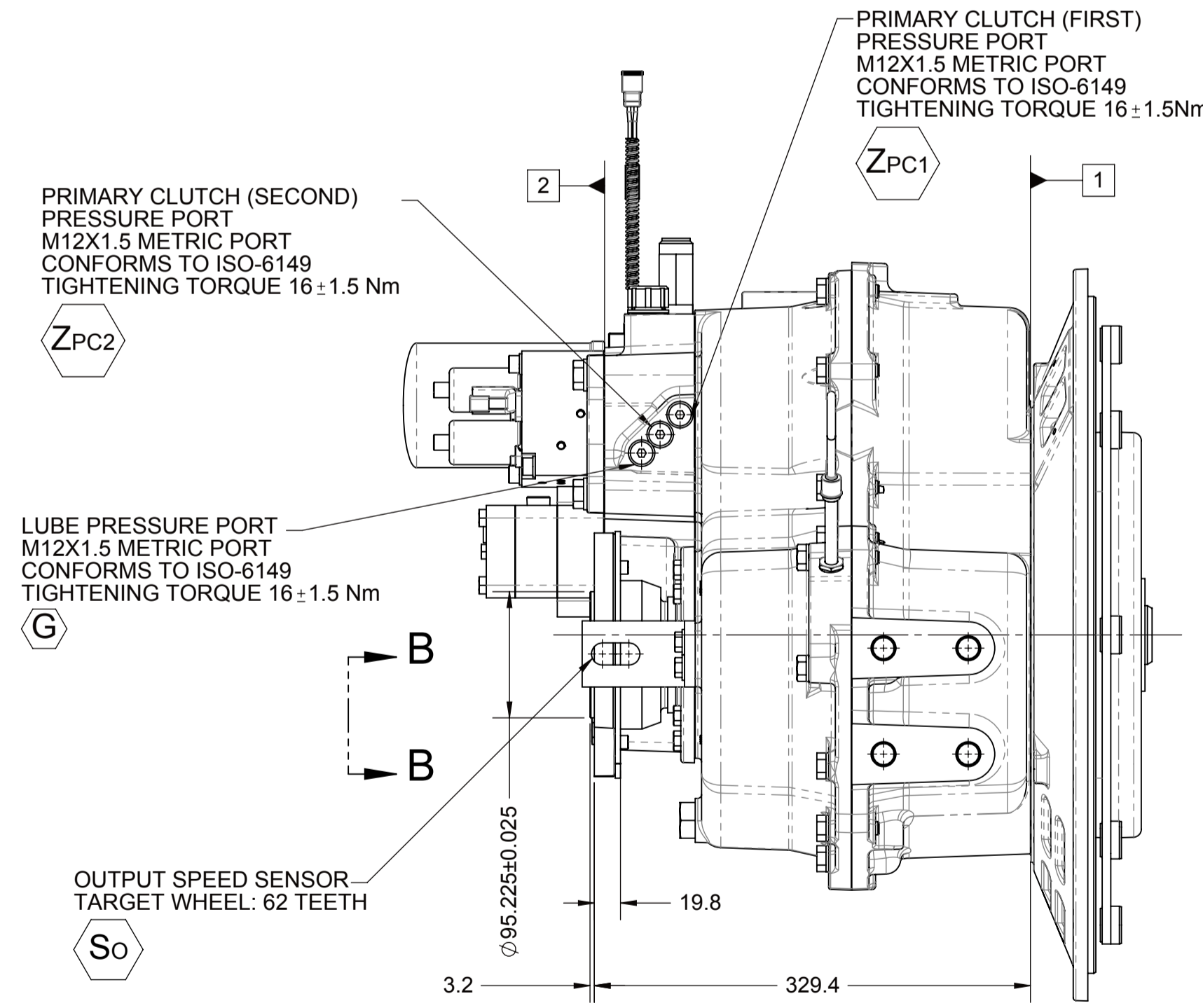
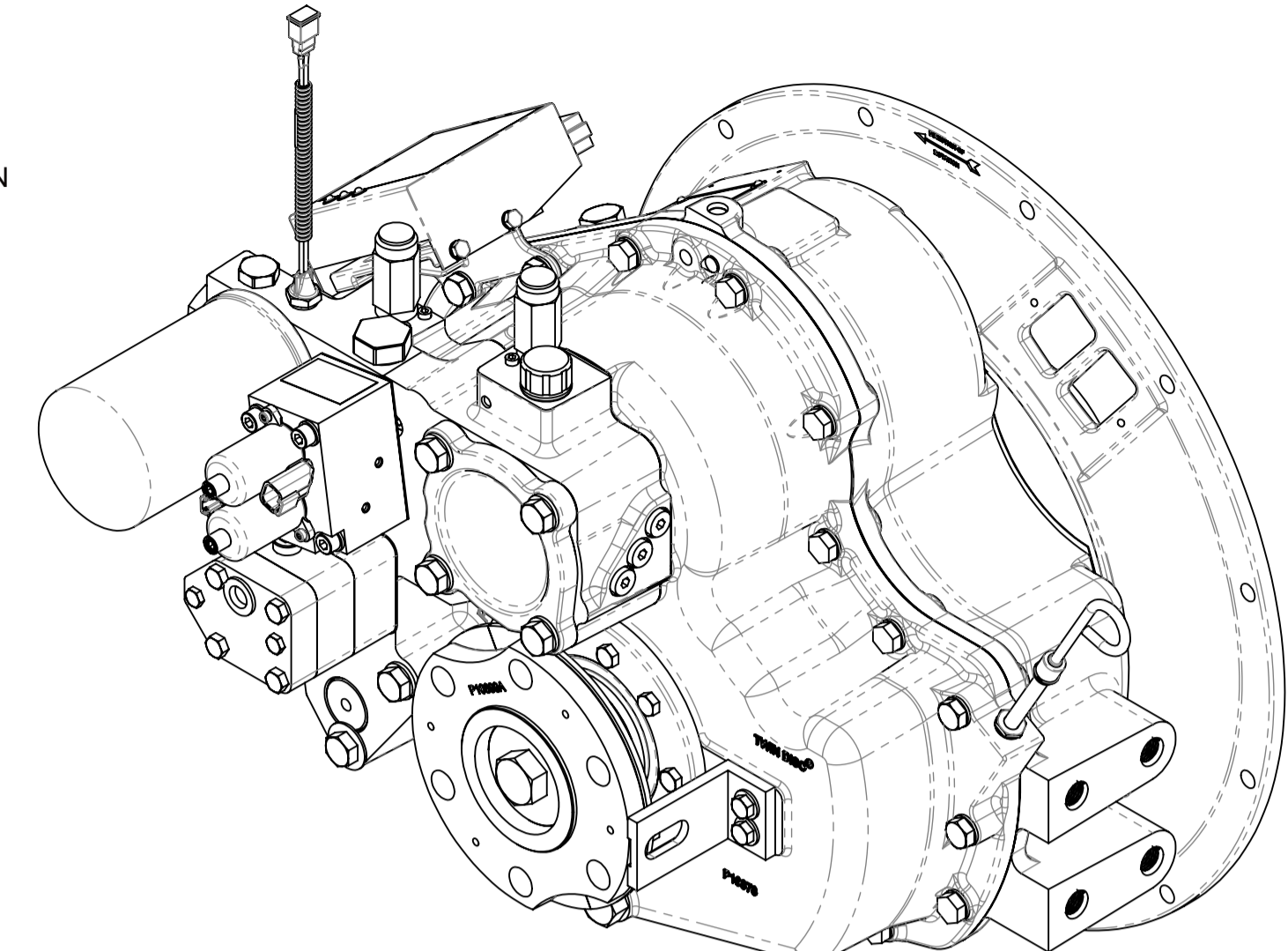
M8X1.25 TAP, 7.5 DEEP  
53.3mm CLEARANCE REQUIRED TO REMOVE SUCTION SCREEN



**VIEW B-B**

**EQUIPMENT SHOWN:**

- MGX-5075SC PER PX12620 ASSEMBLY
- SAE #1/SAE 355 CENTA CF-R-178-HR
- GP VALVE WITH EC050 PROFILE MODULE
- SAE #4 OUTPUT FLANGE



PRIMARY CLUTCH (SECOND) PRESSURE PORT  
M12X1.5 METRIC PORT  
CONFORMS TO ISO-6149  
TIGHTENING TORQUE 16 ± 1.5 Nm

LUBE PRESSURE PORT  
M12X1.5 METRIC PORT  
CONFORMS TO ISO-6149  
TIGHTENING TORQUE 16 ± 1.5 Nm

OUTPUT SPEED SENSOR  
TARGET WHEEL: 62 TEETH

PRIMARY CLUTCH (FIRST) PRESSURE PORT  
M12X1.5 METRIC PORT  
CONFORMS TO ISO-6149  
TIGHTENING TORQUE 16 ± 1.5 Nm

**NOTES:**  
ALL POINTS AVAILABLE FOR TESTING ARE CODED

FIRST USE ASSEMBLY: PX12620	WEIGHT: 138.3kg	THIRD ANGLE PROJECTION	MATERIAL:	DATE: 01/23/2014
FIRST USE MODEL: MGX-5075SC	WR: kg-m <sup>3</sup>	UNLESS OTHERWISE SPECIFIED MACHINED DIMENSIONS: X ± 0.75, XX ± 0.25, XXX ± 0.13	HEAT TREAT:	SCALE: 1:4
SIMILAR TO:		ALL ANGULAR TOLERANCES AT GEOMETRIC TOLERANCING PER ASME Y14.5M 1994	DESCRIPTION: INSTALLATION MGX-5075SC	DRAWN BY: PM
<p><b>METRIC</b></p> <p>THIS NOTICE IS NOT INTENDED TO NULLIFY OR LIMIT RIGHTS GRANTED TO THE U.S. GOVERNMENT OR OTHERS BY CONTRACT.</p>			APPROVED BY: ALC	CHECKED BY: ALC
		<p>TWIN DISC</p> <p>RACINE, WI 53403 - USA</p>		<p>PX13174A</p> <p>DWG SIZE: A1 SHEET: 1 OF 1</p>

F

E

D

C

B

A