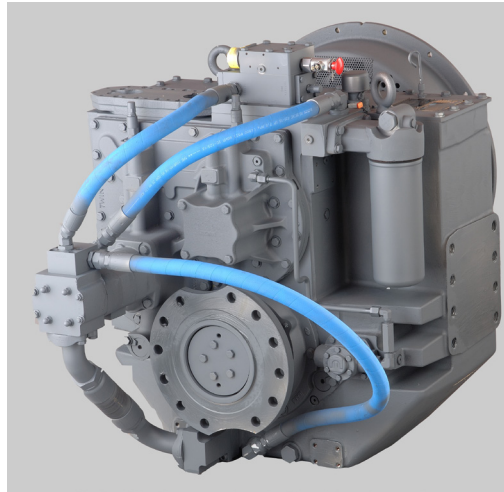


Maximum 1342 kW (1800 hp) @1800 RPM (MEDIUM DUTY)

**STANDARD EQUIPMENT**

**MGX-6848SC**

- Vertical offset, aluminum housing
- Electric GP-valve with manual override
- EC050 Profile module
  - interface for engagement signals
- Mounted oil cooler for raw water cooling
- Oil strainer and oil filter



**INPUT RATINGS - KILOWATS (KW) (HORSEPOWER (HP))\***

For service classification definitions and important notes refer to [www.twindisc.com](http://www.twindisc.com), the Twin Disc Marine Product Guide or contact Twin Disc directly.

Reduction Ratios :1	Intermediate Duty		Medium Duty		Continuous Duty	
	@ 1800 RPM	@ 2100 RPM	@ 1600 RPM	@ 1800 RPM	@ 1600 RPM	@ 1800 RPM
1.51, 1.88, 2.03 2.37, 2.47, 2.58 2.93	1342 kW (1800 hp)	1566 kW (2100 hp)	1187 kW (1592 hp)	1342 kW (1800 hp)	1111 kW (1490 hp)	1250 kW (1676 hp)
3.21	1269 kW (1702 hp)	1453 kW (1948 hp)	1103 kW (1479 hp)	1226 kW (1644 hp)	1074 kW (1440 hp)	1194 kW (1601 hp)

\* Ratings shown for use with standard right-hand rotation engines.  
The maximum allowable rated engine speed is 2300 rpm (2500 rpm for ratios 2.47:1, 2.93:1 and 3.21:1).



Specifications subject to change without prior notice in the interest of continual product improvement. Contact your local Twin Disc representative for engineering specifications, Survey Society Approvals and Classifications.

Scan QR code to see Twin Disc's entire Marine product line.



## OPTIONS

SAE J617 housing no.0

SAE J617 housing no.00

Flexible coupling for 18" flywheel (SAE J620 size 460)

Flexible coupling for 21" flywheel (SAE J620 size 530)

Input hub for freestanding installation

Mechanical control valve

EC050 E-Troll module – interface for engagement & trolling signals

Harness with single point interface to Twin Disc EC300 control system

Oil cooler for fresh water cooling

Output shaft driven trailing pump

Companion flange/bolts set

Monitoring devices to customer's specification

Mounting brackets

Live PTO

SAE J744 size 101-2, 22-4 (SAE "B", 2-bolt) – max. 209 Nm

SAE J744 size 127-2/4, 32-4 (SAE "C", 2/4-bolt) – max. 592 Nm

SAE J744 size 127-2/4, 38-4 (SAE "C-C", 2/4-bolt) – max. 1187 Nm

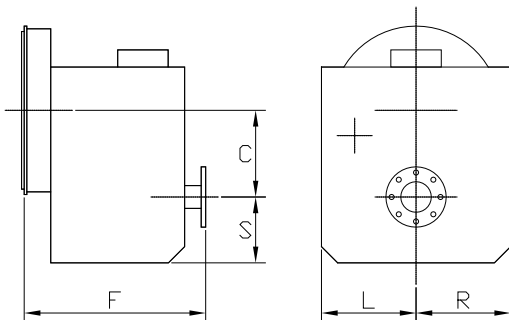
Hydraulic clutchable pump mount PTO

SAE J744 size 127-2/4, 32-4 (SAE "C", 2/4-bolt) – max. 592 Nm

SAE J744 size 127-2/4, 38-4 (SAE "C-C", 2/4-bolt) – max. 1186 Nm

Dry weight incl. SAE #0 housing and SAE 460 flexible coupling: **1001 kg**

## MGX-6848SC



C	310 mm (12.20")
S	300 mm (11.81")
F	758 mm (29.83")
L	440 mm (17.32")
R	440 mm (17.32")

Twin Disc, Incorporated reminds users of these products that their safe operation depends on use in compliance with engineering information provided in our catalog. Users are also reminded that safe operation depends on proper installation, operation and routine maintenance and inspection under prevailing conditions. It is the responsibility of users (and not Twin Disc, Incorporated) to provide and install guards or safety devices which may be required by recognized safety standards or by the Occupational Safety and Health Act of 1970 and its subsequent provisions.

United States of America • Australia • Belgium • Canada • China • India • Italy • Singapore • Switzerland

For nearly a century, we've been making boats perform better and more reliably. From system-design consultation to application development to in-service support, Twin Disc provides fully integrated propulsion solutions that will optimize your craft's performance, reliability and safety over the years. Bring Twin Disc aboard early in the development process, and you'll enjoy a lifetime of enhanced operating value.

TRANSMISSIONS • ELECTRONIC CONTROLS • EXPRESS JOYSTICK SYSTEM® • SAILDRIVES • EXPRESS POSITIONING® • ARNESON SURFACE DRIVES • MARINE CONTROL DRIVES • ROLLA PROPELLERS • BOW & STERN THRUSTERS • STEERING SYSTEMS • RUDDERS • TRIM TABS



Twin Disc, Incorporated  
Racine, Wisconsin 53403 USA  
Phone +1-262-638-4000  
Fax +1-262-638-4482  
www.twindisc.com

*TD-Bulletin-MGX-6848SC  
© 2016, Twin Disc, Incorporated  
Printed in the USA - 2/2016*