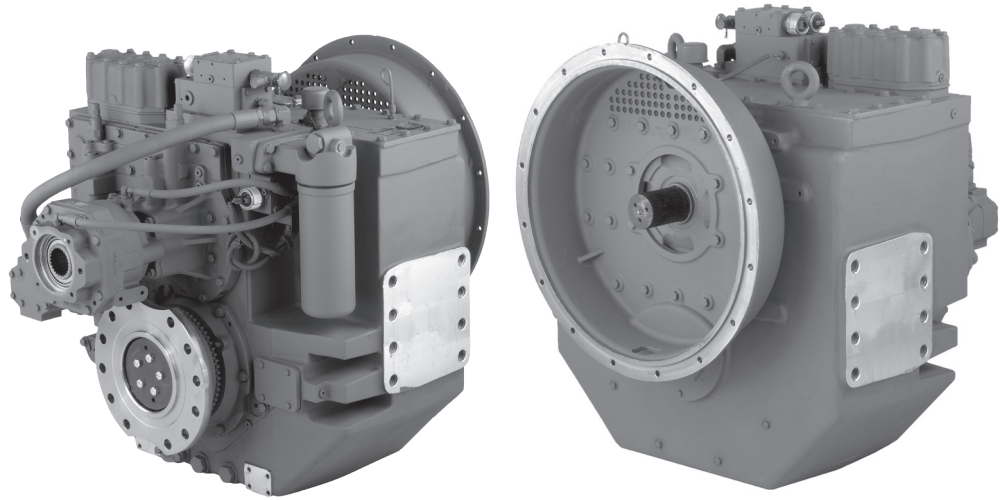


Maximum 1174 kW (1574 hp) @1800 RPM (MEDIUM DUTY)

**STANDARD EQUIPMENT**

**MGX-6690SC**

- Vertical offset, aluminum housing
- Electric GP-valve with manual override
- EC050 Profile module
  - interface for engagement signals
- Mounted oil cooler for raw water cooling
- Oil strainer and oil filter



**INPUT RATINGS - KILOWATTS (KW) (HORSEPOWER (HP))\***

For service classification definitions and important notes refer to [www.twindisc.com](http://www.twindisc.com), the Twin Disc Marine Product Guide or contact Twin Disc directly.

Reduction Ratios :1	Intermediate Duty		Medium Duty		Continuous Duty	
	@ 1800 RPM	@ 2100 RPM	@ 1600 RPM	@ 1800 RPM	@ 1600 RPM	@ 1800 RPM
1.51, 1.88, 2.03 2.37, 2.47, 2.81	1201 kW (1611 hp)	1380 kW (1851 hp)	1054 kW (1413 hp)	1174 kW (1574 hp)	1017 kW (1364 hp)	1129 kW (1514 hp)
2.93		1318 kW (1767 hp)	1034 kW (1387 hp)	1144 kW (1534 hp)	977 kW (1310 hp)	1069 kW (1375 hp)
3.21		1280 kW (1716 hp)	1018 kW (1365 hp)	1119 kW (1501 hp)	943 kW (1265 hp)	1028 kW (1375 hp)

\* Ratings shown for use with standard right-hand rotation engines.  
The maximum allowable rated engine speed is 2300 rpm (2500 rpm for ratios 2.47:1, 2.93:1 and 3.21:1).



Specifications subject to change without prior notice in the interest of continual product improvement. Contact your local Twin Disc representative for engineering specifications, Survey Society Approvals and Classifications.

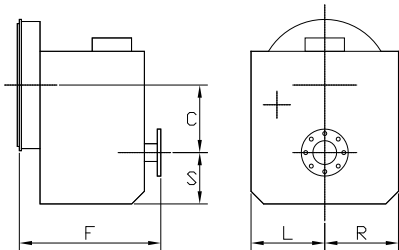
Scan QR code to see Twin Disc's entire Marine product line.



## OPTIONS

- SAE J617 housing no.0
- SAE J617 housing no.00
- Flexible coupling for 18" flywheel (SAE J620 size 460)
- Flexible coupling for 21" flywheel (SAE J620 size 530)
- Input hub for freestanding installation
- Mechanical control valve
- EC050 E-Troll module – interface for engagement & trolling signals
- Harness with single point interface to Twin Disc EC300 control system
- Oil cooler for fresh water cooling
- Output shaft driven trailing pump
- Companion flange/ bolts set
- Monitoring devices to customer's specification
- Mounting brackets
- Live PTO
  - SAE J744 size 101-2, 22-4 (SAE "B", 2-bolt) – max. 209 Nm
  - SAE J744 size 127-2/4, 32-4 (SAE "C", 2/4-bolt) – max. 592 Nm
  - SAE J744 size 127-2/4, 38-4 (SAE "C-C", 2/4-bolt) – max. 1187 Nm
- Hydraulic clutchable pump mount PTO
  - SAE J744 size 127-2/4, 32-4 (SAE "C", 2/4-bolt) – max. 592 Nm
  - SAE J744 size 127-2/4, 38-4 (SAE "C-C", 2/4-bolt) – max. 1186 Nm
- Dry weight incl. SAE #0 housing and SAE 460 flexible coupling: **1001 kg**

## MGX-6690SC



C	310 mm (12.20")
S	300 mm (11.81")
F	758 mm (29.83")
L	440 mm (17.32")
R	440 mm (17.32")

Twin Disc, Incorporated reminds users of these products that their safe operation depends on use in compliance with engineering information provided in our catalog. Users are also reminded that safe operation depends on proper installation, operation and routine maintenance and inspection under prevailing conditions. It is the responsibility of users (and not Twin Disc, Incorporated) to provide and install guards or safety devices which may be required by recognized safety standards or by the Occupational Safety and Health Act of 1970 and its subsequent provisions.

United States of America • Australia • Belgium • Canada • China • India • Italy • Singapore • Switzerland

For nearly a century, we've been making boats perform better and more reliably. From system-design consultation to application development to in-service support, Twin Disc provides fully integrated propulsion solutions that will optimize your craft's performance, reliability and safety over the years. Bring Twin Disc aboard early in the development process, and you'll enjoy a lifetime of enhanced operating value.

TRANSMISSIONS • ELECTRONIC CONTROLS • EXPRESS JOYSTICK SYSTEM® • SAILDRIVES • EXPRESS POSITIONING® • ARNISON SURFACE DRIVES • MARINE CONTROL DRIVES • ROLLA PROPELLERS • BOW & STERN THRUSTERS • STEERING SYSTEMS • RUDDERS • TRIM TABS



Twin Disc, Incorporated  
Racine, Wisconsin 53403 USA  
Phone +1-262-638-4000  
Fax +1-262-638-4482  
[www.twindisc.com](http://www.twindisc.com)

*TD-Bulletin-MGX-6690SC  
© 2016, Twin Disc, Incorporated  
Printed in the USA - 2/2016*