

Maximum 1142 kW (1531 hp) @2300 RPM (PLEASURE CRAFT)

**STANDARD EQUIPMENT**

**MGX-5146SC**

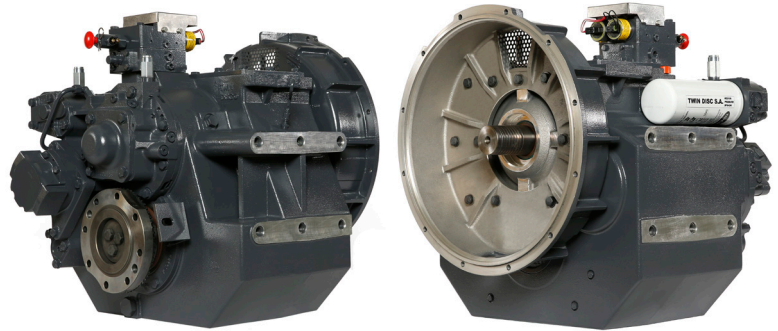
- Vertical offset, aluminum housing
- Electric GP-valve with manual override
- EC050 Profile module – interface for engagement signals
- Oil strainer and oil filter

**MGX-5146A**

- Vertical offset, aluminum housing
- 10° down angle on output shaft
- Electric GP-valve with manual override
- EC050 Profile module – interface for engagement signals
- Oil strainer and oil filter

**MGX-5146RV**

- Vertical offset, aluminum housing
- 10° down angle on output shaft
- Input flange GWB 587.50
- Electric GP-valve with manual override
- EC050 Profile module – interface for engagement signals
- Oil strainer and oil filter



**INPUT RATINGS - KILOWATS (KW) (HORSEPOWER (HP))\***

For service classification definitions and important notes refer to [www.twindisc.com](http://www.twindisc.com), the Twin Disc Marine Product Guide or contact Twin Disc directly.

**MGX-5146SC**

Reduction Ratios :1	Pleasure Craft @ 2300 RPM	Light Duty @ 2300 RPM	Intermediate Duty @ 2100 RPM	Medium Duty @ 1800 RPM	Continuous Duty @ 1800 RPM
1.03, 1.20, 1.33, 1.48, 1.57, 1.75, 1.96	1142 kW (1531 hp)	974 kW (1306 hp)	806 kW (1081 hp)	671 kW (900 hp)	612 kW (821 hp)
2.50	952 kW (1277 hp)	895 kW (1200 hp)	702 kW (941 hp)	552 kW (740 hp)	537 kW (720 hp)

**MGX-5146A & MGX-5146RV**

Reduction Ratios :1	Pleasure Craft @ 2300 RPM	Light Duty @ 2300 RPM	Intermediate Duty @ 2100 RPM	Medium Duty @ 1800 RPM	Continuous Duty @ 1800 RPM
1.26, 1.48, 1.75, 1.96	1142 kW (1531 hp)	974 kW (1306 hp)	806 kW (1081 hp)	671 kW (900 hp)	612 kW (821 hp)
2.50	1014 kW (1360 hp)	895 kW (1200 hp)	702 kW (941 hp)	552 kW (740 hp)	537 kW (720 hp)

\* Ratings shown for use with standard right-hand rotation engines. The maximum allowable rated engine speed is 2500 rpm.



Specifications subject to change without prior notice in the interest of continual product improvement. Contact your local Twin Disc representative for engineering specifications, Survey Society Approvals and Classifications.

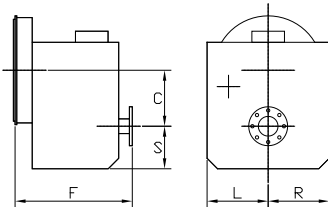
Scan QR code to see Twin Disc's entire Marine product line.



## OPTIONS

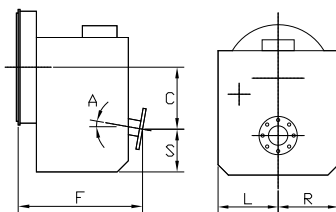
	MGX-5146SC	MGX-5146A	MGX-5146RV
SAE J617 housing no. 1	X	X	
SAE J617 housing no. 0	X	X	
Flexible coupling for 14" flywheel (SAE J620 size 355)	X	X	
Flexible coupling for 18" flywheel (SAE J620 size 460)	X	X	
Input flange size GWB 587.50 for freestanding installation	X	X	standard
Mechanical control valve	X	X	X
EC050 E-Troll module - interface for engagement & trolling signals	X	X	X
Harness with single point interface to Twin Disc			
EC300 control system	X	X	X
Oil cooler with thermostatic bypass valve	X	X	X
Companion flange/bolts set	X	X	X
Monitoring devices to customer's specification	X	X	X
Mounting brackets	X	X	X
Live PTO:			
SAE J744 size 82-2, 16-4 (SAE "A", 2-bolt, max. 58 Nm)	X	X	
SAE J744 size 101-2, 22-4 (SAE "B", 2-bolt, max. 197 Nm)	X	X	
SAE J744 size 101-2, 25-4 (SAE "B-B", 2-bolt, max. 337 Nm)	X	X	
SAE J744 size 127-4, 32-4 (SAE "C", 4-bolt, max. 592 Nm)	X	X	X
Hydraulic clutchable PTO:			
SAE J744 size 127-4, 32-4 (SAE "C", 4-bolt, max. 641 Nm)	X	X	X
Dry weight incl. SAE #1 housing and SAE 355 flexible coupling	344 kg	354 kg	318 kg

### MGX-5146SC



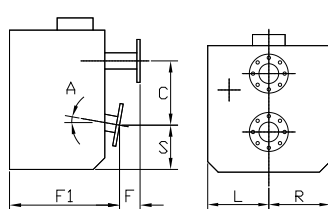
C	206 mm (8.12")
S	179 mm (7.04")
F	572 mm (22.52")
L	305 mm (12.01")
R	305 mm (12.01")

### MGX-5146A



C	264 mm (10.40")
S	156 mm (6.13")
F	555 mm (21.85")
L	305 mm (12.01")
R	305 mm (12.01")
A	10°

### MGX-5146RV



C	264 mm (10.40")
S	156 mm (6.13")
F	144 mm (5.68")
F1	456 mm (17.96")
L	305 mm (12.01")
R	305 mm (12.01")
A	10°

Twin Disc, Incorporated reminds users of these products that their safe operation depends on use in compliance with engineering information provided in our catalog. Users are also reminded that safe operation depends on proper installation, operation and routine maintenance and inspection under prevailing conditions. It is the responsibility of users (and not Twin Disc, Incorporated) to provide and install guards or safety devices which may be required by recognized safety standards or by the Occupational Safety and Health Act of 1970 and its subsequent provisions.

United States of America • Australia • Belgium • Canada • China • India • Italy • Singapore • Switzerland

For nearly a century, we've been making boats perform better and more reliably. From system-design consultation to application development to in-service support, Twin Disc provides fully integrated propulsion solutions that will optimize your craft's performance, reliability and safety over the years. Bring Twin Disc aboard early in the development process, and you'll enjoy a lifetime of enhanced operating value.

TRANSMISSIONS • ELECTRONIC CONTROLS • EXPRESS JOYSTICK SYSTEM® • SAILDRIVES • EXPRESS POSITIONING® • ARNISON SURFACE DRIVES • MARINE CONTROL DRIVES • ROLLA PROPELLERS • BOW & STERN THRUSTERS • STEERING SYSTEMS • RUDDERS • TRIM TABS



Twin Disc, Incorporated  
Racine, Wisconsin 53403 USA  
Phone +1-262-638-4000  
Fax +1-262-638-4482  
www.twindisc.com

TD-Bulletin-MGX-5146\_Series  
© 2016, Twin Disc, Incorporated  
Printed in the USA - 1/2016