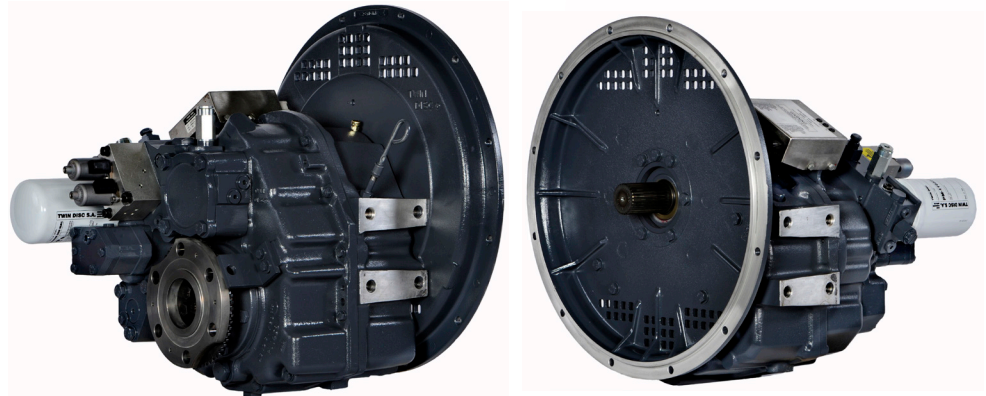


Maximum 425 kW (570 hp) @2500 RPM (PLEASURE CRAFT)

STANDARD EQUIPMENT

MGX-5065SC

Vertical offset, aluminum housing
 Electric GP-valve with manual override
 EC050 Profile module
 – interface for engagement signals
 Oil strainer and oil filter



MGX-5065A

Vertical offset, aluminum housing
 7° down angle on output shaft
 Electric GP-valve with manual override
 EC050 Profile module
 – interface for engagement signals
 Oil strainer and oil filter



INPUT RATINGS - KILOWATS (KW) (HORSEPOWER (HP))*

For service classification definitions and important notes refer to www.twindisc.com, the Twin Disc Marine Product Guide or contact Twin Disc directly.

Reduction Ratios :1	Pleasure Craft @ 2500 RPM	Light Duty @ 2300 RPM	Intermediate Duty @ 2100 RPM	Medium Duty @ 1800 RPM	Continuous Duty @ 1800 RPM
1.08, 1.26, 1.47 1.72, 2.04	425 kW (570 hp)	376 kW (504 hp)	279 kW (374 hp)	227 kW (304 hp)	216 kW (290 hp)
2.43	400 kW (536 hp)	351 kW (471 hp)	254 kW (341 hp)	208 kW (279 hp)	199 kW (267 hp)

* Ratings shown for use with standard right-hand rotation engines.
 The maximum allowable rated engine speed is 3600 rpm.



Specifications subject to change without prior notice in the interest of continual product improvement.
 Contact your local Twin Disc representative for engineering specifications, Survey Society Approvals
 and Classifications.

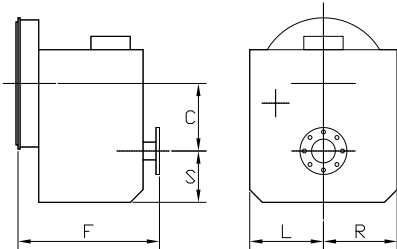
Scan QR code to see Twin Disc's entire Marine product line.



OPTIONS

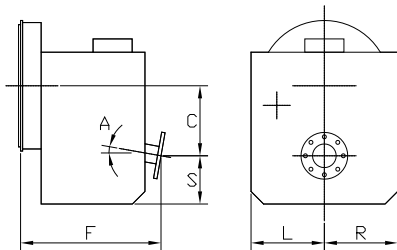
	MGX-5065SC	MGX-5065A
SAE J617 housing no. 1	X	X
SAE J617 housing no. 2	X	X
SAE J617 housing no. 3	X	X
Flexible coupling for 14" flywheel (SAE J620 size 355)	X	X
Flexible coupling for 11½" flywheel (SAE J620 size 290)	X	X
Input flange for freestanding installation	X	X
ECO50 E-Troll module – interface for engagement & trolling signals	X	X
Harness with single point interface to Twin Disc EC300 control system	X	X
Oil cooler with thermostatic bypass valve	X	X
Companion flange/ bolts set	X	X
Monitoring devices to customer's specification	X	X
Mounting brackets	X	X
Live PTO		
SAE J744 size 82-2, 16-4 (SAE "A", 2-bolt) – max. 58 Nm	X	X
SAE J744 size 101-2/4, 22-4 (SAE "B", 2/4-bolt) – max. 197 Nm	X	X
SAE J744 size 101-2/4, 25-4 (SAE "B-B", 2/4-bolt) – max. 337 Nm	X	X
Dry weight incl. SAE #2 housing and SAE 290 flexible coupling	111 kg	111 kg

MGX-5065SC



C	152 mm (6.00")
S	133 mm (5.22")
F	338 mm (13.30")
L	254 mm (10.00")
R	165 mm (6.50")

MGX-5065A



C	170 mm (6.69")
S	123 mm (4.84")
F	329 mm (12.97")
L	254 mm (10.00")
R	165 mm (6.50")
A	7°

For nearly a century, we've been making boats perform better and more reliably. From system-design consultation to application development to in-service support, Twin Disc provides fully integrated propulsion solutions that will optimize your craft's performance, reliability and safety over the years. Bring Twin Disc aboard early in the development process, and you'll enjoy a lifetime of enhanced operating value.

TRANSMISSIONS • ELECTRONIC CONTROLS • EXPRESS JOYSTICK SYSTEM® • SAILDRIVES • EXPRESS POSITIONING® • ARNESON SURFACE DRIVES • MARINE CONTROL DRIVES • ROLLA PROPELLERS • BOW & STERN THRUSTERS • STEERING SYSTEMS • RUDDERS • TRIM TABS



Twin Disc, Incorporated
Racine, Wisconsin 53403 USA
Phone +1-262-638-4000
Fax +1-262-638-4482
www.twindisc.com

Twin Disc, Incorporated reminds users of these products that their safe operation depends on use in compliance with engineering information provided in our catalog. Users are also reminded that safe operation depends on proper installation, operation and routine maintenance and inspection under prevailing conditions. It is the responsibility of users (and not Twin Disc, Incorporated) to provide and install guards or safety devices which may be required by recognized safety standards or by the Occupational Safety and Health Act of 1970 and its subsequent provisions.

United States of America • Australia • Belgium • Canada • China • India • Italy • Singapore • Switzerland

TD-Bulletin-MGX-5065_Series
© 2016, Twin Disc, Incorporated
Printed in the USA - 1/2016