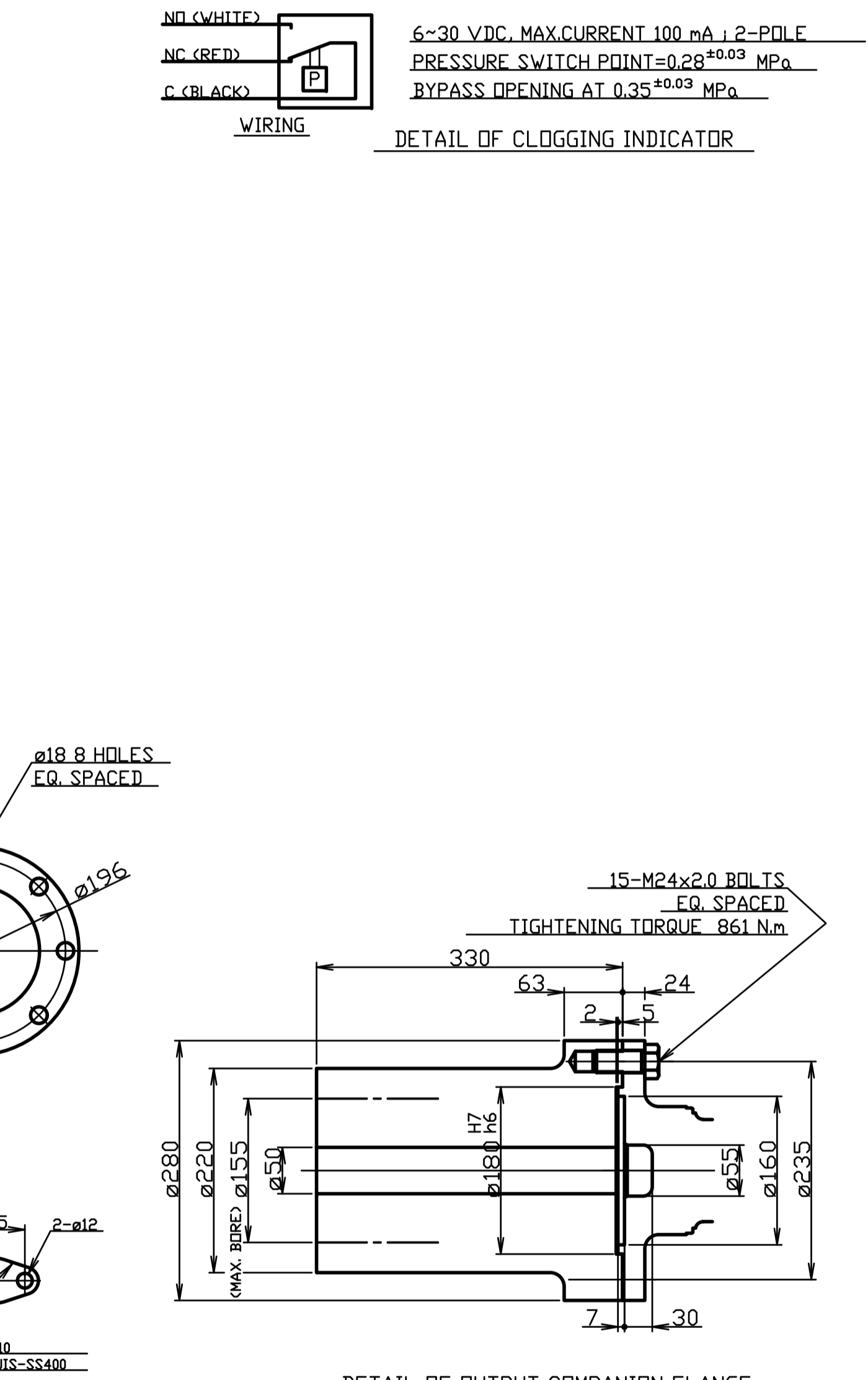
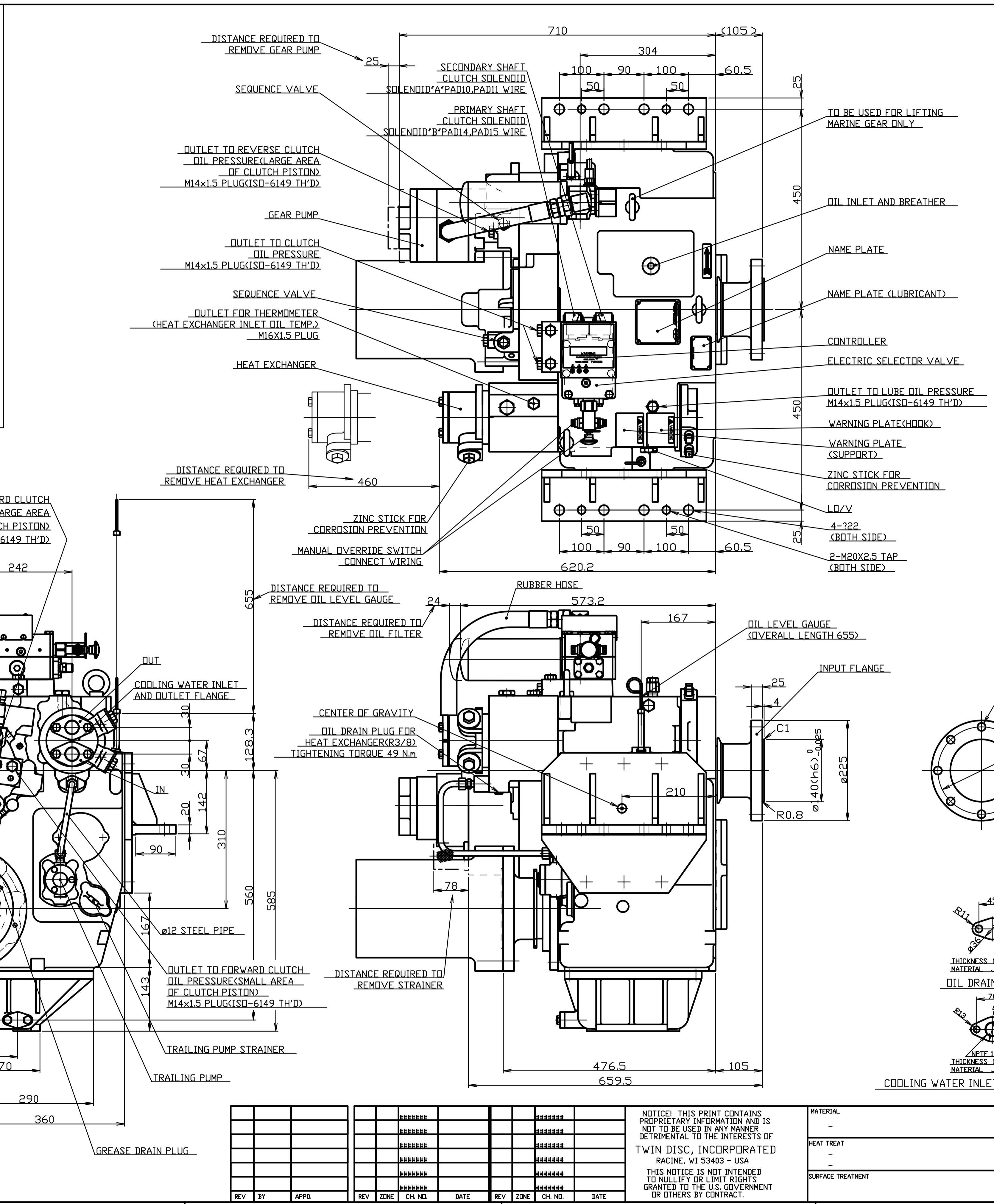
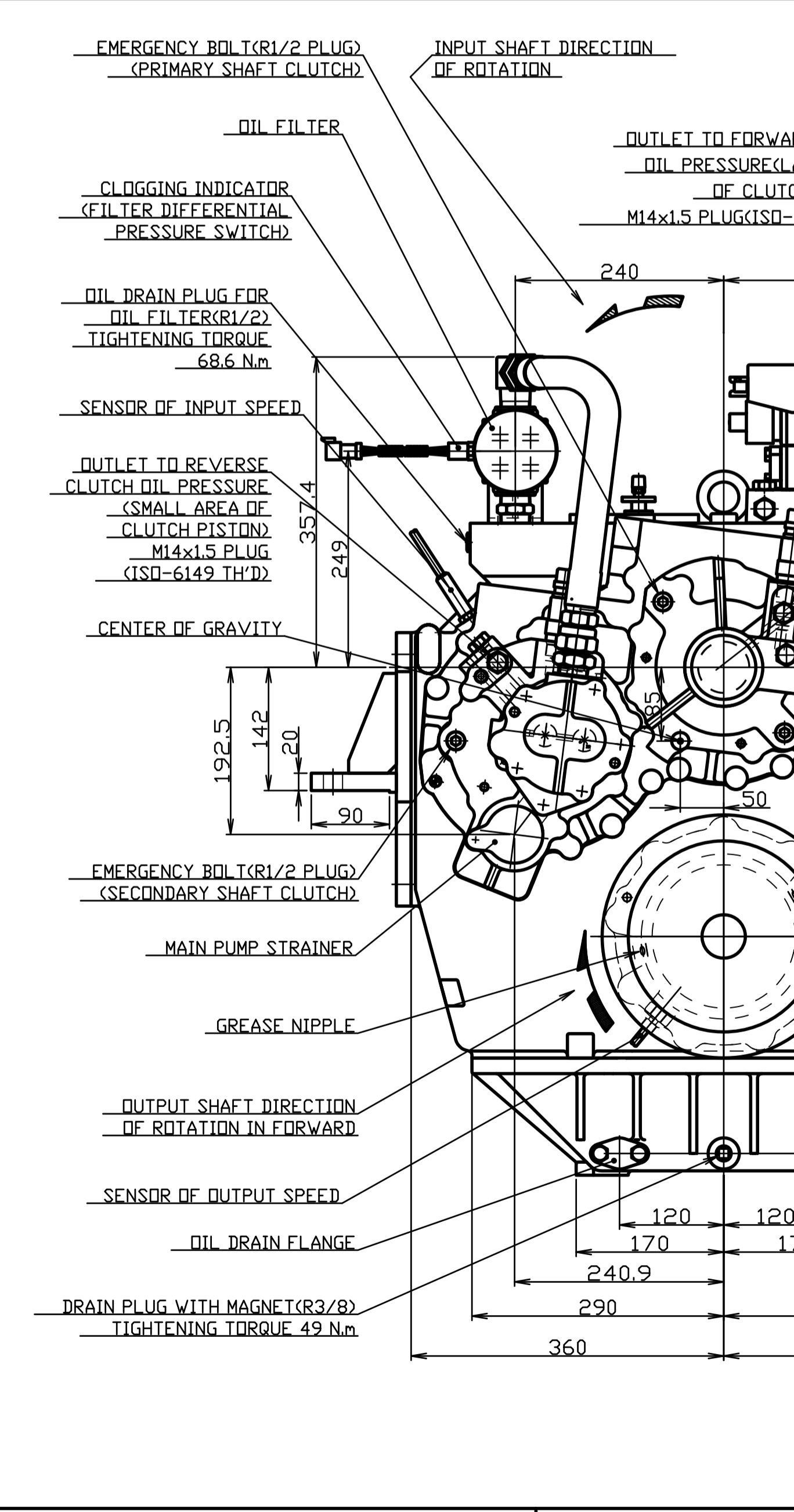
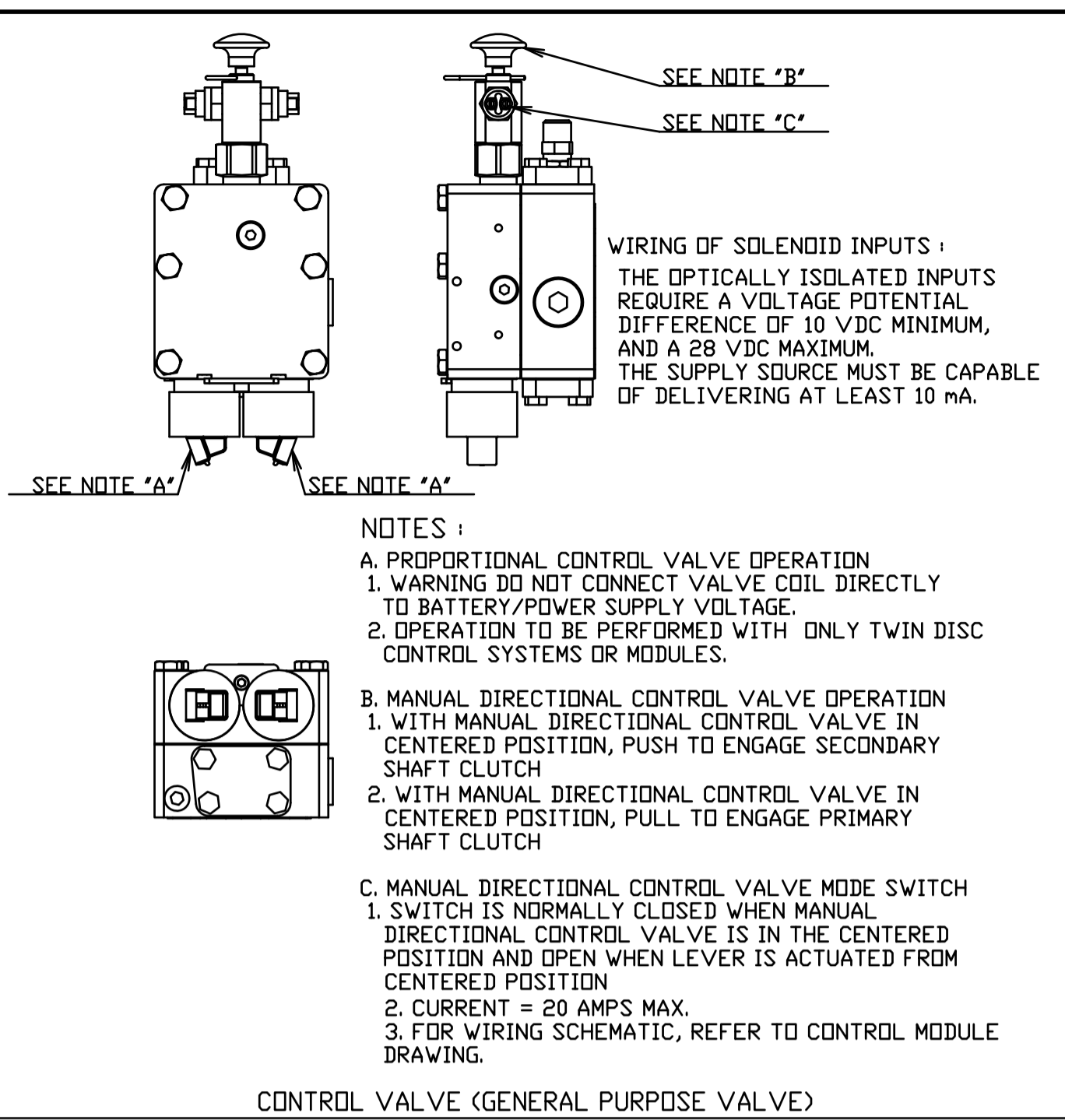
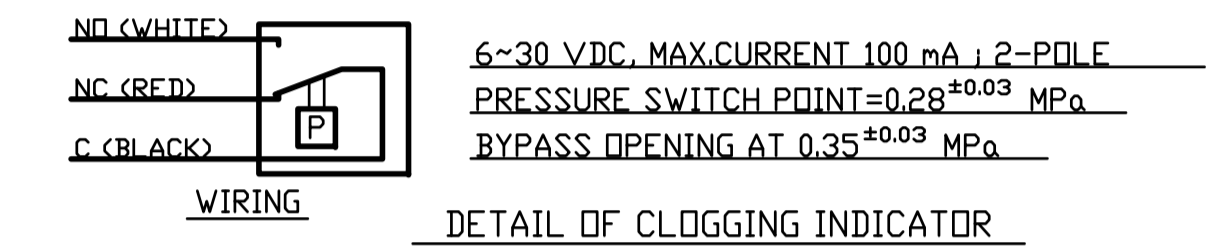


MGX-6598DC MARINE GEAR SPECIFICATIONS	
GEAR RATIO	2.46 3.03 3.48 3.93 4.43
MASS	TOTAL MASS (DRY) APPROX. 706 kg
	BASIC UNIT (DRY) APPROX. 545 kg
	INPUT COUPLING AND FLANGE 15 kg
	BRACKET 42 kg
COMPANION FLANGE 104 kg	
OIL QUANTITY	APPROX. 18 L
OIL PRESSURE	CLUTCH OIL 2.2~2.4 MPa AT RATED ENGINE SPEED
	LUBE OIL 0.4~0.6 MPa OIL TEMP. 65~70°C
OIL VISCOSITY	SAE #40 (MULTI-GRADE OIL IS NOT APPROVED)
OIL & GREASE CHANGE INTERVAL	THE FIRST OIL CHANGE AT 100 HOURS OF OPERATION AND SUBSEQUENTLY EVERY 1000 HOURS OF OPERATION
STRAINER	WIRE NETTING
SHIFTING RESTRICTION	SHIFT TO FORWARD OR REVERSE FROM NEUTRAL AND SHIFT ACROSS NEUTRAL SHALL BE MADE AT ENGINE SPEED LOWER THAN 50% OF THE RATED SPEED
HEAT EXCHANGER	WATER FLOW (RAW WATER) 80~85 L/min
	TEMPERATURE OF COOLING WATER 32°C MAX

SECTIONAL VIEW DWG NO. 7-40435-B
GEAR PUMP TOOTH WIDTH 44 mm



REV	BY	APPD.	REV	ZONE	CH. NO.	DATE	REV	ZONE	CH. NO.	DATE

NOTICE! THIS PRINT CONTAINS PROPRIETARY INFORMATION AND IS NOT TO BE USED IN ANY MANNER DETRIMENTAL TO THE INTERESTS OF TWIN DISC, INCORPORATED RACINE, WI 53403 - USA THIS NOTICE IS NOT INTENDED TO NULLIFY OR LIMIT RIGHTS GRANTED TO THE U.S. GOVERNMENT OR OTHERS BY CONTRACT.

MATERIAL	XXXX kg
HEAT TREAT	FIRST USE
SURFACE TREATMENT	ASSY. MODEL MGX-6598DC

DATE	110201	TWIN DISC INCORPORATED RACINE, WI 53403 - USA
SCALE	1:5	
DRN.	A.Kawakami	7-40434-B
CHK.	KS	
APPD.	KS	SHEET 1 OF 1