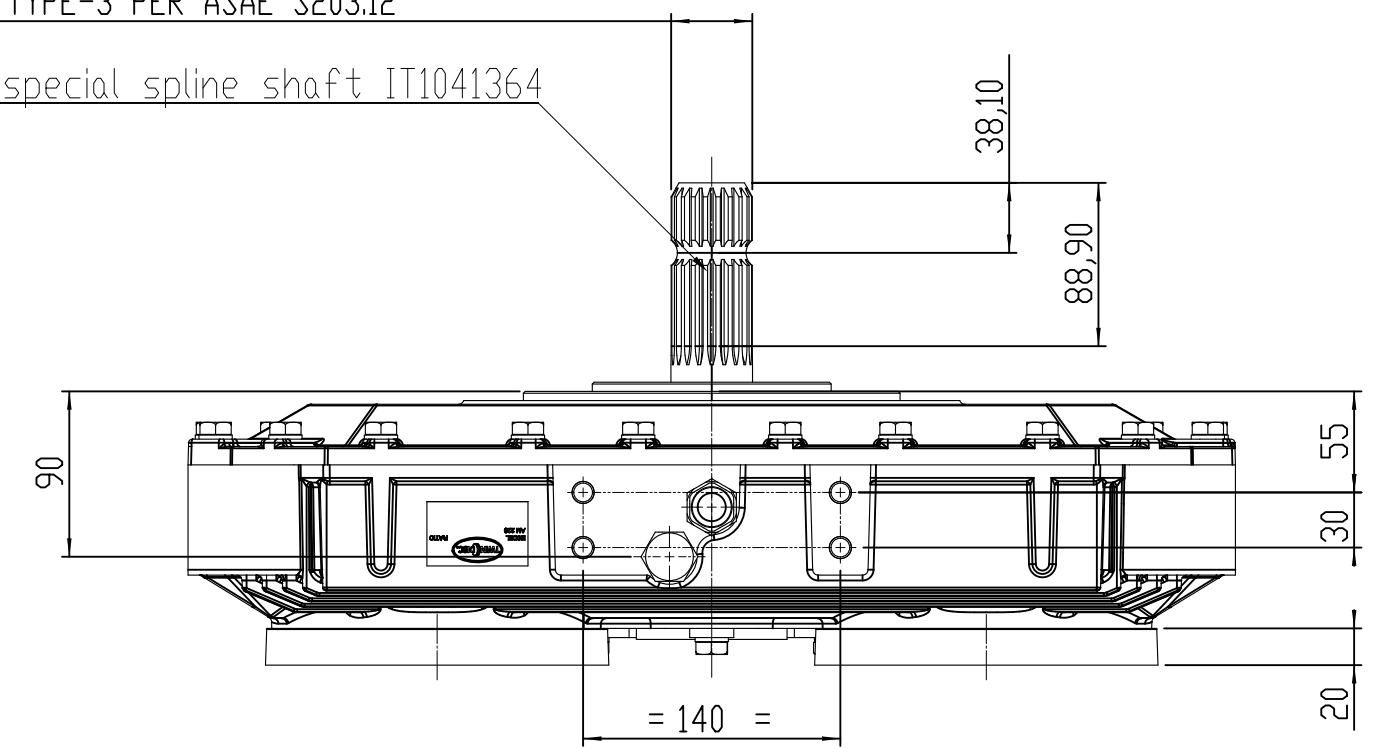


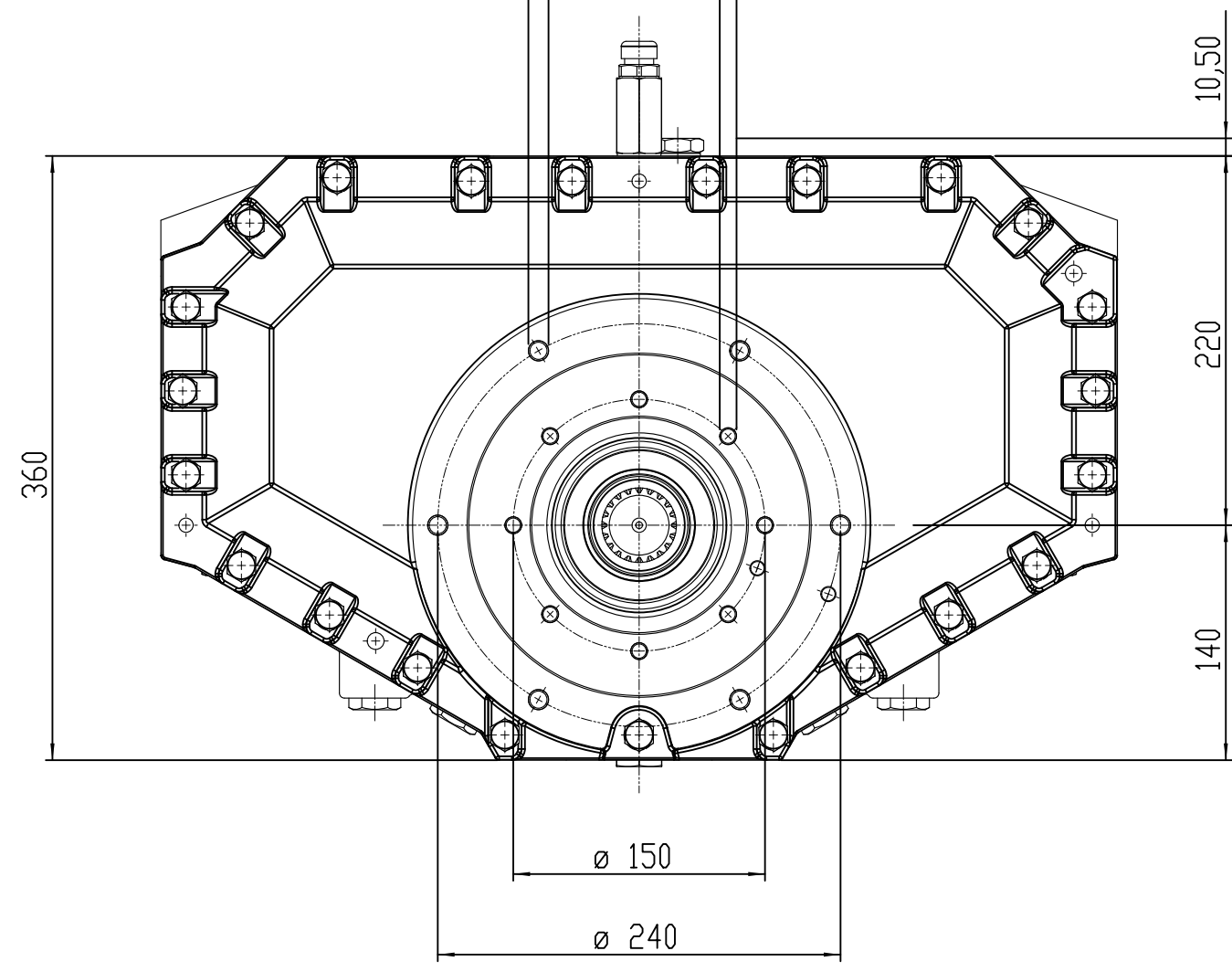
1-3/4" TYPE-3 PER ASAE S203.12

input special spline shaft IT1041364

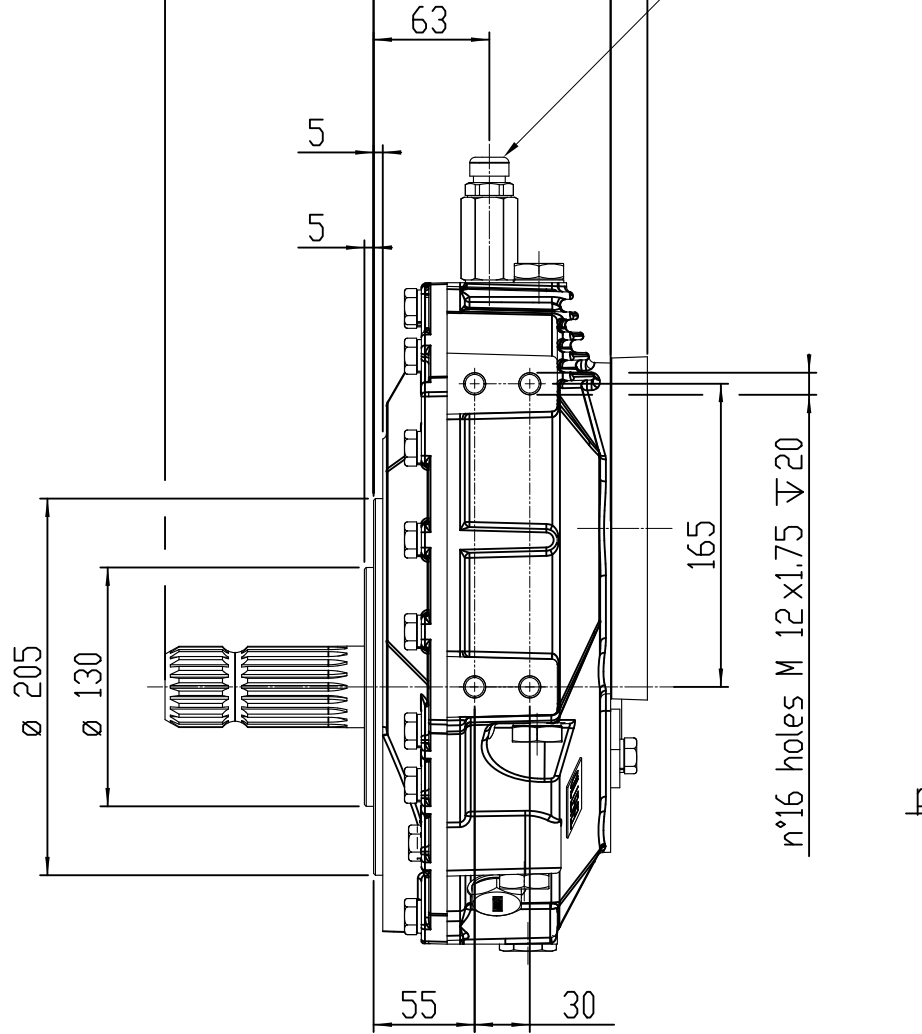


n°6 holes M 12x1.75 ∇ 20

n°8 holes M 10x1.5 ∇ 20

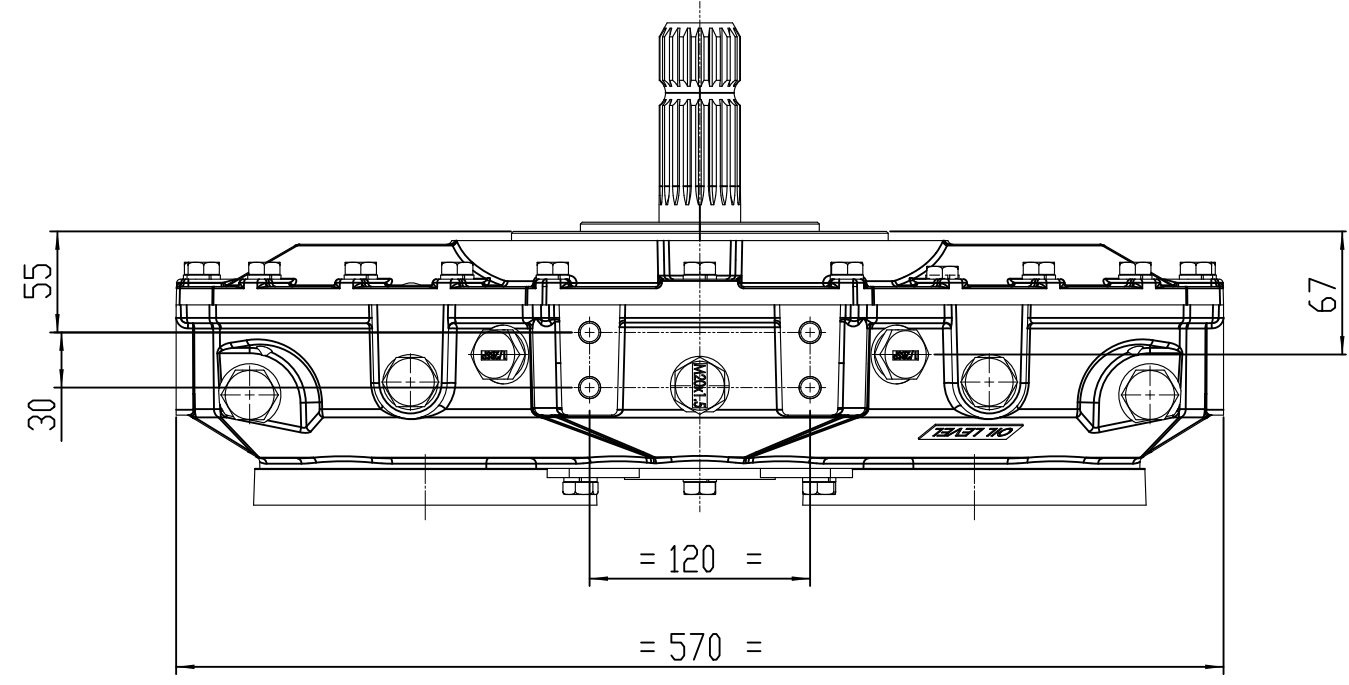
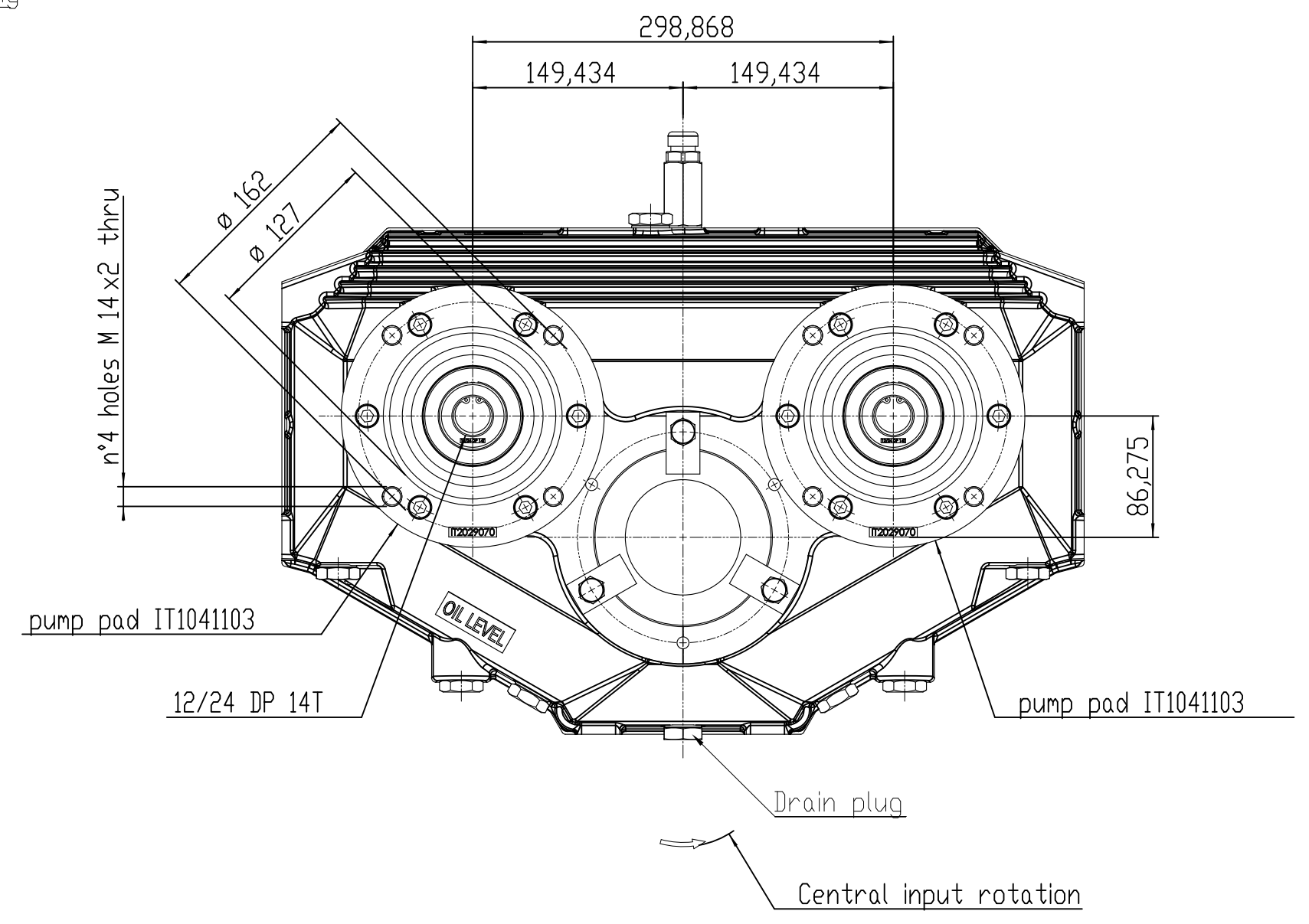


113,50 129 20 Breather plug



298,868

149,434 149,434



Special AM220 rotated 180°: ITBC0310007

Drawing and 3D model are valid for all ratios

FIRST USE ASSEMBLY:	WEIGHT:	kg	THIRD ANGLE PROJECTION	MATERIAL:	DATE:
FIRST USE MODEL:	kg-m ³			HEAT TREAT:	13-Jun-16
SIMILAR TO:			UNLESS OTHERWISE SPECIFIED MACHINED DIMENSIONS		SCALE:
			I ± 0,15		1:4
			II ± 0,25		DRAWN BY:
			III ± 0,13		Rosso
			ALL ANGULAR TOLERANCES ±1°		CHECKED BY:
			GEOMETRIC TOLERANCING PER ASME Y14.5M 1994		Guzzinati
<p>NOTICE: THIS PRINT CONTAINS PROPRIETARY INFORMATION AND IS NOT TO BE USED IN ANY MANNER OR FORNARL TO THE INTEREST OF TWIN DISC, INCORPORATED.</p> <p>THIS NOTICE IS NOT INTENDED TO WAIVE OR LIMIT RIGHTS GRANTED TO THE U.S. GOVERNMENT OR OTHERS BY CONTRACT.</p>				<p>DESCRIPTION: Installation pump drive, AM 220 BDM n°1029014L</p>	
<p>METRIC</p>		<p>APPROVED BY:</p> <p>Guzzinati</p>		<p>DWG SIZE: A2 SHEET: 1 OF 1 REV: -</p>	

-	NDWF-4000061	09-06-16
REV	CHANGE NO.	DATE
TWIN DISC SRL - ITALY		
1029015H		