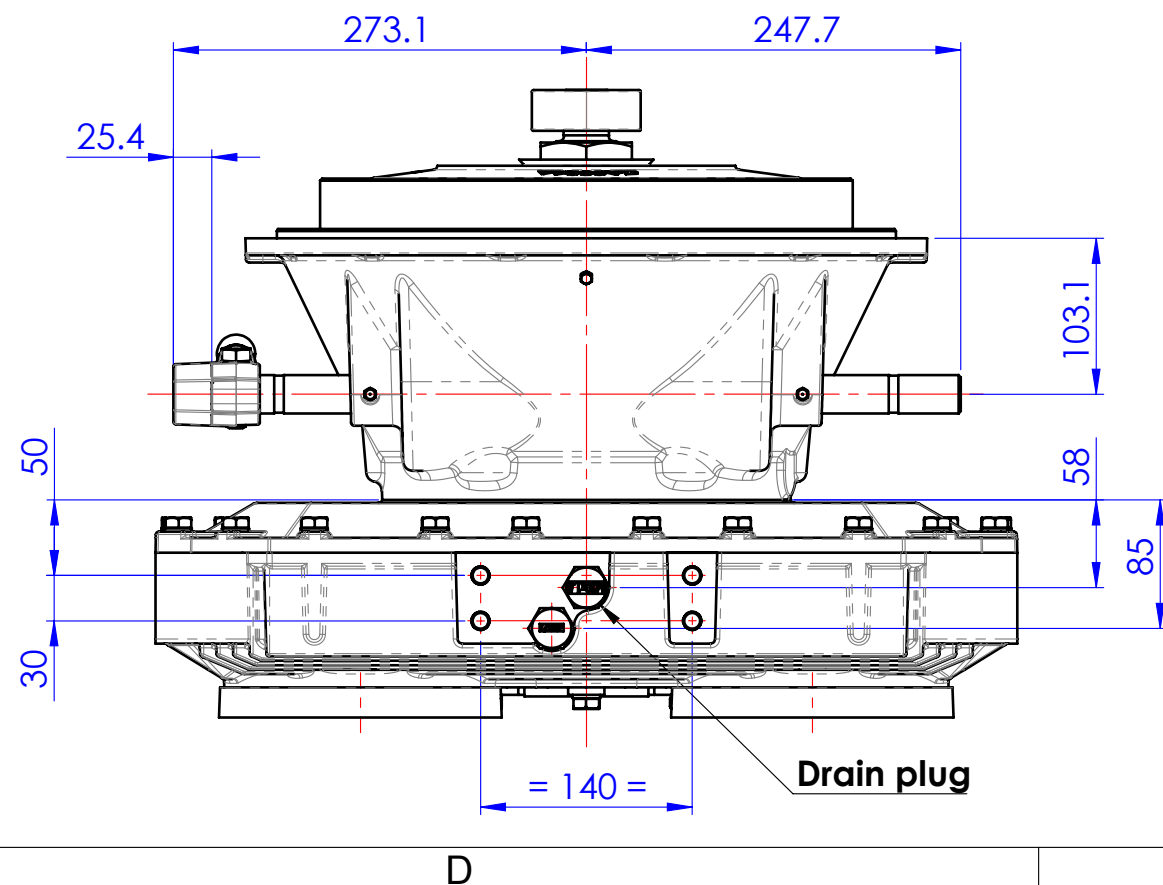
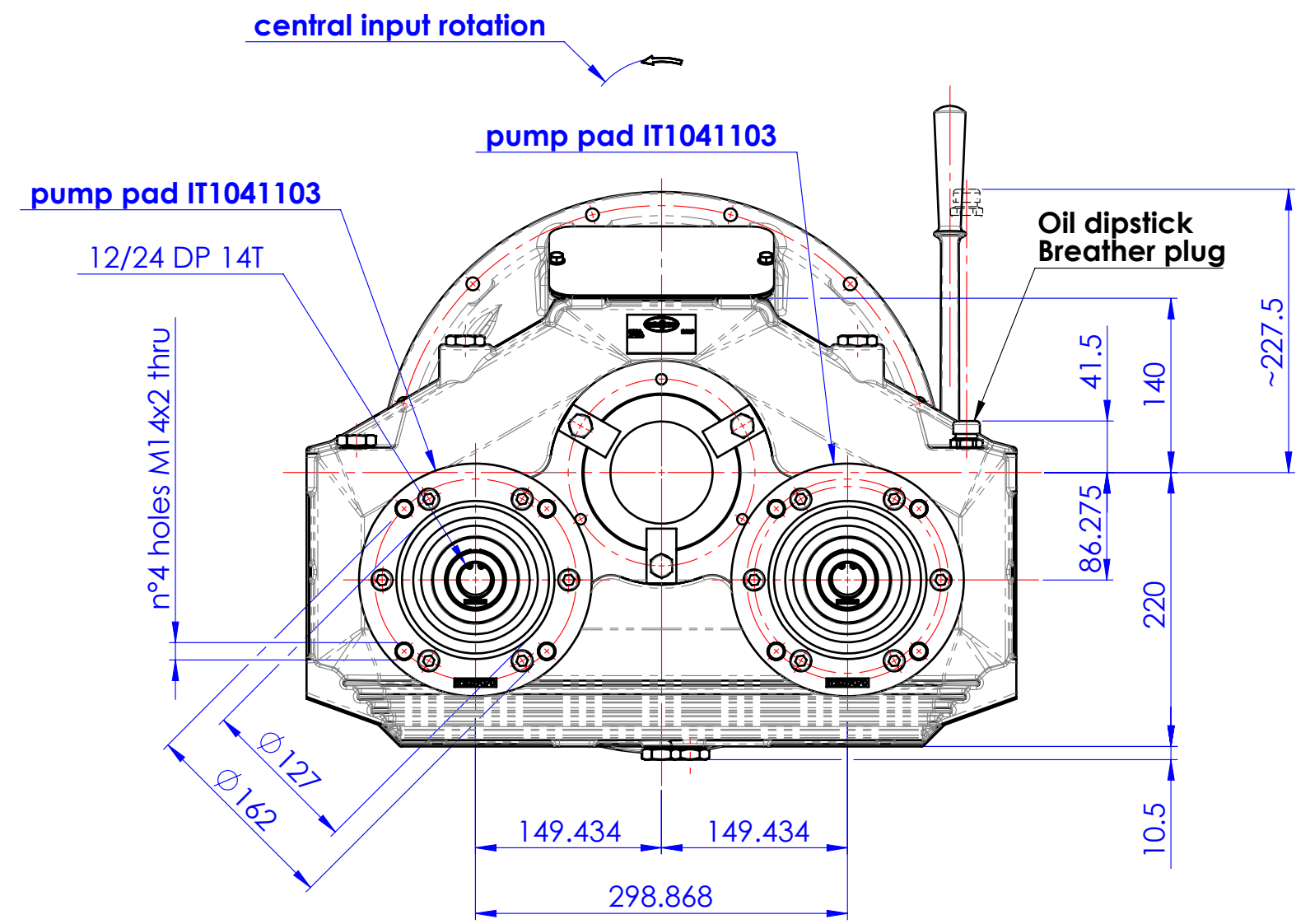
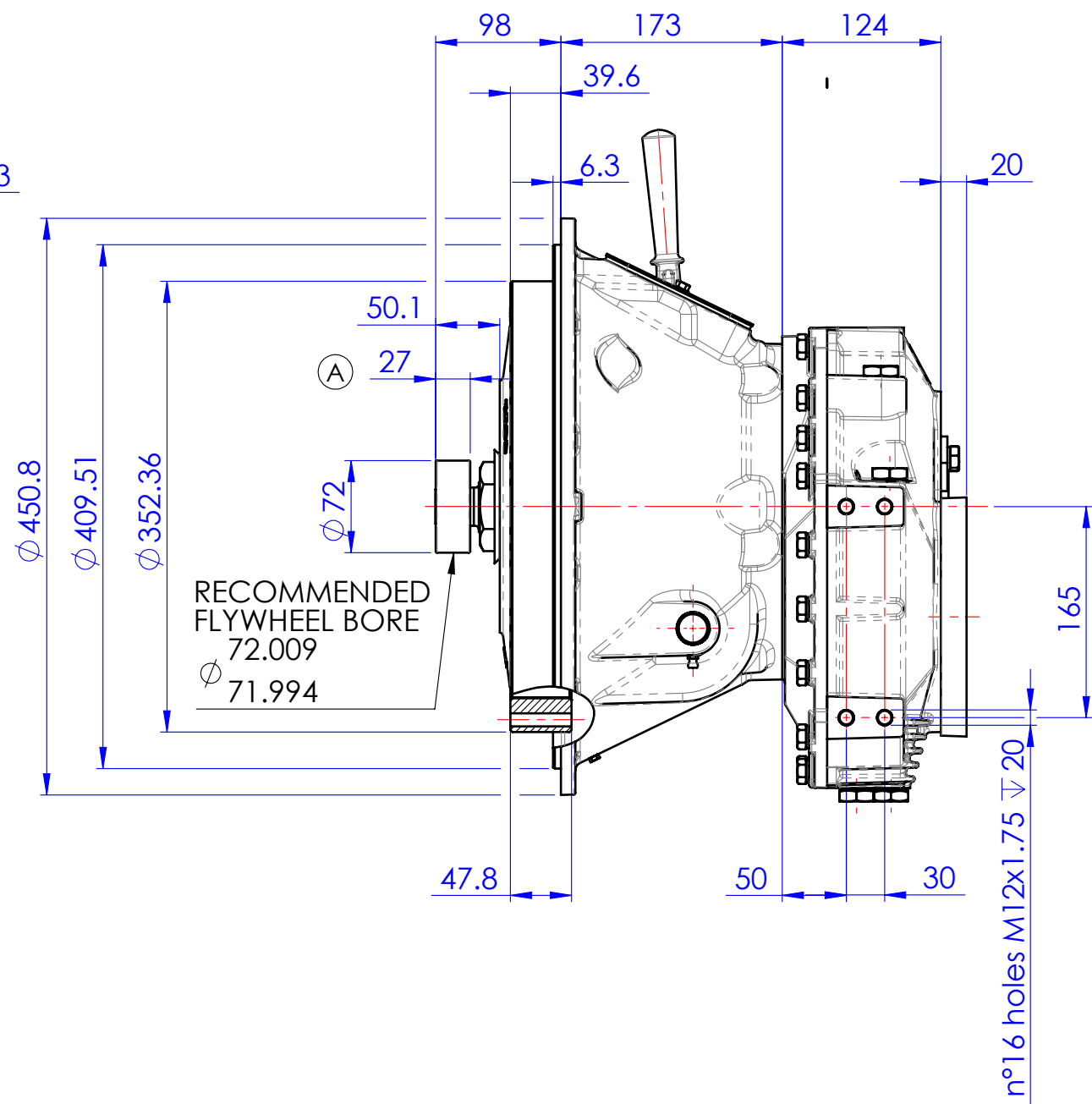
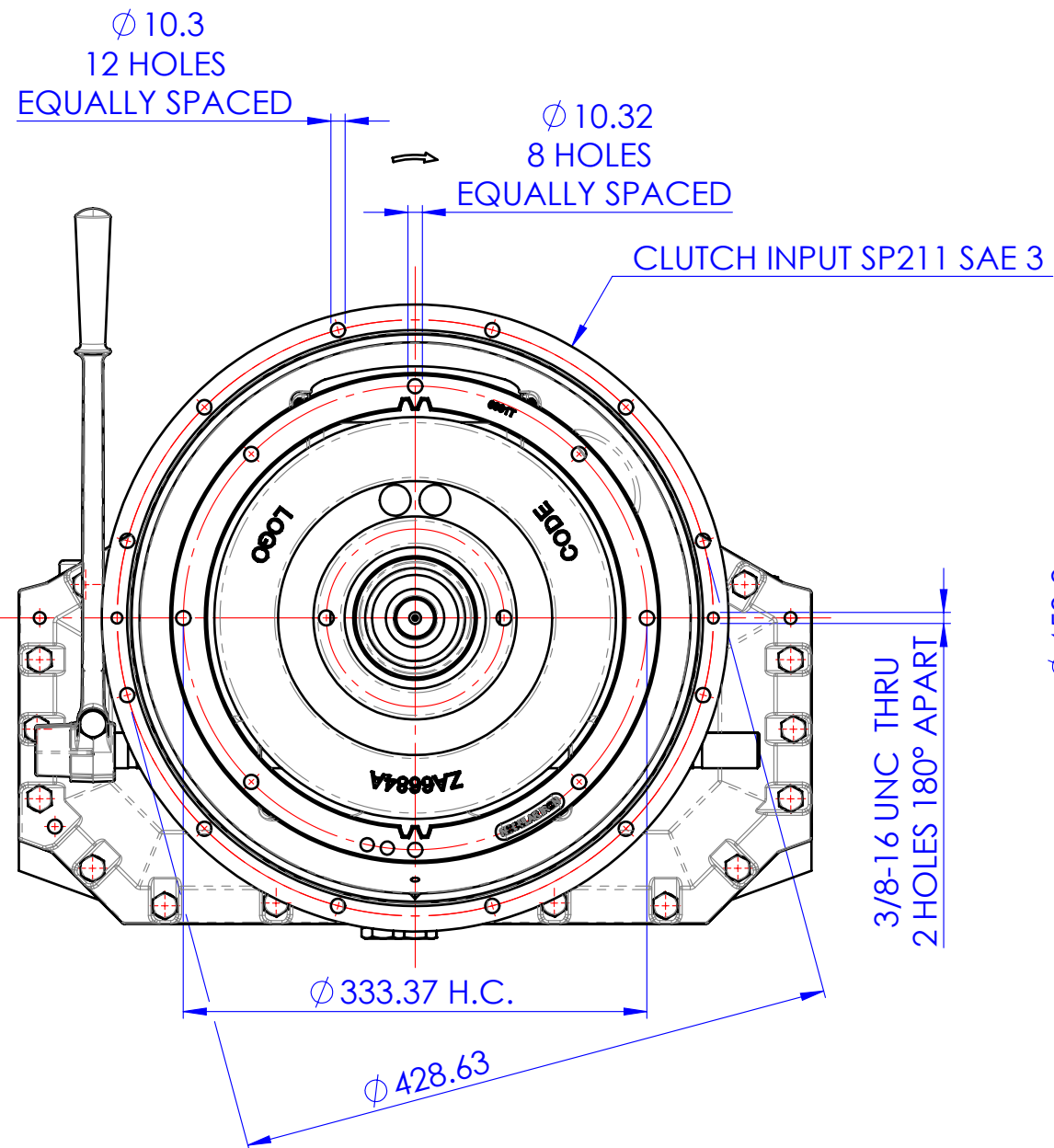
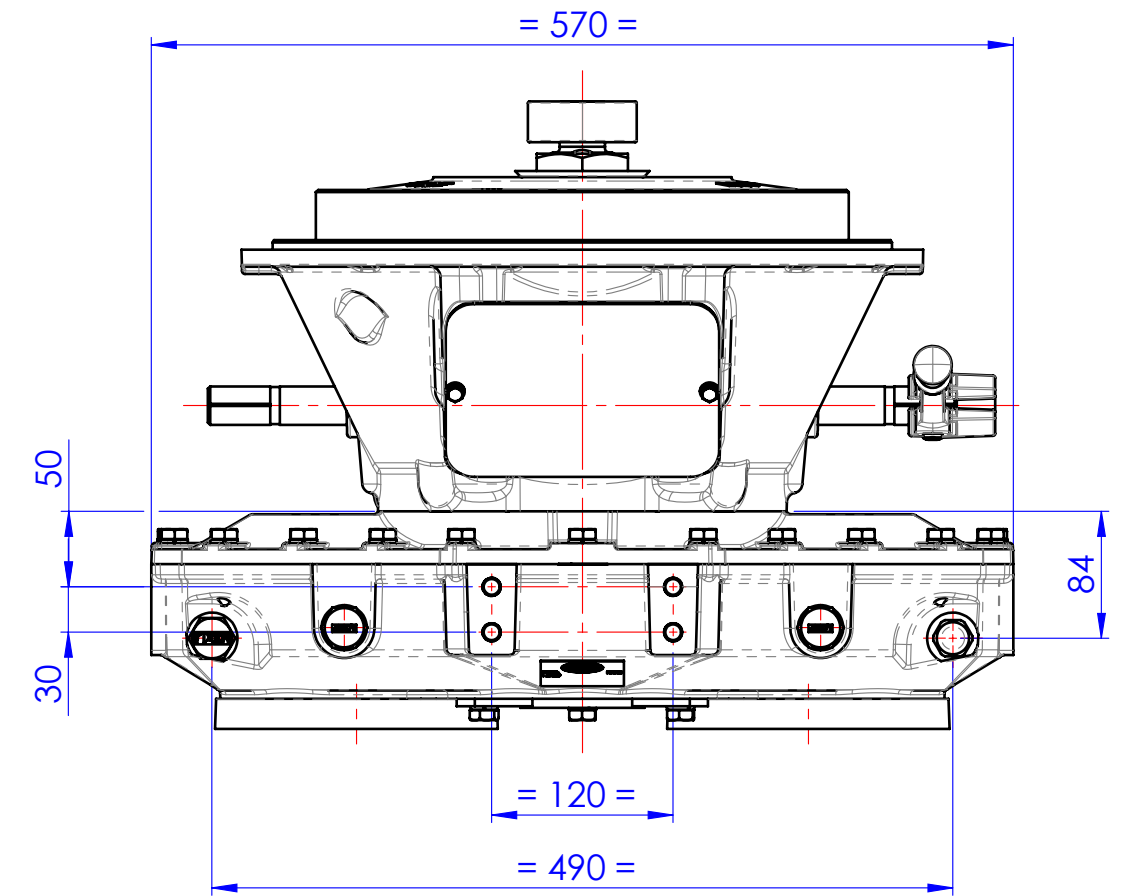
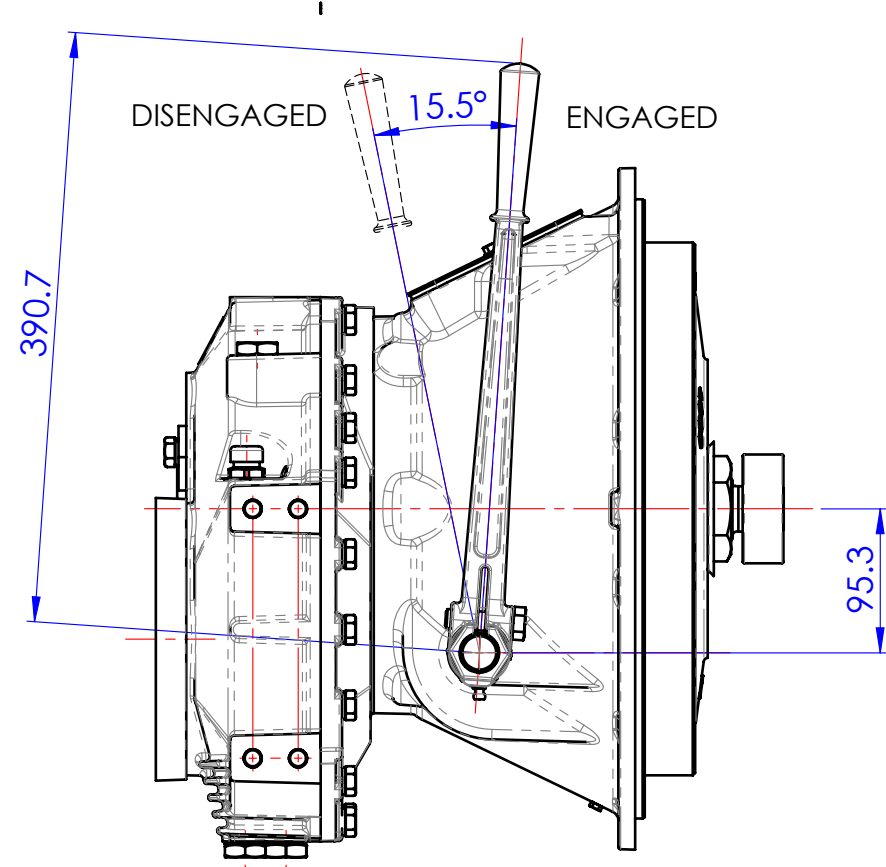


NOTE:  
TO INSURE NO PRELOAD ON SHIFTING MECHANISM, HAND LEVER POSITION IN THE ENGAGED POSITION SHOULD BE VERTICAL OR SLIGHTLY OVER CENTER OF DISENGAGED POSITION



GENERAL NOTES:

- a.) REFER TO BILL OF MATERIAL LIST WHEN ORDERING PARTS.
- b.) REFER TO CARE & OPERATION MANUAL FOR ADDITIONAL INFO..

DRAWING AND 3D MODEL ARE VALID FOR ALL RATIOS

PRIMO UTILIZZO MONTAGGIO/FIRST USE ASSEMBLY: PRIMO IMPIEGO MODELLO/FIRST USE MODEL: SIMILE A/SIMILAR TO:		MODELLO / MADE FROM:	MATERIALE / MATERIAL:	DATA / DATE: 07/29/2016 SCALA / SCALE: 1:5	A ECNWF-4000031 01/17/2018
<b>METRIC</b>		PESO / WEIGHT: WR <sup>2</sup> : kg kg-m <sup>2</sup>	TRATT. TERMICO / HEAT TREAT:	DIS / DRAWN: PR	MODIFICA / CHANGE NO.
NOTICE! THIS PRINT CONTAINS PROPRIETARY INFORMATION AND IS NOT TO BE USED IN ANY MANNER DETRIMENTAL TO THE INTEREST OF TWIN DISC, INCORPORATED. THIS NOTICE IS NOT INTENDED TO NULLIFY OR LIMIT RIGHTS GRANTED TO THE U.S. GOVERNMENT OR OTHERS BY CONTRACT.		THIRD ANGLE PROJECTION	TRATT. SUP. / SURFACE TREATMENT:	VERIF. / CHECK: GG	DATA / DATE
DESCRIZIONE: <b>INGOMBRO AM220 BOM 1029014K</b>		DESCRIZIONE: <b>INSTALLATION PUMP DRIVE AM220 BOM 1029014K</b>	DESCRIZIONE: <b>INSTALLATION PUMP DRIVE AM220 BOM 1029014K</b>	APPROVATO/APP: DAJ	DECIMA - ITALY
FORMATO / SIZE: A2		FOGLIO / SHEET: 1 OF 1		INDIC MODIF / REV: A	<b>1029015G</b>