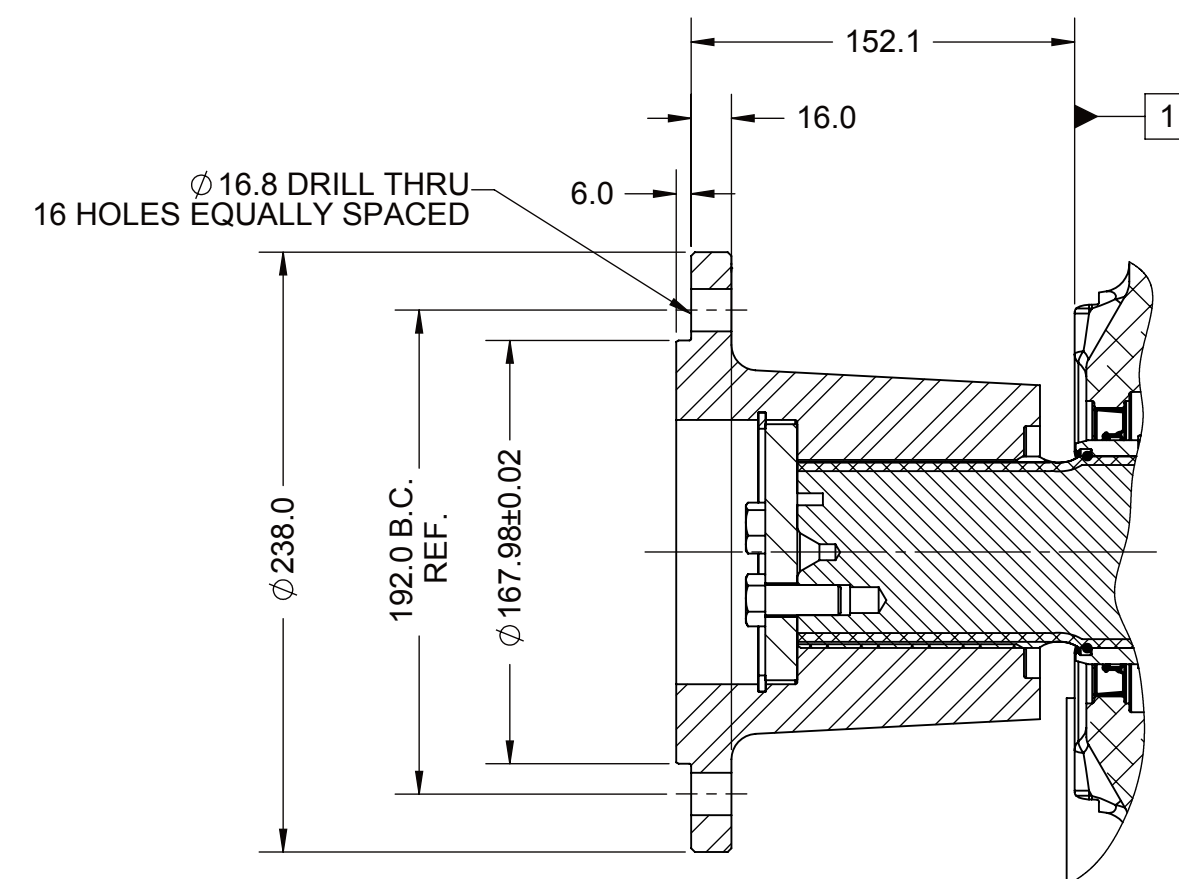


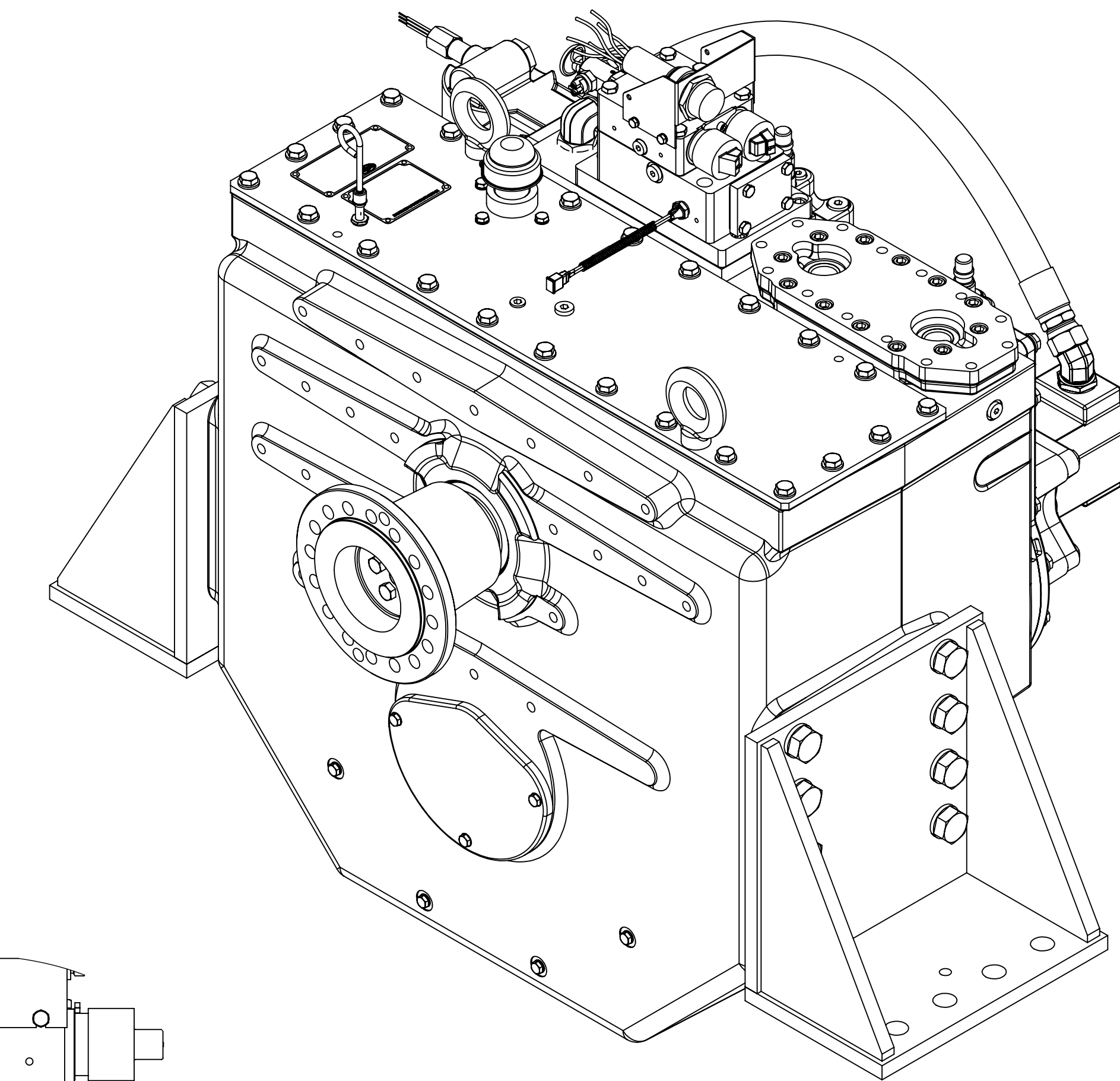
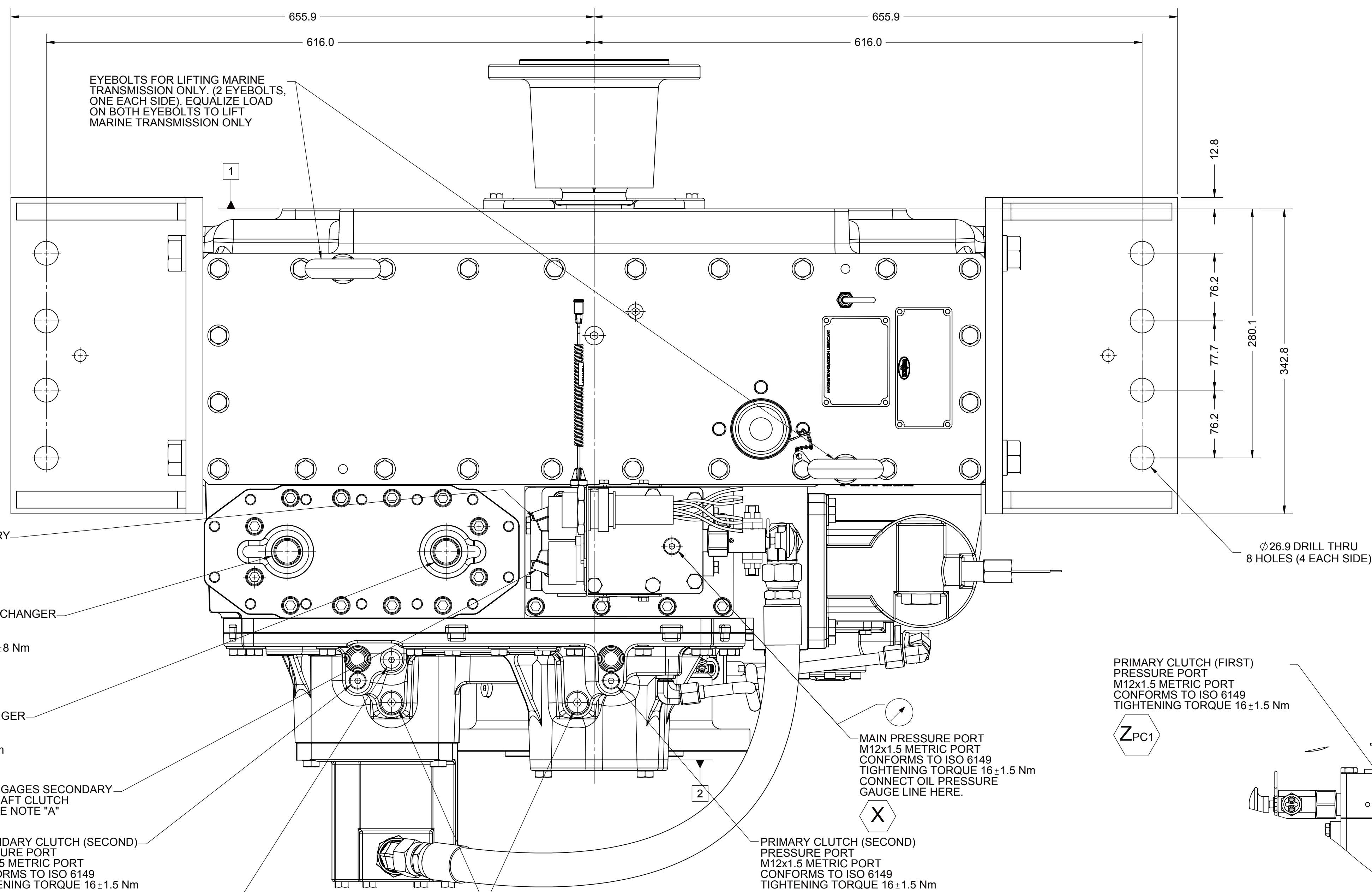
- 1 INPUT GROUP REFERENCE PLANE
- 2 PTO ADAPTER MOUNTING FACE
- 3 LEFT MOUNTING BRACKET FACE
- 4 RIGHT MOUNTING BRACKET FACE

- NOTES:
- A. PROPORTIONAL CONTROL VALVE OPERATION
1. WARNING DO NOT CONNECT VALVE COIL DIRECTLY TO BATTERY POWER SUPPLY VOLTAGE.
 2. OPERATION TO BE PERFORMED WITH ONLY TWIN DISC CONTROL SYSTEMS OR MODULES.
- B. MANUAL DIRECTIONAL CONTROL VALVE OPERATION
1. WITH MANUAL DIRECTIONAL CONTROL VALVE IN CENTERED POSITION, PUSH TO ENGAGE SECONDARY CLUTCH.
 2. WITH MANUAL DIRECTIONAL CONTROL VALVE IN CENTERED POSITION, PULL TO ENGAGE PRIMARY CLUTCH.
- C. MANUAL DIRECTIONAL CONTROL VALVE MODE SWITCH
1. SWITCH IS NORMALLY CLOSED WHEN MANUAL DIRECTIONAL CONTROL VALVE IS IN THE CENTERED POSITION AND OPEN WHEN LEVER IS ACTUATED FROM CENTERED POSITION.
 2. CURRENT = 20 AMP MAX.
 3. FOR WIRING SCHEMATIC, REFER TO CONTROL MODULE DRAWING.
- D. REFERENCE S930 FOR TWIN DISC REQUIREMENTS FOR PRESSURE AND TEMPERATURE ALARM LEVELS.

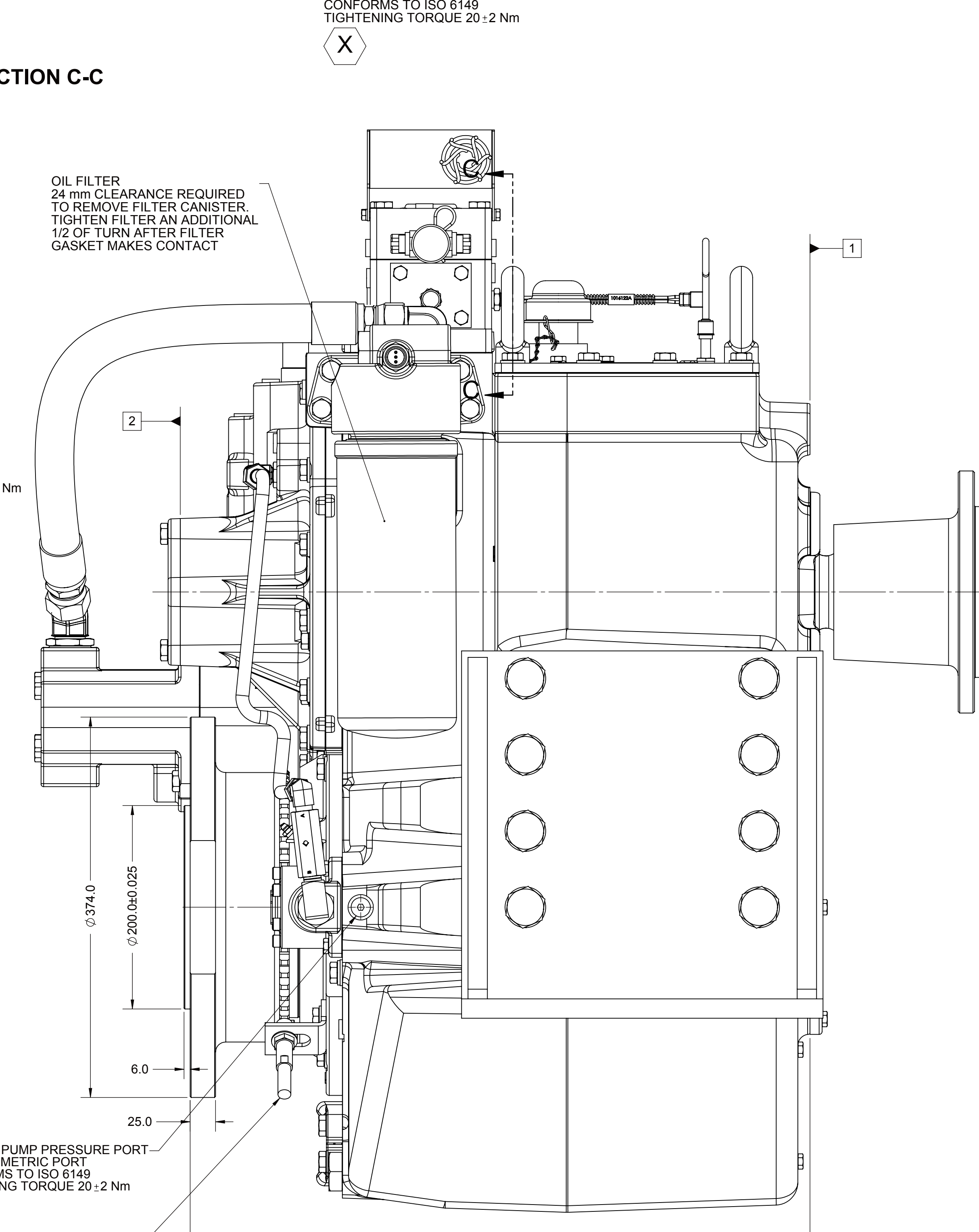
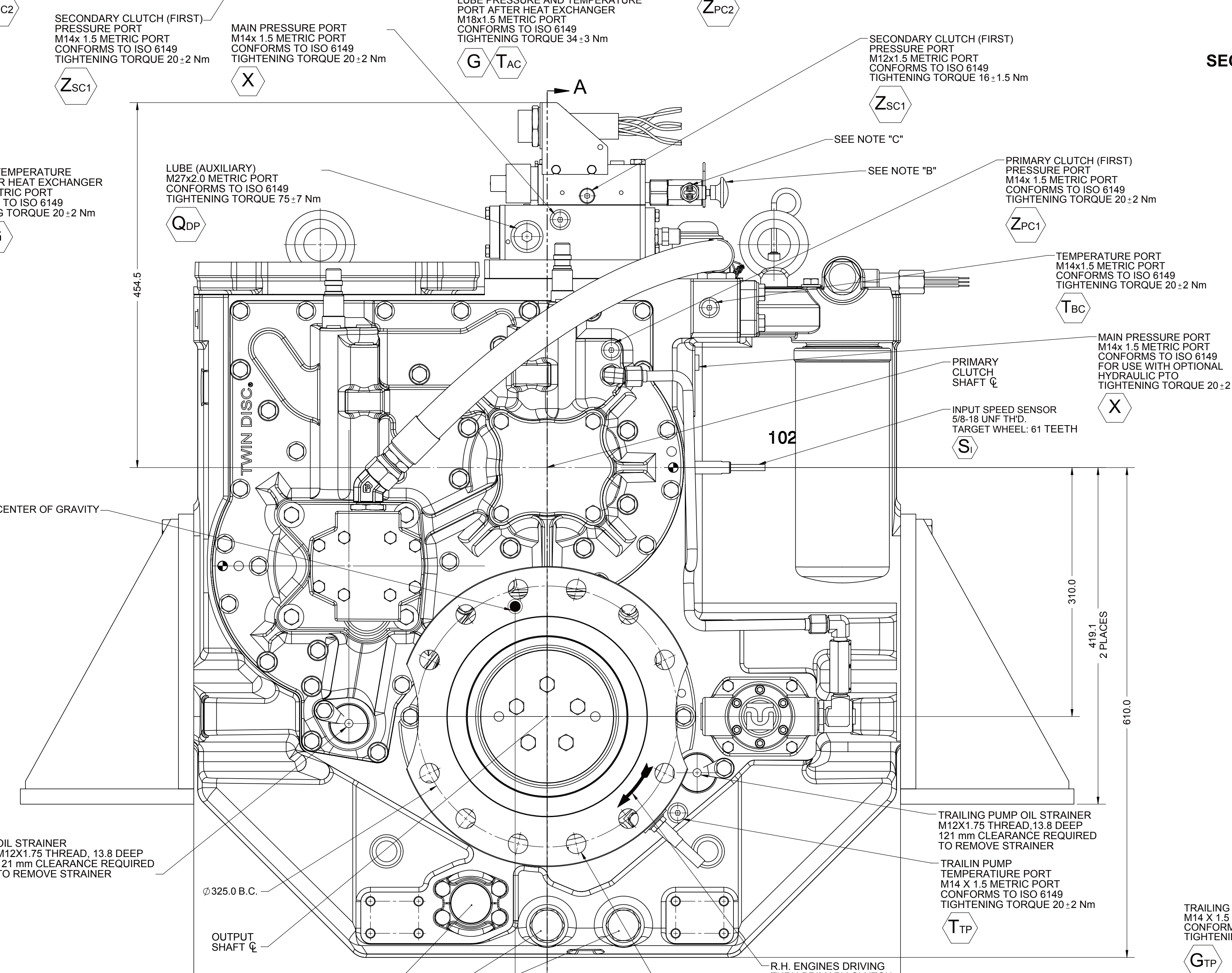
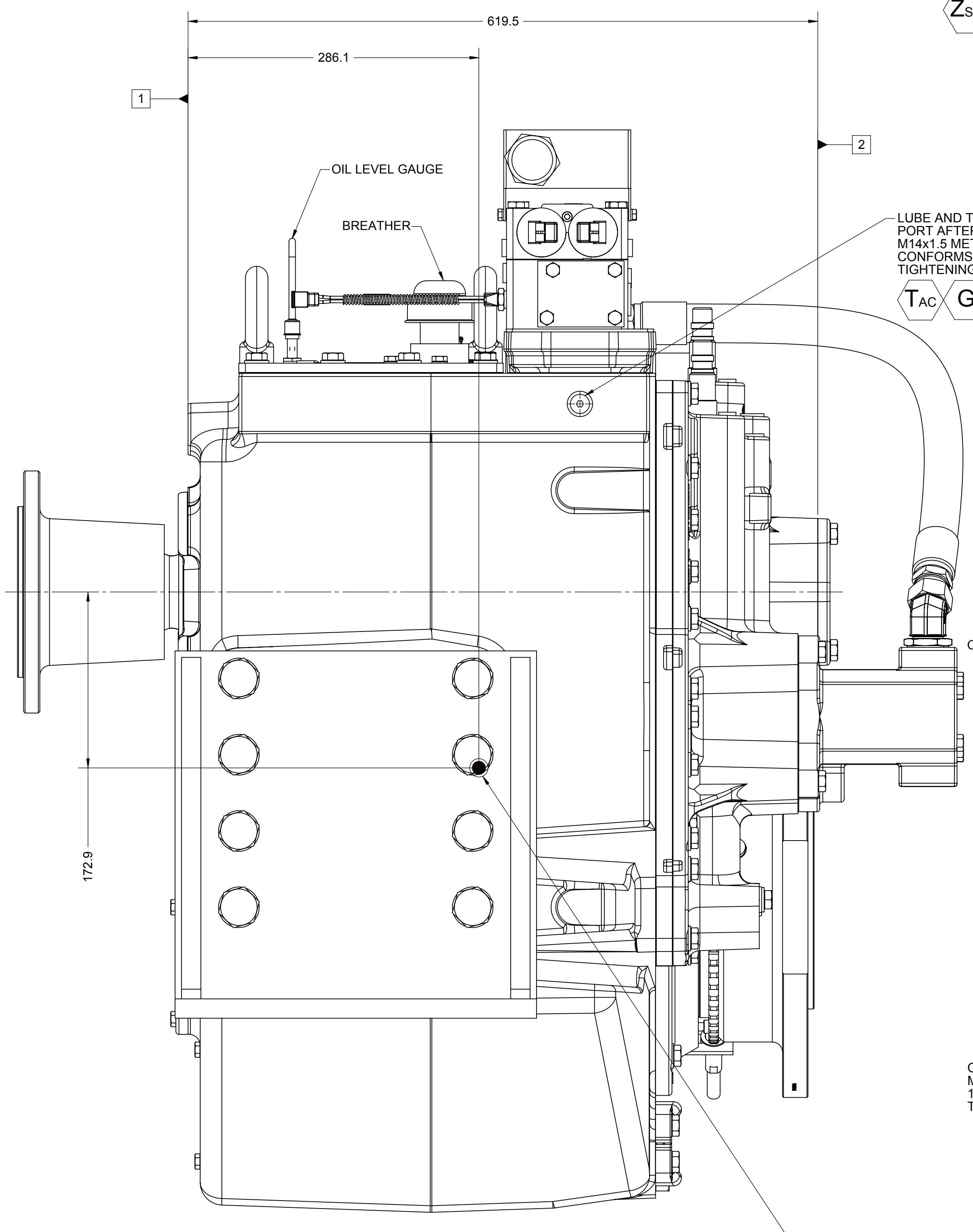
ALL POINTS AVAILABLE FOR TESTING ARE CODED



SECTION A-A



SECTION C-C



- EQUIPMENT SHOWN:
- MGX-6650SC PER T002046 ASSEMBLY
 - 1028325 FREESTANDING INPUT FLANGE
 - EC300 WIRING HARNESS
 - DITCH PLATE FOR CUSTOMER HEAT EXCHANGER
 - 1016428AU MOUNTING BRACKET
 - TRAILING PUMP

<p>FIRST USE ASSEMBLY: 1002046</p> <p>FIRST USE MODEL: MGX-6650SC</p> <p>REV: 1009-88</p> <p>SCALE: 1-3</p> <p>DATE: 02/03/2014</p> <p>PROJECT: 1028862A</p> <p>CHECKED BY: ALC</p> <p>APPROVED BY: ALC</p>	<p>THIRD ANGLE PROJECTION</p> <p>MATERIAL: 304 STAINLESS STEEL</p> <p>HEAT TREAT: NONE</p> <p>FINISH: POLISHED</p> <p>DESCRIPTION: INSTALLATION MGX-6650SC</p>	<p>DATE: 02/03/2014</p> <p>SCALE: 1-3</p> <p>PROJECT: 1028862A</p> <p>CHECKED BY: ALC</p> <p>APPROVED BY: ALC</p> <p>SHEET: 1 OF 1</p>
---	--	--