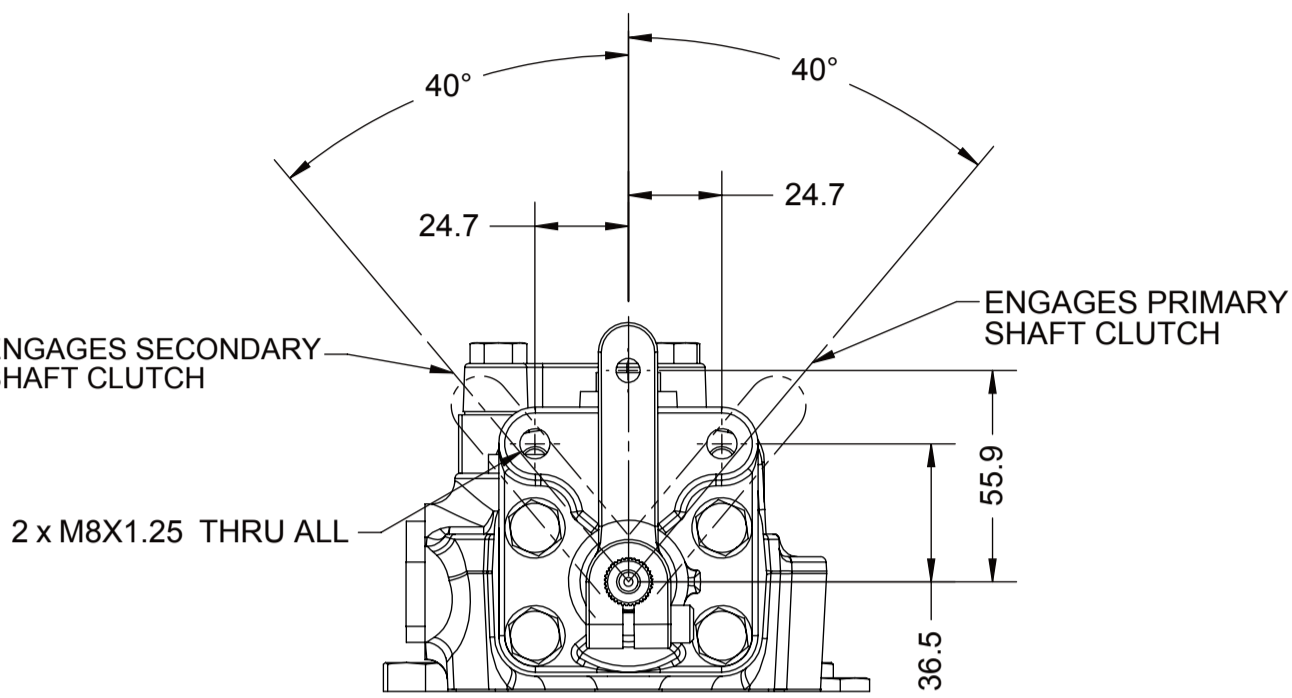


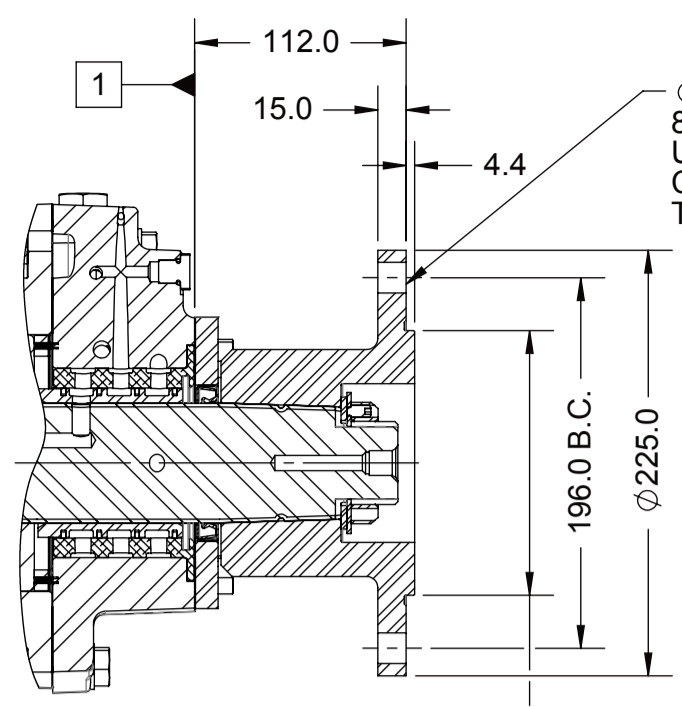
- 1 INPUT GROUP REFERENCE PLANE
- 2 PTO GROUP MOUNTING FACE
- 3 LEFT MOUNTING BRACKET FACE
- 4 RIGHT MOUNTING BRACKET FACE

UNLESS OTHERWISE SPECIFIED FASTENER TORQUE VALUES AS PER S574 STANDARD

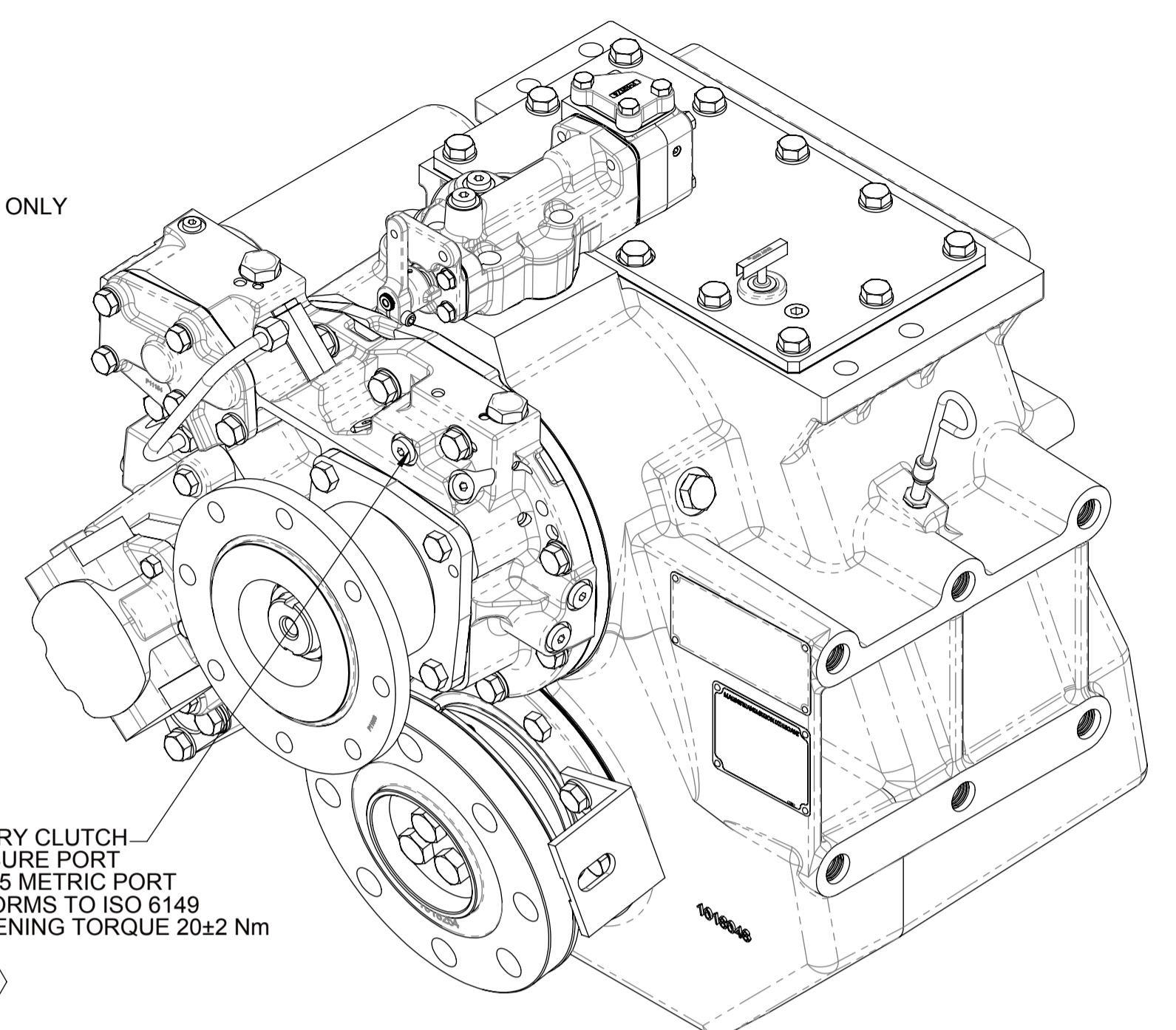
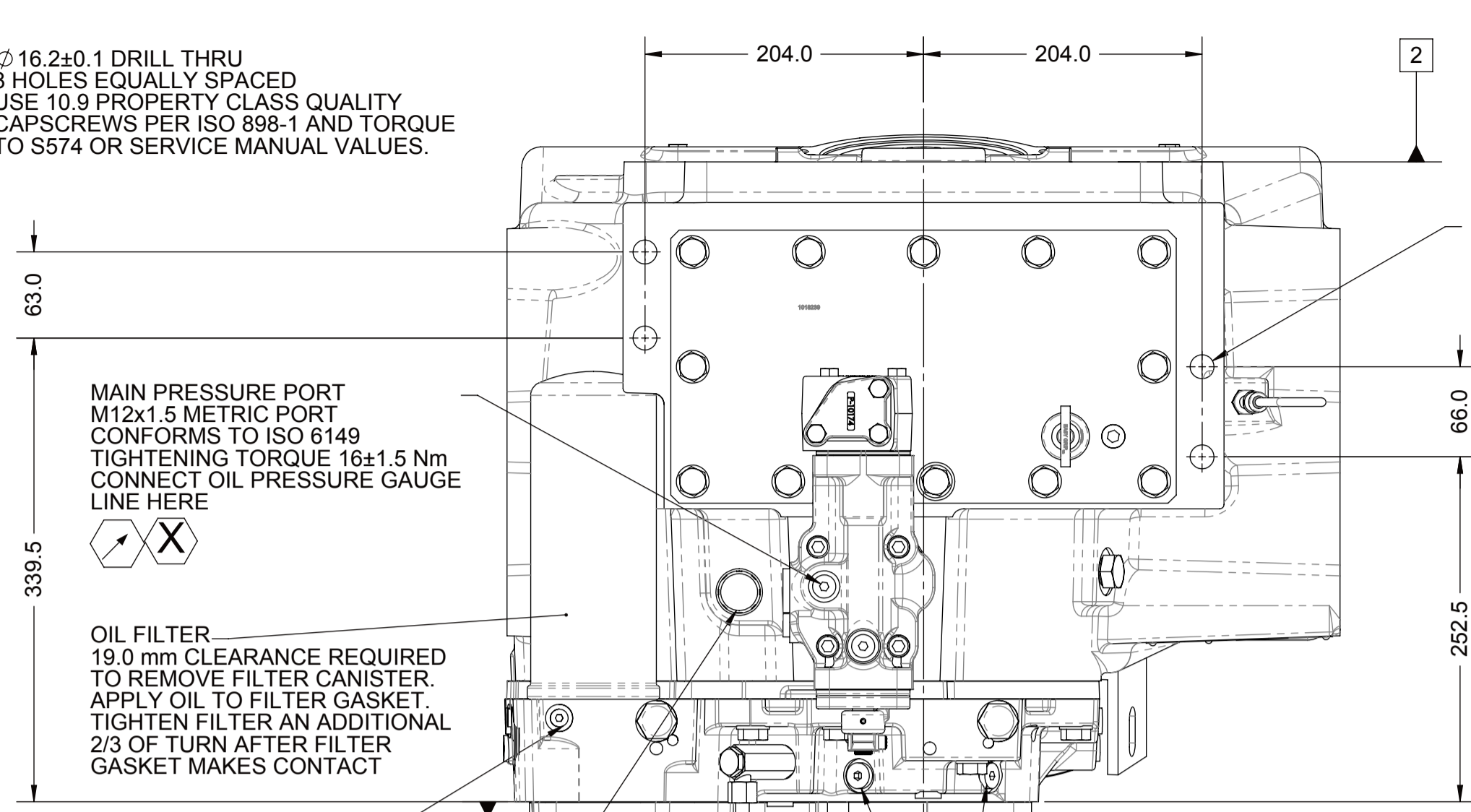
ALL POINTS AVAILABLE FOR TESTING ARE CODED



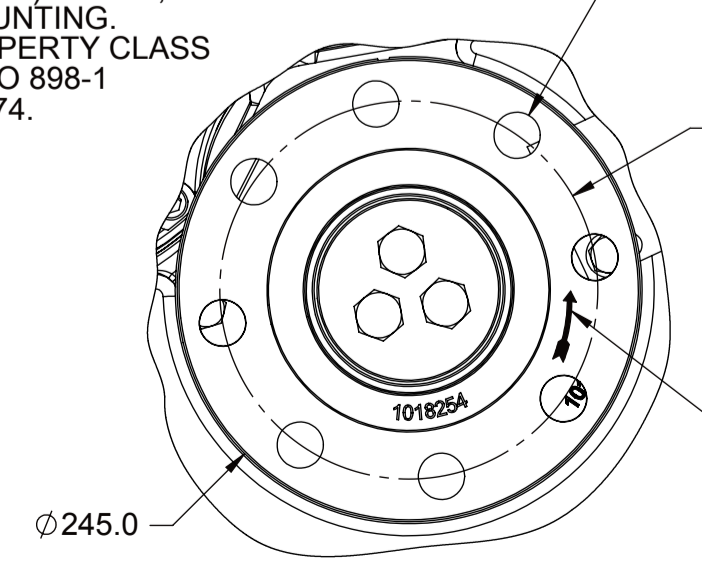
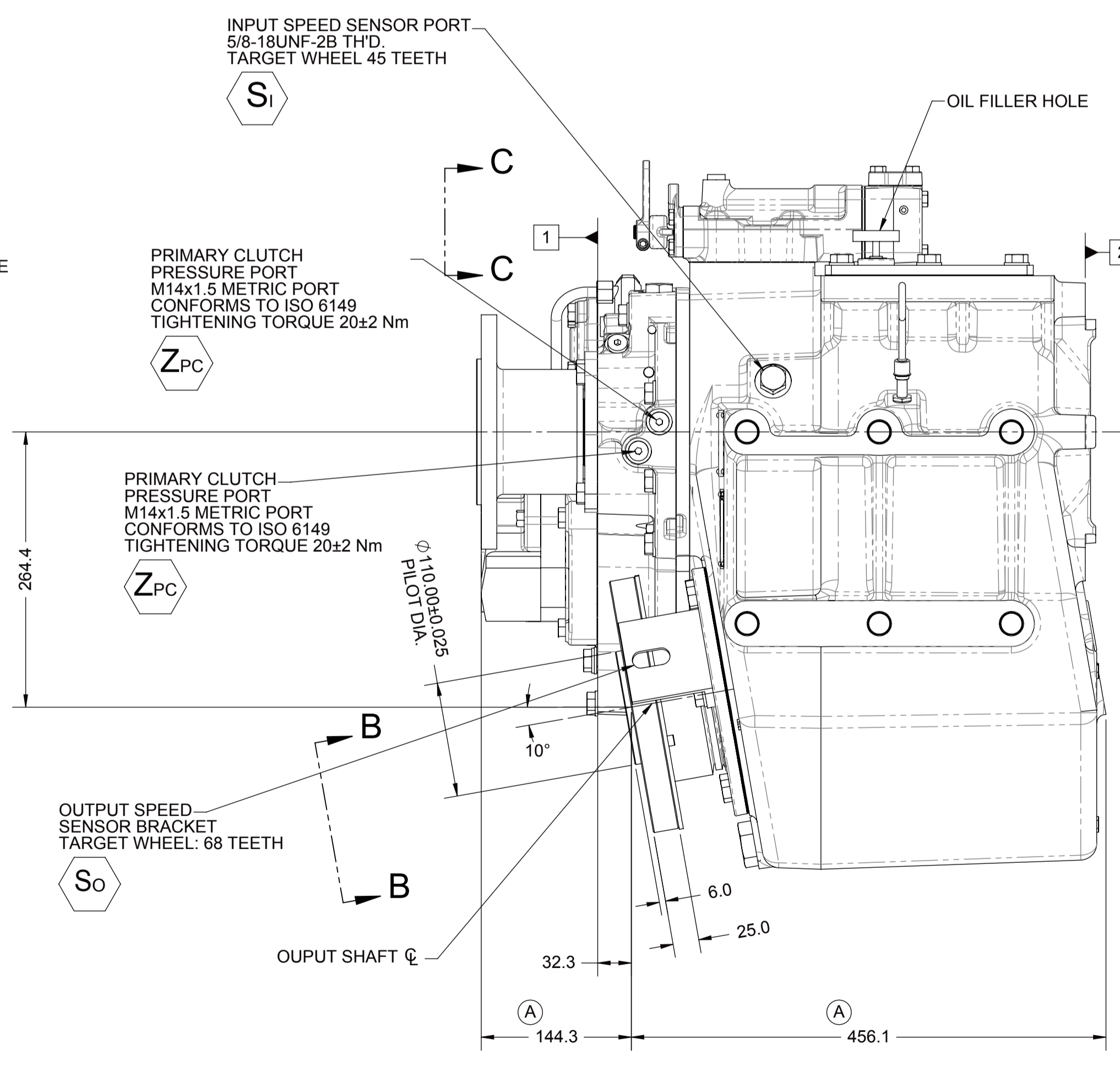
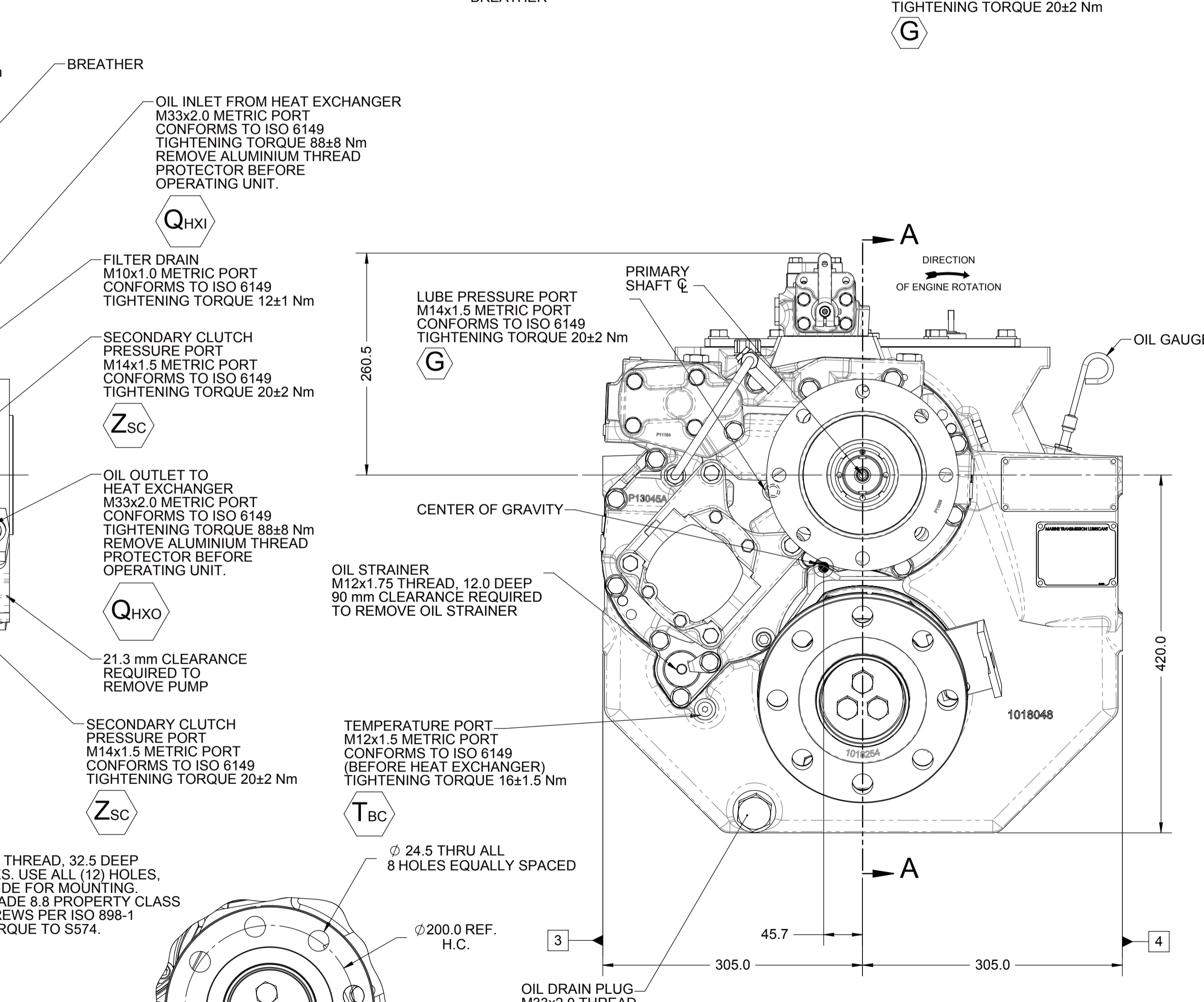
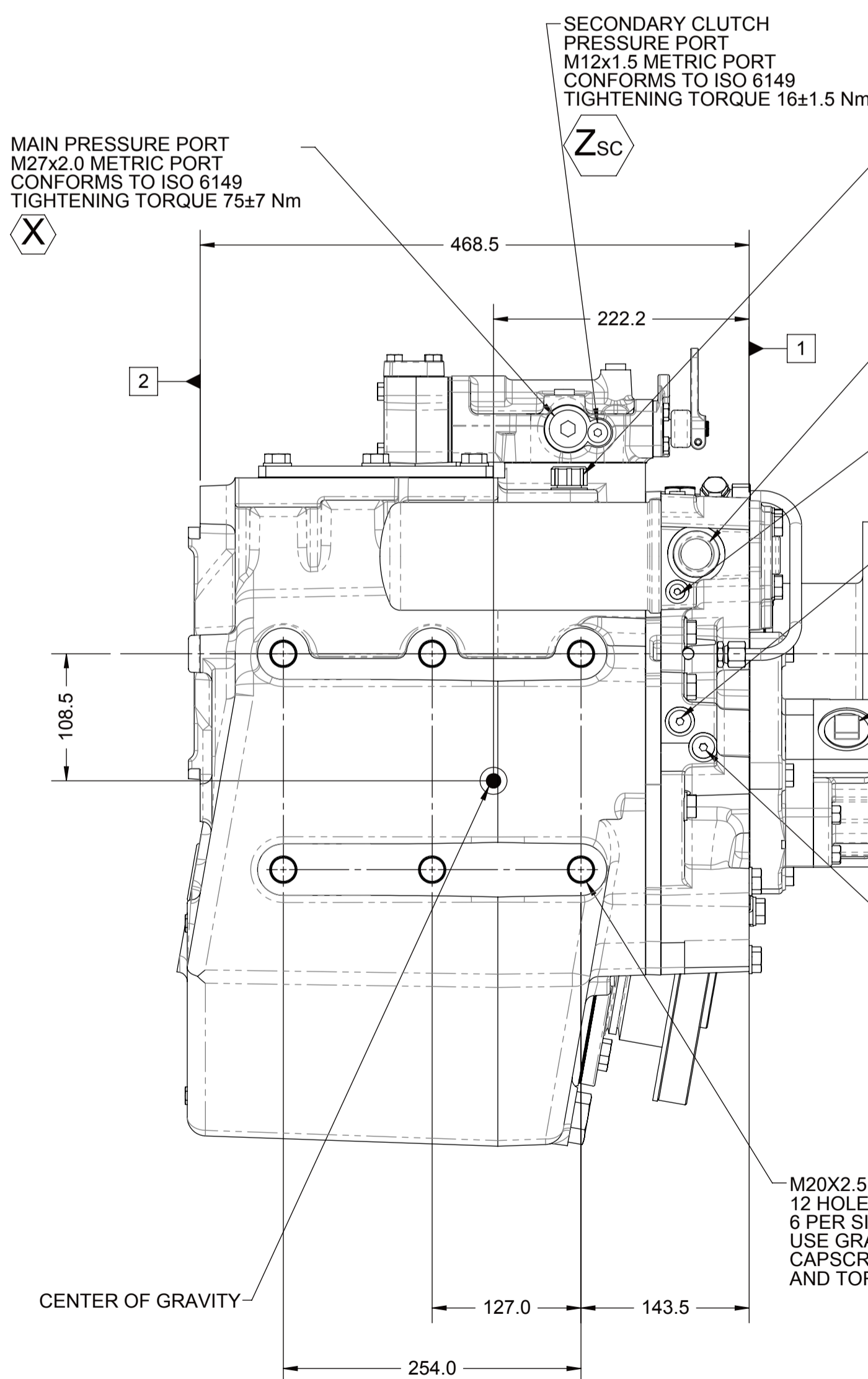
VIEW C-C
SCALE 1 : 2



SECTION A-A



PRIMARY CLUTCH PRESSURE PORT M14x1.5 METRIC PORT CONFORMS TO ISO 6149 TIGHTENING TORQUE 20±2 Nm



VIEW B-B

EQUIPMENT SHOWN:
 - MG-5146RV PER 1027906 ASSEMBLY
 - GWB 587.50 FREE STANDING INPUT FLANGE
 - MECHANICAL CONTORL VALVE LESS TROLLING

FIRST USE ASSEMBLY: 1027906		WEIGHT: 313.6 _g	THIRD ANGLE PROJECTION	MATERIAL:	DATE: 10/22/2013
FIRST USE MODEL: MG-5146RV		WR: 1027906		HEAT TREAT:	SCALE: 1:4
SIMILAR TO:				DESCRIPTION: INSTALLATION MG-5146RV	CHECKED BY: JMF
METRIC		UNLESS OTHERWISE SPECIFIED MACHINED DIMENSIONS: X ±0.75 X.X ±0.25 X.XX ±0.13 ALL ANGULAR TOLERANCES ±1° GEOMETRIC TOLERANCING PER ASME Y14.5M 1994		APPROVED BY: ALC	DWG SIZE: A1
NOTICE: THIS PRINT CONTAINS PROPRIETARY INFORMATION AND IS NOT TO BE USED IN ANY MANNER DETRIMENTAL TO THE INTEREST OF TWIN DISC, INCORPORATED. THIS NOTICE IS NOT INTENDED TO LIMIT OR LIMIT RIGHTS GRANTED TO THE U.S. GOVERNMENT OR OTHERS BY CONTRACT.		TWIN DISC, INCORPORATED		RACINE, WI 53403 - USA	
				1027907	
				SHEET: 1 OF 1	