

- 1 INPUT GROUP REFERENCE PLANE
- 2 PTO GROUP MOUNTING FACE
- 3 LEFT MOUNTING BRACKET FACE
- 4 RIGHT MOUNTING BRACKET FACE

NOTES:

A. PROPORTIONAL CONTROL VALVE OPERATION

1. WARNING - DO NOT CONNECT VALVE COIL DIRECTLY TO BATTERY/ POWER SUPPLY VOLTAGE
2. OPERATION TO BE PERFORMED WITH ONLY TWIN-DISC CONTROL SYSTEM MODULES

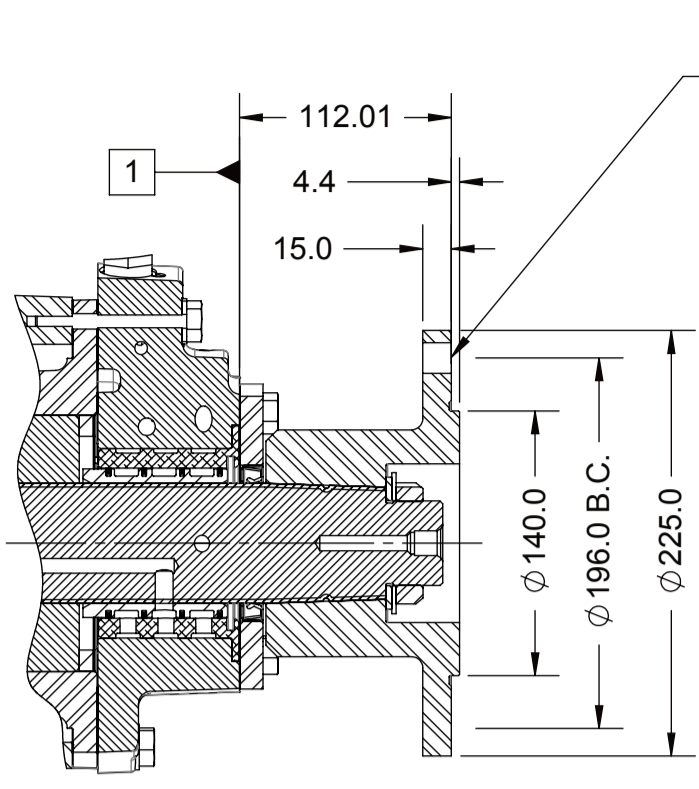
B. MANUAL DIRECTIONAL CONTROL VALVE OPERATION

1. WITH MANUAL DIRECTIONAL CONTROL VALVE IN CENTERED POSITION PUSH TO ENGAGE PRIMARY CLUTCH
2. WITH MANUAL DIRECTIONAL CONTROL VALVE IN CENTERED POSITION PULL TO ENGAGE SECONDARY CLUTCH

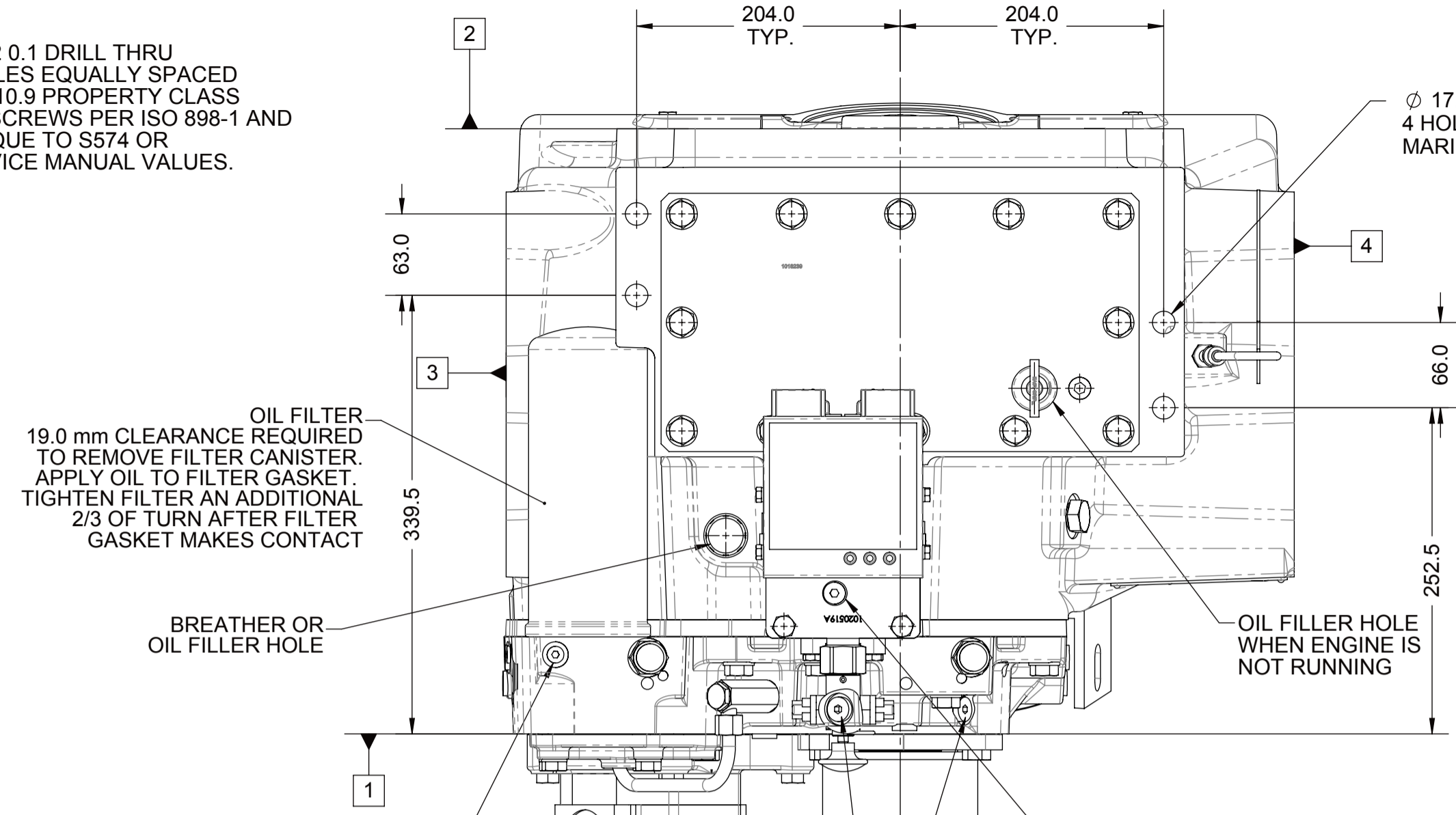
C. MANUAL DIRECTIONAL CONTROL VALVE MODE SWITCH

1. SWITCH IS NORMALLY CLOSED WHEN MANUAL DIRECTIONAL CONTROL VALVE IS IN CENTERED POSITION AND OPEN WHEN LEVER IS ACTUATED FROM CENTERED POSITION
2. CURRENT = 20 AMP MAX.
3. FOR WIRING SCHEMATIC REFER TO CONTROL DRAWING

UNLESS OTHERWISE SPECIFIED FASTENER TORQUE VALUES AS PER S574 STANDARD

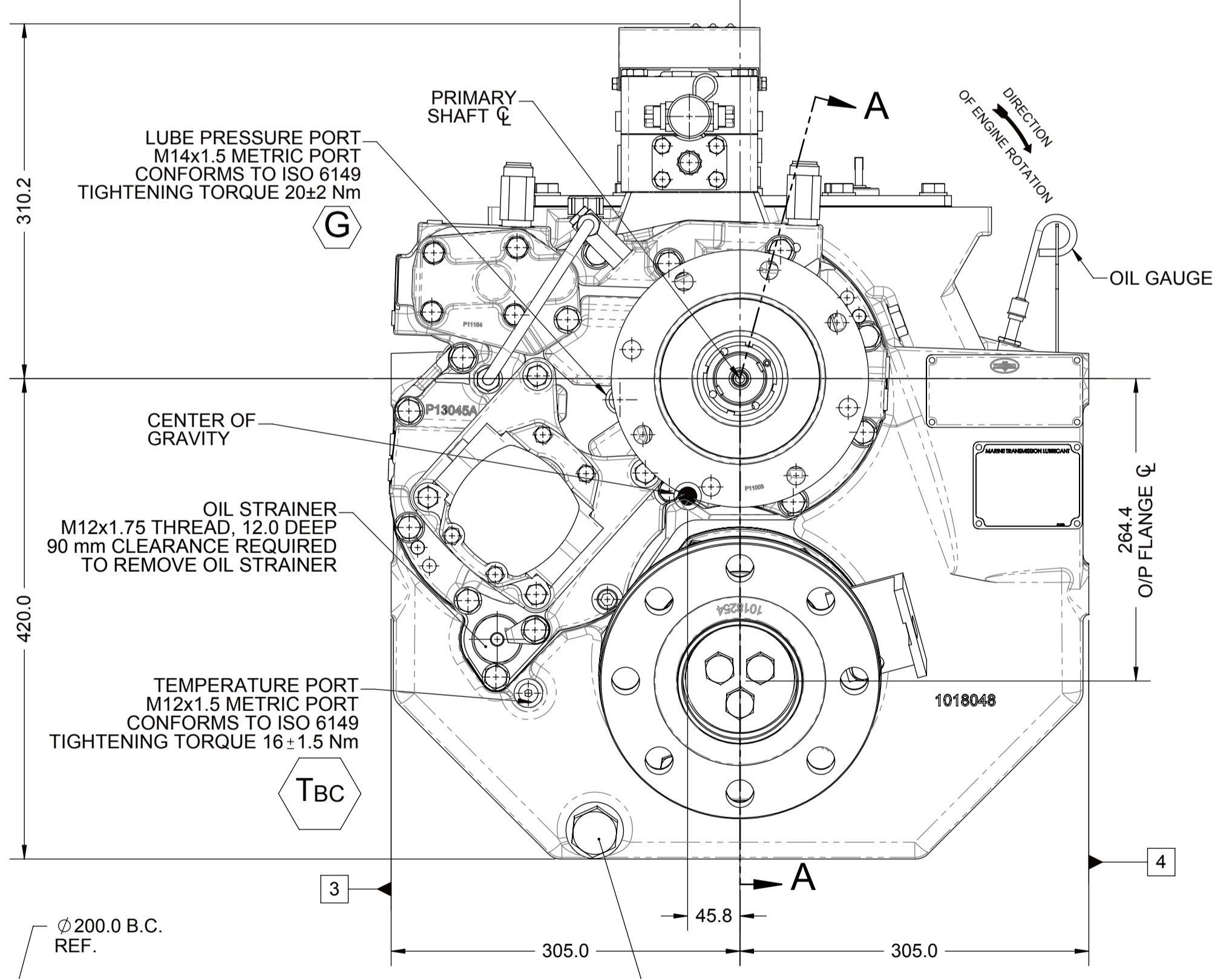
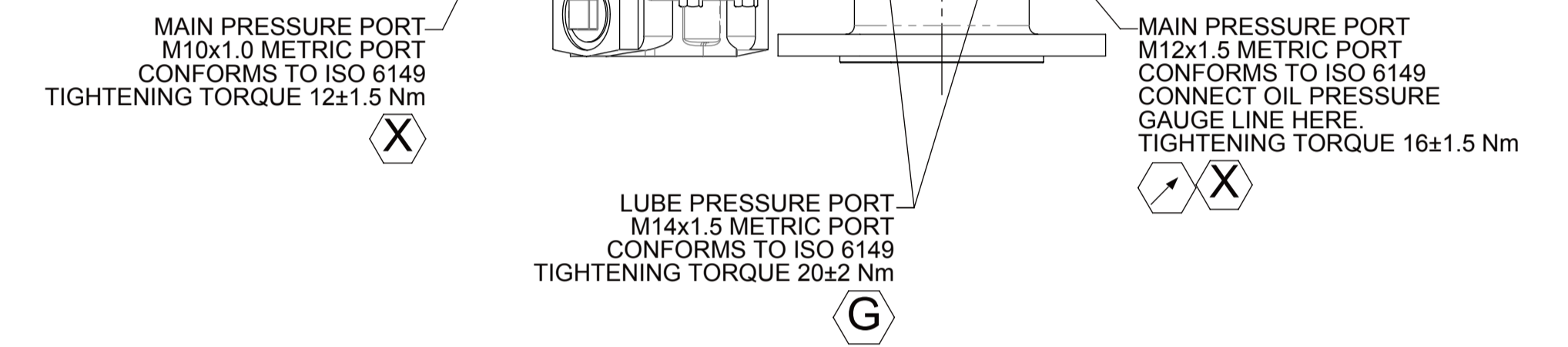
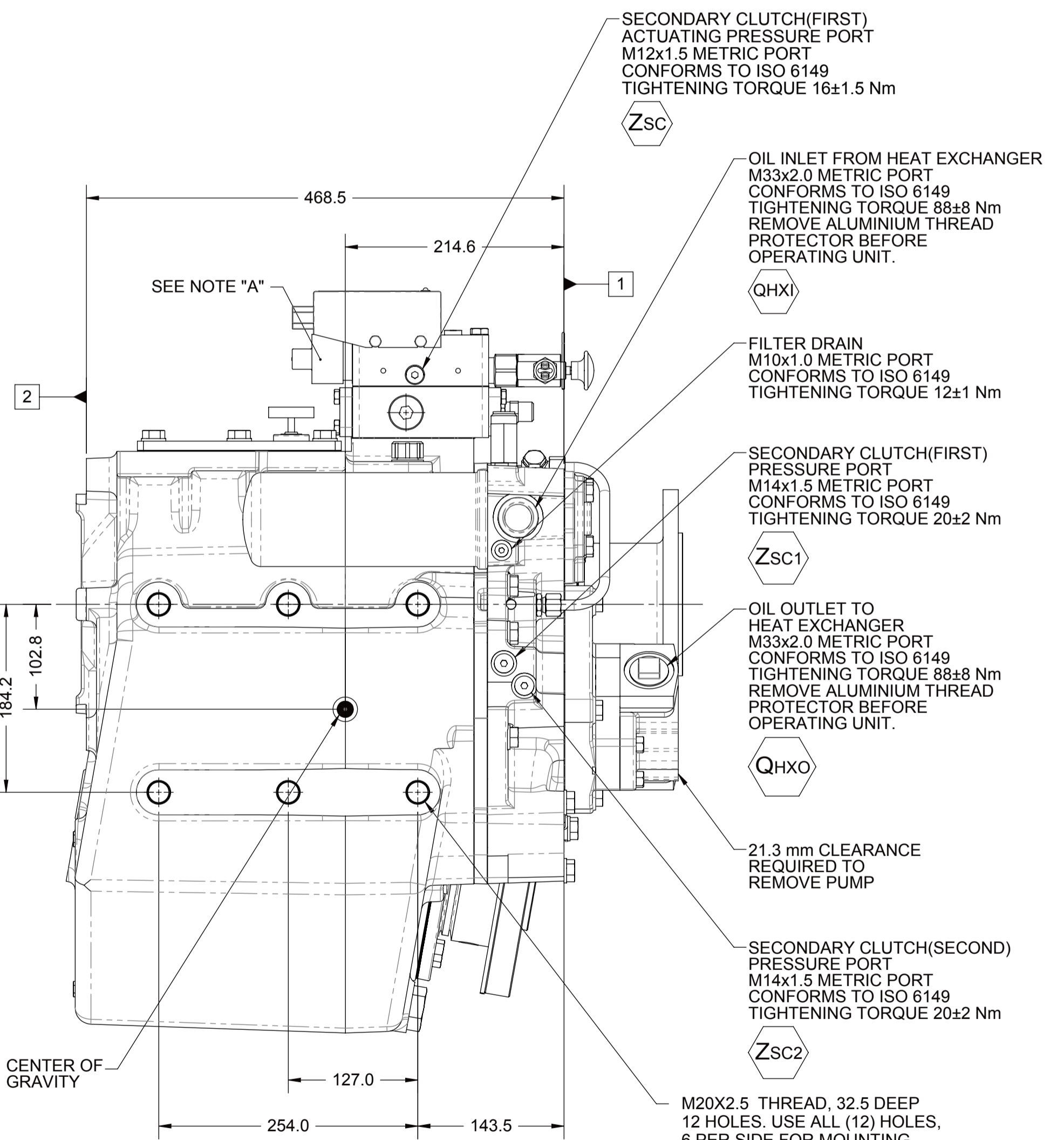


SECTION A-A

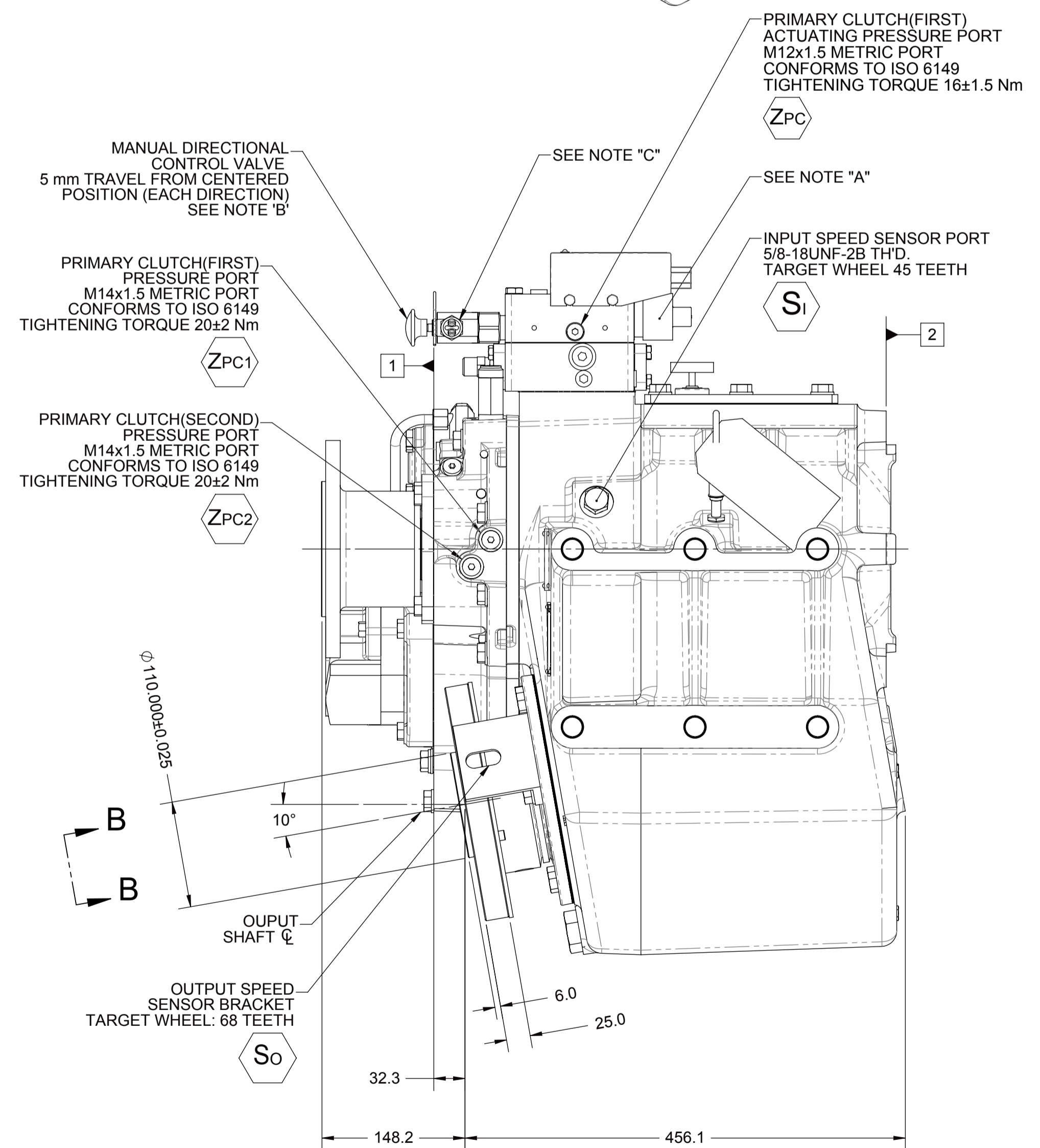
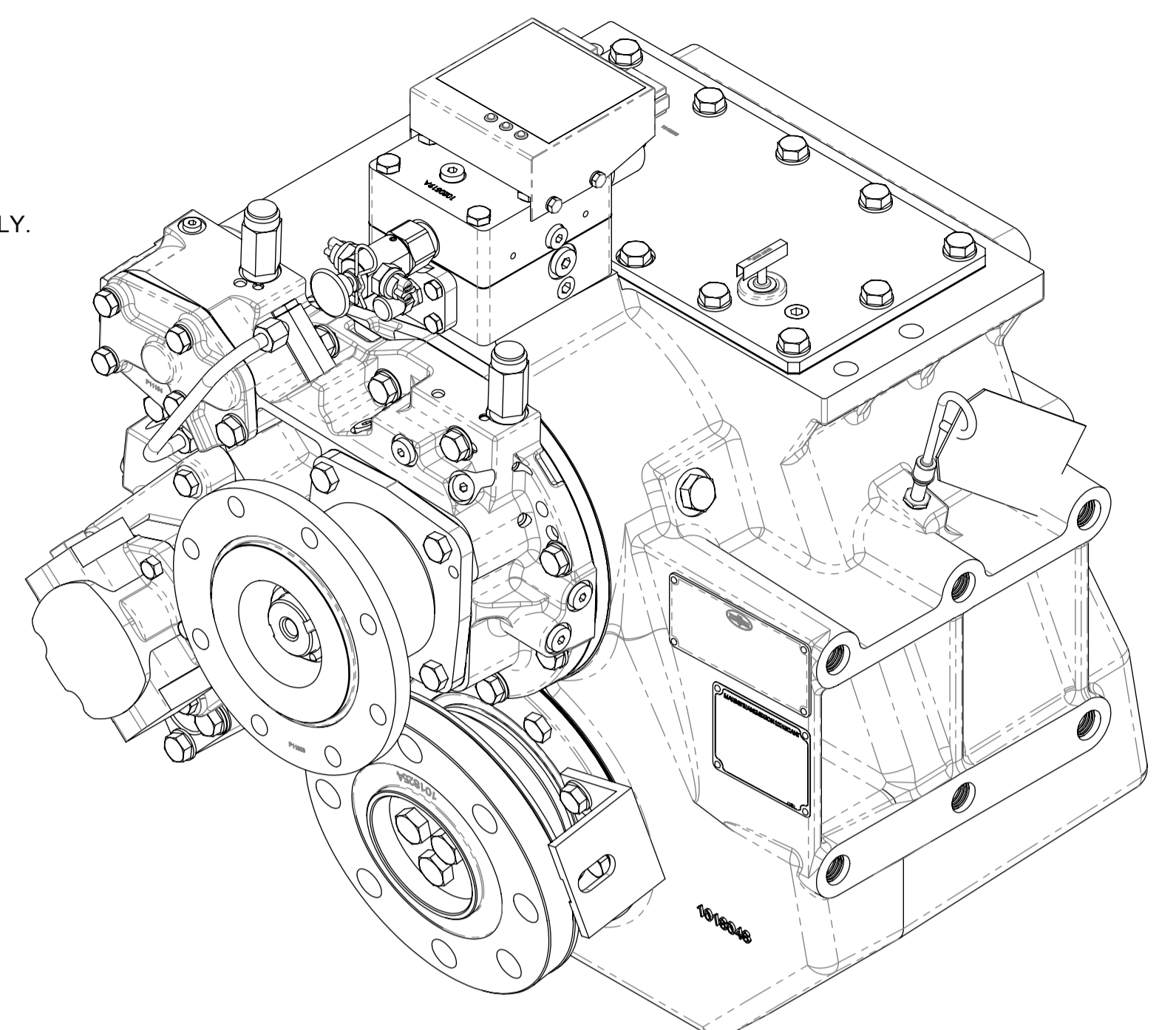


Ø 17.50 DRILL THRU. 4 HOLES FOR LIFTING MARINE TRANSMISSION ONLY.

ALL POINTS AVAILABLE FOR TESTING CODED



VIEW B-B



EQUIPMENT SHOWN:
 - MGX-5146RV PER 1027556 ASSEMBLY
 - GWB 587.50 FREESTANDING FLANGE
 - GP VALVE WITH EC050 PROFILE MODULE

FIRST USE ASSEMBLY:	WEIGHT: 317.9 _g	THIRD ANGLE PROJECTION	MATERIAL:	DATE: 01/17/2013
FIRST USE MODEL:	WR: kg-m ³	UNLESS OTHERWISE SPECIFIED MACHINED DIMENSIONS: X ±0.75, XX ±0.25, XXX ±0.13	HEAT TREAT:	SCALE: 1:4
SIMILAR TO:	METRIC	ALL ANGULAR TOLERANCES ±1° PER ASME Y14.5M 1994	DESCRIPTION: INSTALLATION MGX-5146RV	DRAWN BY: MG
NOTICE: THIS PRINT CONTAINS PROPRIETARY INFORMATION AND IS NOT TO BE USED IN ANY MANNER DETRIMENTAL TO THE INTEREST OF TWIN DISC, INCORPORATED			APPROVED BY: JMF	CHECKED BY: JMF
THIS NOTICE IS NOT INTENDED TO WAIVE OR LIMIT RIGHTS GRANTED TO THE U.S. GOVERNMENT OR OTHERS BY CONTRACT.			REV: JMF	DWG SIZE: A1
				REV: 09/23/2014
				CHANGE NO. DATE
				TWIN DISC
				RACINE, WI 53403 - USA
				1027741
				SHEET: 1 OF 1