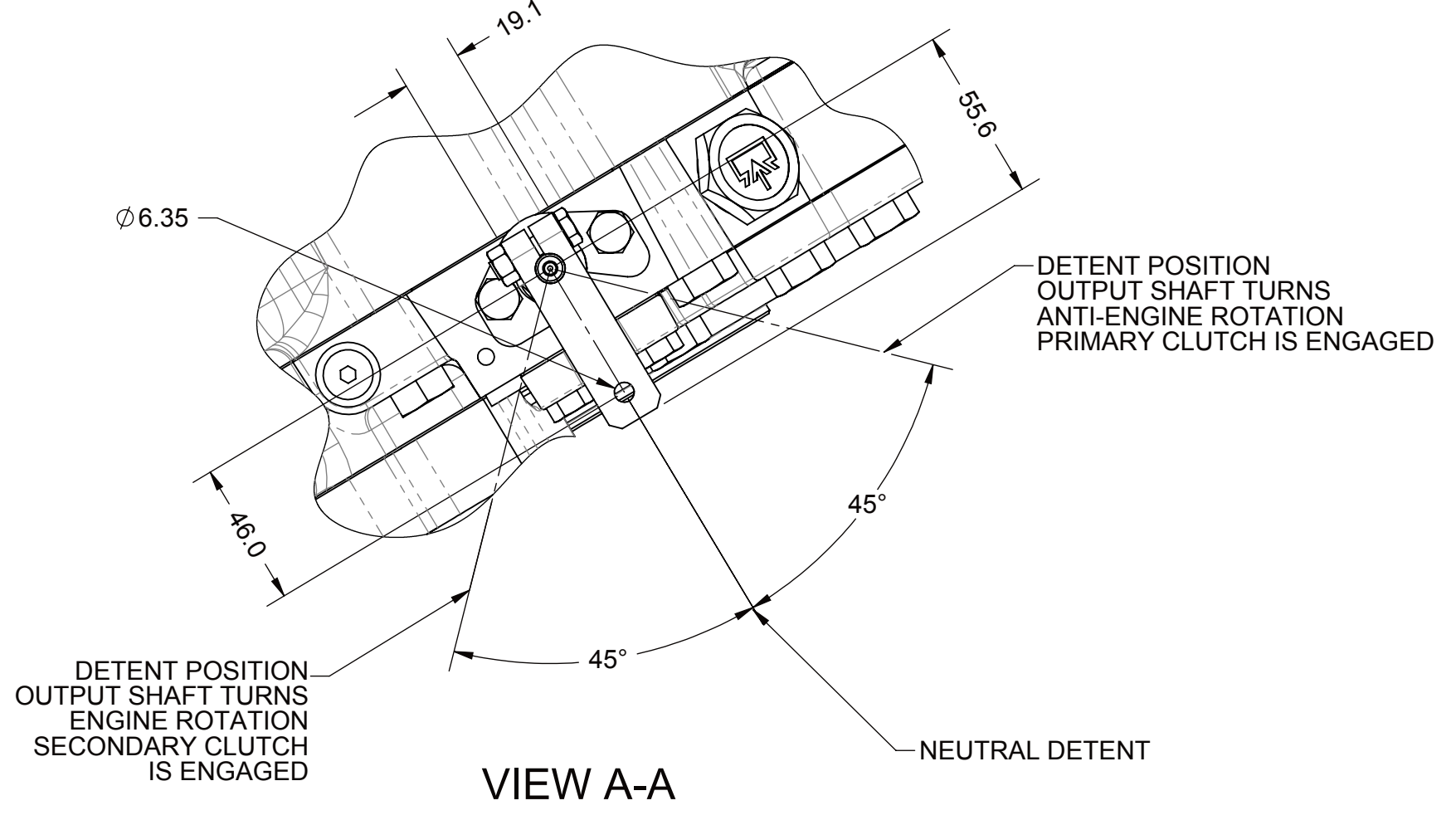


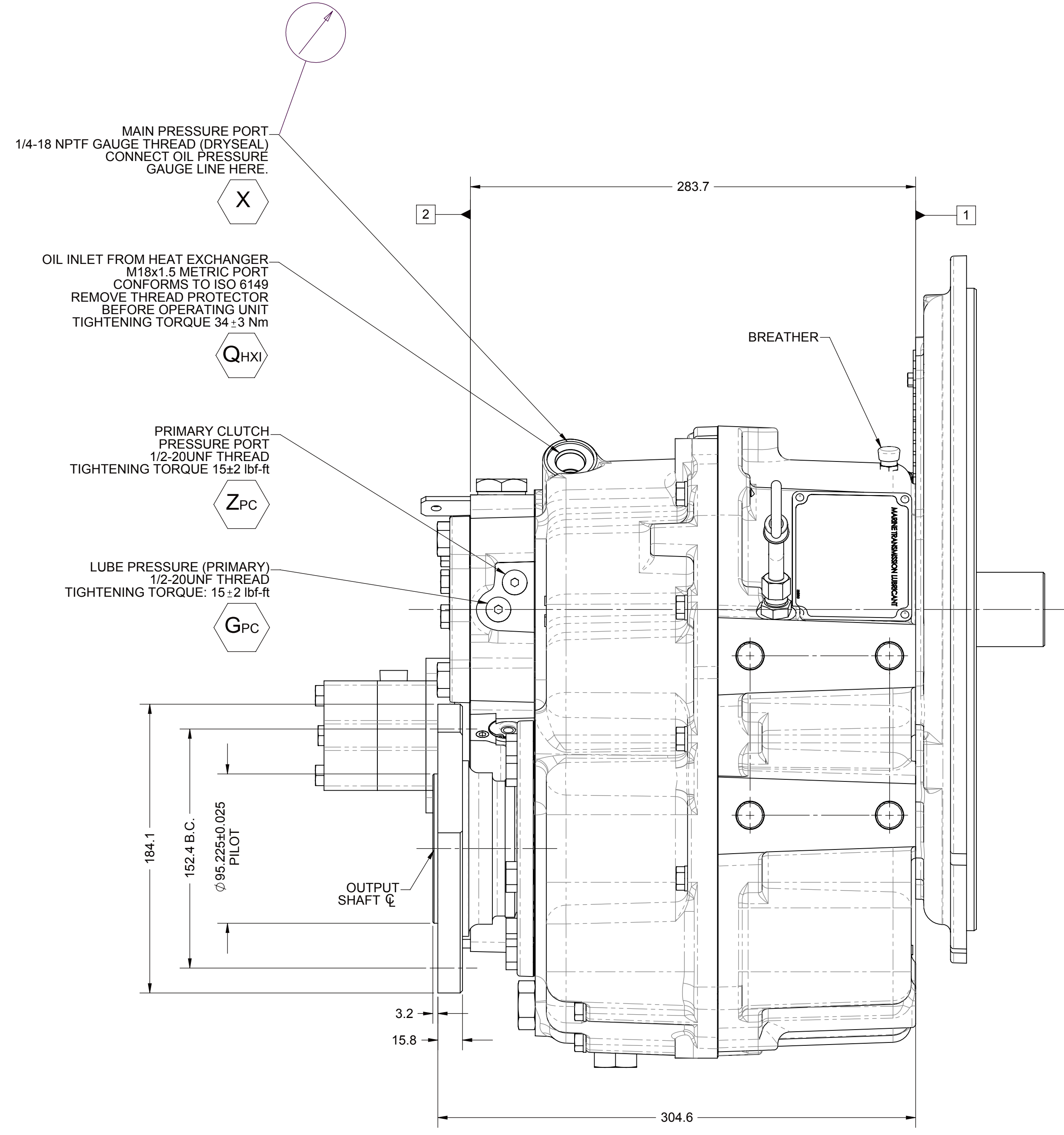
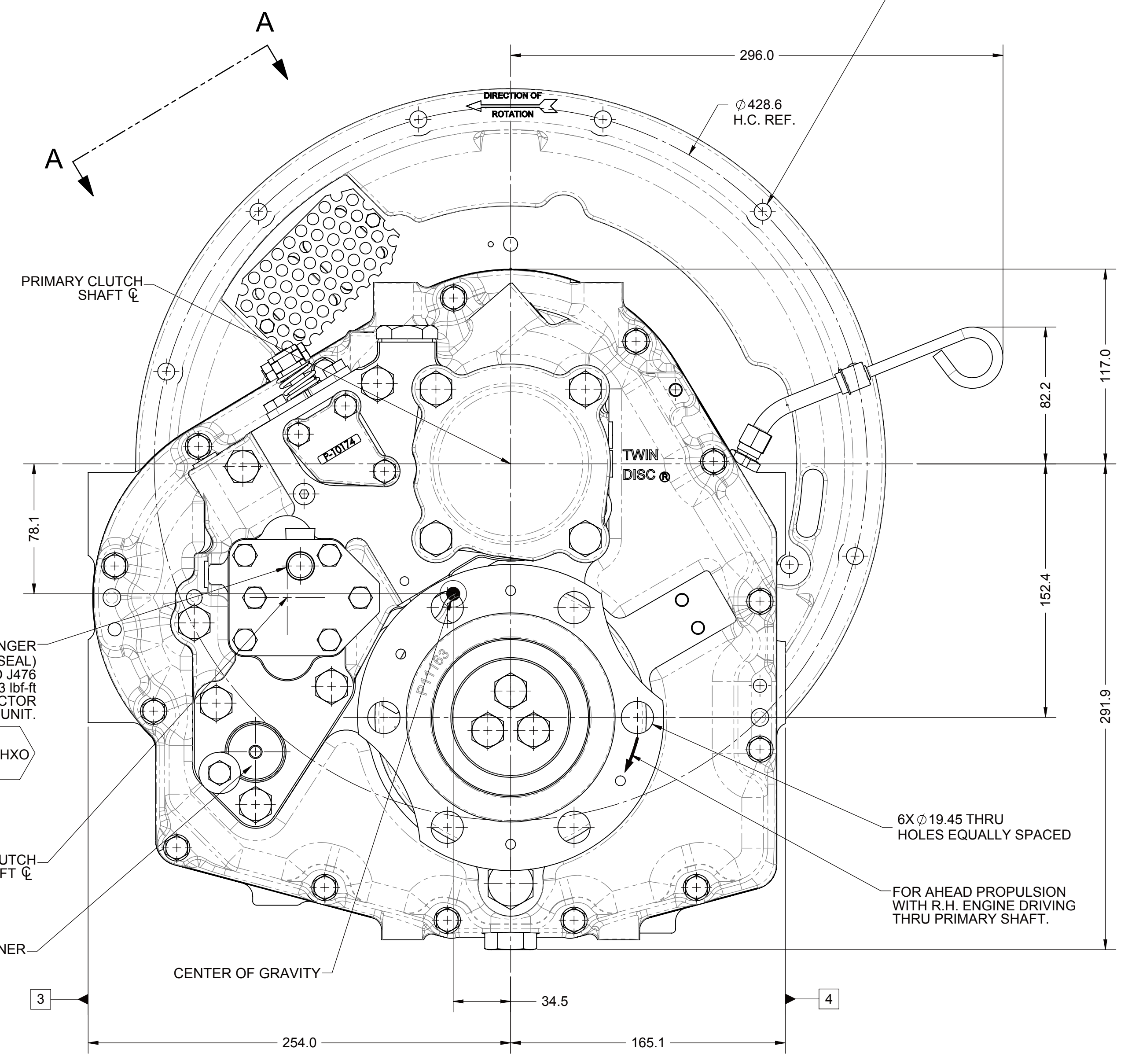
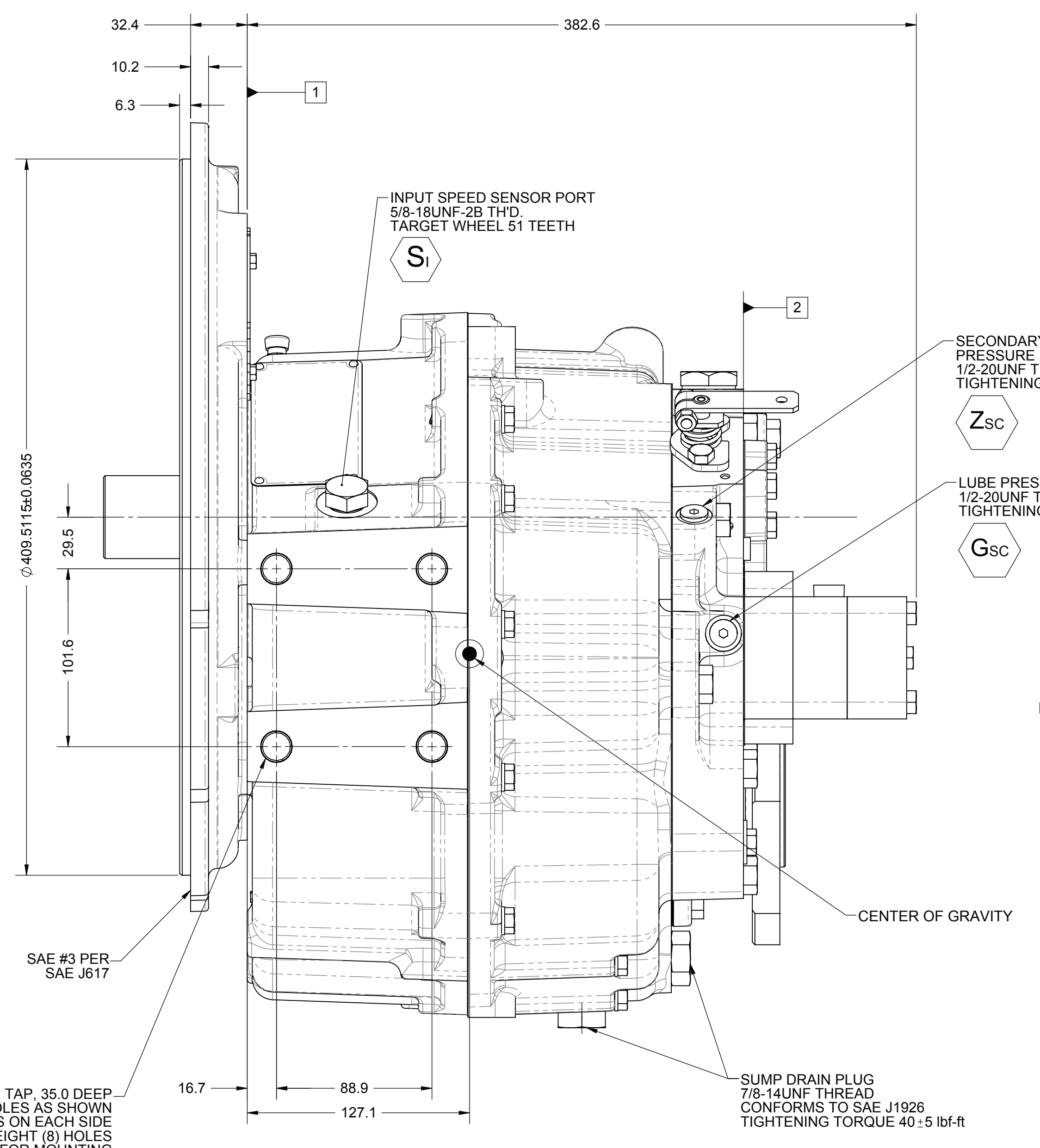
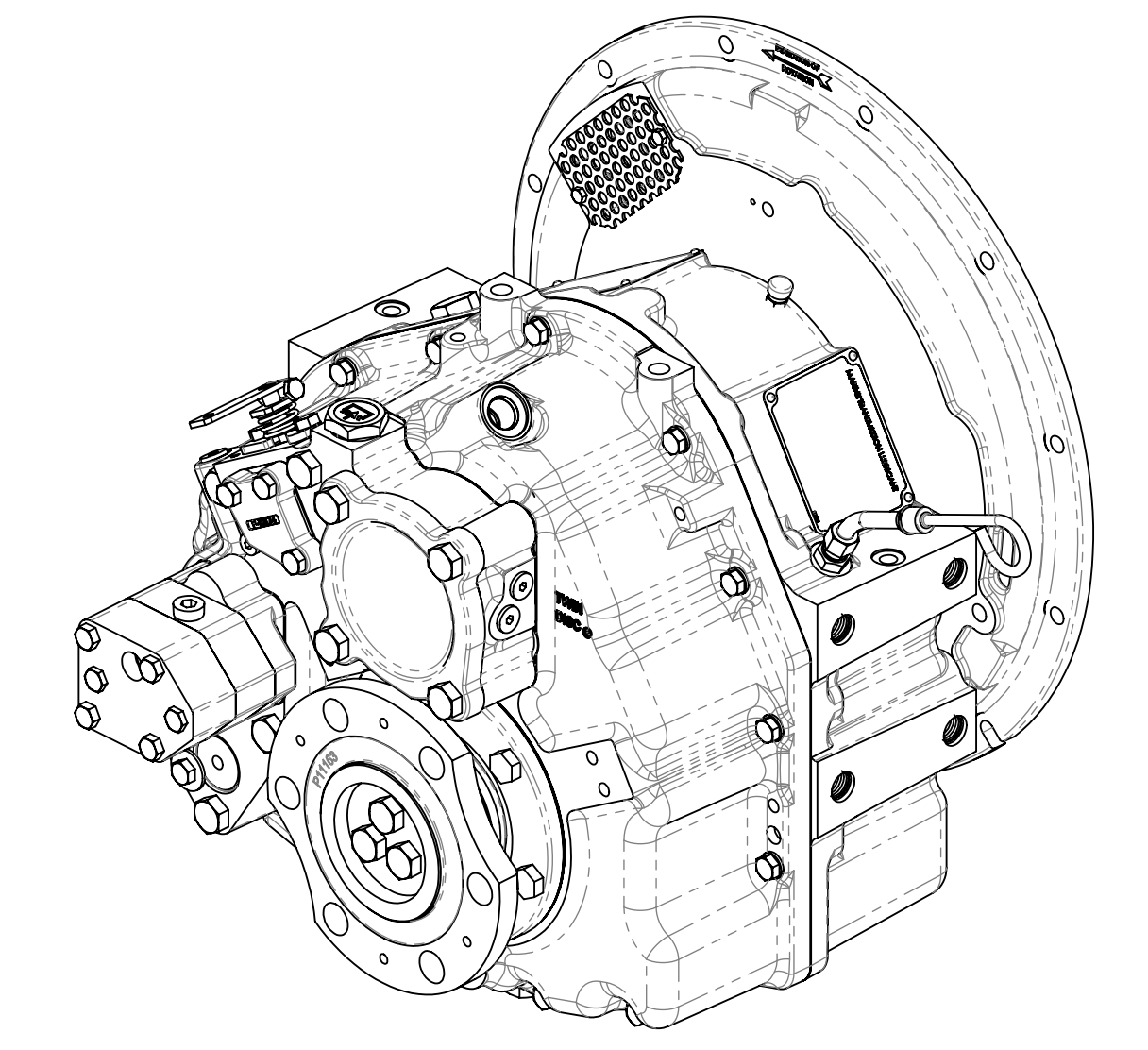
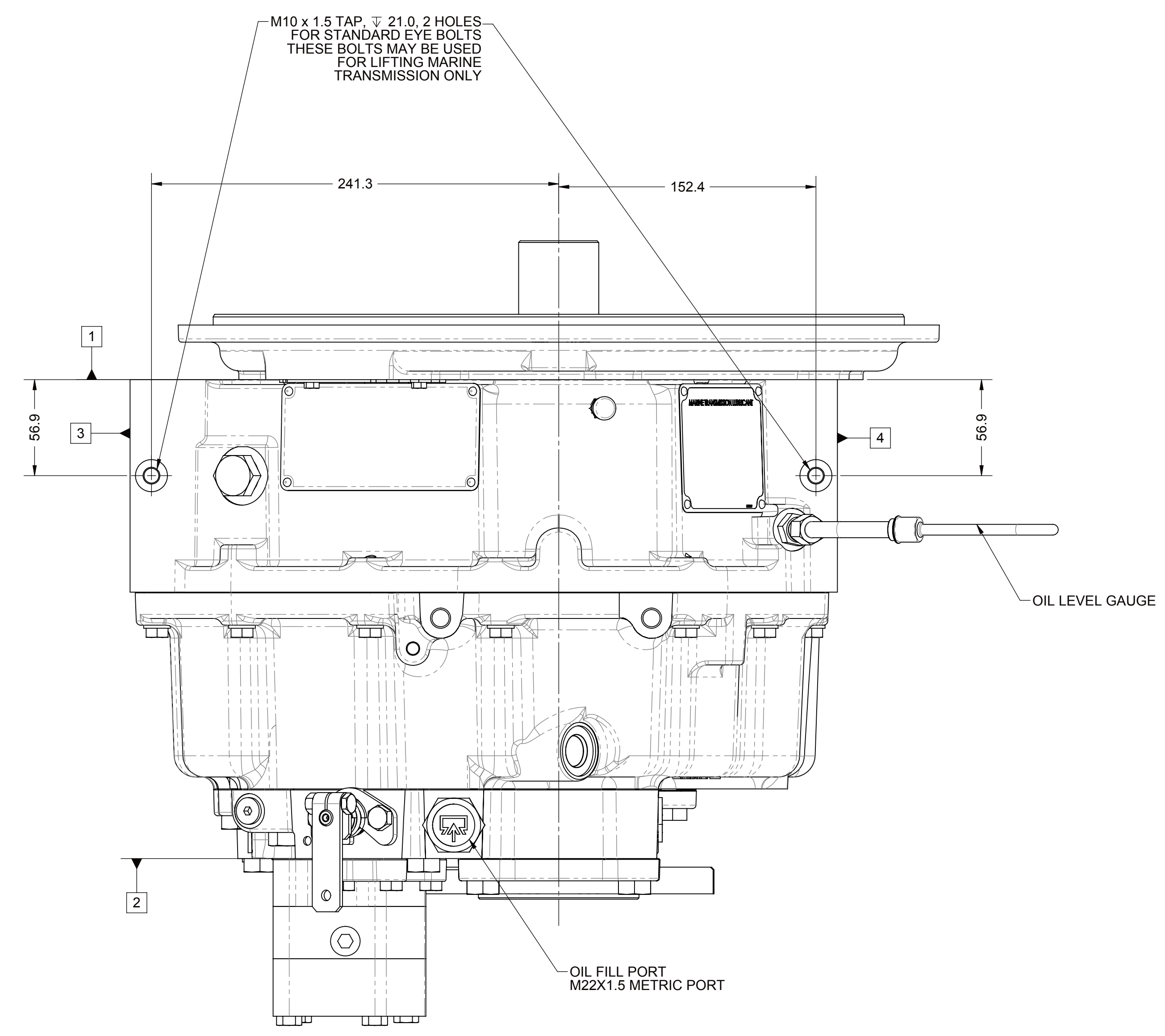
- 1 INPUT GROUP REFERENCE PLANE
- 2 PTO ADAPTER MOUNTING FACE
- 3 LEFT MOUNTING BRACKET FACE
- 4 RIGHT MOUNTING BRACKET FACE

NOTE:
 - THE 90° LEVER ROTATION REQUIRED FOR CONTROL MAY FALL ANYWHERE WITHIN THE 360° IN WHICH THE LEVER MAY BE CLAMPED.
 - FORCE REQUIRED TO MOVE CONTROL VALVE SELECTOR LEVER 33 N MAX.



- REFERENCE S930 FOR TWIN DISC REQUIREMENTS FOR PRESSURE AND TEMPERATURE ALARM LEVELS.
 ■ OPTIONAL TEMPERATURE INDICATING SWITCH: CUSTOMER TO INSTALL IN A PIPE TEE IN THE HYDRAULIC LINE LEADING FROM THE MARINE TRANSMISSION PUMP TO THE HEAT EXCHANGER INLET. REFER TO HYDRAULIC DIAGRAM.

ALL POINTS AVAILABLE FOR TESTING ARE CODED



M16 x 2 TAP, 35.0 DEEP, 8 HOLES AS SHOWN TWO PADS ON EACH SIDE USE ALL EIGHT (8) HOLES FOUR (4) PER SIDE FOR MOUNTING USE GRADE 8.8 PROPERTY CLASS QUALITY CAPSCREWS PER ISO 898-1 AND TORQUE TO S574 OR SERVICE MANUAL VALUES.

EQUIPMENT SHOWN:
 - MG-5065SC PER PX11480 SERIES
 - MECHANICAL CONTROL VALVE LESS MECHANICAL TROLLING VALVE
 - SAE #3 HOUSING ADAPTER

NDIWF-50355	03/18/2015	DATE	03/17/2015
REV: CHANGE NO.	DATE	SCALE:	1:2
FIRST USE ASSEMBLY PX11480A	WEIGHT: 109.96	THIRD ANGLE PROJECTION	
FIRST USE MODEL MG-5065SC			
SIMILAR TO:			
METRIC		UNLESS OTHERWISE SPECIFIED	HEAT TREAT:
		ALL DIMENSIONS IN MILLIMETERS	
		ALL ANGLES TO DIMENSIONS ±1°	
		GEOMETRIC TOLERANCING PER ASME Y14.5M-1994	
		THIS DOCUMENT IS THE PROPERTY OF TWIN DISC, INCORPORATED	
		NO REPRODUCTION OR TRANSMISSION OF THIS DOCUMENT IS PERMITTED WITHOUT THE WRITTEN PERMISSION OF TWIN DISC, INCORPORATED	
DESCRIPTION:	INSTALLATION	APPROVED BY:	DATE:
	MG-5065SC	DV	AO
			1 OF 1