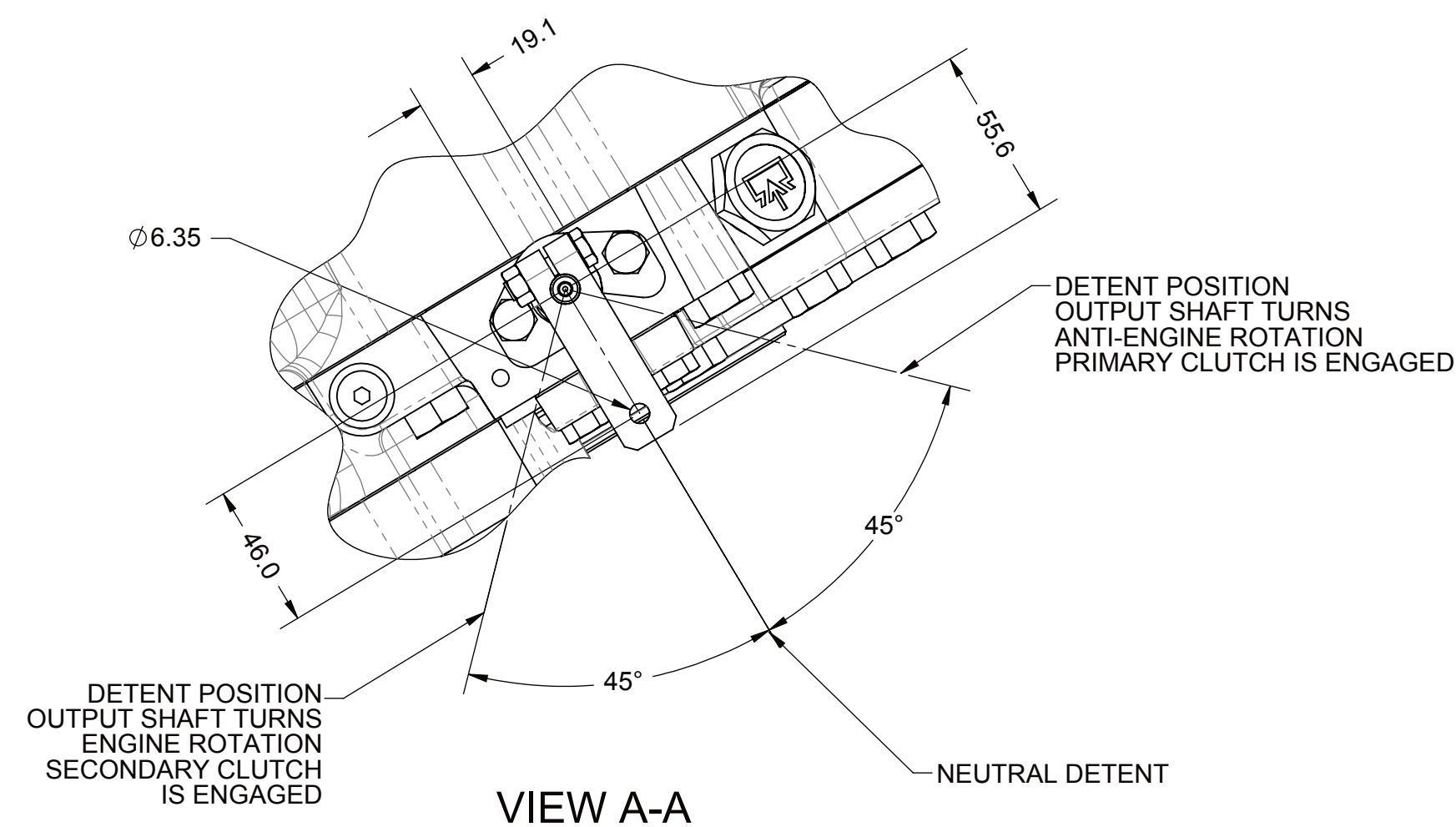


**NOTE:**

- THE 90° LEVER ROTATION REQUIRED FOR CONTROL MAY FALL ANYWHERE WITHIN THE 360° IN WHICH THE LEVER MAY BE CLAMPED.

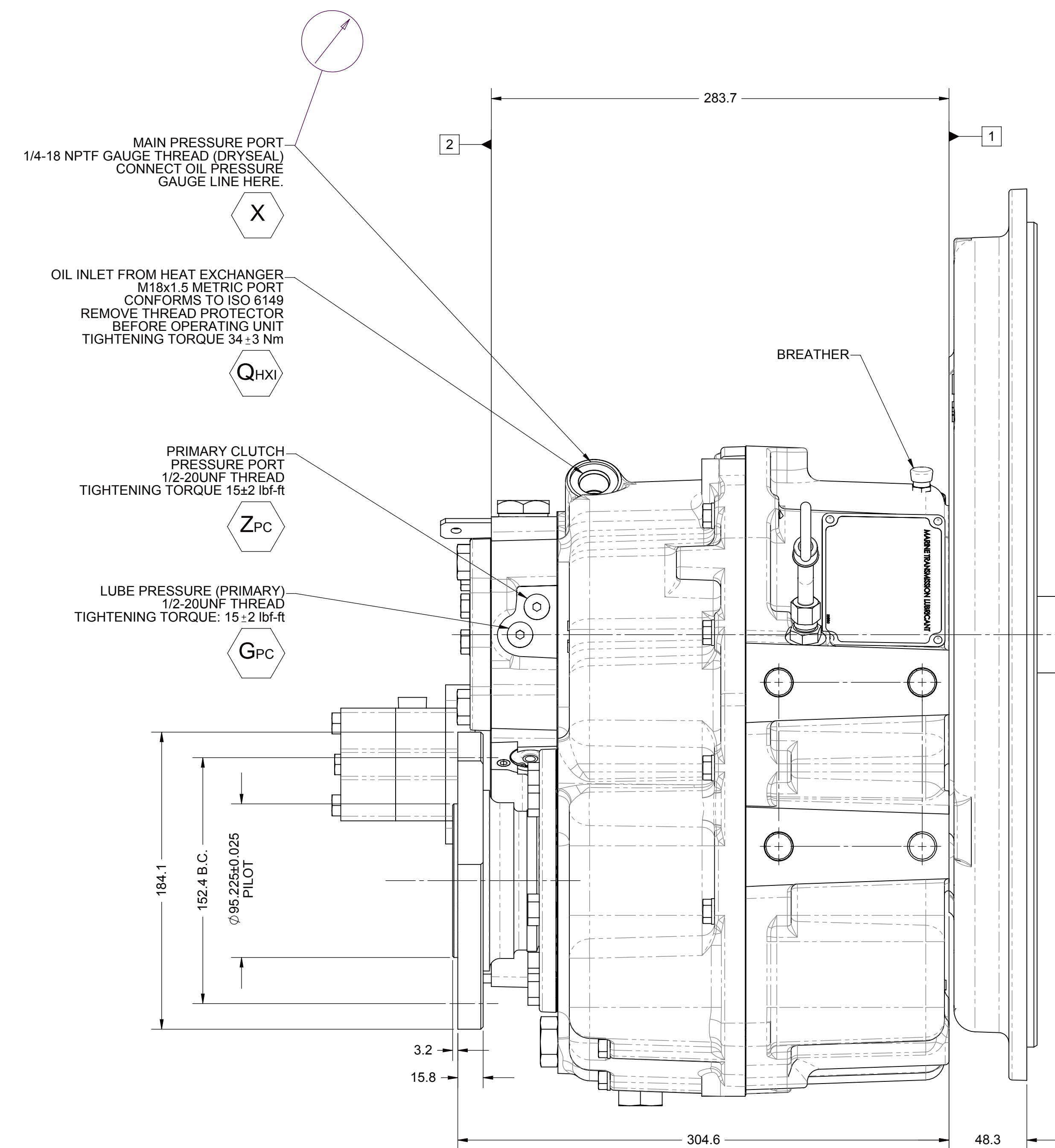
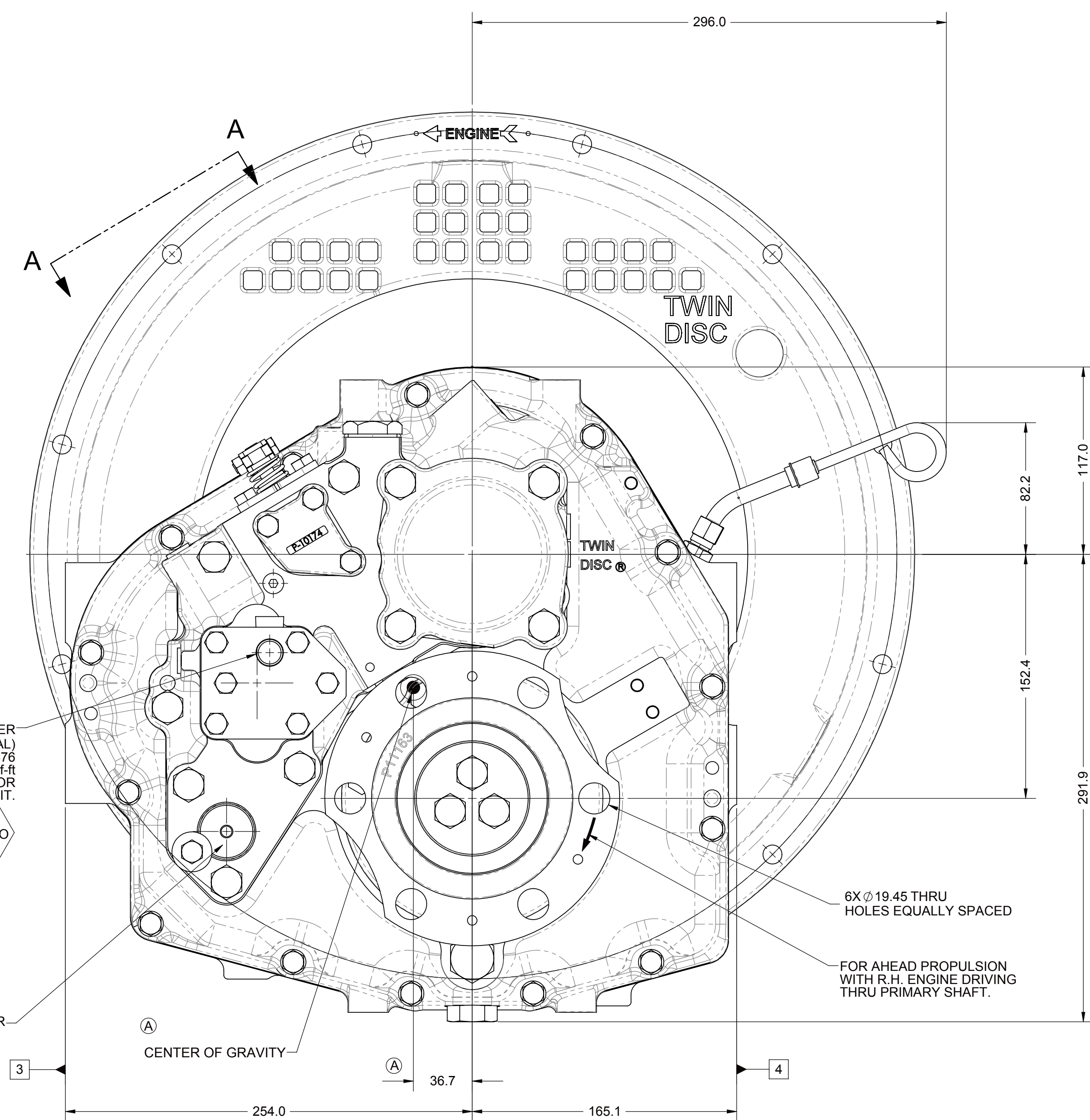
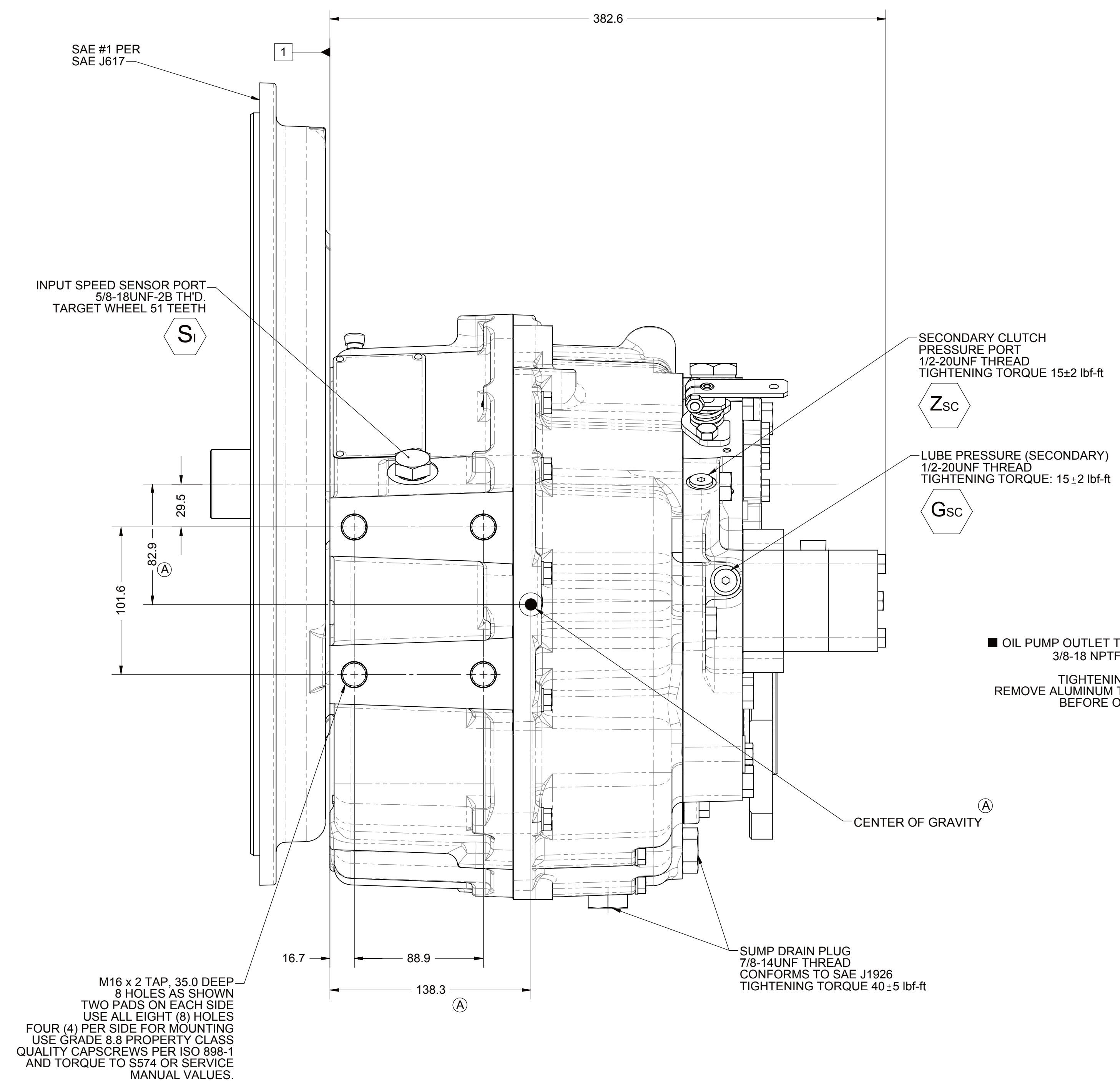
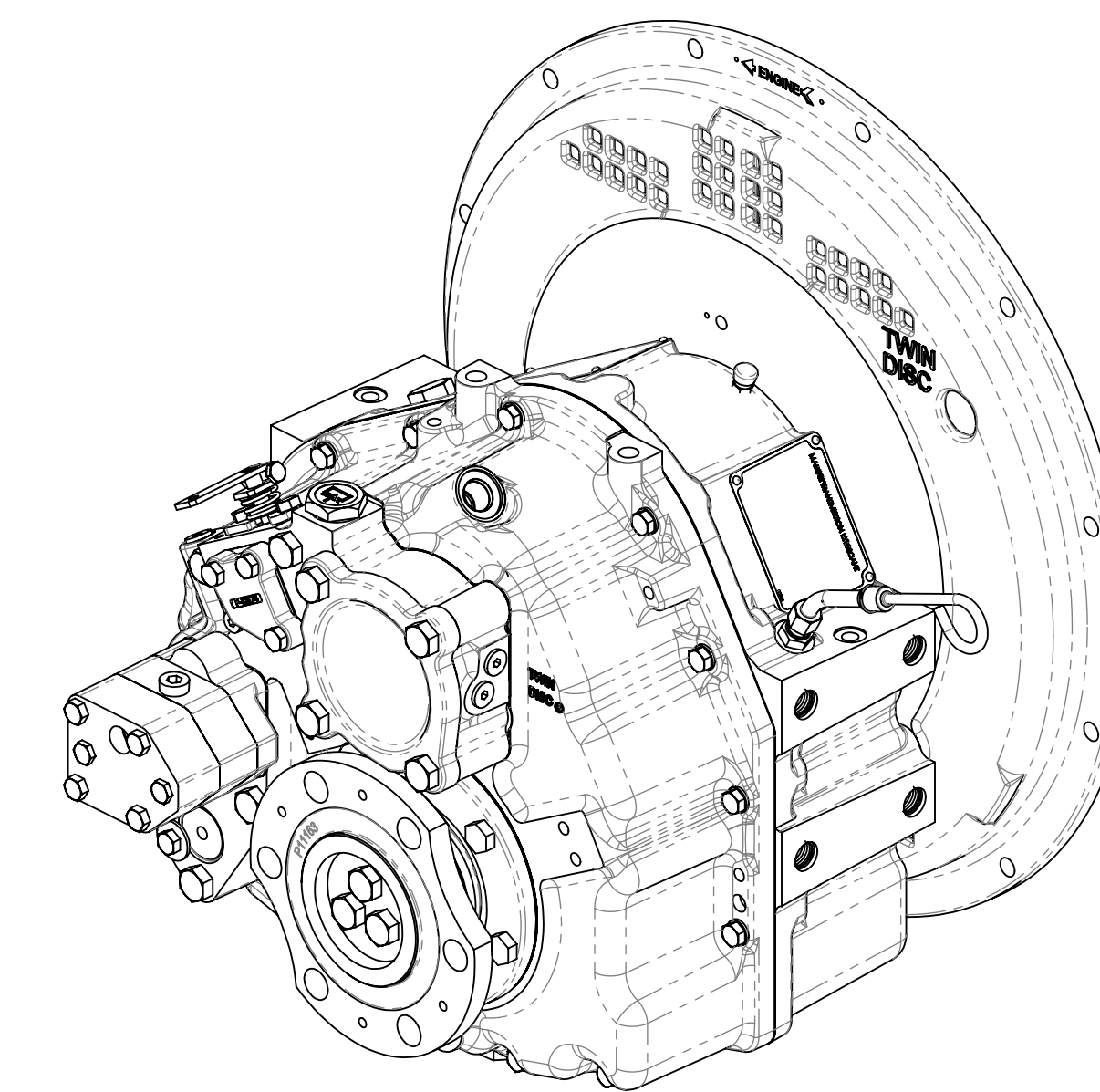
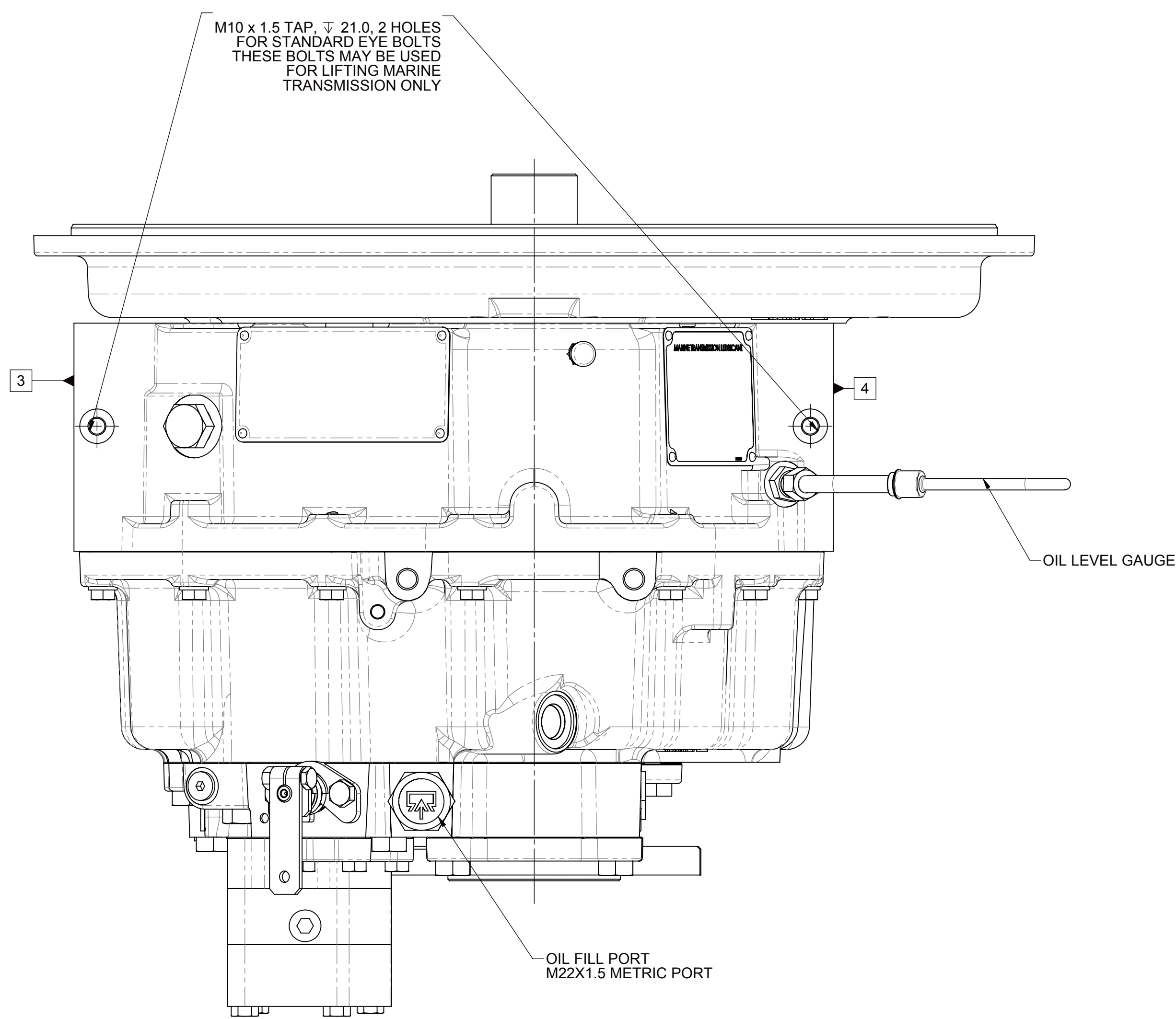
- FORCE REQUIRED TO MOVE CONTROL VALVE SELECTOR LEVER 33 N MAX.



- REFERENCE S930 FOR TWIN DISC REQUIREMENTS FOR PRESSURE AND TEMPERATURE ALARM LEVELS.

■ OPTIONAL TEMPERATURE INDICATING SWITCH: CUSTOMER TO INSTALL IN A PIPE TEE IN THE HYDRAULIC LINE LEADING FROM THE MARINE TRANSMISSION PUMP TO THE HEAT EXCHANGER INLET. REFER TO HYDRAULIC DIAGRAM.

- 1 INPUT GROUP REFERENCE PLANE
- 2 PTO ADAPTER MOUNTING FACE
- 3 LEFT MOUNTING BRACKET FACE
- 4 RIGHT MOUNTING BRACKET FACE



M16 x 2 TAP, 35.0 DEEP 8 HOLES AS SHOWN TWO PADS ON EACH SIDE USE ALL EIGHT (8) HOLES FOUR (4) PER SIDE FOR MOUNTING USE GRADE 8.8 PROPERTY CLASS QUALITY CAPSCREWS PER ISO 898-1 AND TORQUE TO S574 OR SERVICE MANUAL VALUES.

EQUIPMENT SHOWN:  
 - MG-5065SC PER PX11480 SERIES  
 - MECHANICAL CONTROL VALVE LESS MECHANICAL TROLLING VALVE  
 - SAE #1 HOUSING ADAPTER

FIRST USE ASSEMBLY PX11480A	WEIGHT 103.58	THIRD ANGLE PROJECTION	DATE 12/06/2011
FIRST USE MODEL MG-5065SC	SCALE 1:2		CHANGE NO. DATE
SIMILAR TO 1026371	DESIGNED DARRIN BROWN		
<b>METRIC</b>		UNITS USE DIMENSIONS SPECIFIED UNLESS OTHERWISE NOTED	
NOTICE: THIS PRINT CONTAINS PROPRIETARY INFORMATION AND IS THE PROPERTY OF TWIN DISC, INCORPORATED. IT IS TO BE USED ONLY FOR THE PURPOSES SPECIFIED HEREIN. ALL RIGHTS RESERVED.		ALL ANGLES TO DIMENSIONS ±1° UNLESS OTHERWISE SPECIFIED	
TWIN DISC, INCORPORATED		DESCRIPTION: INSTALLATION MG-5065SC	
APPROVED BY: JMF	DRAWN BY: KML	CHECKED BY: JMF	DATE: 12/06/2011
APPROVED BY: ALC	DRAWN BY: KML	CHECKED BY: JMF	DATE: 12/06/2011

1026372
   
 SHEET 1 OF 1