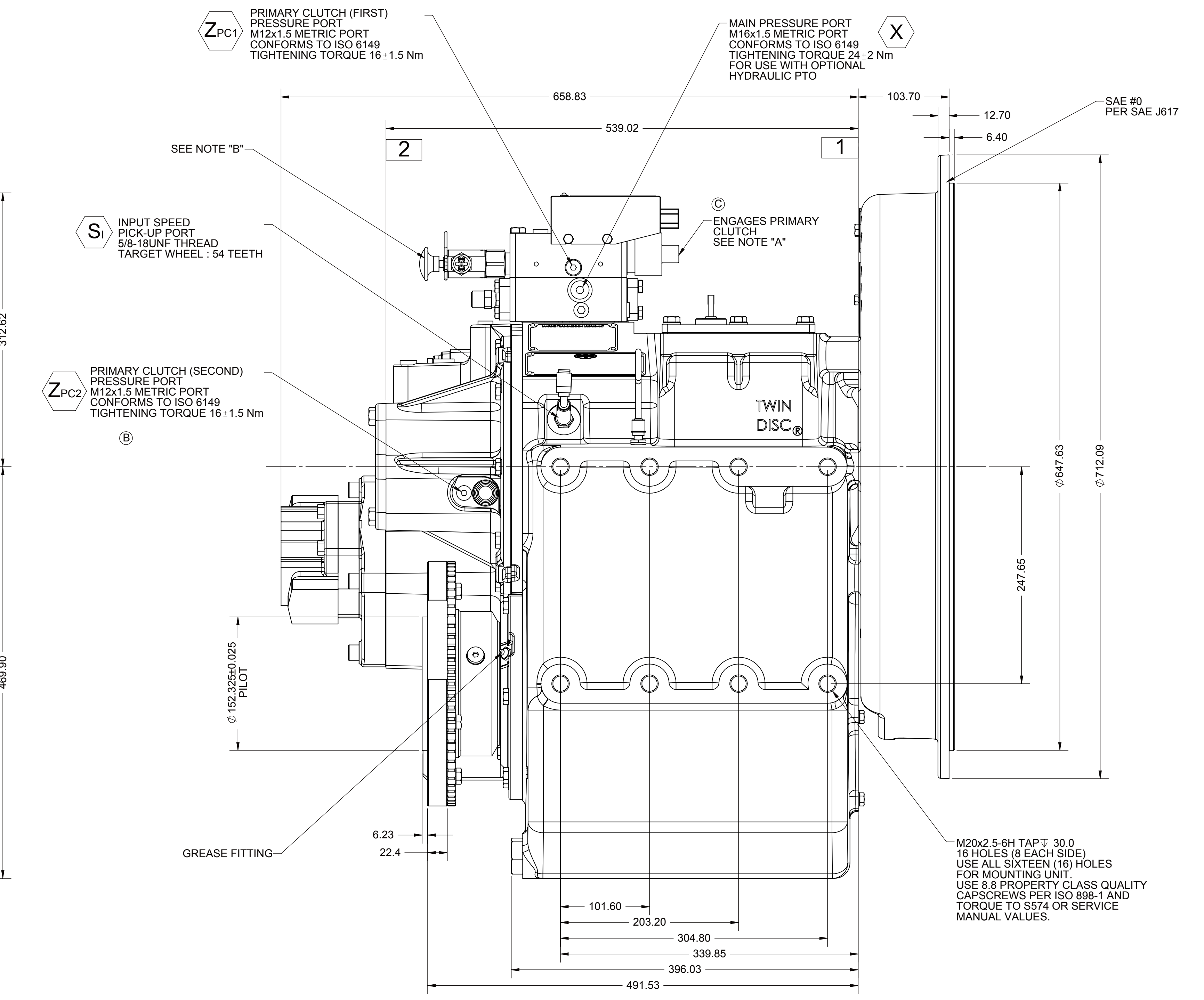
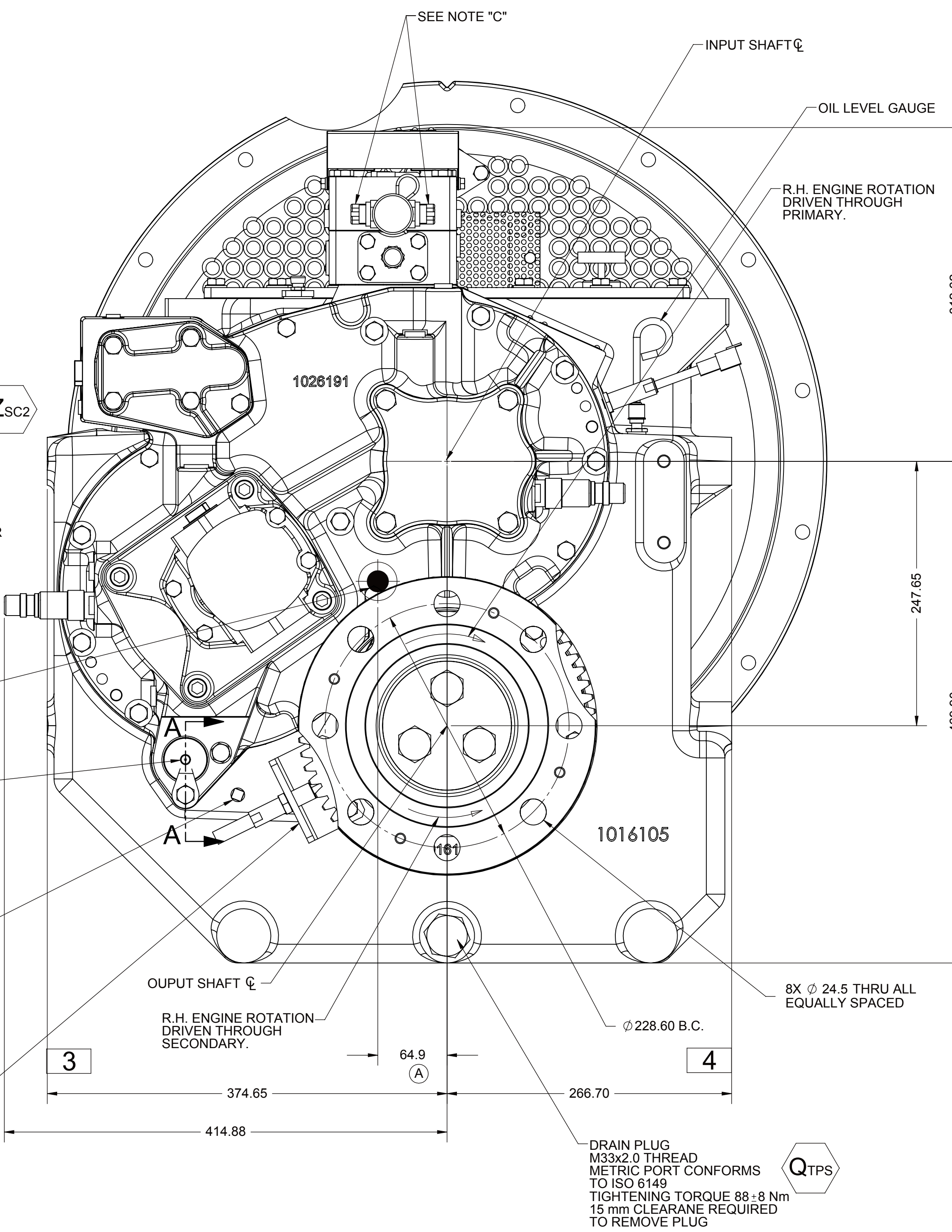
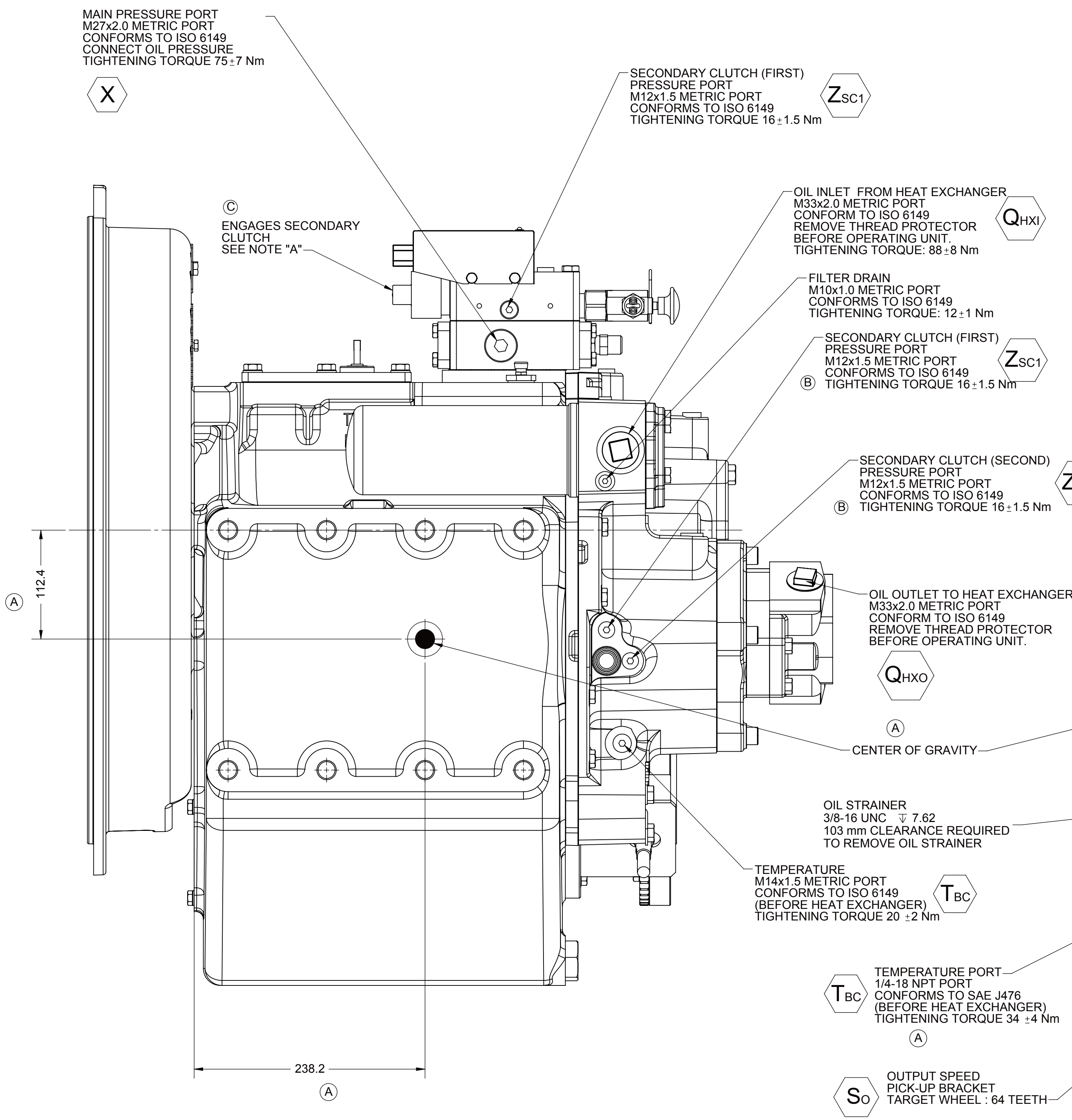
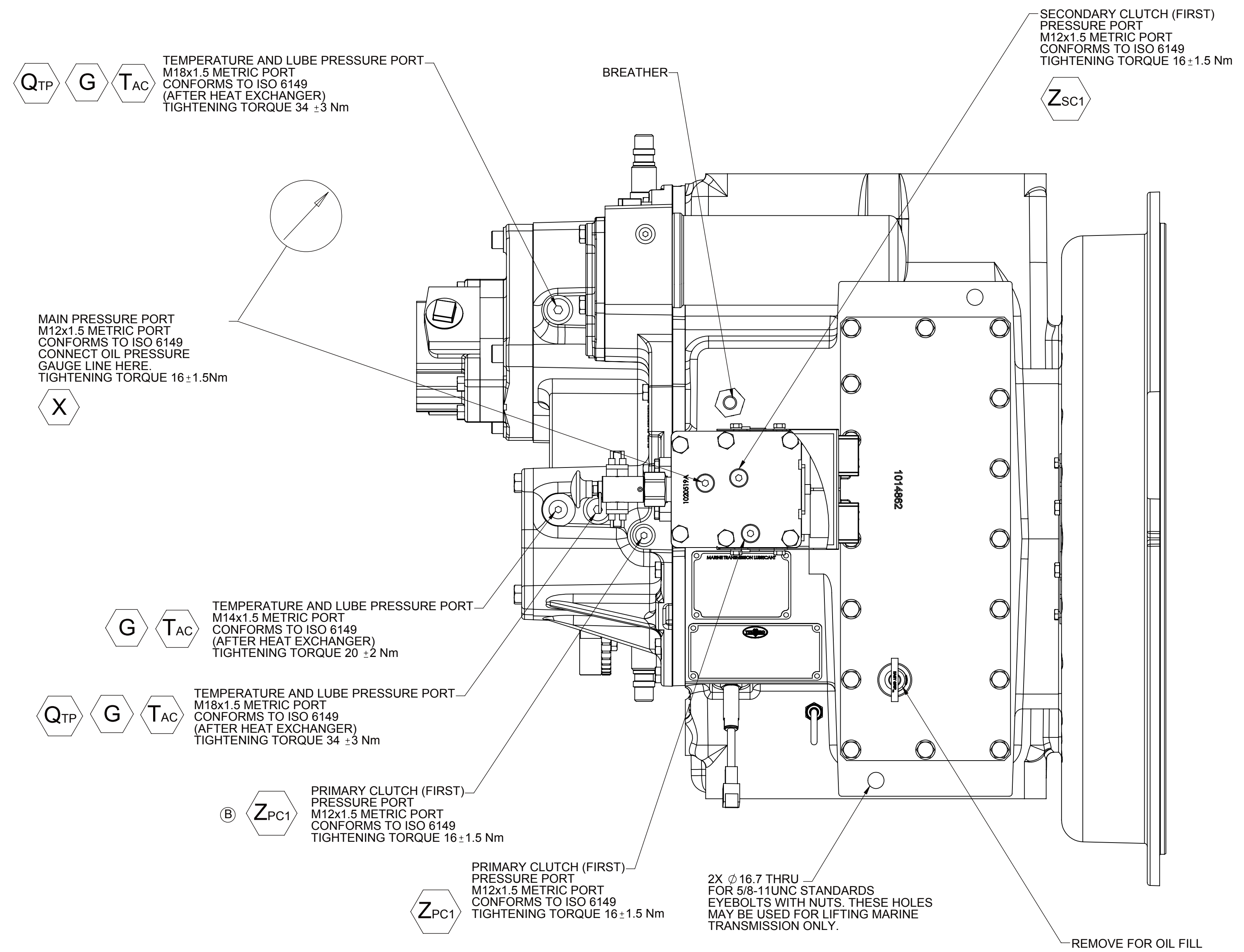
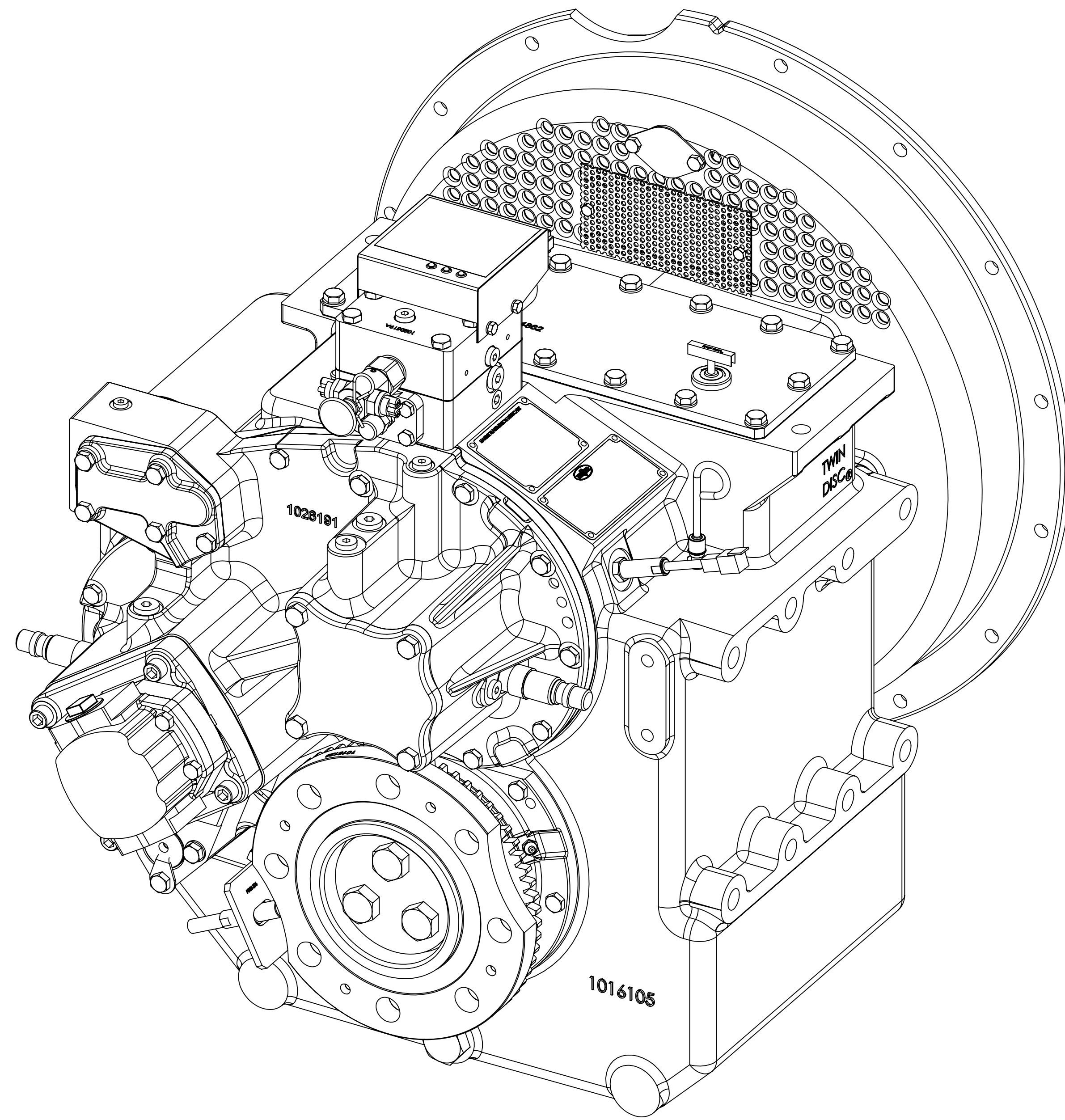
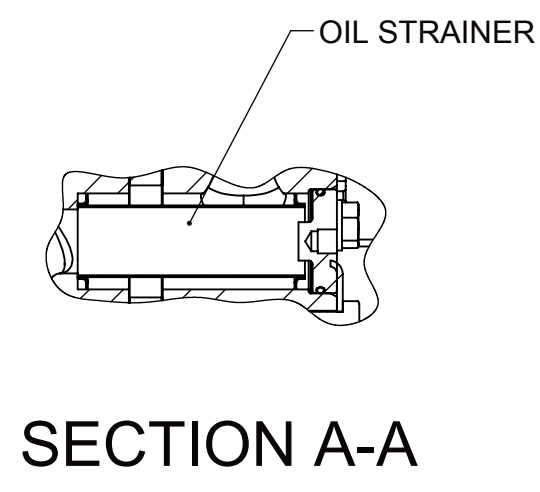


- NOTES:
- A. PROPORTIONAL CONTROL VALVE OPERATION
1. WARNING DO NOT CONNECT VALVE COIL DIRECTLY TO BATTERY/POWER SUPPLY VOLTAGE.
 2. OPERATION TO BE PERFORMED WITH ONLY TWIN DISC CONTROL SYSTEMS OR MODULES.
- B. MANUAL DIRECTIONAL CONTROL VALVE OPERATION
1. WITH MANUAL DIRECTIONAL CONTROL VALVE IN CENTERED POSITION, PUSH TO ENGAGE SECONDARY CLUTCH.
 2. WITH MANUAL DIRECTIONAL CONTROL VALVE IN CENTERED POSITION, PULL TO ENGAGE PRIMARY CLUTCH.
- C. MANUAL DIRECTIONAL CONTROL VALVE MODE SWITCH
1. SWITCH IS NORMALLY CLOSED WHEN MANUAL DIRECTIONAL CONTROL VALVE IS IN THE CENTERED POSITION AND OPEN WHEN LEVER IS ACTUATED FROM CENTERED POSITION.
 2. CURRENT = 20 AMP MAX.
 3. FOR WIRING SCHEMATIC, REFER TO CONTROL MODULE DRAWING.
- D. REFERENCE S930 FOR TWIN DISC REQUIREMENTS FOR PRESSURE AND TEMPERATURE ALARM LEVELS.
- E. ALL POINTS AVAILABLE FOR TESTING CODED

- 1 INPUT GROUP REFERENCE PLANE
- 2 PTO ADAPTER MOUNTING FACE
- 3 LEFT MOUNTING BRACKET FACE
- 4 RIGHT MOUNTING BRACKET FACE



EQUIPMENT SHOWN:
 - MGX-5202SC PER ASSEMBLY 1026316
 - SAE #0 HOUSING
 - GP VALVE WITH EC050 CONTROL MODULE

| | | | | | |
|---|---|--|--|--|---------------------|
| FIRST USE ASSEMBLY: 1026316 FIRST USE MODEL: MGX-5202SC SIMILAR TO: | WEIGHT: 642 UNITS: UNITS PART NO: | MATERIAL: THIRDS ANGLE PROJECTION HEAT TREAT: | DATE: 09/15/2010 SCALE: 1:3 DRAWN BY: DJM CHECKED BY: JCS APPROVED BY: ALC | DATE: 09/15/2010 SCALE: 1:3 DRAWN BY: DJM CHECKED BY: JCS APPROVED BY: ALC | SHEET: 1 OF 1 C. |
|---|---|--|--|--|---------------------|

