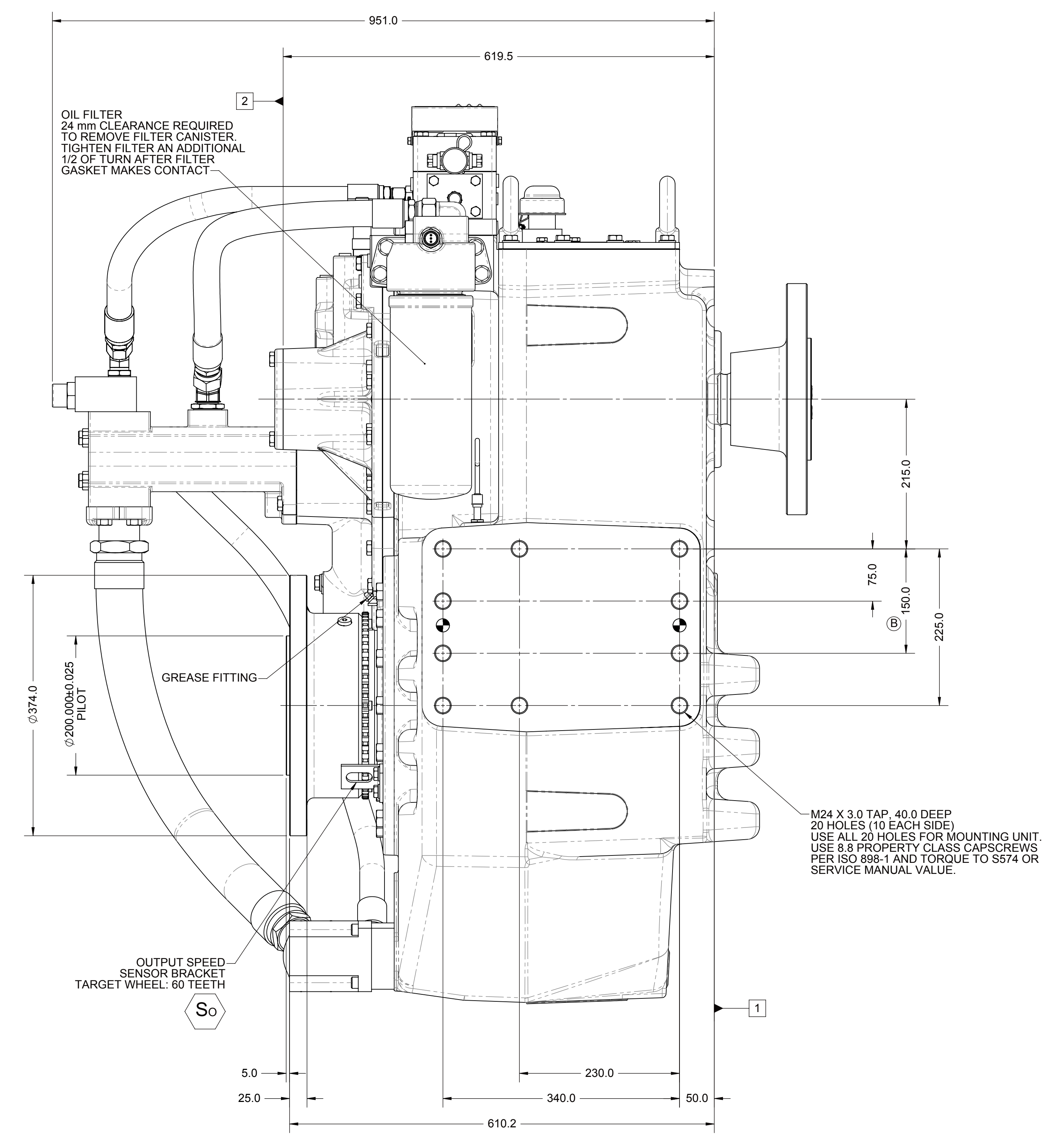
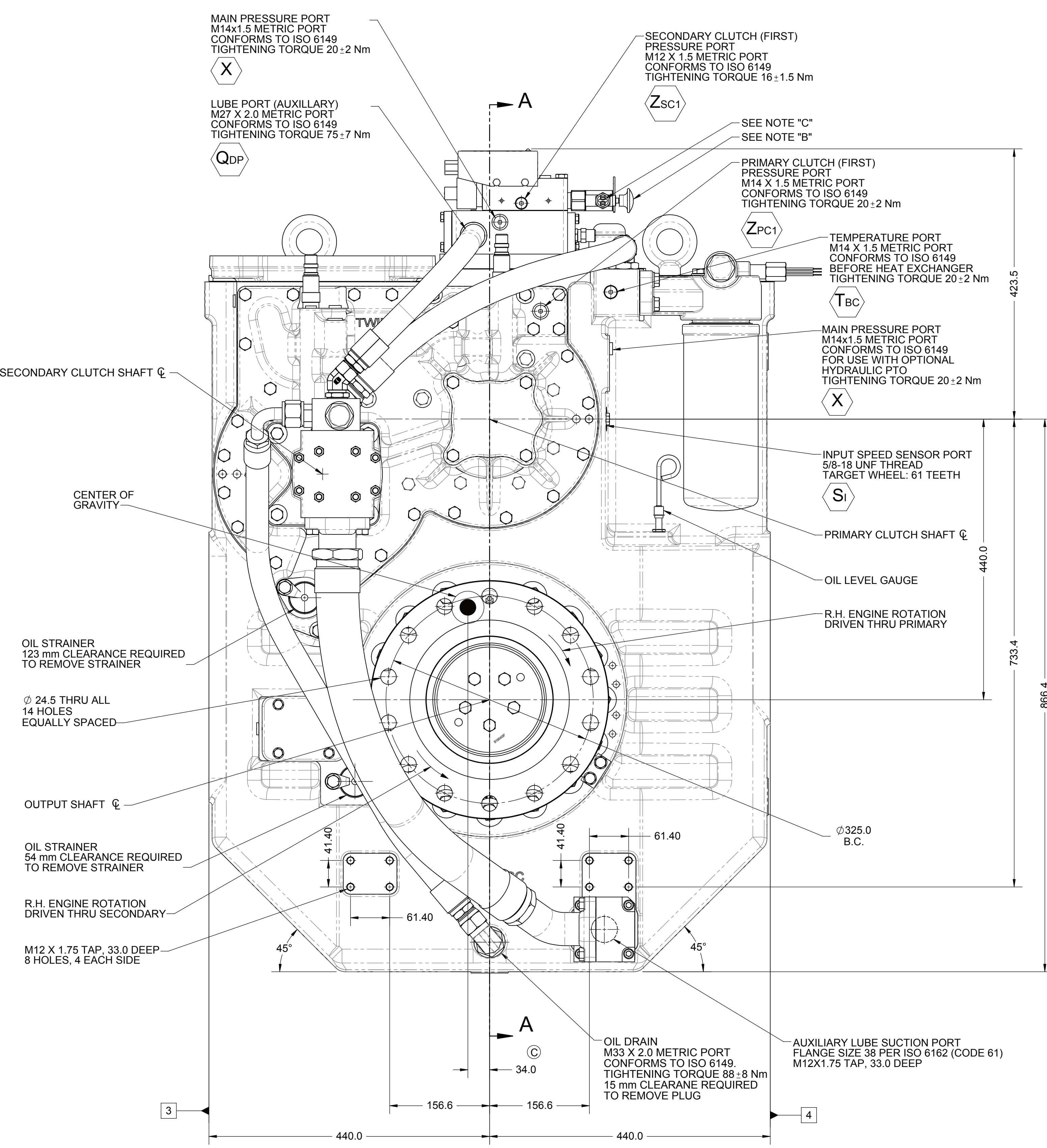
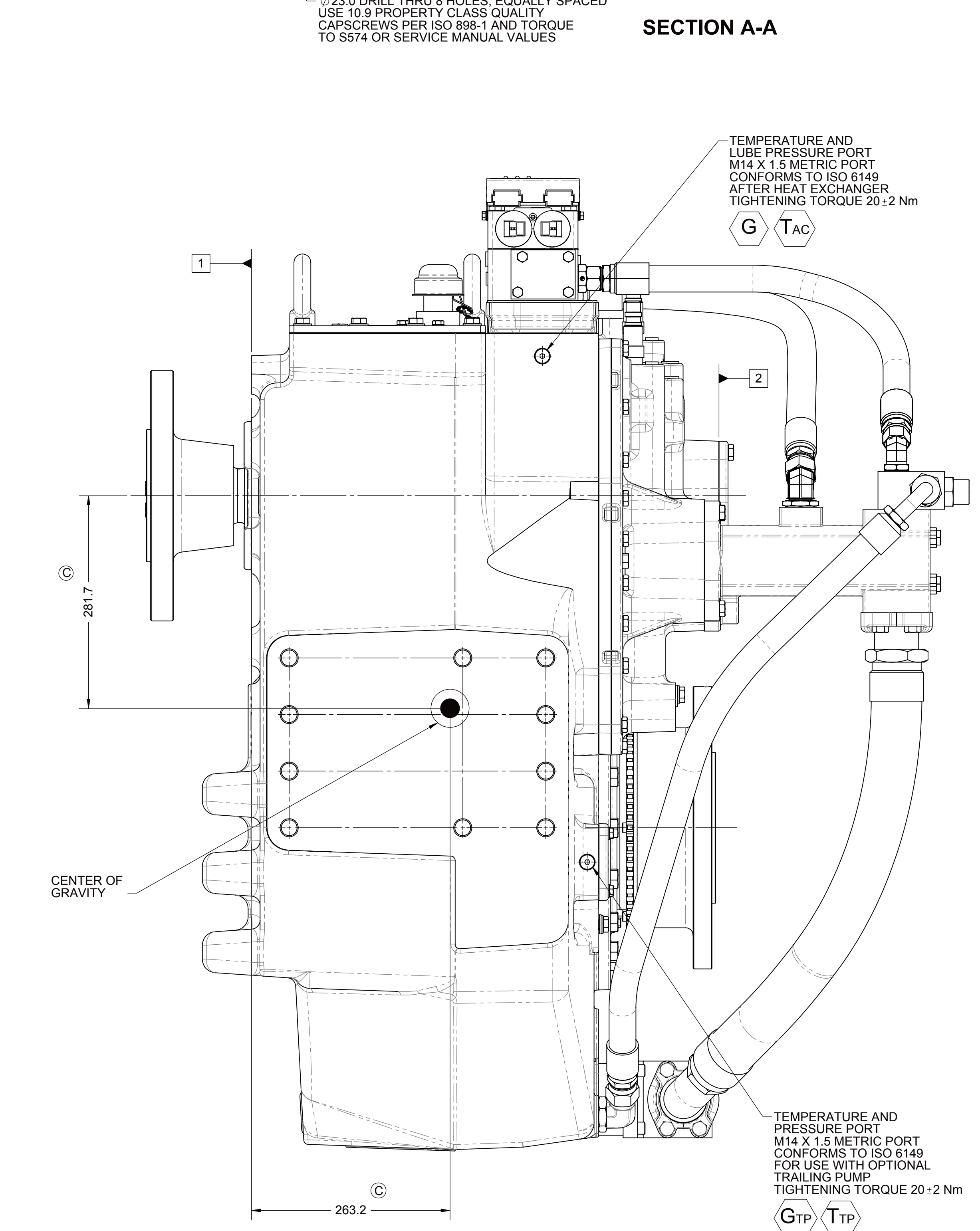
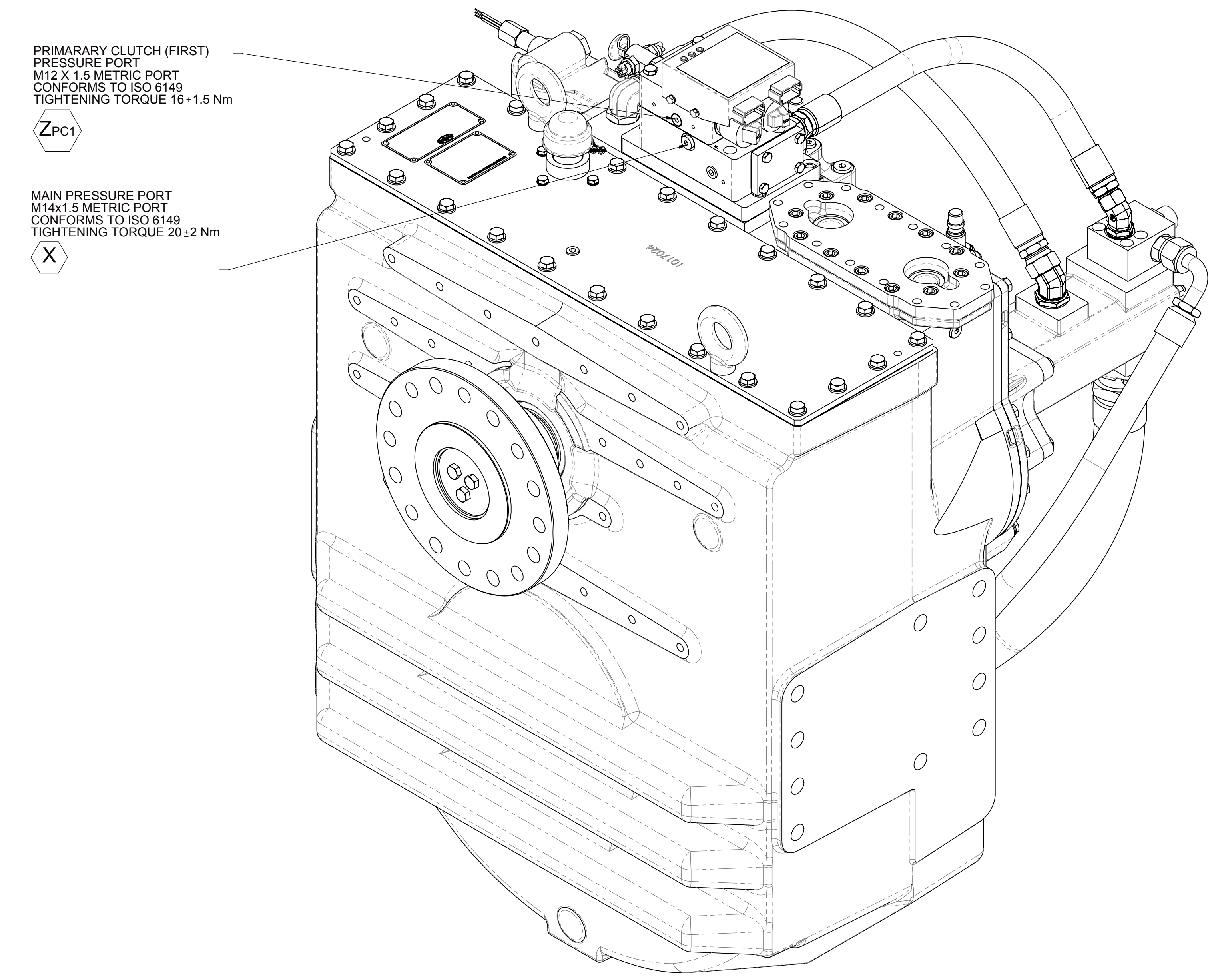
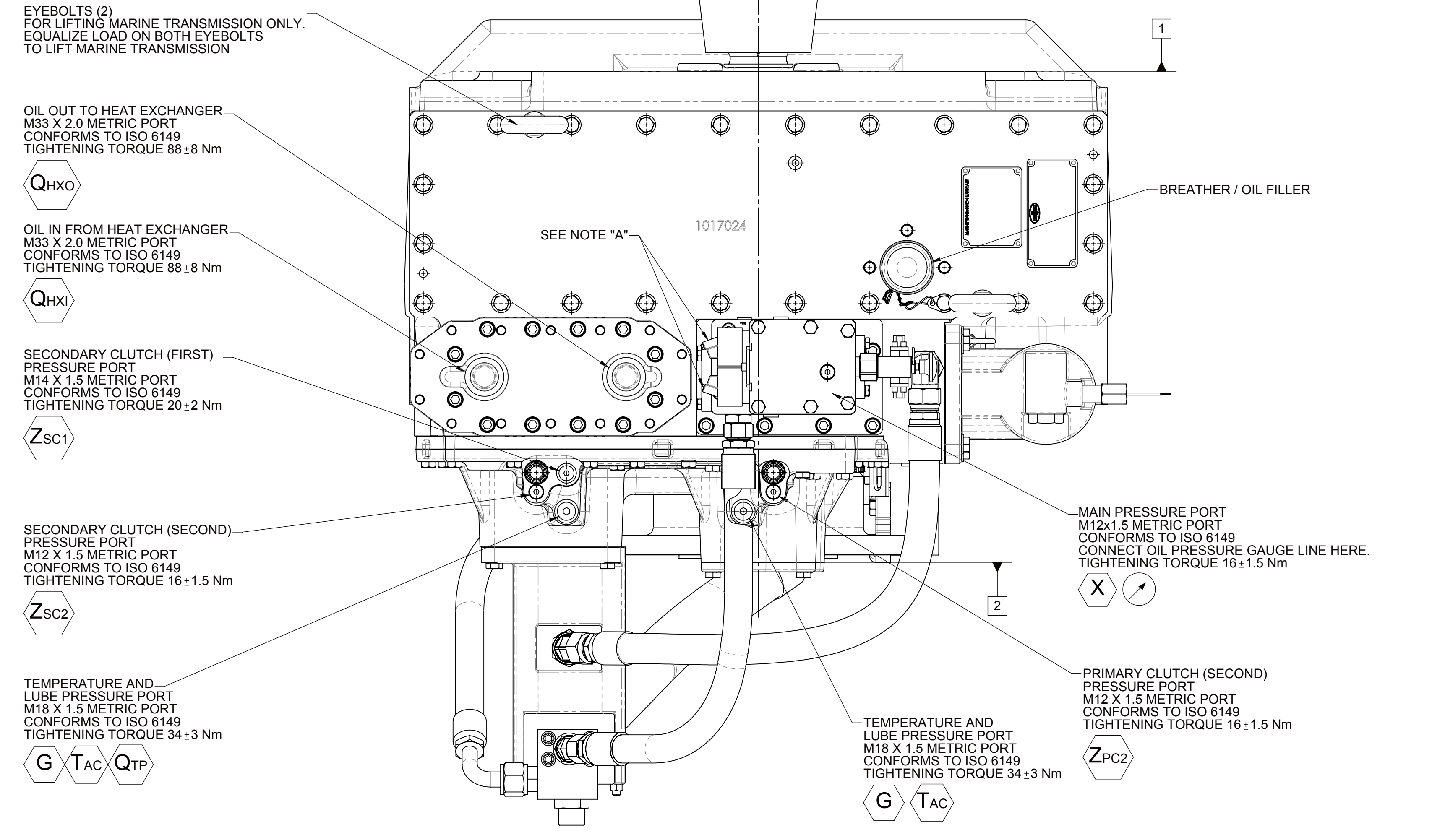
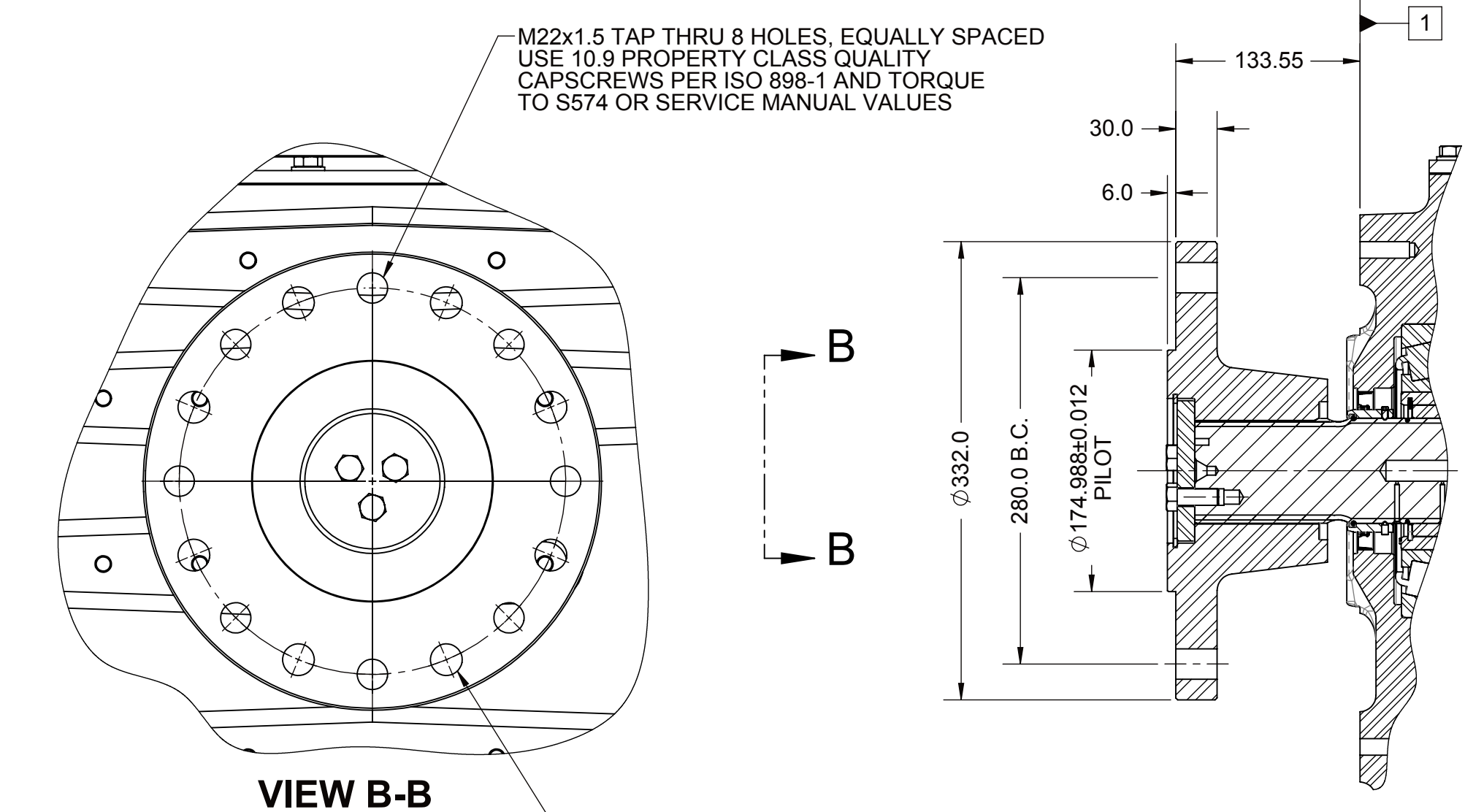


- NOTES:
- A. PROPORTIONAL CONTROL VALVE OPERATION
 1. WARNING DO NOT CONNECT VALVE COIL DIRECTLY TO BATTERY / POWER SUPPLY VOLTAGE.
 2. OPERATION TO BE PERFORMED WITH ONLY TWIN DISC CONTROL SYSTEMS OR MODULES.
- B. MANUAL DIRECTIONAL CONTROL VALVE OPERATION
 1. WITH MANUAL DIRECTIONAL CONTROL VALVE IN CENTERED POSITION, PUSH TO ENGAGE PRIMARY CLUTCH.
 2. WITH MANUAL DIRECTIONAL CONTROL VALVE IN CENTERED POSITION, PULL TO ENGAGE SECONDARY CLUTCH.
- C. MANUAL DIRECTIONAL CONTROL VALVE MODE SWITCH
 1. SWITCH IS NORMALLY CLOSED WHEN MANUAL DIRECTIONAL CONTROL VALVE IS IN THE CENTERED POSITION AND OPEN WHEN LEVER IS ACTUATED FROM CENTERED POSITION.
 2. CURRENT = 20 AMPS MAX.
 3. FOR WIRING SCHEMATIC, REFER TO EC050 CONTROL MODULE DRAWING.
- D. REFERENCE S930 FOR TWIN DISC REQUIREMENTS FOR PRESSURE AND TEMPERATURE ALARM LEVELS.

- 1 INPUT GROUP REFERENCE PLANE
 2 PTO ADAPTER MOUNTING FACE
 3 LEFT MOUNTING BRACKET FACE
 4 RIGHT MOUNTING BRACKET FACE



NOTE:
 ALL POINTS AVAILABLE FOR TESTING ARE CODED

FIRST USE ASSEMBLY: MGX-5321DC PER 1022203B ASSEMBLY		WEIGHT: 1618.76 kg	THIRD ANGLE PROJECTION	DATE: 01/11/2012	REVISION: 1
SIMILAR TO: 1017769 FREESTANDING INPUT HUB				SCALE: 1:4	DESIGNED BY: NK
EQUIPMENT SHOWN: - MGX-5321DC PER 1022203B ASSEMBLY - 1017769 FREESTANDING INPUT HUB - GP VALVE WITH EC050 PROFILE MODULE - DITCH PLATE FOR CUSTOMER SUPPLIED HEAT EXCHANGER - 1023665 PUMP GROUP FOR DP APPLICATIONS				CHECKED BY: ALC	DATE: 01/11/2012
MATERIAL: UNFINISHED STEEL				APPROVED BY: ALC	DATE: 01/11/2012
DESCRIPTION: INSTALLATION MGX-5321DC					

1026064D
 SHEET 1 OF 1