

NOTES:

- A. PROPORTIONAL CONTROL VALVE OPERATION
 1. WARNING DO NOT CONNECT VALVE COIL DIRECTLY TO BATTERY / POWER SUPPLY VOLTAGAGE.
 2. OPERATION TO BE PERFORMED WITH ONLY TWIN DISC CONTROL SYSTEMS OR MODULES.
- B. MANUAL DIRECTIONAL CONTROL VALVE OPERATION
 1. WITH MANUAL DIRECTIONAL CONTROL VALVE IN CENTERED POSITION, PUSH TO ENGAGE PRIMARY CLUTCH.
 2. WITH MANUAL DIRECTIONAL CONTROL VALVE IN CENTERED POSITION, PULL TO ENGAGE SECONDARY CLUTCH.
- C. MANUAL DIRECTIONAL CONTROL VALVE MODE SWITCH
 1. SWITCH IS NORMALLY CLOSED WHEN MANUAL DIRECTIONAL CONTROL VALVE IS IN THE CENTERED POSITION AND OPEN WHEN LEVER IS ACTUATED FROM CENTERED POSITION.
 2. CURRENT = 20 AMPS MAX.
 3. FOR WIRING SCHEMATIC, REFER TO EC050 CONTROL MODULE DRAWING.
- D. REFERENCE S830 FOR TWIN DISC REQUIREMENTS FOR PRESSURE AND TEMPERATURE ALARM LEVELS.

- 1 INPUT GROUP REFERENCE PLANE
 2 PTO ADAPTER MOUNTING FACE
 3 LEFT MOUNTING BRACKET FACE
 4 RIGHT MOUNTING BRACKET FACE

EYEBOLTS (2)
 FOR LIFTING MARINE TRANSMISSION.
 EQUALIZE LOAD ON BOTH EYEBOLTS
 TO LIFT MARINE TRANSMISSION

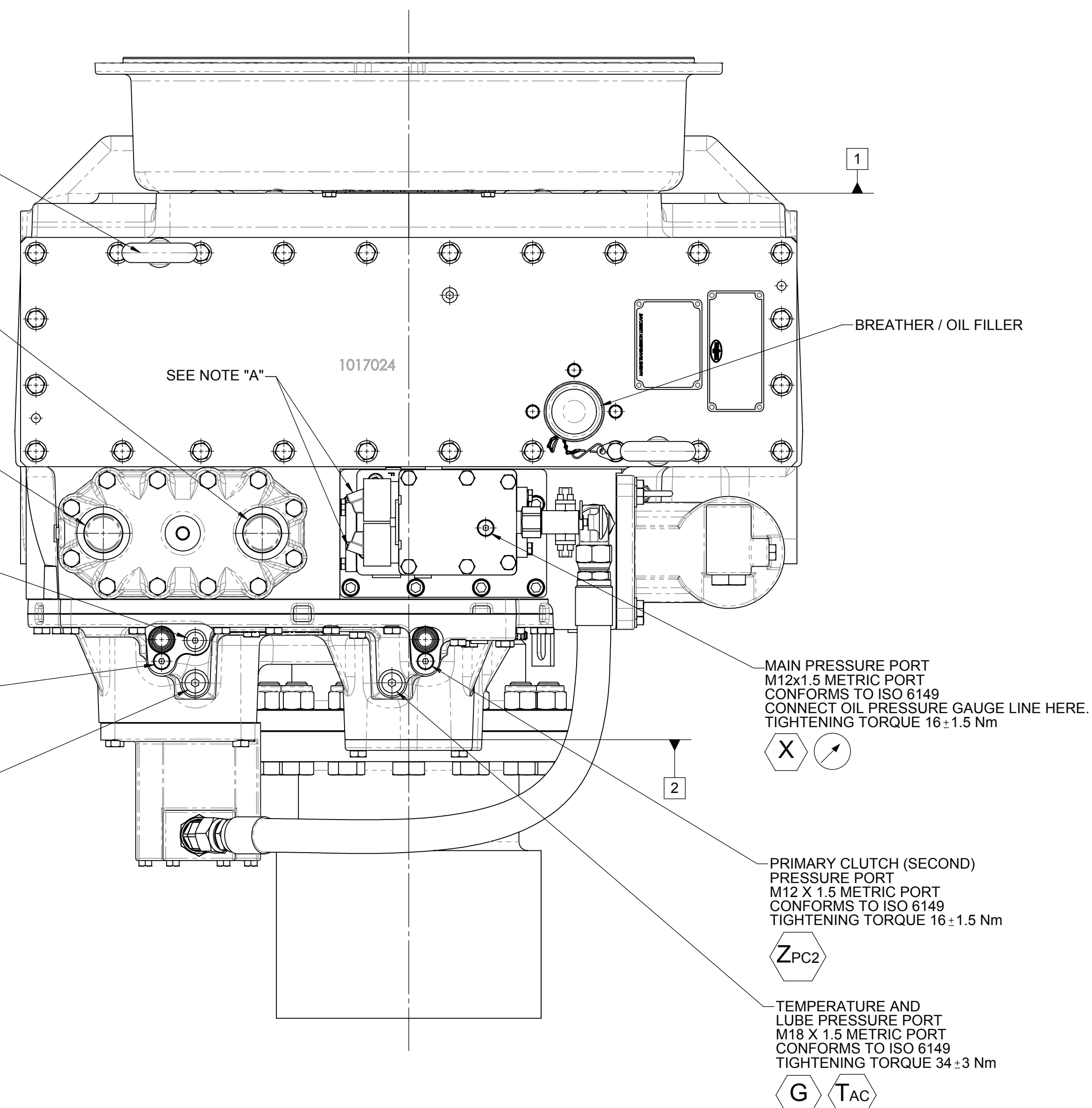
WATER OUT FROM HEAT EXCHANGER
 M42 X 2.0 METRIC PORT
 CONFORMS TO ISO 6149
 TIGHTENING TORQUE 108-10 Nm

WATER IN TO HEAT EXCHANGER
 M42 X 2.0 METRIC PORT
 CONFORMS TO ISO 6149
 TIGHTENING TORQUE 108-10 Nm

SECONDARY CLUTCH (FIRST)
 PRESSURE PORT
 M14 X 1.5 METRIC PORT
 CONFORMS TO ISO 6149
 TIGHTENING TORQUE 20:2 Nm

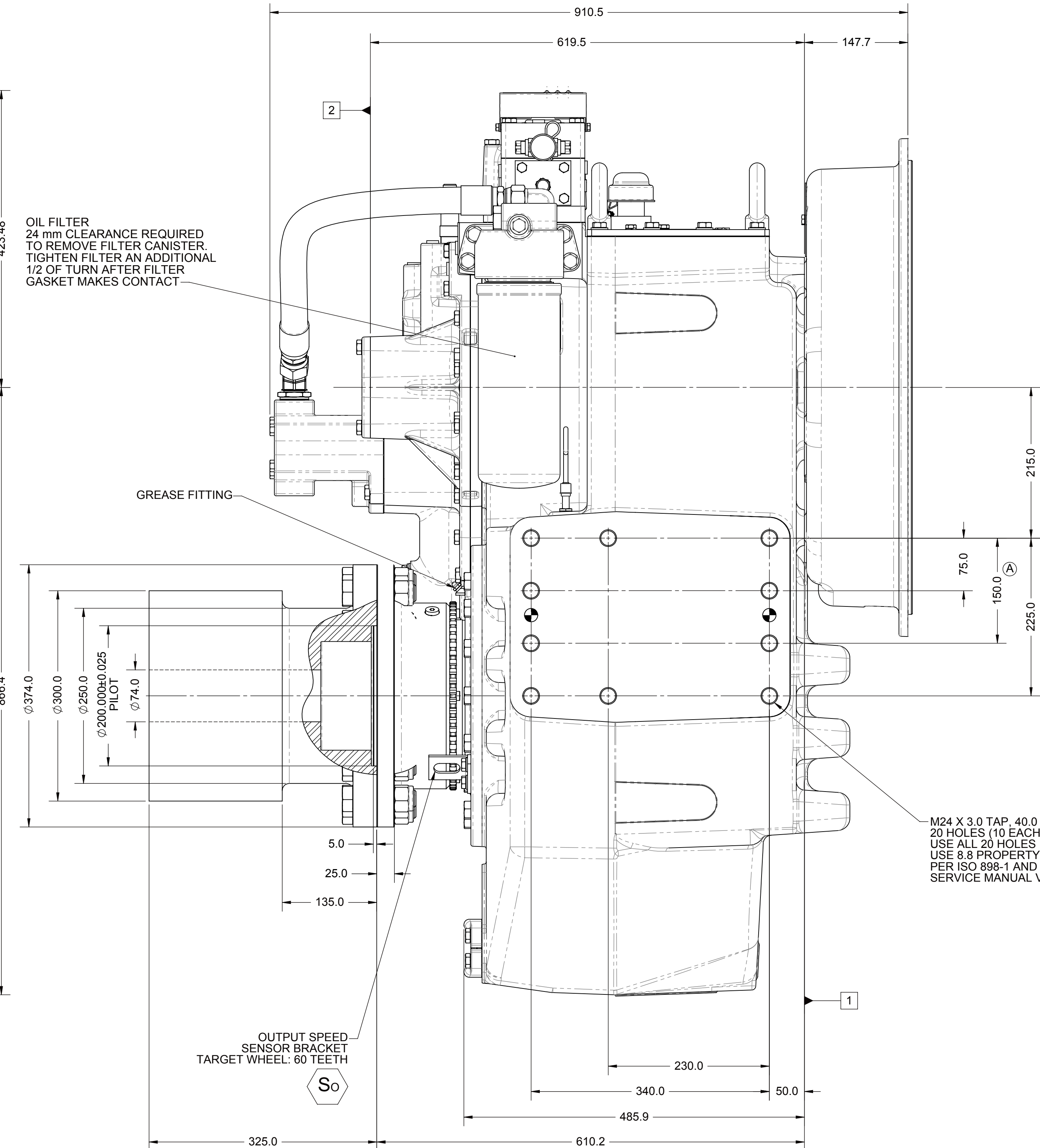
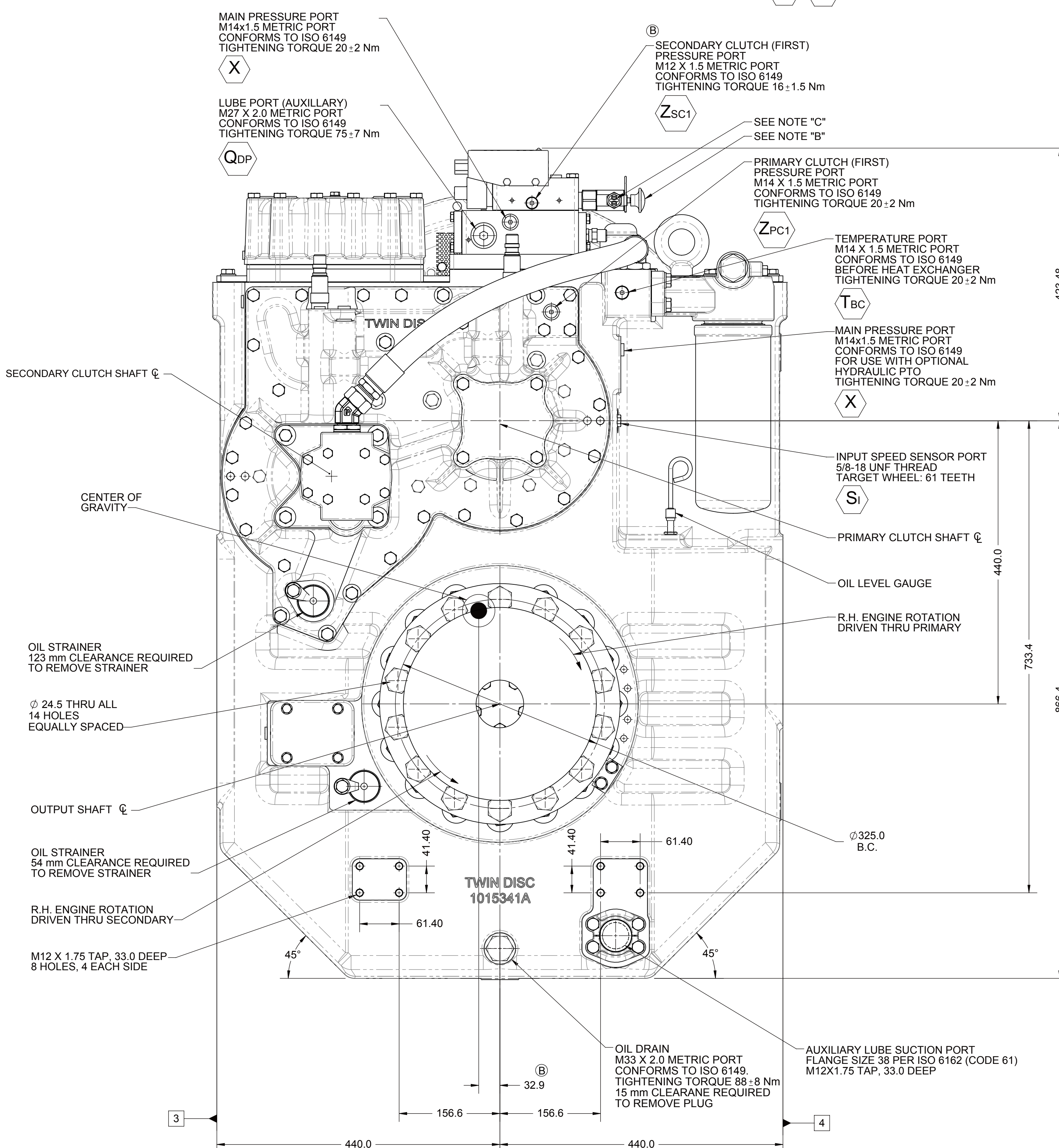
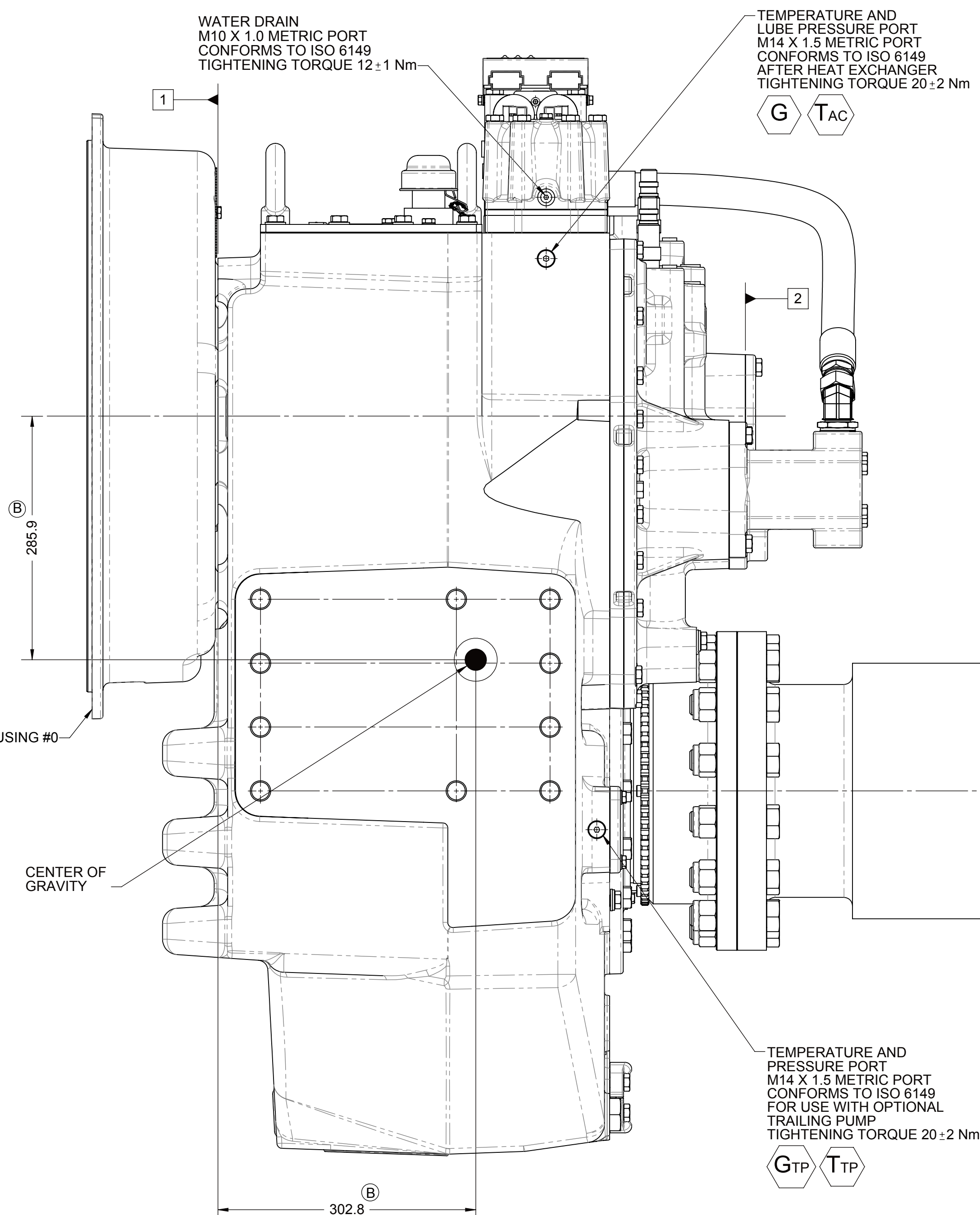
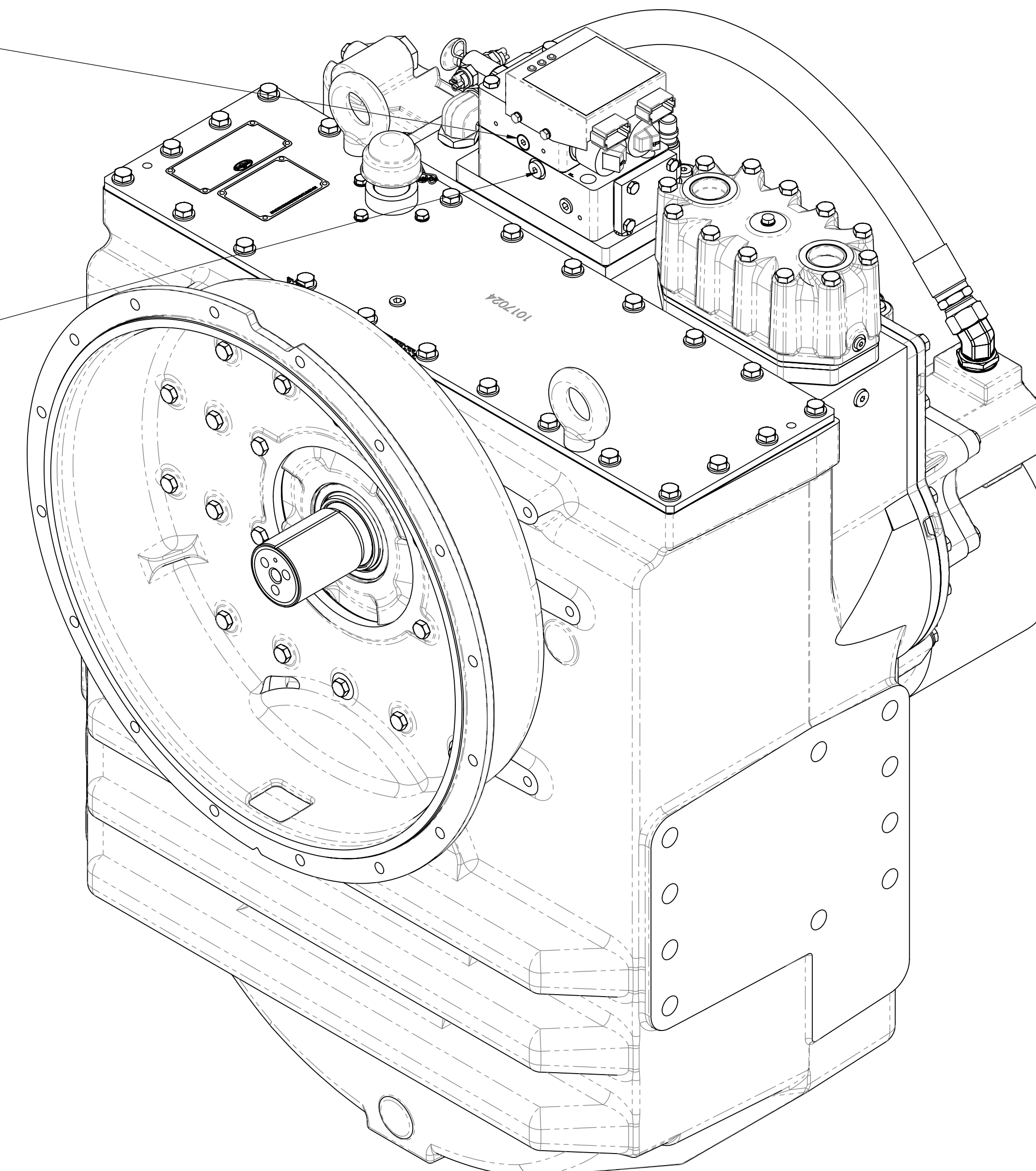
SECONDARY CLUTCH (SECOND)
 PRESSURE PORT
 M12 X 1.5 METRIC PORT
 CONFORMS TO ISO 6149
 TIGHTENING TORQUE 16:1.5 Nm

TEMPERATURE AND
 LUBE PRESSURE PORT
 M18 X 1.5 METRIC PORT
 CONFORMS TO ISO 6149
 TIGHTENING TORQUE 34:3 Nm



PRIMARY CLUTCH (FIRST)
 PRESSURE PORT
 M12 X 1.5 METRIC PORT
 CONFORMS TO ISO 6149
 TIGHTENING TORQUE 16:1.5 Nm

MAIN PRESSURE PORT
 M14x1.5 METRIC PORT
 CONFORMS TO ISO 6149
 TIGHTENING TORQUE 20:2 Nm



NOTE:

ALL POINTS AVAILABLE FOR TESTING ARE CODED

EQUIPMENT SHOWN:
 - MGX-532 IDC PER 1022203B ASSEMBLY
 - SAE40 FRONT HOUSING
 - GP VALVE WITH EC050 MODULE
 - RAW WATER HEAT EXCHANGER
 - 1017084 COMPANION FLANGE ASSEMBLY

REV: 1	CHANGE NO:	DATE: 04/12/2010	SCALE: 1:4	DRAWN BY: YU	CHECKED BY: JCS	APPROVED BY: ALC	DATE: 04/12/2010	SCALE: 1:4	DRAWN BY: YU	CHECKED BY: JCS	APPROVED BY: ALC
FIRST USE ASSEMBLY: 1796.92			MATERIAL: 304 STAINLESS STEEL			HEAT TREAT: NONE			DATE: 04/12/2010		
SIMILAR TO: METRIC			UNLESS OTHERWISE SPECIFIED, USE THE FOLLOWING DIMENSIONS:			DIMENSIONS ARE IN MILLIMETERS			TOLERANCES ARE:		
			FRACTIONS: 1/16, 1/8, 3/16, 1/4, 3/8, 1/2, 5/8, 3/4, 7/8, 1			DECIMALS: 0.1, 0.2, 0.5, 1, 2, 3, 5, 10, 20, 30, 50, 100			ANGLES: 15, 30, 45, 60, 75, 90, 105, 120, 135, 150, 165, 180		
			ALL ANGLES ARE TO BE SHOWN UNLESS OTHERWISE SPECIFIED			GEOMETRIC TOLERANCES ARE:			PER ASME Y14.5-2009		
			THIS DRAWING IS THE PROPERTY OF METRIC INC. AND IS NOT TO BE REPRODUCED OR TRANSMITTED IN ANY FORM OR BY ANY MEANS, ELECTRONIC OR MECHANICAL, INCLUDING PHOTOCOPYING, RECORDING, OR BY ANY INFORMATION STORAGE AND RETRIEVAL SYSTEM.			DESCRIPTION: INSTALLATION			MGX-532 IDC		
			PART NO: 1026064A			SHEET: 1 OF 1			REV: B		