

NOTES:

- A. PROPORTIONAL CONTROL VALVE OPERATION
 1. WARNING DO NOT CONNECT VALVE COIL DIRECTLY TO BATTERY / POWER SUPPLY VOLTAGE.
 2. OPERATION TO BE PERFORMED WITH ONLY TWIN DISC CONTROL SYSTEMS OR MODULES.
- B. MANUAL DIRECTIONAL CONTROL VALVE OPERATION
 1. WITH MANUAL DIRECTIONAL CONTROL VALVE IN CENTERED POSITION, PUSH TO ENGAGE PRIMARY CLUTCH.
 2. WITH MANUAL DIRECTIONAL CONTROL VALVE IN CENTERED POSITION, PULL TO ENGAGE SECONDARY CLUTCH.
- C. MANUAL DIRECTIONAL CONTROL VALVE MODE SWITCH
 1. SWITCH IS NORMALLY CLOSED WHEN MANUAL DIRECTIONAL CONTROL VALVE IS IN THE CENTERED POSITION AND OPEN WHEN LEVER IS ACTUATED FROM CENTERED POSITION.
 2. CURRENT = 20 AMPS MAX.
 3. FOR WIRING SCHEMATIC, REFER TO EC050 CONTROL MODULE DRAWING.
- D. REFERENCE S930 FOR TWIN DISC REQUIREMENTS FOR PRESSURE AND TEMPERATURE ALARM LEVELS.

- 1 INPUT GROUP REFERENCE PLANE
 2 PTO ADAPTER MOUNTING FACE
 3 LEFT MOUNTING BRACKET FACE
 4 RIGHT MOUNTING BRACKET FACE

EYEBOLTS (2)
 FOR LIFTING MARINE TRANSMISSION ONLY.
 EQUALIZE LOAD ON BOTH EYEBOLTS
 TO LIFT MARINE TRANSMISSION

WATER OUT FROM HEAT EXCHANGER
 M42 X 2.0 METRIC PORT
 CONFORMS TO ISO 6149
 TIGHTENING TORQUE 108-10 Nm

WATER IN TO HEAT EXCHANGER
 M42 X 2.0 METRIC PORT
 CONFORMS TO ISO 6149
 TIGHTENING TORQUE 108-10 Nm

SECONDARY CLUTCH (FIRST)
 PRESSURE PORT
 M14 X 1.5 METRIC PORT
 CONFORMS TO ISO 6149
 TIGHTENING TORQUE 20:2 Nm

SECONDARY CLUTCH (SECOND)
 PRESSURE PORT
 M12 X 1.5 METRIC PORT
 CONFORMS TO ISO 6149
 TIGHTENING TORQUE 16:1.5 Nm

TEMPERATURE AND
 LUBE PRESSURE PORT
 M18 X 1.5 METRIC PORT
 CONFORMS TO ISO 6149
 TIGHTENING TORQUE 34:3 Nm

G TAc QTP

SEE NOTE "A"
 1017024

BREATHER / OIL FILLER

MAIN PRESSURE PORT
 M12x1.5 METRIC PORT
 CONFORMS TO ISO 6149
 CONNECT OIL PRESSURE GAUGE LINE HERE.
 TIGHTENING TORQUE 16:1.5 Nm

X

PRIMARY CLUTCH (SECOND)
 PRESSURE PORT
 M12 X 1.5 METRIC PORT
 CONFORMS TO ISO 6149
 TIGHTENING TORQUE 16:1.5 Nm

ZPc2

TEMPERATURE AND
 LUBE PRESSURE PORT
 M18 X 1.5 METRIC PORT
 CONFORMS TO ISO 6149
 TIGHTENING TORQUE 34:3 Nm

G TAc

MAIN PRESSURE PORT
 M14x1.5 METRIC PORT
 CONFORMS TO ISO 6149
 TIGHTENING TORQUE 20:2 Nm

X

LUBE PORT (AUXILIARY)
 M27 X 2.0 METRIC PORT
 CONFORMS TO ISO 6149
 TIGHTENING TORQUE 75:7 Nm

QDP

SECONDARY CLUTCH (FIRST)
 PRESSURE PORT
 M12 X 1.5 METRIC PORT
 CONFORMS TO ISO 6149
 TIGHTENING TORQUE 16:1.5 Nm

ZSc1

SEE NOTE "C"
 SEE NOTE "B"

PRIMARY CLUTCH (FIRST)
 PRESSURE PORT
 M14 X 1.5 METRIC PORT
 CONFORMS TO ISO 6149
 TIGHTENING TORQUE 20:2 Nm

ZPc1

TEMPERATURE PORT
 M14 X 1.5 METRIC PORT
 CONFORMS TO ISO 6149
 BEFORE HEAT EXCHANGER
 TIGHTENING TORQUE 20:2 Nm

Tbc

MAIN PRESSURE PORT
 M14x1.5 METRIC PORT
 CONFORMS TO ISO 6149
 FOR USE WITH OPTIONAL
 HYDRAULIC PTO
 TIGHTENING TORQUE 20:2 Nm

X

INPUT SPEED SENSOR PORT
 S8-18 UNF THREAD
 TARGET WHEEL, 61 TEETH

S1

PRIMARY CLUTCH SHAFT ϕ

OIL LEVEL GAUGE

R.H. ENGINE ROTATION
 DRIVEN THRU PRIMARY

0.325.0
 B.C.

SECONDARY CLUTCH SHAFT ϕ

CENTER OF
 GRAVITY

OIL STRAINER
 123 mm CLEARANCE REQUIRED
 TO REMOVE STRAINER

ϕ 24.5 THRU ALL
 14 HOLES
 EQUALLY SPACED

OUTPUT SHAFT ϕ

OIL STRAINER
 54 mm CLEARANCE REQUIRED
 TO REMOVE STRAINER

R.H. ENGINE ROTATION
 DRIVEN THRU SECONDARY

M12 X 1.75 TAP, 33.0 DEEP
 8 HOLES, 4 EACH SIDE

TEMPERATURE AND
 PRESSURE PORT
 M14 X 1.5 METRIC PORT
 CONFORMS TO ISO 6149
 FOR USE WITH OPTIONAL
 TRAILING PUMP
 TIGHTENING TORQUE 20:2 Nm

GTP TTP

WATER DRAIN
 M10 X 1.0 METRIC PORT
 CONFORMS TO ISO 6149
 TIGHTENING TORQUE 12:1 Nm

TEMPERATURE AND
 LUBE PRESSURE PORT
 M14 X 1.5 METRIC PORT
 CONFORMS TO ISO 6149
 AFTER HEAT EXCHANGER
 TIGHTENING TORQUE 20:2 Nm

G TAc

SAE HOUSING #0

CENTER OF
 GRAVITY

257.6

TWIN DISC
 1015341A

OIL DRAIN
 M33 X 2.0 METRIC PORT
 CONFORMS TO ISO 6149
 TIGHTENING TORQUE 88:8 Nm
 15 mm CLEARANCE REQUIRED
 TO REMOVE PLUG

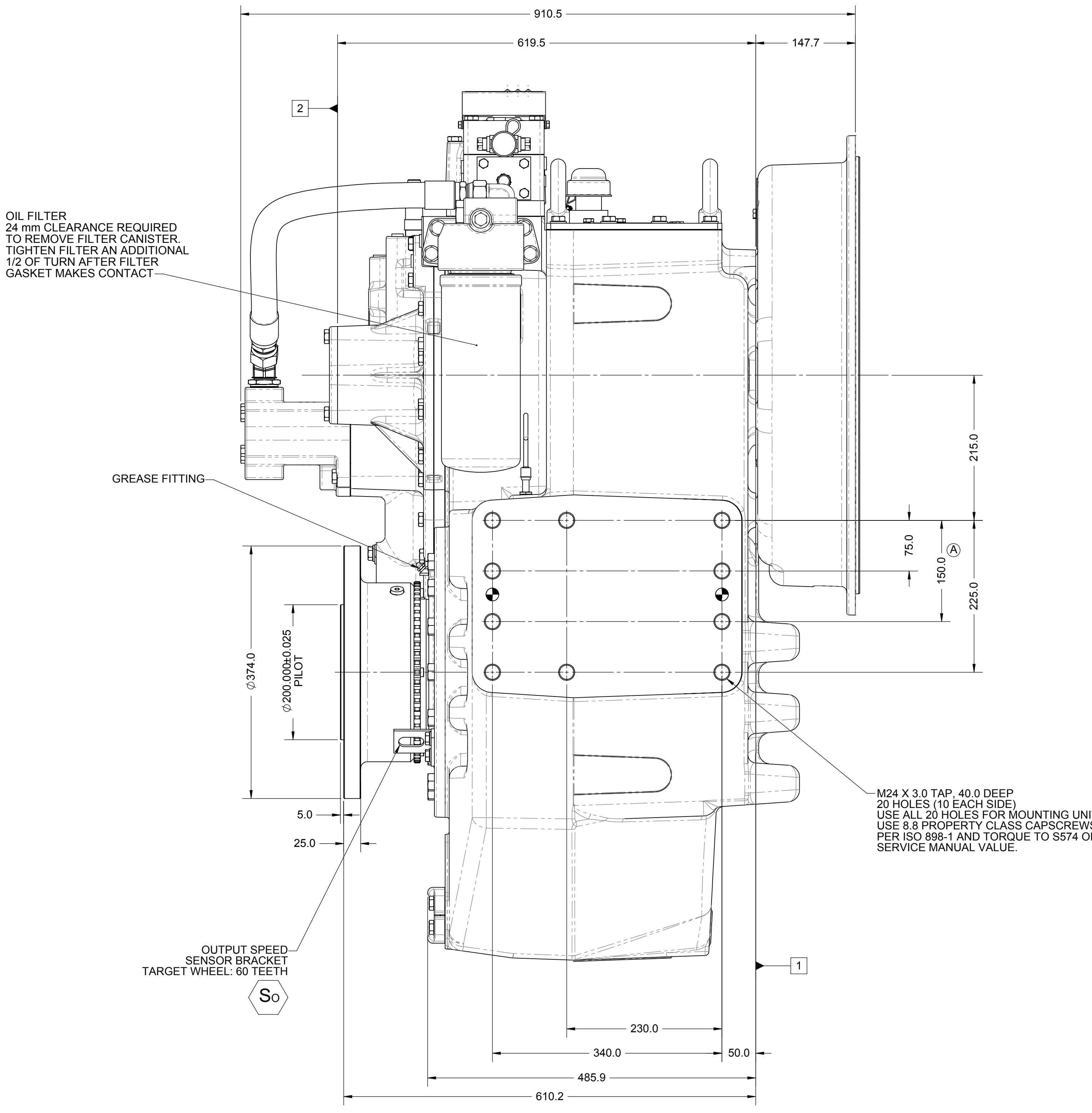
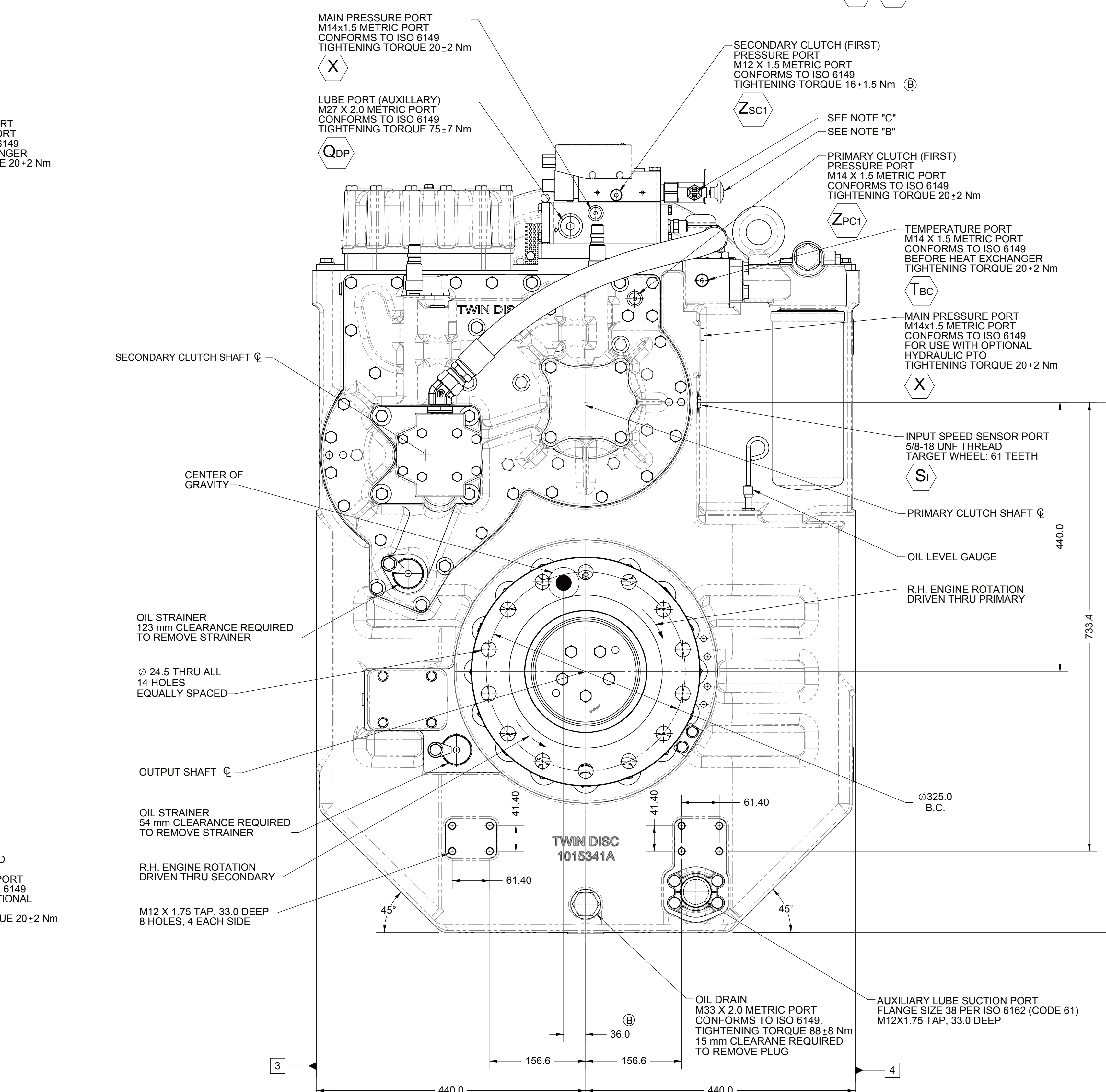
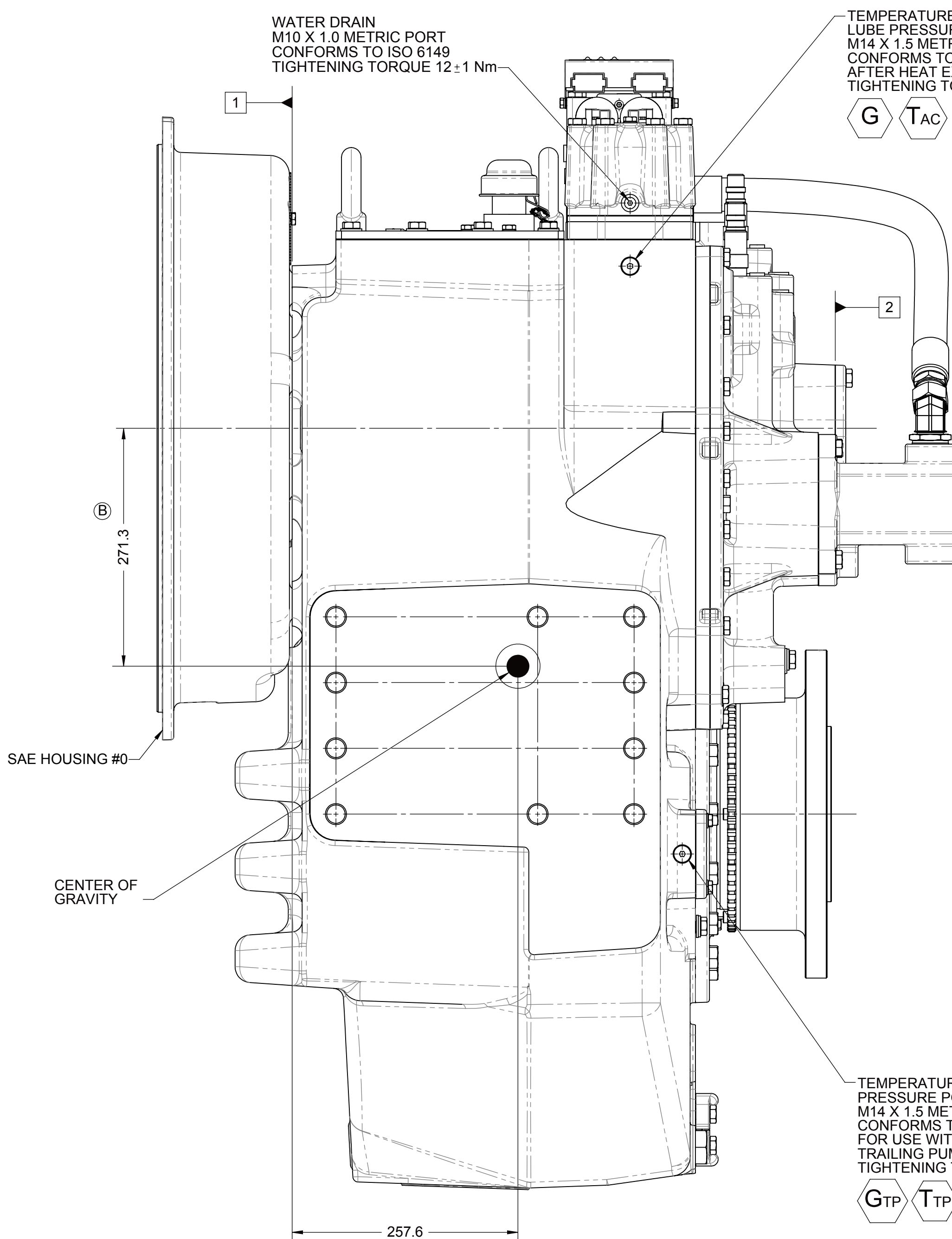
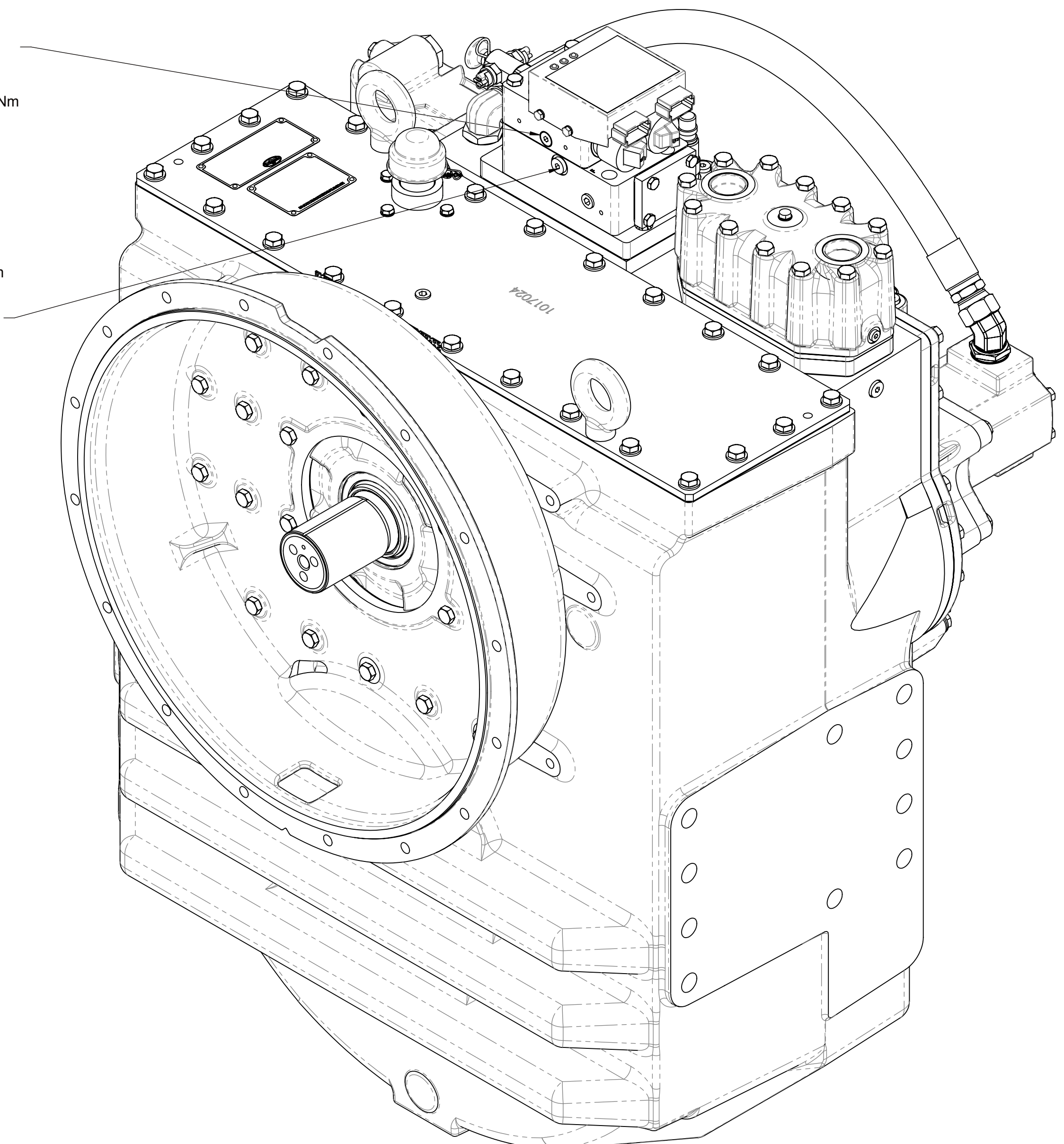
AUXILIARY LUBE SUCTION PORT
 FLANGE SIZE 38 PER ISO 6162 (CODE 61)
 M12X1.75 TAP, 33.0 DEEP

PRIMARY CLUTCH (FIRST)
 PRESSURE PORT
 M12 X 1.5 METRIC PORT
 CONFORMS TO ISO 6149
 TIGHTENING TORQUE 16:1.5 Nm

ZPc1

MAIN PRESSURE PORT
 M14x1.5 METRIC PORT
 CONFORMS TO ISO 6149
 TIGHTENING TORQUE 20:2 Nm

X



NOTE:

ALL POINTS AVAILABLE FOR TESTING ARE CODED

EQUIPMENT SHOWN:
 - MGX5321DC PER 1022203B ASSEMBLY
 - SAE40 FRONT HOUSING
 - GP VALVE WITH EC050 MODULE
 - RAW WATER HEAT EXCHANGER

REV	CHANGE NO.	DATE		
1		04/06/2010		
2		04/06/2010		
3		04/06/2010		
4		04/06/2010		
5		04/06/2010		
6		04/06/2010		
7		04/06/2010		
8		04/06/2010		
9		04/06/2010		
10		04/06/2010		
11		04/06/2010		
12		04/06/2010		
13		04/06/2010		
14		04/06/2010		
15		04/06/2010		
16		04/06/2010		
17		04/06/2010		
18		04/06/2010		
19		04/06/2010		
20		04/06/2010		
21		04/06/2010		
22		04/06/2010		
23		04/06/2010		
24		04/06/2010		
25		04/06/2010		
26		04/06/2010		
27		04/06/2010		
28		04/06/2010		
29		04/06/2010		
30		04/06/2010		
31		04/06/2010		
32		04/06/2010		
33		04/06/2010		
34		04/06/2010		
35		04/06/2010		
36		04/06/2010		
37		04/06/2010		
38		04/06/2010		
39		04/06/2010		
40		04/06/2010		
41		04/06/2010		
42		04/06/2010		
43		04/06/2010		
44		04/06/2010		
45		04/06/2010		
46		04/06/2010		
47		04/06/2010		
48		04/06/2010		
49		04/06/2010		
50		04/06/2010		
51		04/06/2010		
52		04/06/2010		
53		04/06/2010		
54		04/06/2010		
55		04/06/2010		
56		04/06/2010		
57		04/06/2010		
58		04/06/2010		
59		04/06/2010		
60		04/06/2010		
61		04/06/2010		
62		04/06/2010		
63		04/06/2010		
64		04/06/2010		
65		04/06/2010		
66		04/06/2010		
67		04/06/2010		
68		04/06/2010		
69		04/06/2010		
70		04/06/2010		
71		04/06/2010		
72		04/06/2010		
73		04/06/2010		
74		04/06/2010		
75		04/06/2010		
76		04/06/2010		
77		04/06/2010		
78		04/06/2010		
79		04/06/2010		
80		04/06/2010		
81		04/06/2010		
82		04/06/2010		
83		04/06/2010		
84		04/06/2010		
85		04/06/2010		
86		04/06/2010		
87		04/06/2010		
88		04/06/2010		
89		04/06/2010		
90		04/06/2010		
91		04/06/2010		
92		04/06/2010		
93		04/06/2010		
94		04/06/2010		
95		04/06/2010		
96		04/06/2010		
97		04/06/2010		
98		04/06/2010		
99		04/06/2010		
100		04/06/2010		