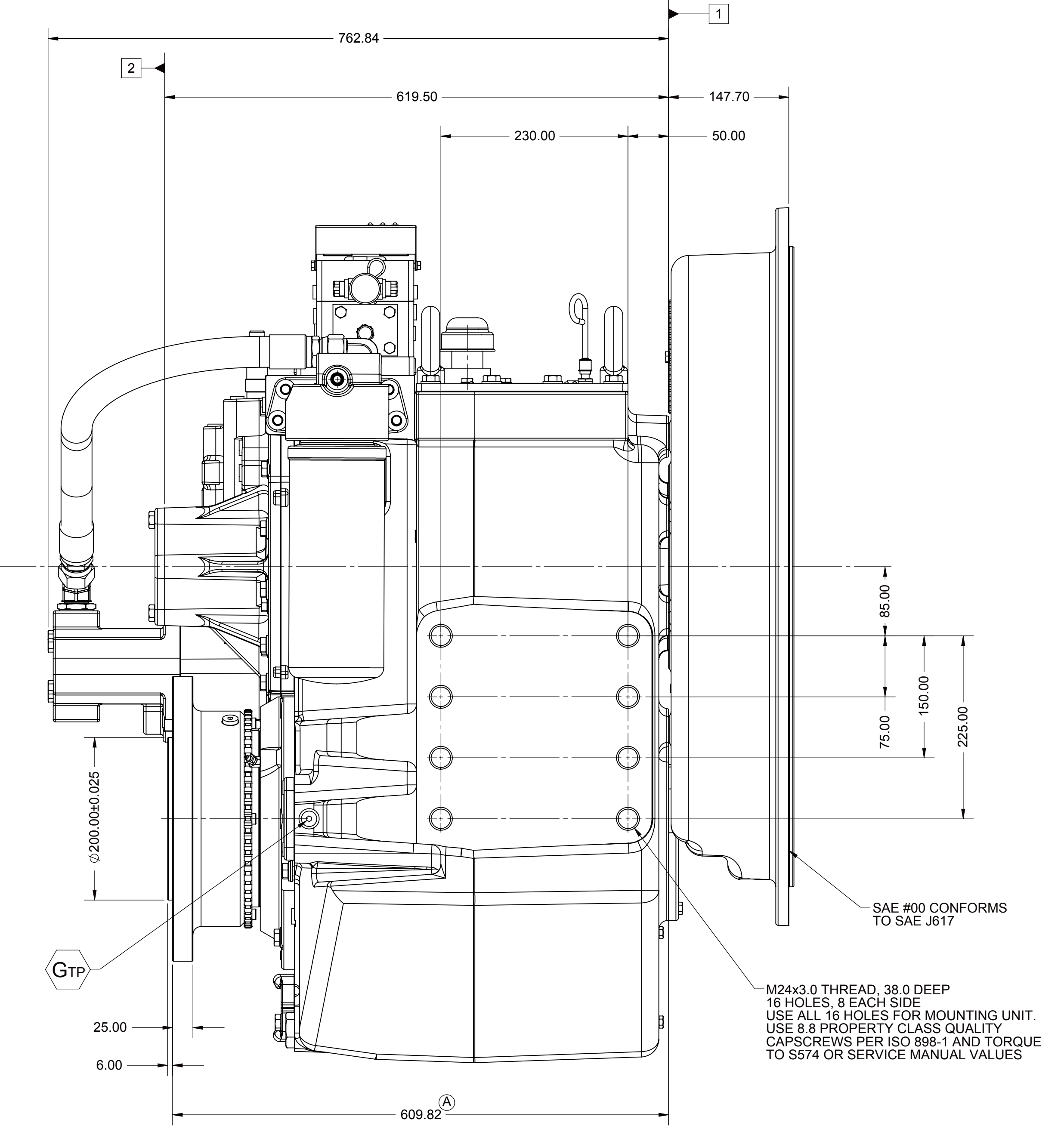
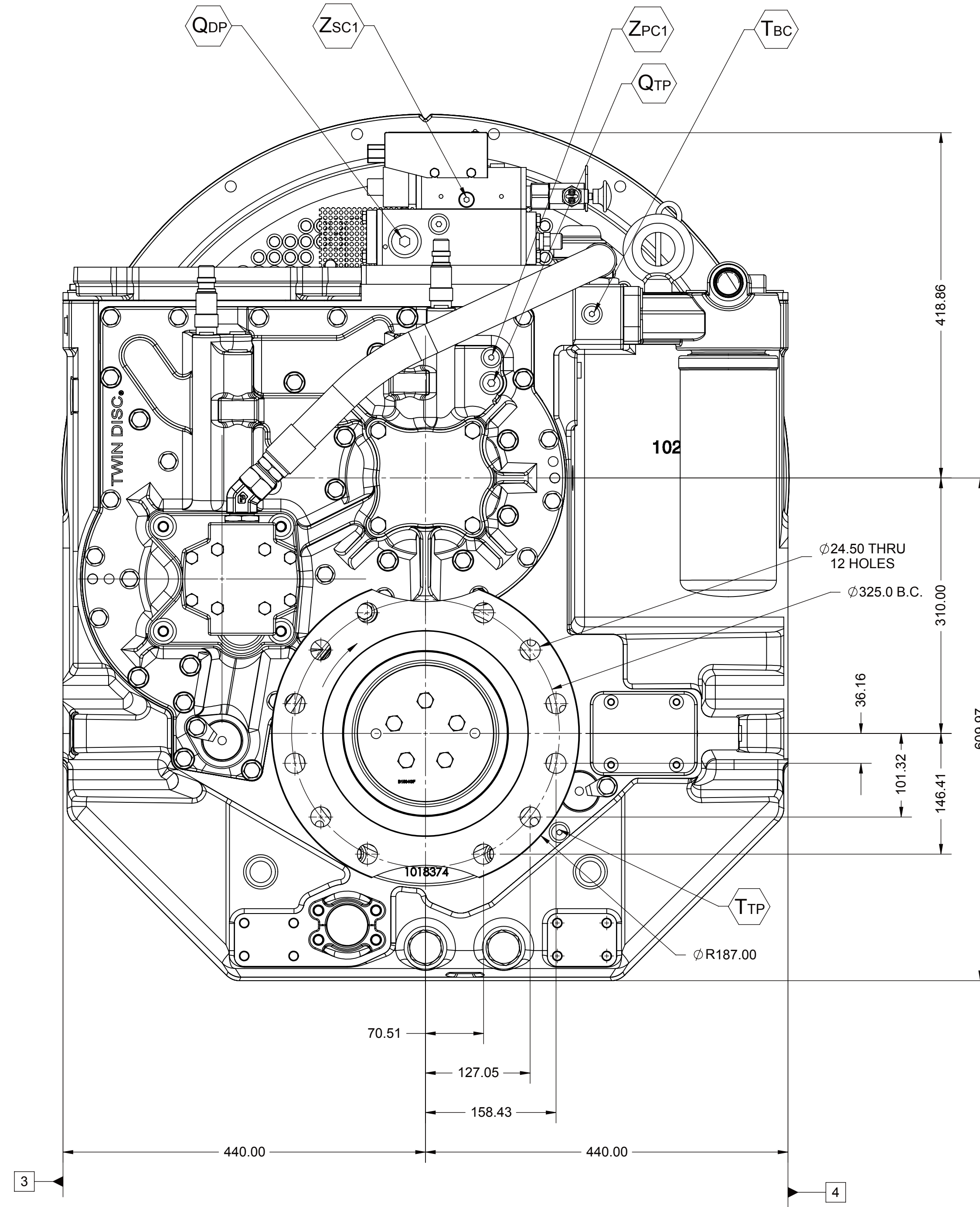
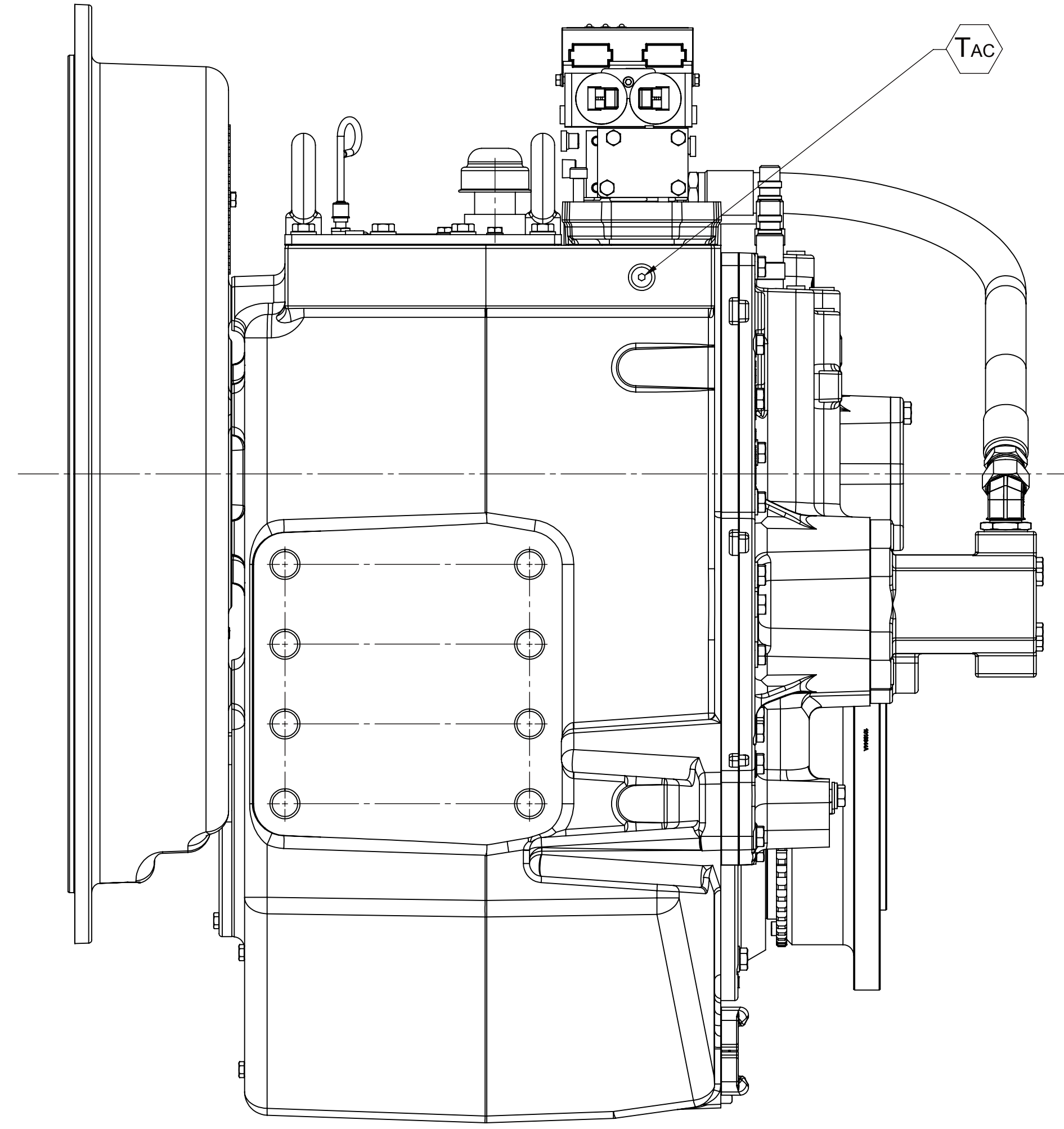
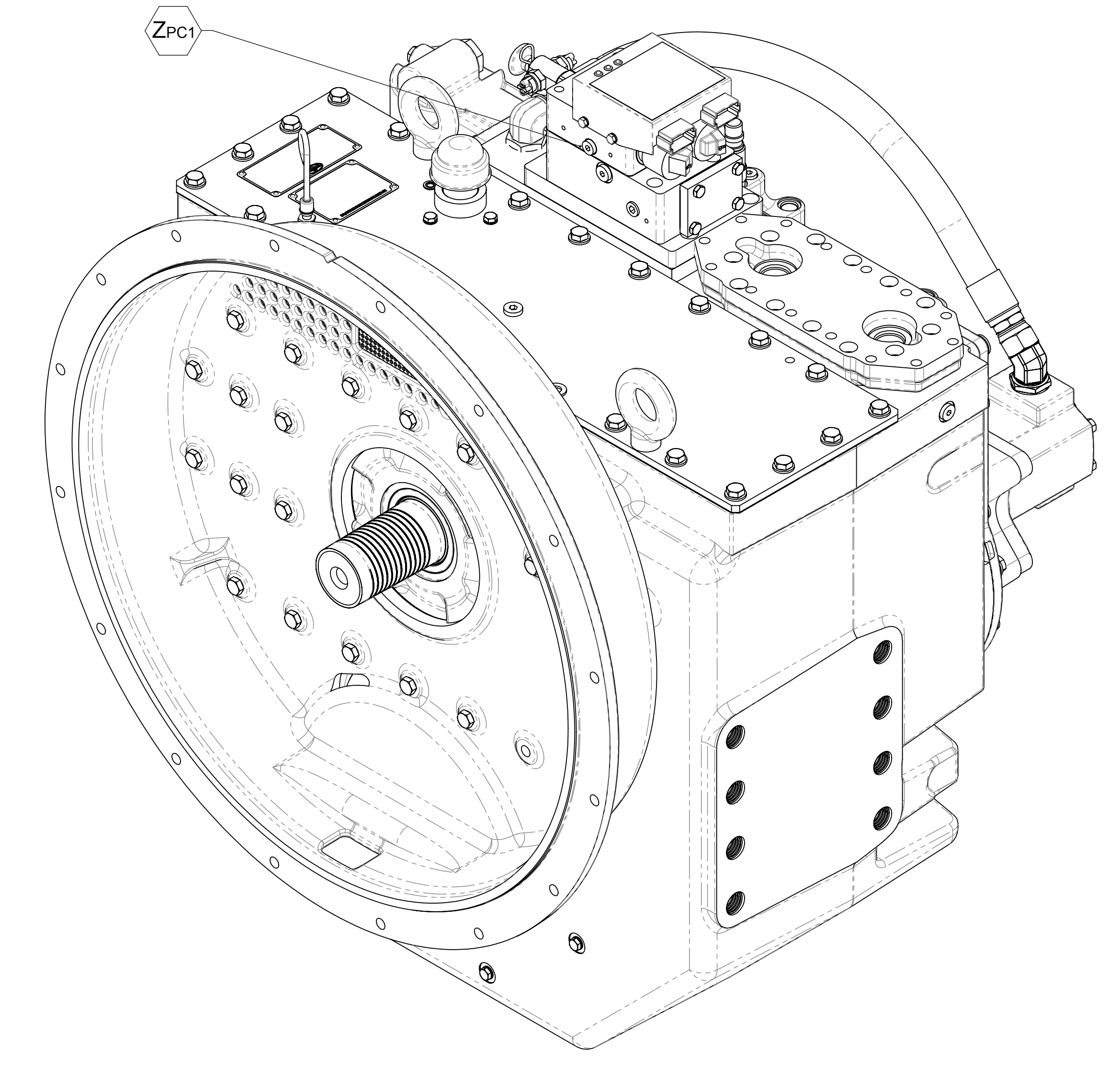
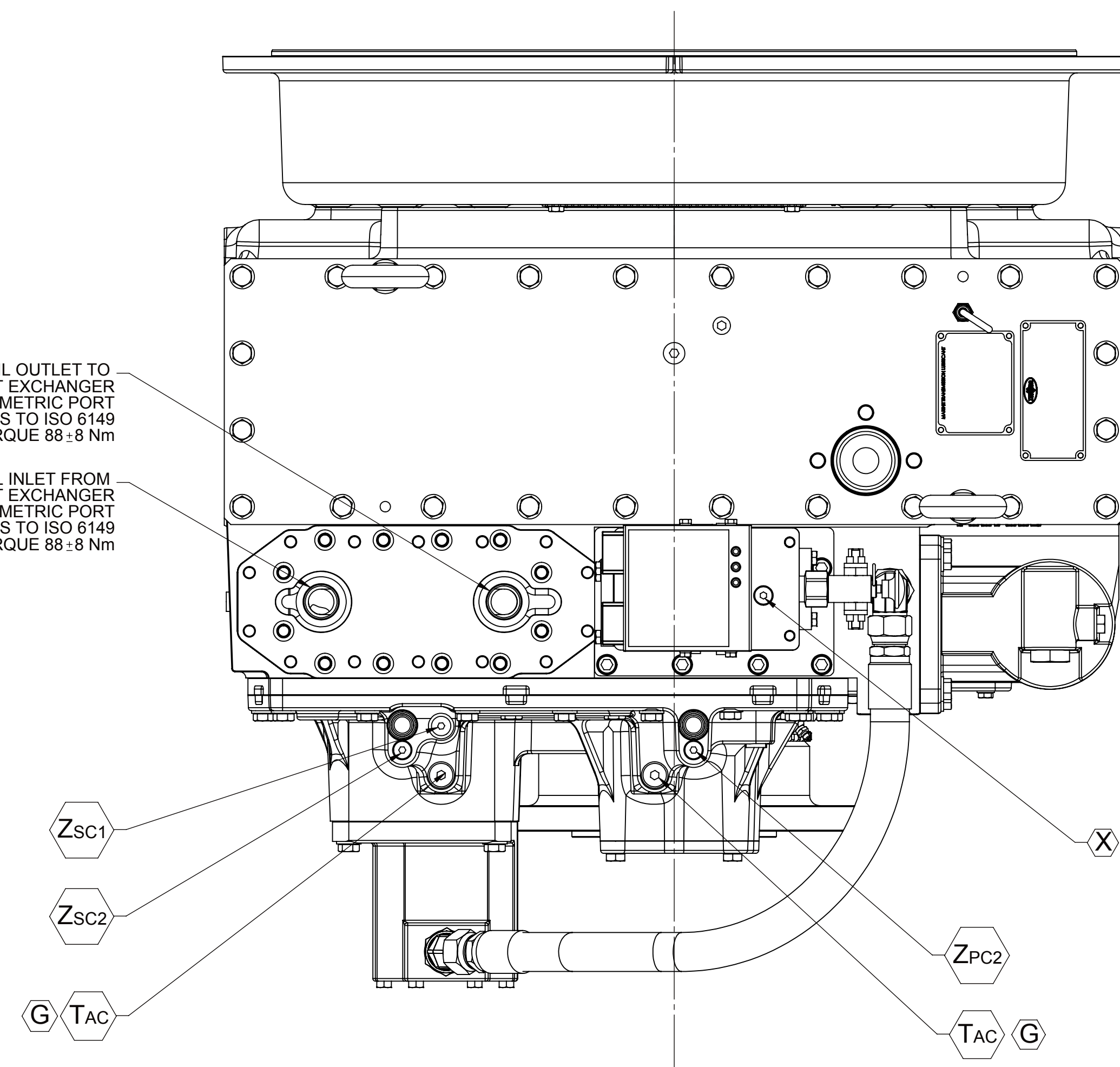


OIL OUTLET TO HEAT EXCHANGER
M33x2.0 METRIC PORT
CONFORMS TO ISO 6149
TIGHTENING TORQUE 88±8 Nm

OIL INLET FROM HEAT EXCHANGER
M33x2.0 METRIC PORT
CONFORMS TO ISO 6149
TIGHTENING TORQUE 88±8 Nm



REFER TO THE FOLLOWING ASSEMBLY NUMBERS
FOR GENERAL INSTALLATION DIMENSIONS AND NOTES.

MGX-6690SC - 1020674
MGX-6848SC - 1020675

EQUIPMENT SHOWN:
-SAE #00 LESS INPUT COUPLING
-GP VALVE WITH ECOSO MODULE
-DITCHPLATE FOR CUSTOMER SUPPLIED HEAT EXCHANGER

FIRST USE ASSEMBLY: FIRST USE MODEL: SIMILAR TO:		WEIGHT: VOL:	THIRD ANGLE PROJECTION	MATERIAL: HEAT TREAT:	DATE: 07/26/2010	SCALE: 1:4	DESIGNED BY: YU	DRAWN BY: ALC	CHECKED BY: ALC	APPROVED BY: ALC	DATE: 03/25/2013	REV: CHANGE NO.	DATE
METRIC		UNLESS OTHERWISE SPECIFIED DIMENSIONS ARE IN MILLIMETERS X.X X.XX X.XXX	ALL ANGLES TO UNLESS NOTED OTHERWISE	GEOMETRIC TOLERANCING REQUIREMENTS PER ASME Y14.5M-2009	DESCRIPTION: INSTALLATION MGX-6690SC/MGX-6848SC		TWIN(DISC) RACINE, WI 53403, USA		1025142B		REV: 1 OF 1		