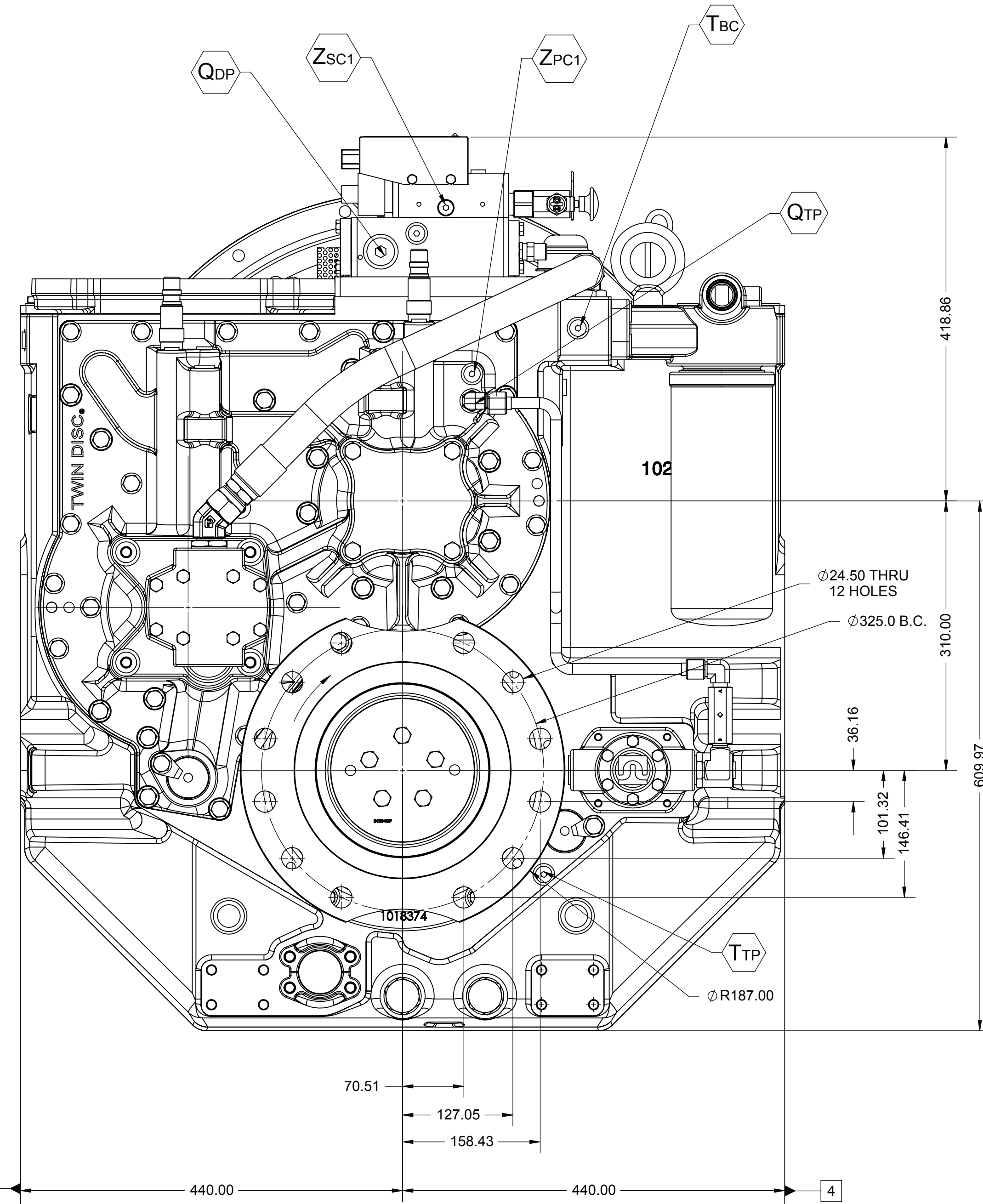
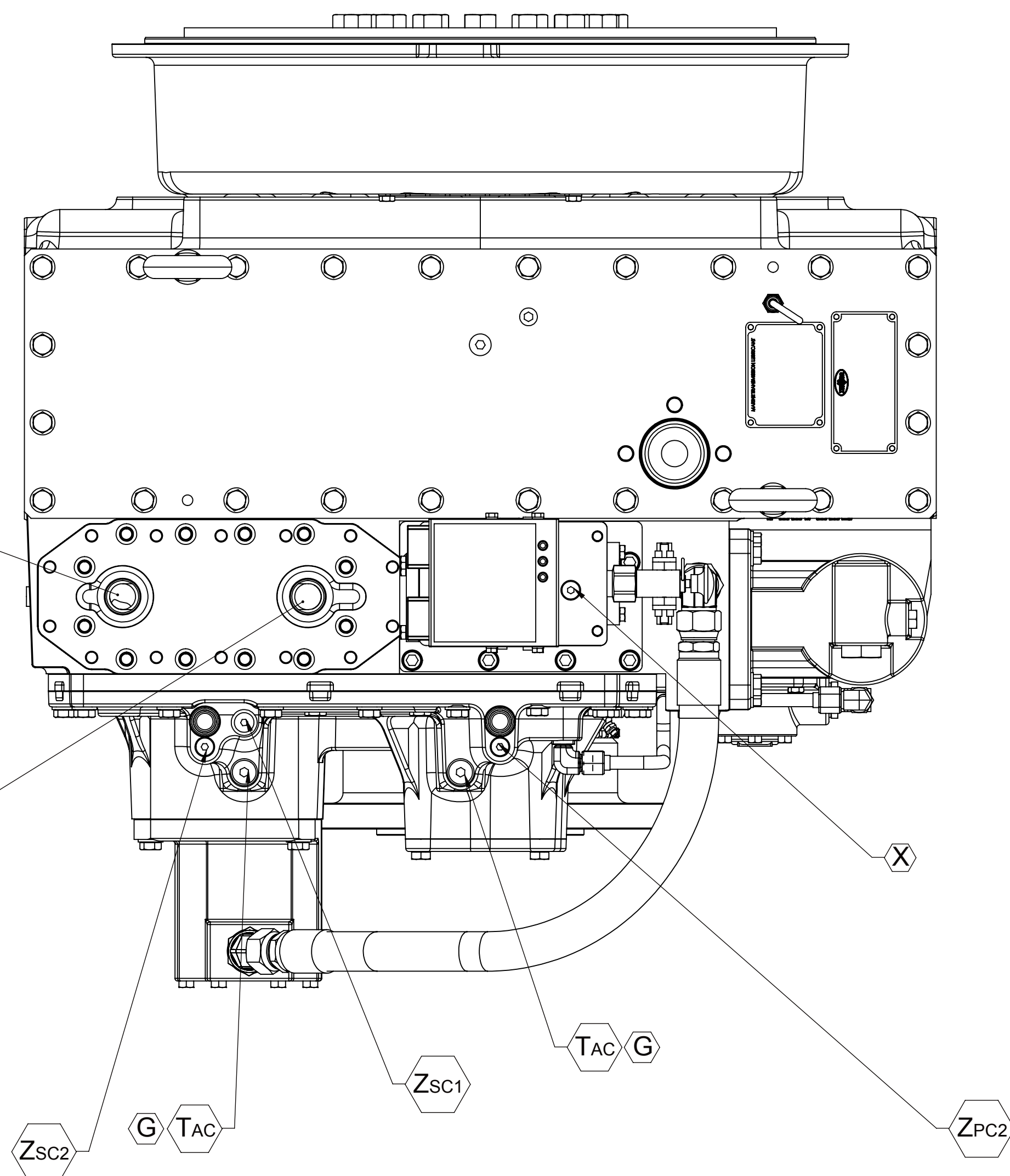


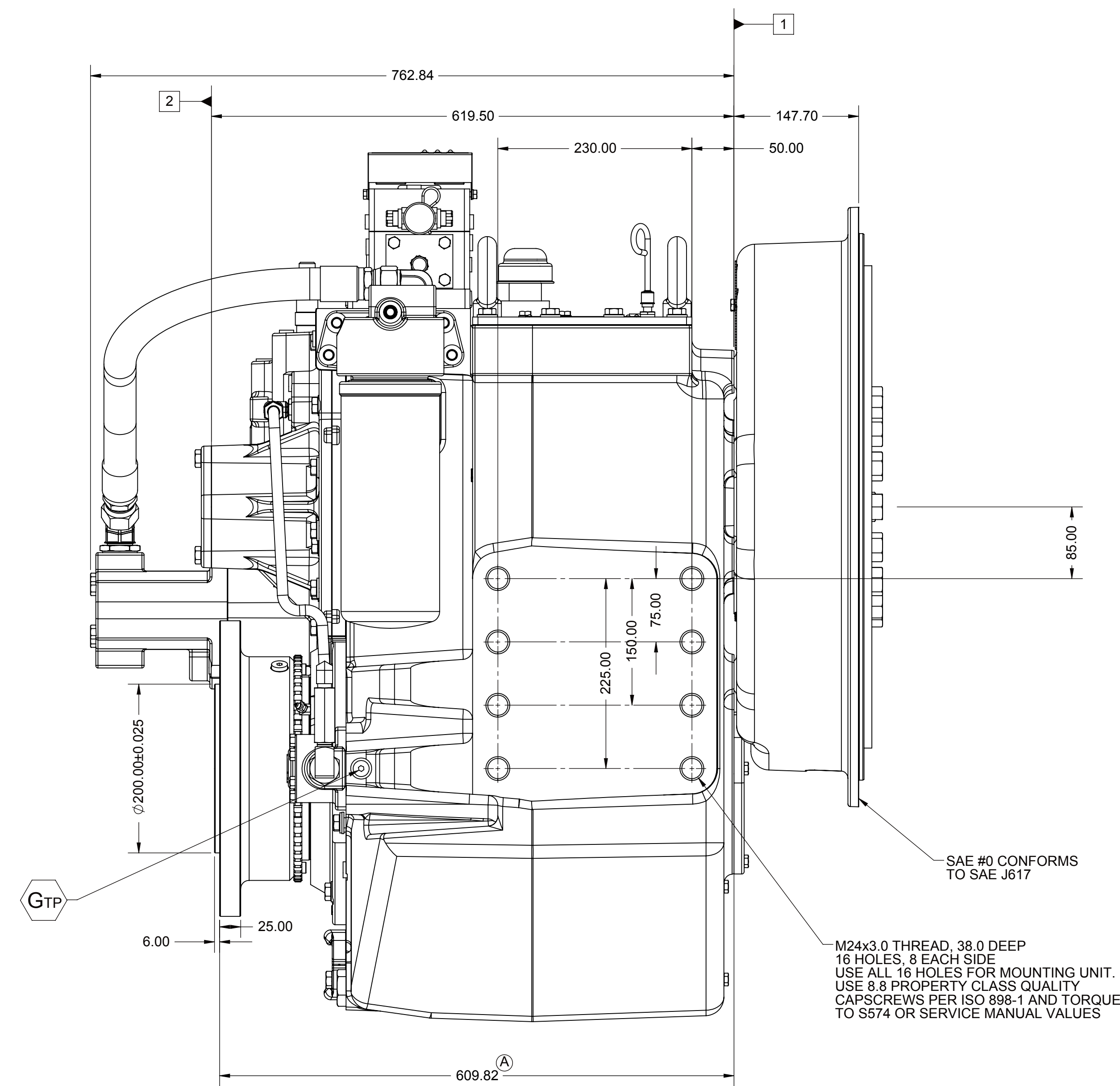
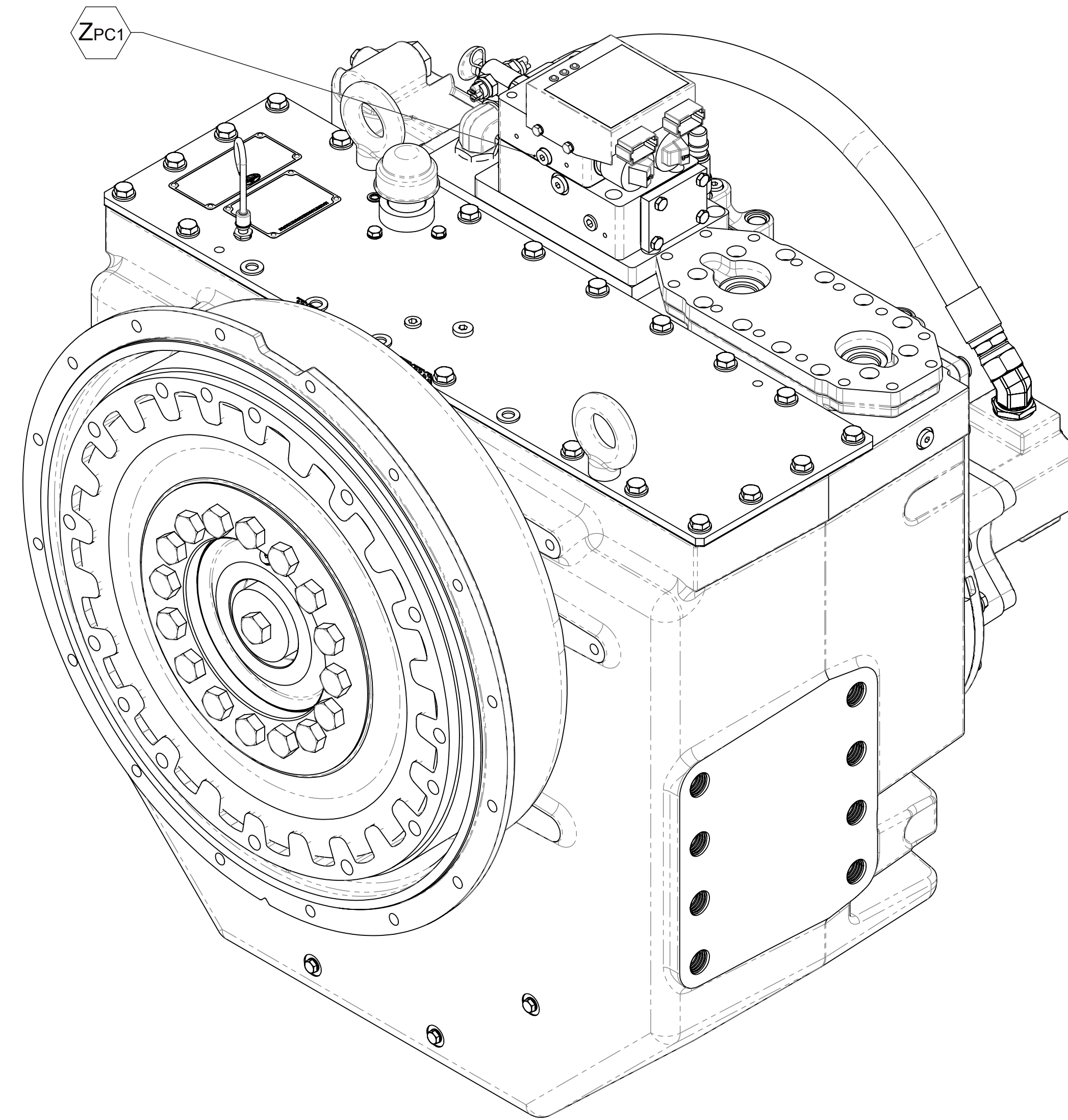
OIL INLET FROM HEAT EXCHANGER
M33x2.0 METRIC PORT
CONFORMS TO ISO 8149
TIGHTENING TORQUE 88.8 Nm

OIL OUTLET TO HEAT EXCHANGER
M33x2.0 METRIC PORT
CONFORMS TO ISO 8149
TIGHTENING TORQUE 88.8 Nm



REFER TO THE FOLLOWING ASSEMBLY NUMBERS FOR GENERAL INSTALLATION DIMENSIONS AND NOTES.

- MGX-6690SC - 1020674
- EQUIPMENT SHOWN:
- INPUT GROUP 1025088B
- GP VALVE WITH EC050 MODULE
- DITCHPLATE FOR CUSTOMER SUPPLIED HEAT EXCHANGER
- TRAILING PUMP



M24x3.0 THREAD, 38.0 DEEP
16 HOLES, 8 EACH SIDE
USE ALL 16 HOLES FOR MOUNTING UNIT.
USE 8.8 PROPERTY CLASS QUALITY
CAPSCREWS PER ISO 898-1 AND TORQUE
TO S574 OR SERVICE MANUAL VALUES

SAE #0 CONFORMS TO SAE J617

FIRST USE ASSEMBLY: MGX-6690SC		DESIGN:	THIRD ANGLE	MATERIAL:	DATE:
FIRST USE MODEL: 1020674		PRODUCTION:	PROJECTION:	HEAT TREAT:	09/11/2009
SIMILAR TO:		SCALE:	1:4	DESIGNED BY:	DJM
UNLESS OTHERWISE SPECIFIED		UNLESS OTHERWISE SPECIFIED	UNLESS OTHERWISE SPECIFIED	CHECKED BY:	JCS
METRIC		UNLESS OTHERWISE SPECIFIED	UNLESS OTHERWISE SPECIFIED	APPROVED BY:	ALC
TOLERANCES:		UNLESS OTHERWISE SPECIFIED	UNLESS OTHERWISE SPECIFIED	DATE:	09/11/2009
GEOMETRIC TOLERANCING		UNLESS OTHERWISE SPECIFIED	UNLESS OTHERWISE SPECIFIED	PROJECT:	1025142A
REVISIONS:		UNLESS OTHERWISE SPECIFIED	UNLESS OTHERWISE SPECIFIED	SHEET:	1 OF 1
DESCRIPTION:		UNLESS OTHERWISE SPECIFIED	UNLESS OTHERWISE SPECIFIED	DATE:	03/25/2013
INSTALLATION		UNLESS OTHERWISE SPECIFIED	UNLESS OTHERWISE SPECIFIED	REV:	A
MGX-6690SC		UNLESS OTHERWISE SPECIFIED	UNLESS OTHERWISE SPECIFIED	DATE:	03/25/2013